



# Community Data Program

Enabling communities across Canada to measure and track local well-being

## Community Snapshot

### New Westminster Economic Development Indicators (EDI) 2020



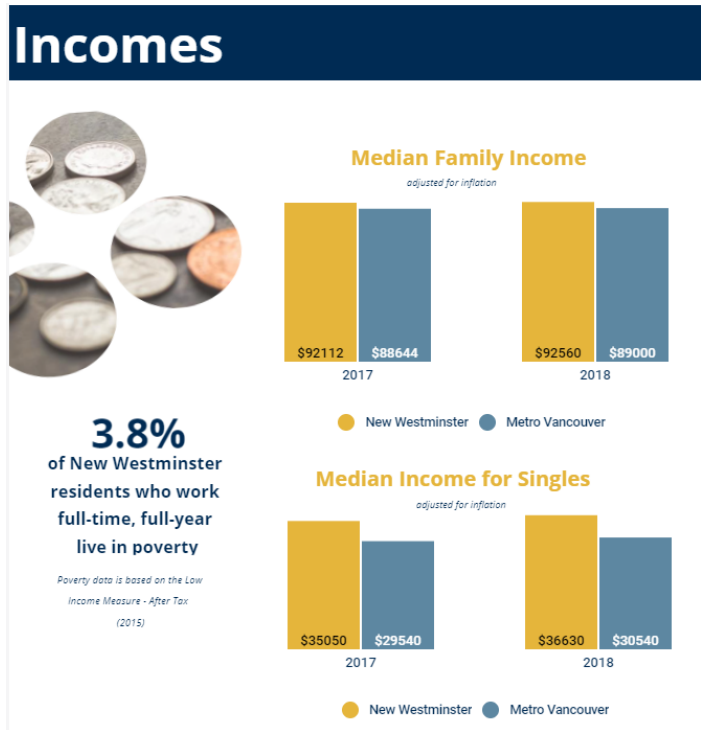
## Summary

The intention of the EDI infographic is to provide benchmarks of indicators that demonstrate the economic health of our community.

The Economic Development division at the City of New Westminster uses these factors to help us benchmark and monitor specific factors over time that we think are important to watch.

At the same time, we felt it was important to make the data accessible to a layperson to visualize and understand the impact changes have. It is targeted at business owners, or potential business owners, and complements a number of resources we offer to help them select or validate New Westminster as a location for their business.

[Click here to view the New Westminster Economic Development Indicators](#)



## Practitioner

Tristan Johnson is a Senior Planning Analyst with the City of New Westminster. He used the Community Data to develop the Economic Indicators Infographics.

City of New Westminster is a member organization of the Vancouver Data Consortium as part of the Community Data Program.

## Community data used

- Taxfiler (T1FF) - Income of Families/Individuals, Statistics Canada



The Community Data Program is an initiative of the Canadian Community Economic Development Network