

Introduction to the Community Data Program



This presentation is designed to give you a better understanding of:

1. What is the Community Data Program?
2. Census terminology
3. What datasets are available through the program?
4. Finding and using data
5. Tableau dashboards
6. General questions



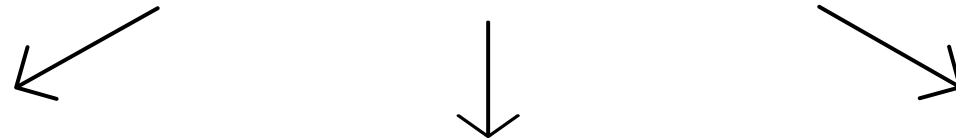
What is the Community Data Program (CDP)?

- Established in the 1990s by Canadian Council on Social Development. Now administered by Canadian Community Economic Development Network (CCEDNet)
- Created to track poverty in neighbourhoods
- Focuses on acquiring data for small area geography from Statistics Canada and other data sources
- Helps analyze and report on socioeconomic trends
- Shares cost of data



What services does the CDP provide?

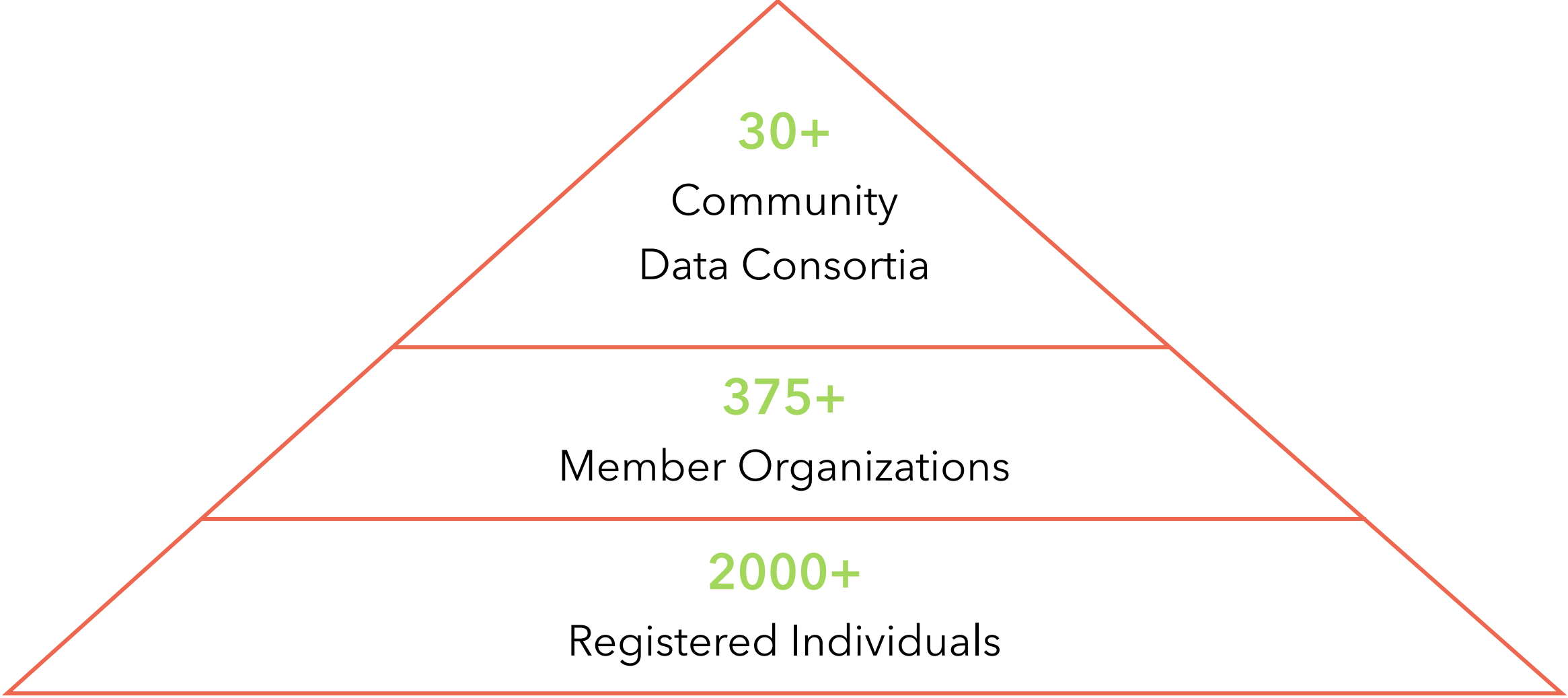
Priority Areas



Data	Capacity Building	Networking
Direct access to web-based customized community data	Data analysis tools and training	National networking sessions



How is the CDP structured?



Who is involved in the network?



Who is involved in the network?

Consortium Network

- National network, covering all of Canada except for PEI and Quebec and the Territories

Examples of Members

- Municipal and provincial governments
- Local United Way chapters
- Community health centres
- Social planning councils
- School boards
- Immigration and youth services
- Libraries
- Economic development agencies



How are membership fees structured?

The CDP's consortium model allows the program to be financially independent and continue to purchase data, offer support, and grow the program

Consortium Fees

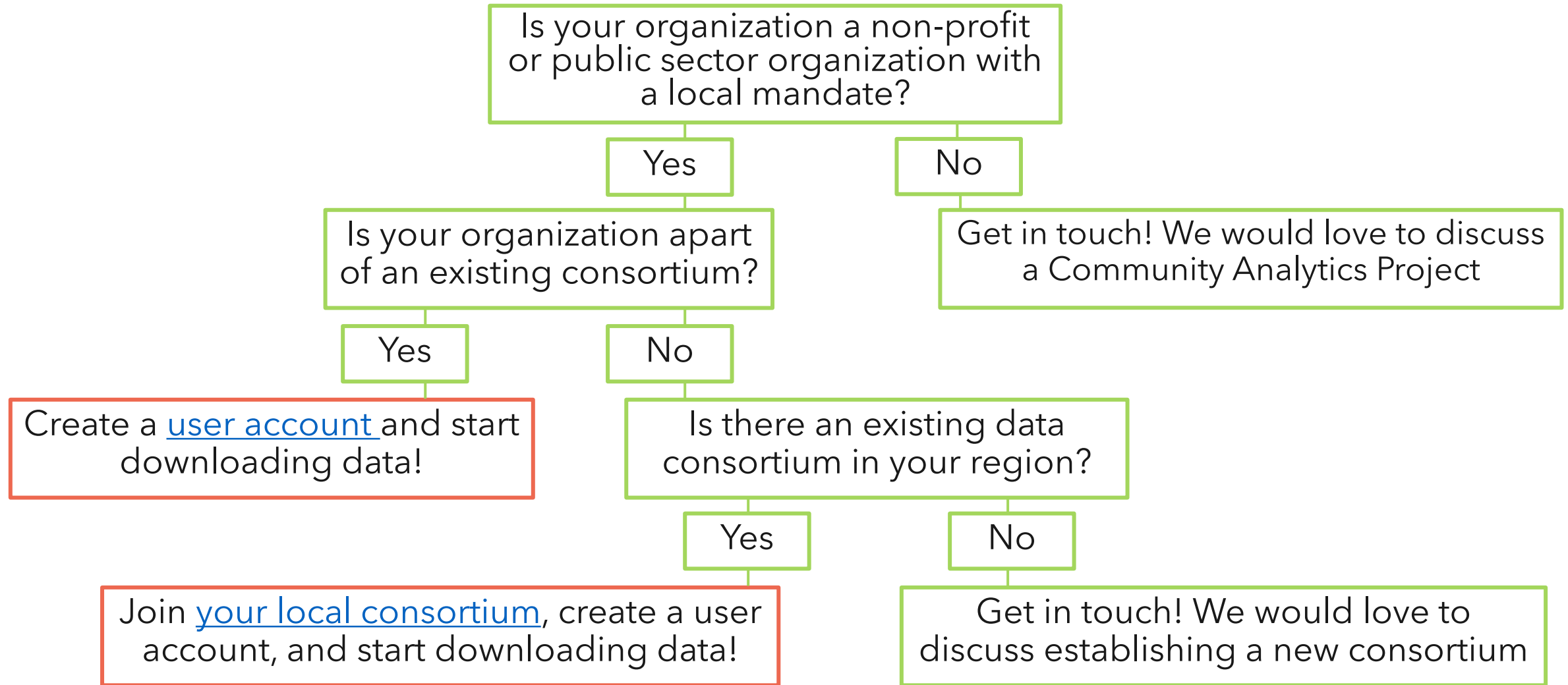
- Fees based on population
- Collected annually by CDP
- Consortium leads can develop own model for recovering costs

Membership Fees

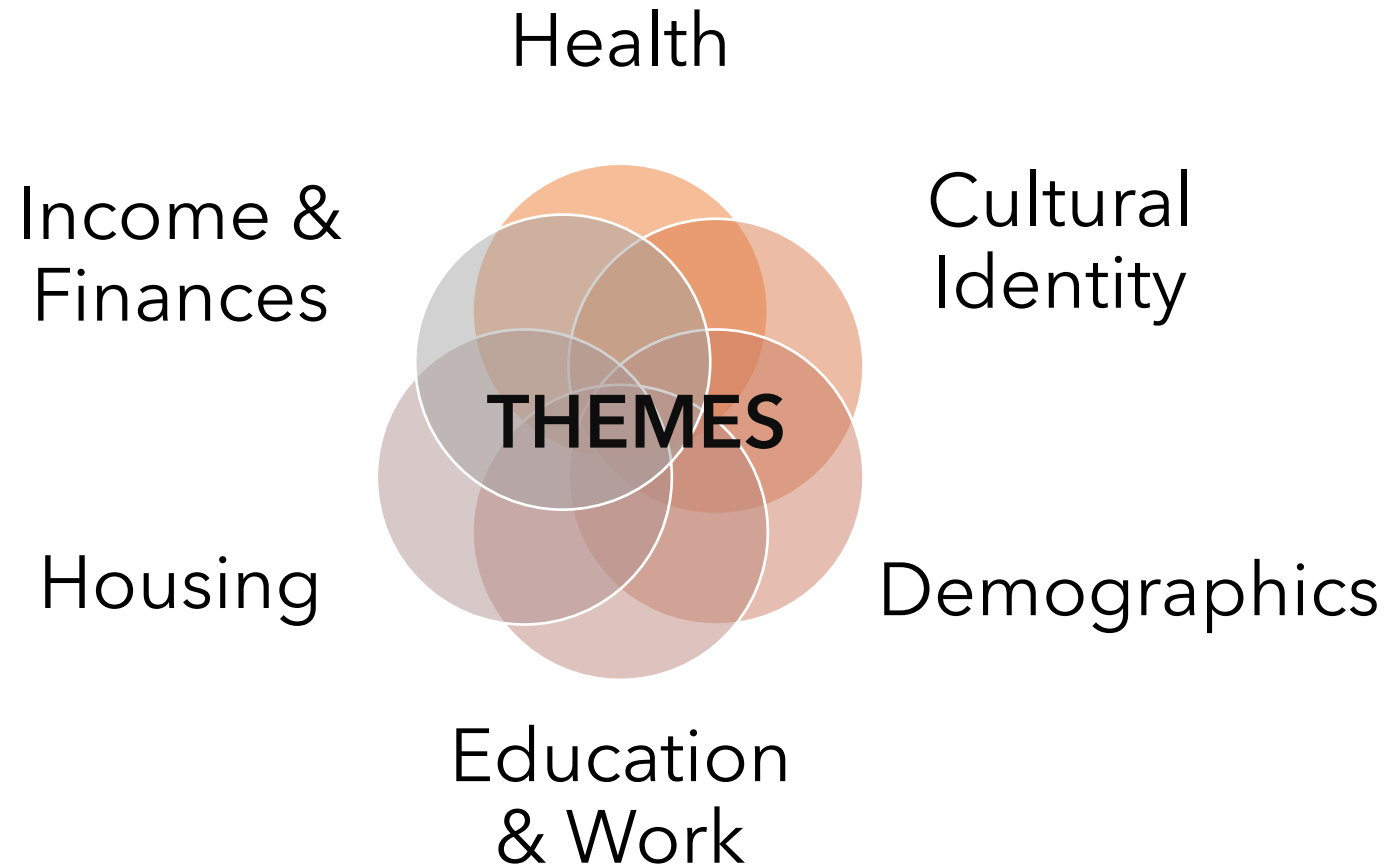
- Member organizations pay a \$150 annual fee to the CDP
- Typically, each legal entity, i.e. a municipality, is responsible for paying its own membership fee
- Membership fee enable an unlimited number of user accounts within organization



How can I access CDP data?



What data sets are available through the program?



What data sets are available through the program?

- Smallest possible geographic scale
 - Always sub-provincial
 - Municipal Level (Census Division, Census Subdivision)
 - Neighbourhood-level where possible (Dissemination Area, Census Tract)
- Custom Statistics Canada data
 - Custom cross-tabulations and target group profiles
 - Custom boundaries
- Links to open data
- Data available in IVT table format, excel, or Tableau



What CDP data can I access through Tableau?

Community Recover Dashboard:

- Demographic, employment, education, and income data

Housing Dashboard:

- Tenure, housing starts/completions, vacancy rates, population and household change

Census Dashboard Series:

- 2021 Census data (Population and Dwelling count currently available, Age, Gender, Sex at Birth, and Type of Dwelling to be released soon)



Check the website to view the full catalogue!



Tableau as a member service

To access this product, all you need to do is download **Tableau Reader** - a free software similar to Adobe Reader

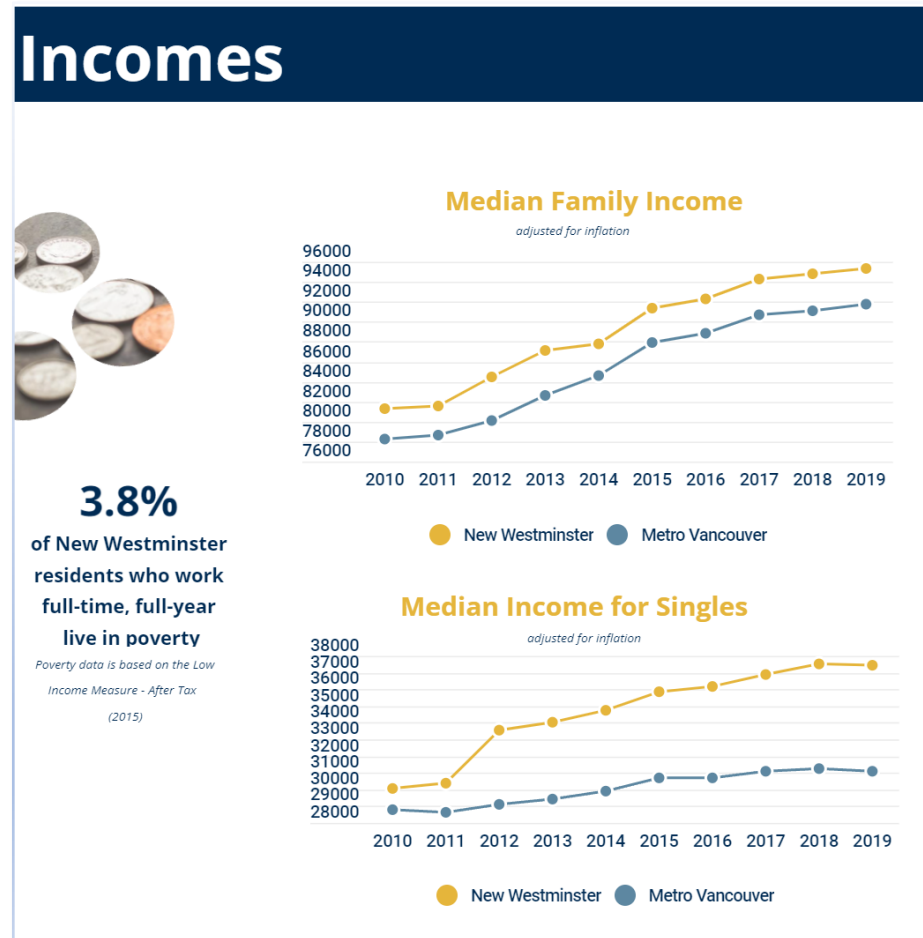




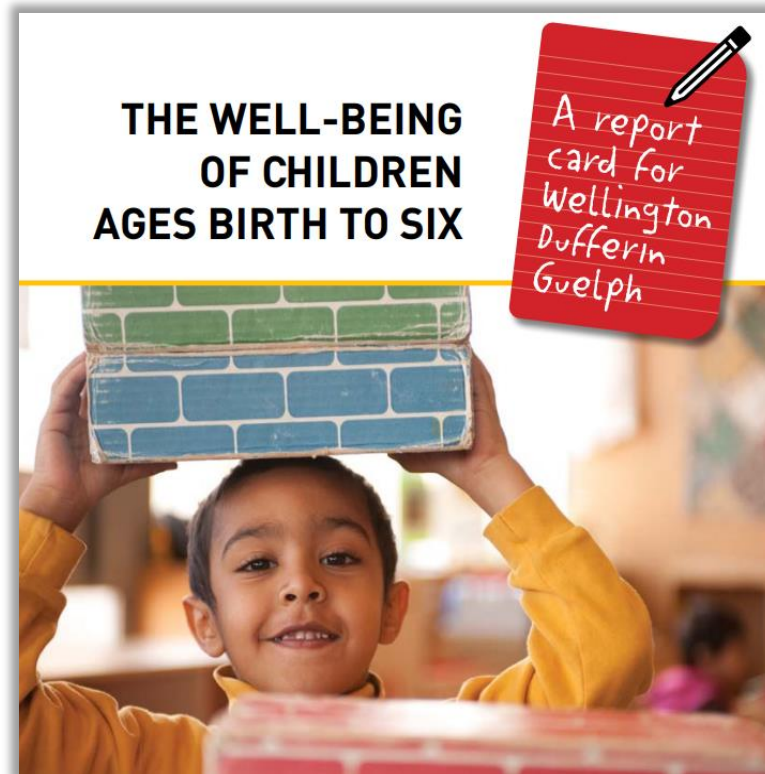
What have members done with CDP data?

Economic Development Indicators

New Westminster

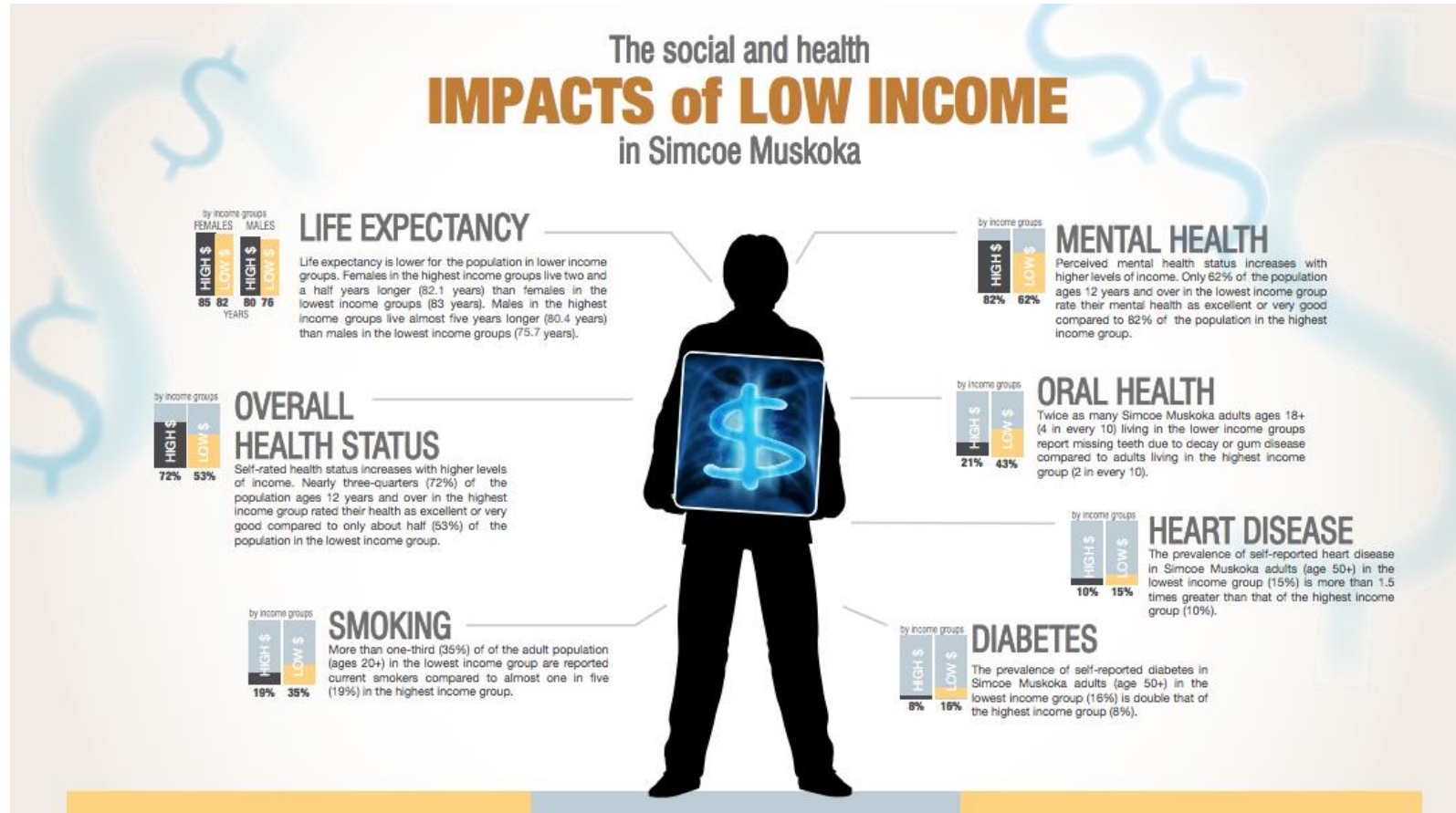


WDG: Report Cards on the Well-Being of Children



The screenshot shows the homepage of the "Report Cards on the Well-Being of Children" Data Portal. The header includes the logo, the title "Wellington - Dufferin - Guelph Report Cards on the Well-Being of Children", a search bar, and a "Feedback" link. The main navigation bar has four tabs: "About", "Data Portal", "Our Reports", and "Get Help". Below the navigation bar, there is a "Home / Data Portal" breadcrumb. On the left, a sidebar menu lists "Data Portal Home", "Education", "Health", "Living Environment", "Safety", and "Social Relationships". The main content area features a "Welcome to Our Data Portal" heading, a magnifying glass over a bar chart, and a "Contact" section. The "Contact" section includes the text "Looking for more information? Contact the Report Card Coalition today!" and an "Email Us" link. Below the "Contact" section, there are two sections: "Education" and "Health", each with a brief description of the data available in that domain.

Simcoe Muskoka: Health Stats



Contact us any time with questions.

www.communitydata.ca

information@communitydata.ca



Community Data Program

Enabling communities across Canada to measure and track local well-being