



Catalogue no. 92-196-XIE

# Geography Catalogue

Census year 2006

First edition



## How to obtain more information

For information on the wide range of data available from Statistics Canada, you can contact us by calling one of our toll-free numbers. You can also contact us by e-mail or by visiting our website at [www.statcan.ca](http://www.statcan.ca).

|   |  |
|---|--|
| National inquiries line                                     | 1-800-263-1136   |
| National telecommunications device for the hearing impaired | 1-800-363-7629   |
| Depository Services Program inquiries                       | 1-800-700-1033   |
| Fax line for Depository Services Program                    | 1-800-889-9734   |
| E-mail inquiries  | <a href="mailto:infostats@statcan.ca">infostats@statcan.ca</a> |
| Website   | <a href="http://www.statcan.ca">www.statcan.ca</a>             |

## Information to access the product

This product, catalogue no. 92-196-XIE, is available for free in electronic format. To obtain a single issue, visit our website at [www.statcan.ca](http://www.statcan.ca) and select Publications.

## Standards of service to the public

Statistics Canada is committed to serving its clients in a prompt, reliable, courteous, and fair manner. To this end, the Agency has developed standards of service that its employees observe in serving its clients. To obtain a copy of these service standards, please contact Statistics Canada toll free at 1-800-263-1136. The service standards are also published on [www.statcan.ca](http://www.statcan.ca) under About us > Providing services to Canadians.



Statistics Canada

# Geography Catalogue

Census year 2006

First edition

Published by authority of the Minister responsible for Statistics Canada

© Minister of Industry, 2007

All rights reserved. The content of this electronic publication may be reproduced, in whole or in part, and by any means, without further permission from Statistics Canada, subject to the following conditions: that it be done solely for the purposes of private study, research, criticism, review or newspaper summary, and/or for non-commercial purposes; and that Statistics Canada be fully acknowledged as follows: Source (or "Adapted from", if appropriate): Statistics Canada, year of publication, name of product, catalogue number, volume and issue numbers, reference period and page(s). Otherwise, no part of this publication may be reproduced, stored in a retrieval system or transmitted in any form, by any means—electronic, mechanical or photocopy—or for any purposes without prior written permission of Licensing Services, Client Services Division, Statistics Canada, Ottawa, Ontario, Canada K1A 0T6.

March 2007

Catalogue no. 92-196-XIE  
ISBN 978-0-662-44995-9

Frequency: occasional

Ottawa

La version française de cette publication est disponible sur demande (n° 92-196-XIF au catalogue).

---

## Note of appreciation

Canada owes the success of its statistical system to a long-standing partnership between Statistics Canada, the citizens of Canada, its businesses, governments and other institutions. Accurate and timely statistical information could not be produced without their continued cooperation and goodwill.

# Table of contents

|   | Page |
|---|------|
| Table of contents.....  | 4    |
| General information.....  | 7    |
| 1. Geographic reference products .....  | 9    |
| Illustrated glossary .....  | 9    |
| GeoSearch2006 .....   | 10   |
| Geography Catalogue .....   | 11   |
| Geography definitions (2006 Census Dictionary) .....  | 11   |
| Reference guides .....  | 12   |
| Reference maps – 2006 Census.....   | 13   |
| Reference maps – complete set, 2006 Census .....  | 13   |
| National reference maps .....   | 13   |
| Federal Electoral Districts (2003 Representation Order) reference map.....  | 14   |
| Census Division and Census Subdivision reference maps.....  | 14   |
| Census Tract Reference Maps, by Census Metropolitan Areas or Census Agglomerations .....  | 17   |
| Dissemination Area Reference Maps, by Census Tracts, for Census Metropolitan Areas and Census Agglomerations.....                     | 21   |
| Dissemination Area Reference Maps, by Non-Tracted Census Agglomerations .....   | 25   |
| Dissemination Area Reference Maps, by Census Subdivisions, for areas outside Census Metropolitan Areas and Census Agglomerations..... | 28   |
| Thematic maps – 2006 Census .....   | 30   |
| Geography Working Paper Series .....  | 31   |
| Interim List of Changes to Municipal Boundaries, Status and Names.....  | 31   |
| Standard Geographical Classification .....  | 32   |
| Standard Geographical Classification. Volume I. The Classification .....  | 32   |
| Standard Geographical Classification. Volume II. Reference Maps .....   | 32   |
| 2. Geographic data products.....  | 33   |
| Population and dwelling counts, 2006 Census .....   | 33   |
| GeoSuite .....  | 34   |
| Geographic Attribute File .....   | 35   |
| Correspondence Files .....  | 35   |
| GeoSearch2006.....  | 36   |
| 3. Spatial information products .....   | 37   |
| Boundary Files, 2006 Census .....   | 38   |
| Province and Territory Boundary Files .....   | 40   |
| Census Division Boundary Files.....   | 40   |
| Census Consolidated Subdivision Boundary Files.....   | 40   |
| Census Subdivision Boundary Files.....  | 41   |
| Economic Region Boundary Files .....  | 41   |
| Census Metropolitan Area and Census Agglomeration Boundary Files.....   | 41   |
| Federal Electoral District Boundary Files (2003 Representation Order).....  | 42   |
| Census Tract Boundary Files.....  | 42   |
| Designated Place Boundary Files .....   | 43   |
| Urban Area Boundary Files .....   | 43   |
| Dissemination Area Boundary Files .....   | 44   |
| Dissemination Block Boundary Files .....  | 45   |
| Forward Sortation Areas Boundary File .....   | 46   |
| Population Ecumene Census Division Cartographic Boundary File.....  | 46   |
| Road Network File.....  | 47   |
| Road Network and Geographic Attribute File .....  | 48   |

|   |    |
|---|----|
| 4. Attribute information products .....   | 51 |
| Postal Code Conversion File.....  | 51 |
| Postal Code Conversion File – Update.....   | 52 |
| Postal Codes by Federal Ridings (2003 Representation Order) File.....                   | 55 |
| Postal Codes by Federal Ridings (2003 Representation Order) File – Update.....          | 55 |
| 5. Geographic services .....  | 57 |
| Custom Area Creation Service.....   | 57 |
| Geography Custom Service.....   | 57 |
| Geography Custom Mapping.....   | 57 |
| 6. Other Statistics Canada related geographic products and services.....                | 58 |
| Agriculture products and services.....  | 58 |
| Agricultural Ecumene of Canada, 2006 .....  | 58 |
| Cartographic Boundary File for census agricultural regions (CARs) .....                 | 58 |
| Spatial analysis and geomatics applications (SAGA) program.....                         | 58 |
| Environment services.....   | 59 |
| The Environmental Information System.....   | 59 |
| Appendix A: Glossary.....   | 60 |
| Appendix B: Hierarchy of standard geographic units for dissemination, 2006 Census.....  | 67 |
| Appendix C: Geographic units by province and territory, 2006 Census.....                | 68 |
| Example of end-use licence agreement for Statistics Canada's for fee products .....     | 69 |
| Example of unrestricted use licence agreement for free Statistics Canada products ..... | 71 |
| Geography products feedback.....  | 76 |

ELECTRONIC PUBLICATIONS AVAILABLE AT  
**[www.statcan.ca](http://www.statcan.ca)**



## General information

Statistics Canada maintains a spatially referenced geographic database in support of the Censuses of Population and Agriculture, the Standard Geographical Classification and other Statistics Canada programs. Statistics Canada also develops geographical concepts, delineates geographic areas, publishes maps and other reference materials, produces files on CD-ROM (DVD), posts online products through the Statistics Canada website ([www.statcan.ca](http://www.statcan.ca)) and offers a variety of services.

### Overview

The 2006 Census geography product line ([www12.statcan.ca/english/census06/geo/index.cfm](http://www12.statcan.ca/english/census06/geo/index.cfm)) includes new and modified geography concepts, enhancements and improvements to existing products, the introduction of new products, and a greater presence on the Internet site. For 2006, Digital Boundary Files are once again available. Reference maps and other geographic products are available in a variety of media. Tools are provided for users to find and view their geographic area of interest on the Internet.

This edition of the Geography Catalogue includes all of the information found in the Statistics Canada online catalogue, but has the following additional information. It provides highlights of what's new about geographic products for the 2006 Census, as well as illustrations of several products. It includes a glossary of geography terms, the geography hierarchy diagram and tables showing the number of geographic units by province and territory for the 2006 Census. Also included are examples of the Statistics Canada "End Use Licence Agreement" and "Unrestricted End Use Licence Agreement".

The catalogue is organised according to the following categories of products and services:

#### 1. Geographic reference products

A full range of geographic reference products and tools are available free on the Internet.

#### 2. Geographic data products

Population and dwelling counts from the 2006 Census are available free on the Internet for all levels of geography using GeoSearch2006. Individual tables or groups of tables showing population and dwelling counts may be purchased. For more information contact the National inquiries line. GeoSuite, GeoSearch2006 and the Geographic Attribute File are geographic reference tools that also provide 2006 Census Population and Dwelling counts on CD-ROM or the Internet.

#### 3. Spatial information products

Spatial information products provide the shape and location of geographic features for use with computer mapping and geographic information system applications.

The road network, boundaries and other features of standard geographic areas are available.

The Road Network File and selected boundary files are available free of charge, while other boundary files are available for a fee.

#### 4. Attribute information products

Attribute information products include the Postal Code Conversion File and the Postal Codes by Federal Ridings File. These products are currently available with 2001 Census attributes. They will be released with attributes for the 2006 Census in the fall of 2007.

## **5. Geographic services**

Custom services, including the preparation of custom boundaries for custom data retrievals (geocoding), custom mapping and other custom packaging of standard products are available. Contact us through the National inquiries line at 1-800-263-1136 or through our website at [www.statcan.ca](http://www.statcan.ca).

## **6. Other STC related geographic products and services**

Products and services available from the Agriculture Division and Environment Accounts and Statistics Division are briefly described.

## **Prices and shipping charges**

Prices quoted in this catalogue exclude sales tax. There are no shipping charges for delivery in Canada. For shipments to the United States, shipping charges are CDN \$6 per issue or item ordered. For shipments to other countries, shipping charges are CDN \$10 per issue or item ordered. Contact us by calling the National inquiries line at 1-800-263-1136. You can also contact us by e-mailing [infostats@statcan.ca](mailto:infostats@statcan.ca) or through our website at [www.statcan.ca](http://www.statcan.ca).



# 1. Geographic reference products

Geographic reference products help users gain a better understanding of geographic concepts and locate the geographic areas appropriate to their census and other data needs.

## What's new?

- Redesigned 2006 Census website ([www.statcan.ca](http://www.statcan.ca)) provides improved access to all the geography products and services.
- The complete set of all reference maps for 2006 is available for purchase for \$275 (as PDF files on DVD).

Reference products for the 2006 Census were released in four phases starting on October 18, 2006, January 16, 2007, February 14, 2007 and March 13, 2007. They are described in more detail below.

## Illustrated glossary

The Illustrated Glossary is a tool that can help users take full advantage of census data, by providing an understanding of the terms related to geographic concepts, infrastructure, products and services. Geography is important to the national statistical system. Well-defined geographic areas provide the framework for the collection, presentation and analysis of data. Visitors to the Geography site can access the illustrated glossary which presents geographic concepts, products and services, as well as links to online tutorials and detailed definitions. To view the glossary, go to the Census Geography area on the Statistics Canada website at [www.statcan.ca](http://www.statcan.ca).

| Catalogue no. | Medium   | Language | Price | Release date  |
|---------------|----------|----------|-------|---------------|
| 92-195-XWE    | Internet | English  | Free  | 13 March 2007 |
| 92-195-XWF    | Internet | French   | Free  | 13 March 2007 |

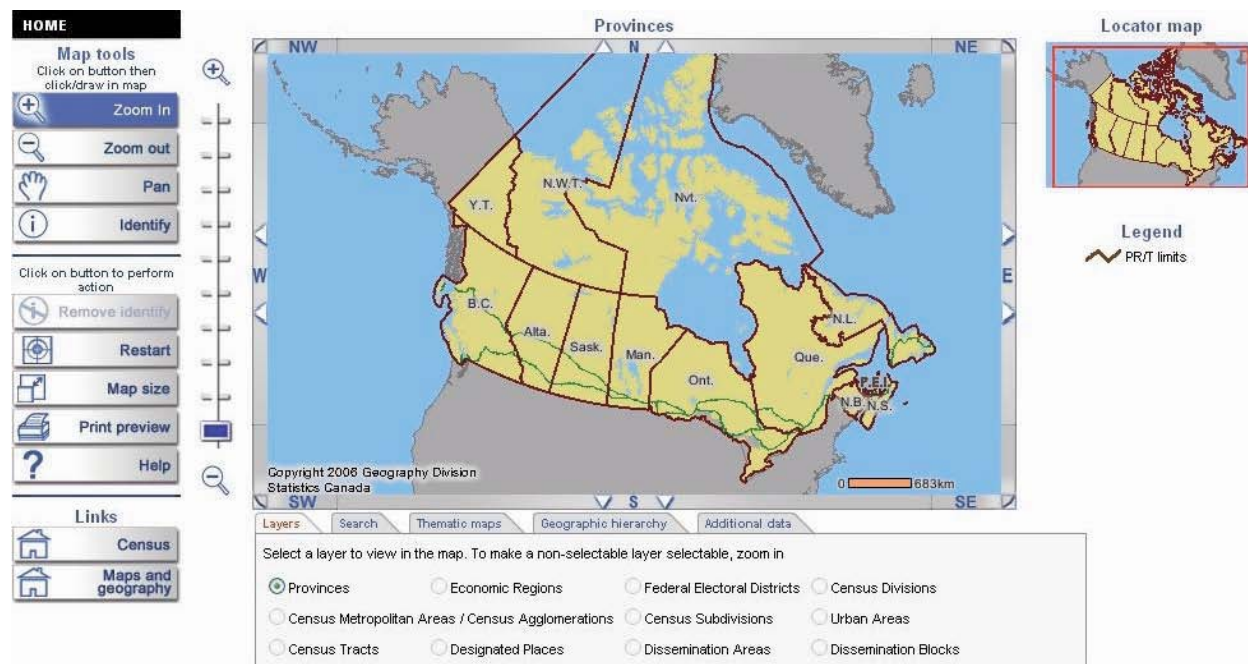
## GeoSearch2006

Redesigned for 2006, this interactive mapping application makes it easy to find many places in Canada, see them on a map, and get basic geographic and demographic data for those places. To find a specific place of interest, users can click and zoom in on a map of Canada or they can search by place name, street name, street intersection or postal code. GeoSearch2006 will display the appropriate map showing boundaries and other features. GeoSearch2006 automatically displays population and dwelling counts for the selected places, and shows what kind of geographic area it is and its relationship to other geographic areas.

New functionality for 2006 includes links to 2006 Census reference maps and community profile tables, and a thematic mapping option for selected census topics (for selected levels of geography).

| Catalogue no. | Medium   | Language | Price | Release date  |
|---------------|----------|----------|-------|---------------|
| 92-197-XWE    | Internet | English  | Free  | 13 March 2007 |
| 92-197-XWF    | Internet | French   | Free  | 13 March 2007 |

Figure 1.1 View of GeoSearch2006 on the Statistics Canada website



## Geography Catalogue

The Geography Catalogue includes all information found in the Statistics Canada online catalogue, but has the following additional information. It provides highlights of what's new about geographic products for the census, as well as illustrations of several products. It includes a glossary of geography terms, the geography hierarchy diagram, and a table showing the number of geographic units by province and territory for the census. Also included are examples of the Statistics Canada "End Use Licence Agreement" and "Unrestricted End Use Licence Agreement".

| Catalogue no. | Medium   | Language | Price | Release date  |
|---------------|----------|----------|-------|---------------|
| 92-196-XWE    | Internet | English  | Free  | 13 March 2007 |
| 92-196-XWF    | Internet | French   | Free  | 13 March 2007 |
| 92-196-XIE    | PDF      | English  | Free  | 13 March 2007 |
| 92-196-XIF    | PDF      | French   | Free  | 13 March 2007 |

## Geography definitions (2006 Census Dictionary)

The Geography section of the 2006 Census Dictionary provides an overview of what's new for 2006 and the definitions for geographic concepts, products and other terms. The definitions include a detailed description of each term, delineation rules, special notes, data quality information or applications relevant to the term. Some historical information is also provided. The dictionary also includes a comprehensive subject index. The geography portion of the online dictionary is available February 14, 2007. The Internet version of the complete 2006 Census Dictionary is available May 8, 2007. A print publication of the complete 2006 Census Dictionary is scheduled for release on January 17, 2008.

| Catalogue no. | Medium   | Language | Price | Release date     |
|---------------|----------|----------|-------|------------------|
| 92-566-XWE    | Internet | English  | Free  | 14 February 2007 |
| 92-566-XWF    | Internet | French   | Free  | 14 February 2007 |
| 92-566-XPE    | Print    | English  | \$25  | 17 January 2008  |
| 92-566-XPF    | Print    | French   | \$25  | 17 January 2008  |

## Reference guides

Most geography products come with free reference guides that describe the content, applications, data quality and record layouts. The following reference guides are available as HTML or PDF documents.

| Catalogue no. | Title  | Medium   | Price | Release date      |
|---------------|--|----------|-------|-------------------|
| 92-145-GWE    | Dissemination Area Reference Maps, Reference Guide   | Internet | Free  | 16 January 2007   |
| 92-145-GIE    | Dissemination Area Reference Maps, Reference Guide   | PDF      | Free  | 16 January 2007   |
| 92-146-GWE    | Census Tract Reference Maps by Census Metropolitan Area or Census Agglomeration, Reference Guide | Internet | Free  | 16 January 2007   |
| 92-146-GIE    | Census Tract Reference Maps by Census Metropolitan Area or Census Agglomeration, Reference Guide | PDF      | Free  | 16 January 2007   |
| 92-149-GWE    | National, Census Divisions and Census Subdivisions Reference Maps, Reference Guide               | Internet | Free  | 18 October 2006   |
| 92-149-GIE    | National, Census Divisions and Census Subdivisions Reference Maps, Reference Guide               | PDF      | Free  | 18 October 2006   |
| 92-150-GIE    | GeoSuite, Reference Guide  | PDF      | Free  | 13 March 2007     |
| 92-151-GIE    | Geographic Attribute File, Reference Guide   | PDF      | Free  | 14 February 2007  |
| 92-155-GWE    | Road Network and Geographic Attribute File, Reference Guide                                      | Internet | Free  | 13 March 2007     |
| 92-155-GIE    | Road Network and Geographic Attribute File, Reference Guide                                      | PDF      | Free  | 13 March 2007     |
| 92-156-GWE    | Correspondence Files, Reference Guide  | Internet | Free  | 14 February 2007  |
| 92-156-GIE    | Correspondence Files, Reference Guide  | PDF      | Free  | 14 February 2007  |
| 92-159-GWE    | Population Ecumene Census Division Cartographic Boundary File, Reference Guide                   | Internet | Free  | 13 March 2007     |
| 92-159-GIE    | Population Ecumene Census Division Cartographic Boundary File, Reference Guide                   | PDF      | Free  | 13 March 2007     |
| 92-160-GWE    | Boundary Files, Reference Guide  | Internet | Free  | 13 March 2007     |
| 92-160-GIE    | Boundary Files, Reference Guide  | PDF      | Free  | 13 March 2007     |
| 92-500-GWE    | Road Network File Reference Guide  | Internet | Free  | 29 September 2006 |
| 92-500-GIE    | Road Network File Reference Guide  | PDF      | Free  | 29 September 2006 |

## Reference maps – 2006 Census

Reference maps show the location of the geographic areas for which census data are tabulated and disseminated. The maps display the boundaries, names and codes of standard geographic areas, as well as major cultural and physical features, such as roads, railroads, coastlines, rivers and lakes.

### What's new?

- The Dissemination Area Reference Maps, by Census Division, for areas outside Census Metropolitan Areas and Census Agglomerations, 2001 Census are discontinued and replaced by the Dissemination Area Reference Maps, by Census Subdivision, for areas outside Census Metropolitan Areas and Census Agglomerations, 2006 Census.
- The complete set of all reference maps for 2006 is available for purchase for \$275 (as PDF files on DVD). The minimum charge for custom orders is \$128. Paper copies of the reference maps can also be purchased. The minimum charge is \$128. Contact us through the National inquiries line 1-800-263-1136 or order on-line through [infostats@statcan.ca](mailto:infostats@statcan.ca).

Over 10,000 reference maps are available for the 2006 Census. Given the diversity in size of these geographic areas, different map scales and map coverages are required to show the appropriate level of detail. Descriptions of each series are provided with the individual catalogue entries below. Individual reference maps can be viewed on the Internet ([www.statcan.ca](http://www.statcan.ca)) and downloaded for free (as PDF files).

### Reference maps – complete set, 2006 Census

The complete set of all reference maps for the 2006 Census is available for purchase as PDF files on DVD.

| Catalogue no. | Medium | Language  | Price | Release date  |
|---------------|--------|-----------|-------|---------------|
| 92-172-XVB    | DVD    | Bilingual | \$275 | 13 March 2007 |

### National reference maps

For the 2006 Census, four national maps (covering all of Canada) produced by Statistics Canada show the location of census metropolitan areas and census agglomerations, census divisions, economic regions and census divisions and the Statistical Area Classification. The maps are produced as part of the Standard Geographic Classification (SGC), Volume II, Reference Maps (Catalogue no. 12-572-XWE).

#### Census Metropolitan Areas and Census Agglomerations, 2006

This map shows the general location of census metropolitan areas and census agglomerations within each province and territory, with large dots designating census metropolitan areas and small dots designating census agglomerations. The map also lists the census metropolitan area and census agglomeration names in census metropolitan area and census agglomeration code order, by province and territory. The scale of this map is 1:7,500,000 (with an inset showing southern Quebec and southern Ontario at 1:4,000,000) and its approximate dimensions are 107 cm by 86 cm (42 inches by 34 inches). The approximate size of the PDF file is 5.6 MB.

### Census Divisions, 2006

This map shows the census division boundaries and codes within each province and territory, on a background of major lakes and rivers. The map also lists the census division names in census division code order, by province and territory. The scale of this map is 1:7,500,000 (with an inset showing southern Quebec and southern Ontario at 1:4,000,000) and its approximate dimensions are 107 cm by 87 cm (42 inches by 34 inches). The approximate size of the PDF file is 6.5 MB.

### Economic Regions and Census Divisions, 2006

This map shows the economic region and census division boundaries and codes within each province and territory. The map also lists, by province and territory, the economic region names in economic region code order, within which their component census division codes and names are numerically listed. The scale of this map is 1: 7,500,000 (with an inset showing southern Quebec and southern Ontario at 1:4,000,000) and its approximate dimensions are 107 cm by 87 cm (42 inches by 34 inches). The approximate size of the PDF file is 6.6 MB.

### Statistical Area Classification, 2006 Census Subdivisions

This map shows census subdivisions classified by colour according to the category of the Statistical Area Classification they are assigned to. The categories include: component of a census metropolitan area/census agglomeration, component of a census metropolitan area and census agglomeration influenced zone (strongly influenced, moderately influenced, weakly influenced or not influenced), or component of the territories (Yukon Territory, Northwest Territories and Nunavut). The scale of this map is 1:7,500,000 (with an inset showing southern Quebec and southern Ontario at 1:4,000,000) and its approximate dimensions are 107 cm by 87 cm (42 inches by 32 inches). The approximate size of the PDF file is 10.8 MB.

| Catalogue no. | Medium   | Language  | Price | Release date    |
|---------------|----------|-----------|-------|-----------------|
| 12-572-XWE    | Internet | English   | Free  | 18 October 2006 |
| 12-572-XWF    | Internet | French    | Free  | 18 October 2006 |
| 12-572-XPB    | Print    | Bilingual | \$135 | 16 January 2007 |

### Federal Electoral Districts (2003 Representation Order) reference map

This national map shows the boundaries, names and codes of federal electoral districts according to the 2003 Representation Order, on a background of major lakes and rivers. Insets show more detail for the congested areas on the map. The federal electoral district map was produced by Natural Resources Canada for Elections Canada. The dimensions of this map are approximately 74 cm by 25 cm (29 inches by 10 inches).

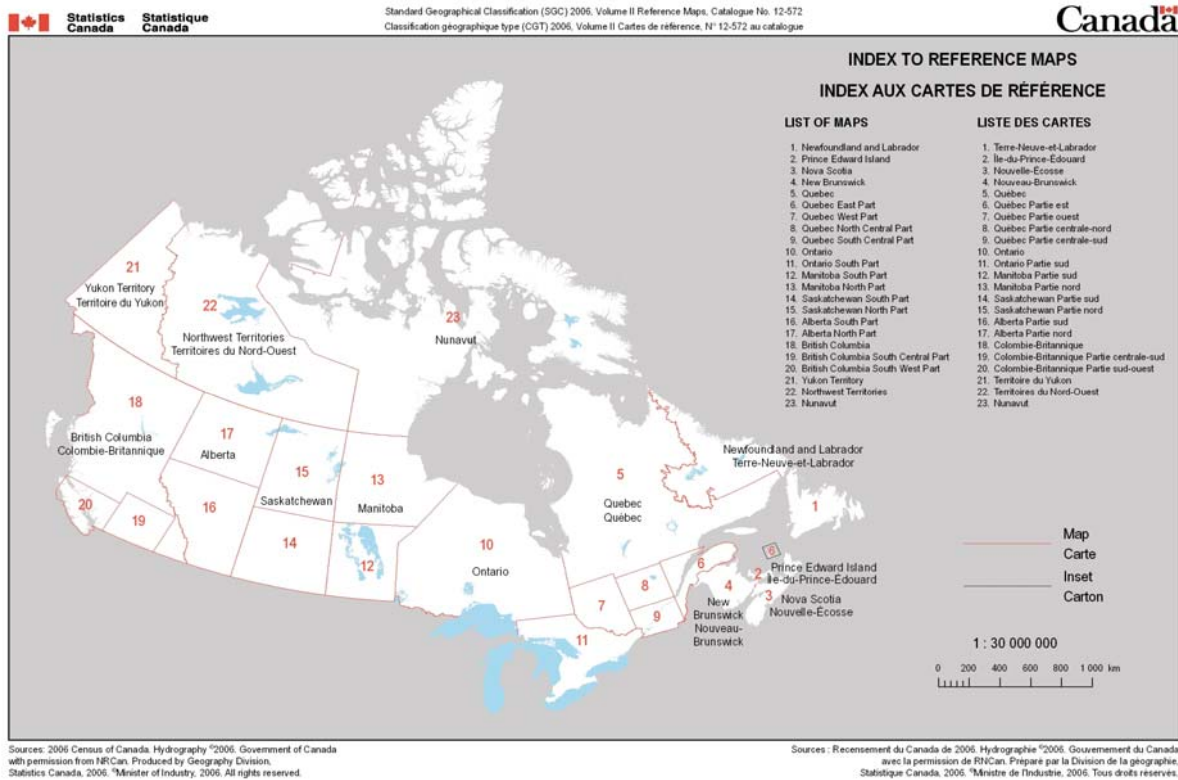
### Census Division and Census Subdivision reference maps

The set of Census Division and Census Subdivision Reference Maps covers all of Canada, by province and territory. The maps show the boundaries, names and codes of census divisions (such as counties and regional districts) and census subdivisions (such as cities, towns, villages, other local municipal entities, townships and Indian reserves). The maps also show the boundaries of census metropolitan areas and census agglomerations. There are 23 maps that vary in scale (ranging from 1:275,000 to 1:4,500,000) and size, the maximum dimensions being approximately 91 cm by 112 cm (36 inches by 44 inches); see Figure 1.2 and Table 1.1. The maps have the same general look as in 2001. A reference guide is available (Catalogue no. 92-149-GIE, GWE).

**Note:** The complete set of Census Division and Census Subdivision Reference Maps is available in the Standard Geographical Classification (SGC), Volume II, Reference Maps (Catalogue no. 12-572-XWE). This publication also includes four maps of Canada at the 1:7,500,000 scale, one showing census divisions, one showing economic regions and census divisions, one showing Statistical Area Classification and one showing point locations of census metropolitan areas and census agglomerations. An index map is also included that shows the areas covered by each provincial or territorial map.

| Catalogue no. | Medium   | Language  | Price | Release date    |
|---------------|----------|-----------|-------|-----------------|
| 12-572-XWE    | Internet | English   | Free  | 18 October 2006 |
| 12-572-XWF    | Internet | French    | Free  | 18 October 2006 |
| 12-572-XPB    | Print    | Bilingual | \$135 | 16 January 2007 |

**Figure 1.2 Index map for census division and census subdivision reference maps**





**Table 1.1 Summary of national, census division and census subdivision reference maps by province and territory (Catalogue no. 12-572-XWE)**

| Map no. | Map title  | Map scale     | Map dimensions (approximate) |        |             |        | Approximate size of PDF file (MB) |
|---------|--|---------------|------------------------------|--------|-------------|--------|-----------------------------------|
|         |  |               | inches                       |        | centimetres |        |                                   |
|         |  |               | width                        | height | width       | height |                                   |
|         | Index to maps  | 1: 30,000,000 | 8.50                         | 11.00  | 22.0        | 28.0   | 1.4                               |
| A       | Canada Census Divisions map                              | 1: 7,500,000  | 42.00                        | 34.00  | 107.0       | 87.0   | 6.5                               |
| B       | Canada Census Metropolitan Area/Census Agglomeration map | 1: 7,500 000  | 42.00                        | 34.00  | 107.0       | 87.0   | 5.6                               |
| C       | Canada Statistical Area Classification map               | 1: 7,500,000  | 42.00                        | 34.00  | 107.0       | 87.0   | 10.8                              |
| D       | Canada Economic Regions map                              | 1: 7,500,000  | 42.00                        | 34.00  | 107.0       | 87.0   | 6.6                               |
| 1       | Newfoundland and Labrador                                | 1 : 700,000   | 36.00                        | 40.00  | 92.0        | 102.0  | 3.6                               |
| 2       | Prince Edward Island                                     | 1: 275,000    | 34.00                        | 26.00  | 87.0        | 67.0   | 0.7                               |
| 3       | Nova Scotia  | 1 : 800,000   | 34.00                        | 28.00  | 87.0        | 72.0   | 2.5                               |
| 4       | New Brunswick  | 1 : 700,000   | 34.00                        | 28.00  | 87.0        | 72.0   | 2.5                               |
| 5       | Quebec   | 1 : 2,500,000 | 34.00                        | 36.00  | 87.0        | 92.0   | 4.9                               |
| 6       | Quebec East Part   | 1 : 600,000   | 38.00                        | 35.00  | 97.0        | 89.0   | 3.5                               |
| 7       | Quebec West Part   | 1 : 450,000   | 34.00                        | 44.00  | 87.0        | 112.0  | 3.3                               |
| 8       | Quebec North Central Part                                | 1 : 450,000   | 36.38                        | 26.88  | 93.0        | 69.0   | 2.0                               |
| 9       | Quebec South Central Part                                | 1 : 350,000   | 39.00                        | 34.00  | 100.0       | 87.0   | 3.4                               |
| 10      | Ontario  | 1 : 2,000,000 | 36.00                        | 40.00  | 92.0        | 102.0  | 5.0                               |
| 11      | Ontario South Part                                       | 1 : 800,000   | 44.00                        | 36.00  | 112.0       | 92.0   | 6.4                               |
| 12      | Manitoba South Part                                      | 1 : 850,000   | 34.00                        | 30.00  | 87.0        | 77.0   | 2.9                               |
| 13      | Manitoba North Part                                      | 1 : 850,000   | 43.00                        | 36.00  | 110.0       | 92.0   | 1.4                               |
| 14      | Saskatchewan South Part                                  | 1 : 850,000   | 40.00                        | 30.00  | 102.0       | 77.0   | 2.4                               |
| 15      | Saskatchewan North Part                                  | 1 : 850,000   | 36.00                        | 36.00  | 92.0        | 92.0   | 1.3                               |
| 16      | Alberta South Part                                       | 1 : 850,000   | 37.00                        | 36.00  | 94.0        | 92.0   | 2.4                               |
| 17      | Alberta North Part                                       | 1 : 850,000   | 42.00                        | 30.00  | 107.0       | 77.0   | 0.8                               |
| 18      | British Columbia   | 1 : 2,000,000 | 36.00                        | 33.00  | 92.0        | 84.0   | 2.9                               |
| 19      | British Columbia South Central Part                      | 1 : 400,000   | 44.00                        | 36.00  | 112.0       | 92.0   | 1.3                               |
| 20      | British Columbia South West Part                         | 1 : 400,000   | 44.00                        | 36.00  | 112.0       | 92.0   | 1.8                               |
| 21      | Yukon Territory  | 1 : 2,000,000 | 23.00                        | 28.00  | 59.0        | 72.0   | 1.9                               |
| 22      | Northwest Territories                                    | 1 : 4,000,000 | 23.00                        | 28.00  | 59.0        | 72.0   | 5.8                               |
| 23      | Nunavut  | 1 : 4,500,000 | 30.00                        | 38.00  | 77.0        | 97.0   | 9.9                               |



## Census Tract Reference Maps, by Census Metropolitan Areas or Census Agglomerations

The Census Tract Reference Maps, by Census Metropolitan Areas or Census Agglomerations cover all 33 census metropolitan areas and the 15 census agglomerations in the Census Tract Program. The maps show the boundaries and names of census tracts and census subdivisions, designated places and their names, as well as urban core, secondary urban core, urban fringe and rural fringe within the census metropolitan areas or census agglomerations, with one to 10 maps covering each area. There are 131 maps in the series and inset maps were created to show detail for the more concentrated areas.

The maps also display census subdivision boundaries with detailed street network and other visible features such as railroads, rivers and lakes. The maps vary in scale and size; the maximum dimensions are 86 cm by 61 cm (34 inches by 24 inches). The PDF file sizes range from 0.15 MB to 6.5 MB.

The maps are in colour. A reference guide is available (92-146-GIE, GWE).

| Catalogue no. | Medium | Language  | Price | Release date  |
|---------------|--------|-----------|-------|---------------|
| 92-146-UIB    | PDF    | Bilingual | Free  | 13 March 2007 |

Figure 1.3 Example of a census tract reference map

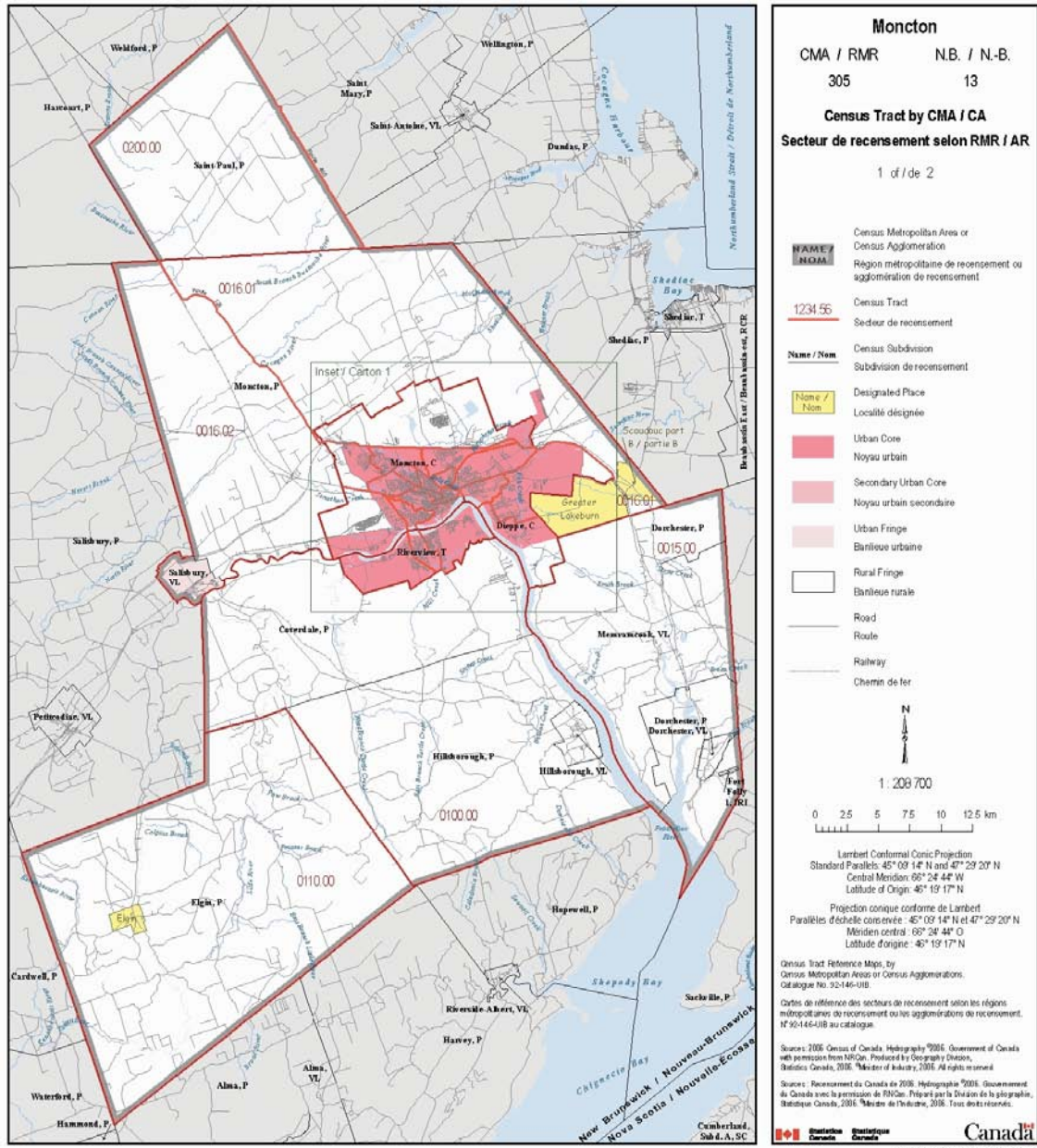
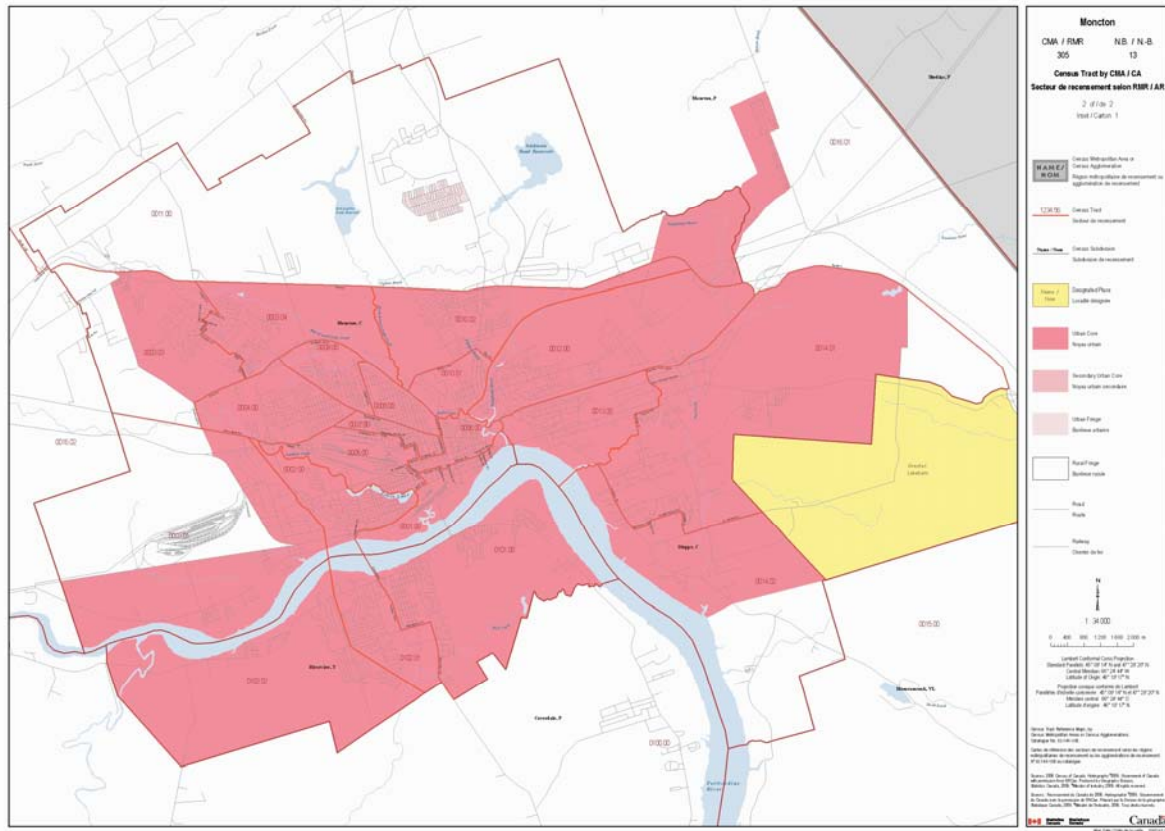


Figure 1.4 Detail from a census tract reference map



**Table 1.2 Summary of census tract reference maps by census metropolitan areas or census agglomerations (Catalogue no. 92-146-UIB)**

| Census metropolitan area (CMA) / Census agglomeration (CA) name | Number of maps | Census metropolitan area (CMA) / Census agglomeration (CA) name | Number of maps |
|---|----------------|---|----------------|
| Abbotsford, B.C. (CMA)  | 1              | North Bay, Ont. (CA)  | 1              |
| Barrie, Ont. (CMA)  | 1              | Oshawa, Ont. (CMA)  | 2              |
| Belleville, Ont. (CA)   | 2              | Ottawa - Gatineau, Ont./Que. (CMA)                              | 4              |
| Brantford, Ont. (CMA)   | 2              | Peterborough, Ont. (CMA)  | 2              |
| Calgary, Alta. (CMA)  | 5              | Prince George, B.C. (CA)  | 2              |
| Chilliwack, B.C. (CA)   | 3              | Québec, Que. (CMA)  | 3              |
| Drummondville, Que. (CA)  | 1              | Red Deer, Alta. (CA)  | 1              |
| Edmonton, Alta. (CMA)   | 4              | Regina, Sask. (CMA)   | 2              |
| Fredericton, N.B. (CA)  | 2              | Saguenay, Que. (CMA)  | 2              |
| Granby, Que. (CA)   | 1              | Saint John, N.B. (CMA)  | 2              |
| Greater Sudbury / Grand Sudbury, Ont. (CMA)                     | 2              | Saint-Jean-sur-Richelieu, Que. (CA)                             | 1              |
| Guelph, Ont. (CMA)  | 1              | Sarnia, Ont. (CA)   | 2              |
| Halifax, N.S. (CMA)   | 3              | Saskatoon, Sask. (CMA)  | 2              |
| Hamilton, Ont. (CMA)  | 4              | Sault Ste. Marie, Ont. (CA)                                     | 3              |
| Kamloops, B.C. (CA)   | 4              | Sherbrooke, Que. (CMA)  | 2              |
| Kelowna, B.C. (CMA)   | 3              | St. Catharines - Niagara, Ont. (CMA)                            | 4              |
| Kingston, Ont. (CMA)  | 2              | St. John's, N.L. (CMA)  | 2              |
| Kitchener, Ont. (CMA)   | 3              | Thunder Bay, Ont. (CMA)   | 2              |
| Lethbridge, Alta. (CA)  | 2              | Toronto, Ont. (CMA)   | 10             |
| London, Ont. (CMA)  | 3              | Trois-Rivières, Que. (CMA)                                      | 2              |
| Medicine Hat, Alta. (CA)  | 3              | Vancouver, B.C. (CMA)   | 8              |
| Moncton, N.B. (CMA)   | 2              | Victoria, B.C. (CMA)  | 2              |
| Montréal, Que. (CMA)  | 10             | Windsor, Ont. (CMA)   | 2              |
| Nanaimo, B.C. (CA)  | 2              | Winnipeg, Man. (CMA)  | 2              |

## Dissemination Area Reference Maps, by Census Tracts, for Census Metropolitan Areas and Census Agglomerations

The Dissemination Areas Reference Maps, by Census Tracts, for Census Metropolitan Area and Census Agglomeration, cover all 33 census metropolitan areas and the 15 census agglomerations that are part of the Census Tract Program. Each map in the series covers one census tract and displays the boundaries and codes of dissemination areas within that tracted area. There are 5,269 maps and inset maps were created to show detail for the more concentrated areas.

The maps display census tract, census subdivision, and census metropolitan area or census agglomeration boundaries with street network and other visible features such as railroads, rivers and lakes. The dimensions of each map are 27 cm by 43 cm (11 inches by 17 inches). Map scales vary according to the size of the census tract; thus the maps cannot be cut and pasted together. The PDF file sizes range from 0.15 MB to 2.3 MB.

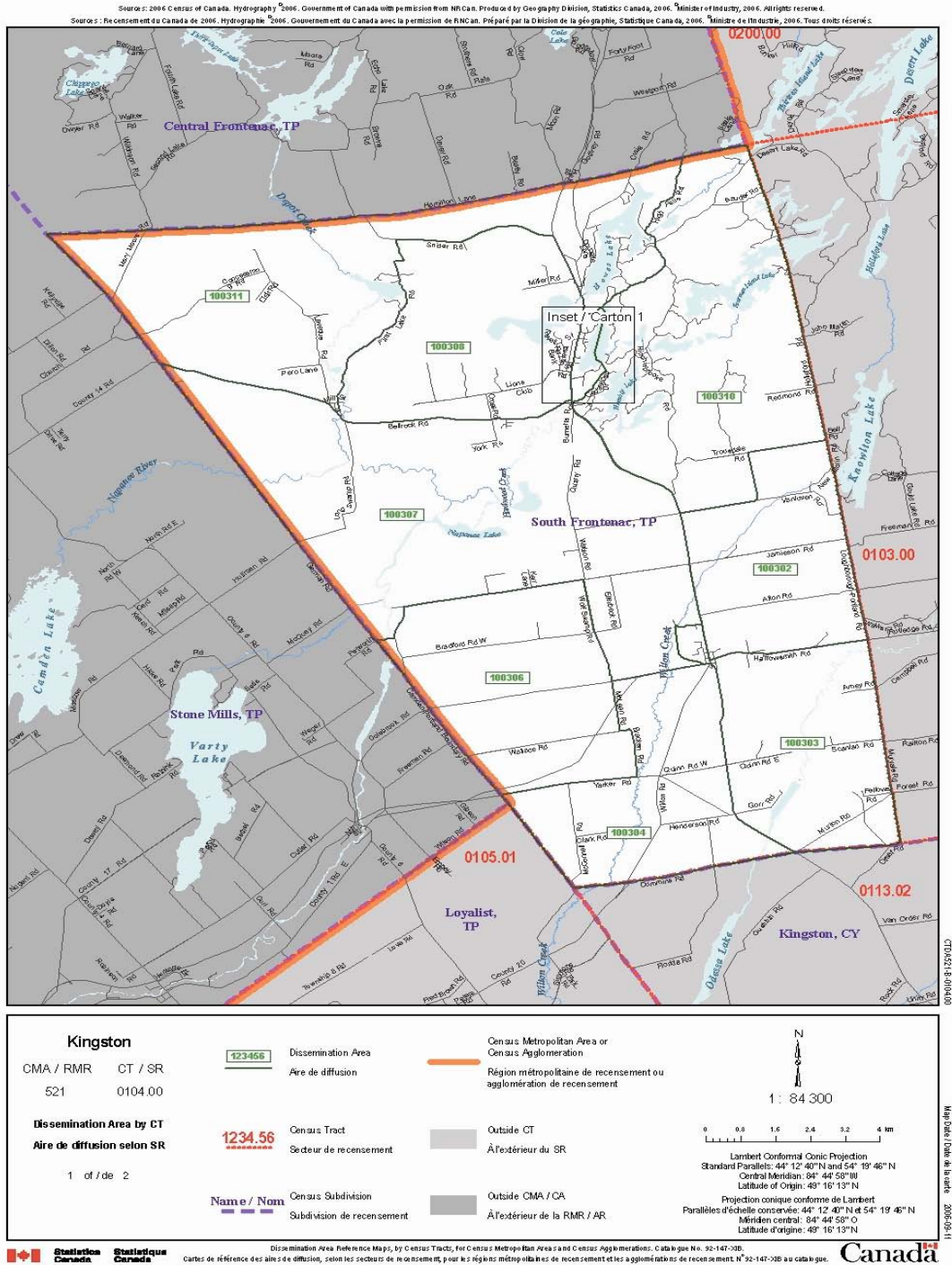
Dissemination area reference maps are also available for non-tracted census agglomerations (92-148-UIB), and by census subdivision for areas outside census metropolitan areas and census agglomerations (92-145-UIB). Together, the three sets of dissemination area maps cover all of Canada.

A reference guide is available (92-145-GIE, GWE).

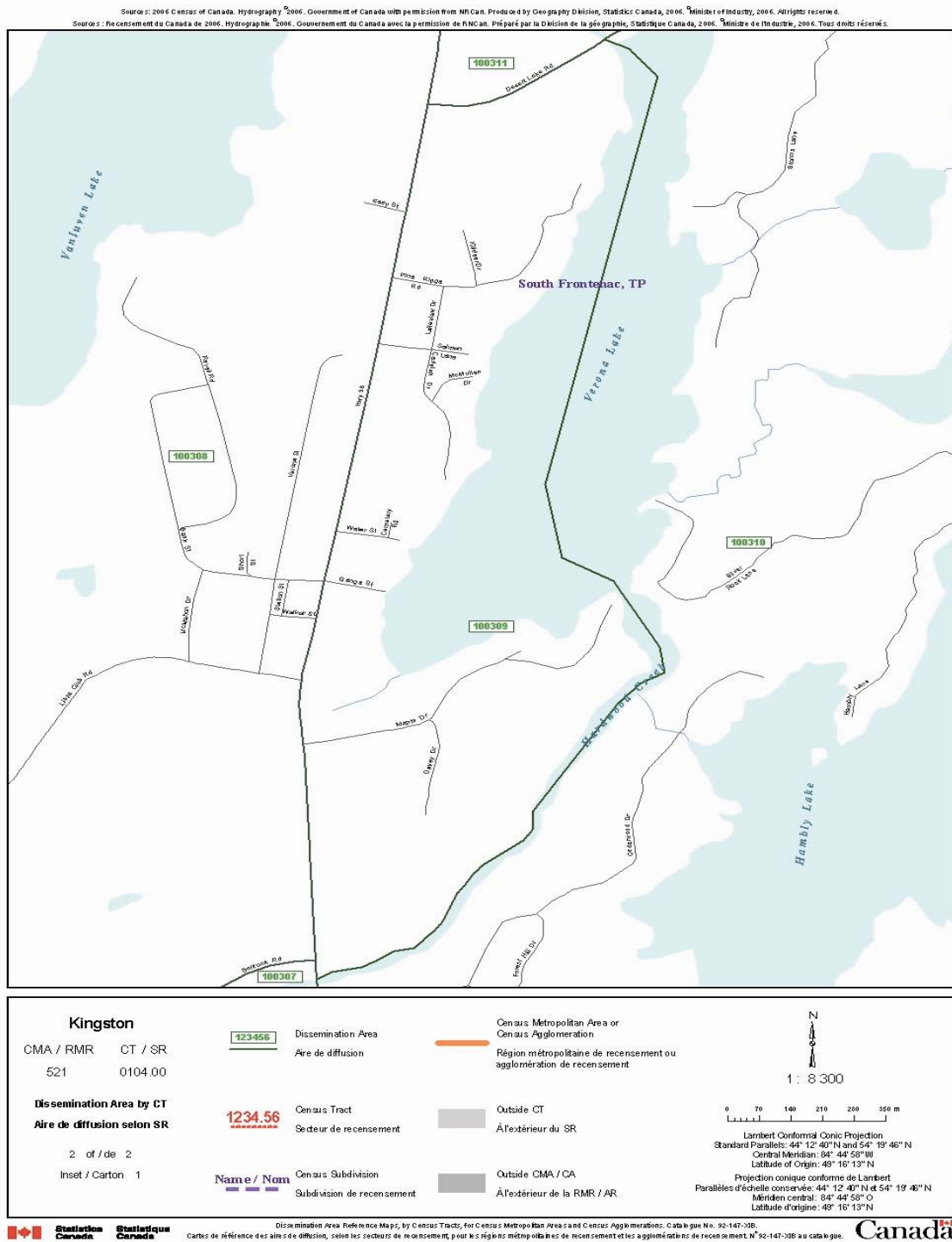
| Catalogue no. | Medium | Language  | Price | Release date    |
|---------------|--------|-----------|-------|-----------------|
| 92-147-XIB    | PDF    | Bilingual | Free  | 16 January 2007 |



**Figure 1.5 Example of a dissemination area reference map by census tracts for census metropolitan areas and census agglomerations**



**Figure 1.6 Detail from a dissemination area reference map by census tracts for census metropolitan areas and census agglomerations**



**Table 1.3 Summary of dissemination area reference maps by census tract for census metropolitan area and census agglomeration (Catalogue no. 92-147-XIB)**

| Census metropolitan area (CMA) or census agglomeration (CA) |   | Number of census tracts | Number of PDFs |
|---|---|-------------------------|----------------|
| Code  | Name  |                         |                |
| 932   | Abbotsford, B.C. (CMA)                      | 35                      | 37             |
| 568   | Barrie, Ont. (CMA)                          | 32                      | 34             |
| 522   | Belleville, Ont. (CA)                       | 33                      | 34             |
| 543   | Brantford, Ont. (CMA)                       | 28                      | 31             |
| 825   | Calgary, Alta. (CMA)                        | 203                     | 214            |
| 930   | Chilliwack, B.C. (CA)                       | 30                      | 33             |
| 447   | Drummondville, Que. (CA)                    | 17                      | 19             |
| 835   | Edmonton, Alta. (CMA)                       | 229                     | 242            |
| 320   | Fredericton, N.B. (CA)                      | 26                      | 30             |
| 450   | Granby, Que. (CA)                           | 18                      | 18             |
| 580   | Greater Sudbury / Grand Sudbury, Ont. (CMA) | 42                      | 45             |
| 550   | Guelph, Ont. (CMA)                          | 29                      | 30             |
| 205   | Halifax, N.S. (CMA)                         | 88                      | 93             |
| 537   | Hamilton, Ont. (CMA)                        | 178                     | 178            |
| 925   | Kamloops, B.C. (CA)                         | 27                      | 30             |
| 915   | Kelowna, B.C. (CMA)                         | 36                      | 40             |
| 521   | Kingston, Ont. (CMA)                        | 40                      | 42             |
| 541   | Kitchener, Ont. (CMA)                       | 93                      | 95             |
| 810   | Lethbridge, Alta. (CA)                      | 27                      | 27             |
| 555   | London, Ont. (CMA)                          | 104                     | 108            |
| 805   | Medicine Hat, Alta. (CA)                    | 16                      | 17             |
| 305   | Moncton, N.B. (CMA)                         | 27                      | 30             |
| 462   | Montréal, Que. (CMA)                        | 878                     | 905            |
| 938   | Nanaimo, B.C. (CA)                          | 20                      | 22             |
| 575   | North Bay, Ont. (CA)                        | 20                      | 21             |
| 532   | Oshawa, Ont. (CMA)                          | 73                      | 78             |
| 505   | Ottawa - Gatineau, Ont./Que. (CMA)          | 251                     | 261            |
| 529   | Peterborough, Ont. (CMA)                    | 27                      | 28             |
| 970   | Prince George, B.C. (CA)                    | 27                      | 27             |
| 421   | Québec, Que. (CMA)                          | 166                     | 178            |
| 830   | Red Deer, Alta. (CA)                        | 16                      | 16             |
| 705   | Regina, Sask. (CMA)                         | 52                      | 56             |
| 408   | Saguenay, Que. (CMA)                        | 37                      | 43             |
| 310   | Saint John, N.B. (CMA)                      | 46                      | 49             |
| 459   | Saint-Jean-sur-Richelieu, Que. (CA)         | 35                      | 35             |
| 562   | Sarnia, Ont. (CA)                           | 24                      | 25             |
| 725   | Saskatoon, Sask. (CMA)                      | 53                      | 60             |



**Table 1.3 Summary of dissemination area reference maps by census tract for census metropolitan area and census agglomeration (continued)**

| Census metropolitan area (CMA) or census agglomeration (CA) |                                      | Number of census tracts | Number of PDFs |
|---|--------------------------------------|-------------------------|----------------|
| Code  | Name                                 |                         |                |
| 590   | Sault Ste. Marie, Ont. (CA)          | 23                      | 24             |
| 433   | Sherbrooke, Que. (CMA)               | 41                      | 44             |
| 539   | St. Catharines - Niagara, Ont. (CMA) | 93                      | 93             |
| 001   | St. John's, N.L. (CMA)               | 46                      | 50             |
| 595   | Thunder Bay, Ont. (CMA)              | 33                      | 34             |
| 535   | Toronto, Ont. (CMA)                  | 1,003                   | 1,018          |
| 442   | Trois-Rivières, Que. (CMA)           | 37                      | 40             |
| 933   | Vancouver, B.C. (CMA)                | 410                     | 421            |
| 935   | Victoria, B.C. (CMA)                 | 69                      | 69             |
| 559   | Windsor, Ont. (CMA)                  | 70                      | 70             |
| 602   | Winnipeg, Man. (CMA)                 | 168                     | 175            |
| <b>Total</b>  |                                      | <b>5,076</b>            | <b>5,269</b>   |

### Dissemination Areas Reference Maps, by Non-Tracted Census Agglomerations

The Dissemination Area Reference Maps, by Non-tracted Census Agglomerations cover smaller census agglomerations that are not part of the census tract program. Each map in the series covers one census agglomeration and displays the boundaries and codes of dissemination areas, designated places and their names, urban core, urban fringe and rural fringe, within that census agglomeration. There are 271 maps in this series and inset maps were created to show detail for the more concentrated areas.

The maps also display census subdivision boundaries with detailed street network and other visible features such as railroads, rivers and lakes. The maps vary in scale and size, the maximum dimensions being 86 cm by 61 cm (34 inches by 24 inches). The PDF file sizes range from 0.17 MB to 2.4 MB.

Dissemination area reference maps are also available by census tracts for census metropolitan areas and census agglomerations (92-147-XIB) and by census subdivisions for areas outside census metropolitan areas and census agglomerations (92-145-UIB). Together, the three sets of dissemination area maps cover all of Canada.

The maps are in colour. A reference guide is available (Catalogue no. 92-145-GIE, GWE).

| Catalogue no. | Medium | Language  | Price | Release date  |
|---------------|--------|-----------|-------|---------------|
| 92-148-UIB    | PDF    | Bilingual | Free  | 13 March 2007 |

Figure 1.7 Example of a dissemination area reference map by non-tracted census agglomerations

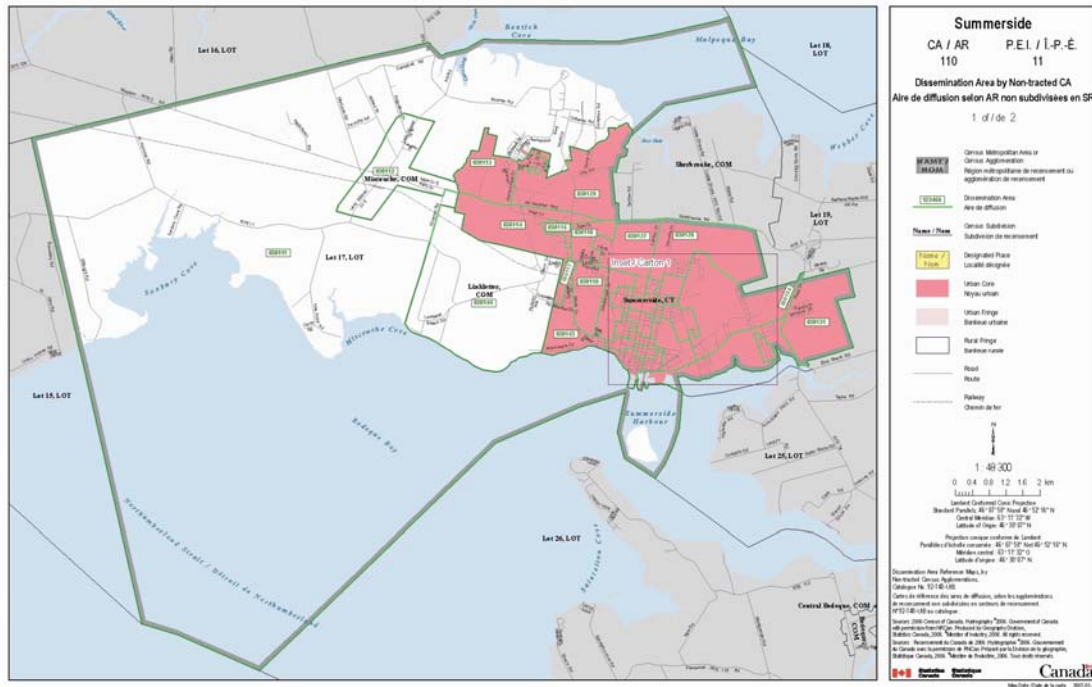
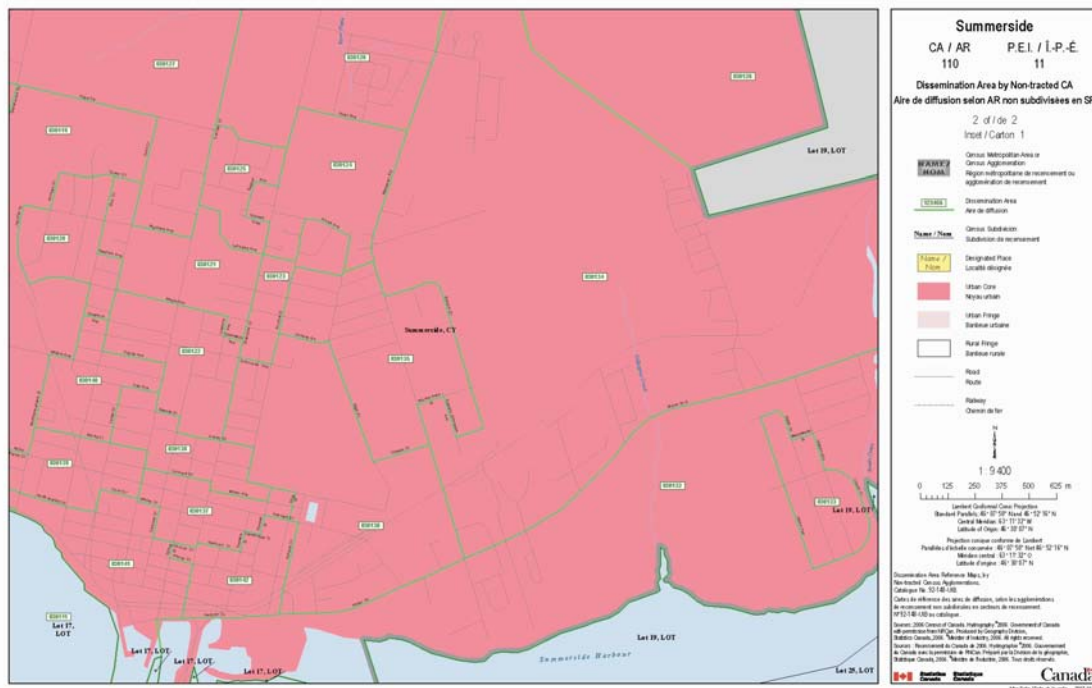


Figure 1.8 Detail from a dissemination area reference map by non-tracted census agglomerations



**Table 1.4 Summary of dissemination area reference maps by non-tracted census agglomeration  
(Catalogue no. 92-148-UIB)**

| Census agglomeration |                           | Number of PDFs | Census agglomeration |                                | Number of PDFs |
|----------------------|---------------------------|----------------|----------------------|--------------------------------|----------------|
| Code                 | Name                      |                | Code                 | Name                           |                |
| 410                  | Alma, Que.                | 3              | 220                  | New Glasgow, N.S.              | 4              |
| 481                  | Amos, Que.                | 2              | 547                  | Norfolk, Ont.                  | 6              |
| 406                  | Baie-Comeau, Que.         | 4              | 735                  | North Battleford, Sask.        | 2              |
| 328                  | Bathurst, N.B.            | 3              | 820                  | Okotoks, Alta.                 | 1              |
| 005                  | Bay Roberts, N.L.         | 1              | 569                  | Orillia, Ont.                  | 4              |
| 610                  | Brandon, Man.             | 3              | 566                  | Owen Sound, Ont.               | 2              |
| 512                  | Brockville, Ont.          | 2              | 939                  | Parksville, B.C.               | 3              |
| 806                  | Brooks, Alta.             | 5              | 515                  | Pembroke, Ont.                 | 2              |
| 944                  | Campbell River, B.C.      | 3              | 913                  | Penticton, B.C.                | 3              |
| 330                  | Campbellton, N.B.         | 3              | 516                  | Petawawa, Ont.                 | 1              |
| 833                  | Camrose, Alta.            | 1              | 940                  | Port Alberni, B.C.             | 3              |
| 828                  | Canmore, Alta.            | 2              | 528                  | Port Hope, Ont.                | 2              |
| 225                  | Cape Breton, N.S.         | 8              | 607                  | Portage la Prairie, Man.       | 2              |
| 531                  | Centre Wellington, Ont.   | 2              | 945                  | Powell River, B.C.             | 2              |
| 105                  | Charlottetown, P.E.I.     | 4              | 745                  | Prince Albert, Sask.           | 2              |
| 556                  | Chatham-Kent, Ont.        | 9              | 955                  | Prince Rupert, B.C.            | 2              |
| 527                  | Cobourg, Ont.             | 1              | 952                  | Quesnel, B.C.                  | 9              |
| 845                  | Cold Lake, Alta.          | 1              | 404                  | Rimouski, Que.                 | 2              |
| 567                  | Collingwood, Ont.         | 2              | 405                  | Rivière-du-Loup, Que.          | 2              |
| 015                  | Corner Brook, N.L.        | 3              | 485                  | Rouyn-Noranda, Que.            | 3              |
| 501                  | Cornwall, Ont.            | 2              | 428                  | Saint-Georges, Que.            | 2              |
| 943                  | Courtenay, B.C.           | 3              | 452                  | Saint-Hyacinthe, Que.          | 2              |
| 437                  | Cowansville, Que.         | 2              | 465                  | Salaberry-de-Valleyfield, Que. | 2              |
| 905                  | Cranbrook, B.C.           | 3              | 920                  | Salmon Arm, B.C.               | 2              |
| 975                  | Dawson Creek, B.C.        | 1              | 412                  | Sept-Îles, Que.                | 3              |
| 411                  | Dolbeau-Mistassini, Que.  | 2              | 444                  | Shawinigan, Que.               | 5              |
| 937                  | Duncan, B.C.              | 5              | 454                  | Sorel-Tracy, Que.              | 3              |
| 335                  | Edmundston, N.B.          | 3              | 934                  | Squamish, B.C.                 | 3              |
| 582                  | Elliot Lake, Ont.         | 2              | 553                  | Stratford, Ont.                | 1              |
| 750                  | Estevan, Sask.            | 2              | 110                  | Summerside, P.E.I.             | 2              |
| 977                  | Fort St. John, B.C.       | 2              | 720                  | Swift Current, Sask.           | 2              |
| 010                  | Grand Falls-Windsor, N.L. | 1              | 584                  | Temiskaming Shores, Ont.       | 3              |
| 850                  | Grande Prairie, Alta.     | 6              | 965                  | Terrace, B.C.                  | 2              |
| 502                  | Hawkesbury, Ont.          | 1              | 430                  | Thetford Mines, Que.           | 3              |
| 533                  | Ingersoll, Ont.           | 1              | 640                  | Thompson, Man.                 | 3              |
| 456                  | Joliette, Que.            | 2              | 546                  | Tillsonburg, Ont.              | 1              |
| 530                  | Kawartha Lakes, Ont.      | 3              | 586                  | Timmins, Ont.                  | 3              |
| 598                  | Kenora, Ont.              | 1              | 215                  | Truro, N.S.                    | 2              |
| 210                  | Kentville, N.S.           | 2              | 480                  | Val-d'Or, Que.                 | 4              |
| 960                  | Kitimat, B.C.             | 2              | 918                  | Vernon, B.C.                   | 2              |

**Table 1.4 Summary of dissemination area reference maps by non-tracted census agglomeration**  
(continued)

| Census agglomeration |                     | Number of PDFs | Census agglomeration |                     | Number of PDFs |
|----------------------|---------------------|----------------|----------------------|---------------------|----------------|
| Code                 | Name                |                | Code                 | Name                |                |
| 446                  | La Tuque, Que.      | 5              | 440                  | Victoriaville, Que. | 3              |
| 468                  | Lachute, Que.       | 1              | 865                  | Wetaskiwin, Alta.   | 1              |
| 557                  | Leamington, Ont.    | 3              | 990                  | Whitehorse, Y.T.    | 4              |
| 840                  | Lloydminster, Alta. | 3              | 950                  | Williams Lake, B.C. | 2              |
| 403                  | Matane, Que.        | 2              | 860                  | Wood Buffalo, Alta. | 19             |
| 571                  | Midland, Ont.       | 2              | 544                  | Woodstock, Ont.     | 1              |
| 329                  | Miramichi, N.B.     | 4              | 995                  | Yellowknife, N.W.T. | 2              |
| 715                  | Moose Jaw, Sask.    | 2              | 710                  | Yorkton, Sask.      | 2              |

**Note:** Total number of PDFs = 271

### Dissemination Area Reference Maps, by Census Subdivisions, for areas outside Census Metropolitan Areas and Census Agglomerations

The Dissemination Area Reference Maps, by Census Subdivisions, for areas outside Census Metropolitan Areas and Census Agglomerations cover areas outside census metropolitan areas and census agglomerations. Each map in this series covers one census subdivision and displays the boundaries and codes of dissemination areas, designated places and their names, as well as urban and rural areas within that census subdivision. There are 4,470 maps in this series.

The maps also display census subdivision boundaries with detailed street network and other visible features such as railroads, rivers and lakes. The maps vary in scale and size; the maximum dimensions are 86 cm by 61 cm (34 inches by 24 inches). The PDF file sizes range from 0.17 MB to 6.0 MB.

Dissemination areas reference maps are also available by census tracts for census metropolitan areas and census agglomerations (92-147-XIB), and by non-tracted census agglomerations (92-148-UIB). Together, the three sets of dissemination area maps cover all of Canada.

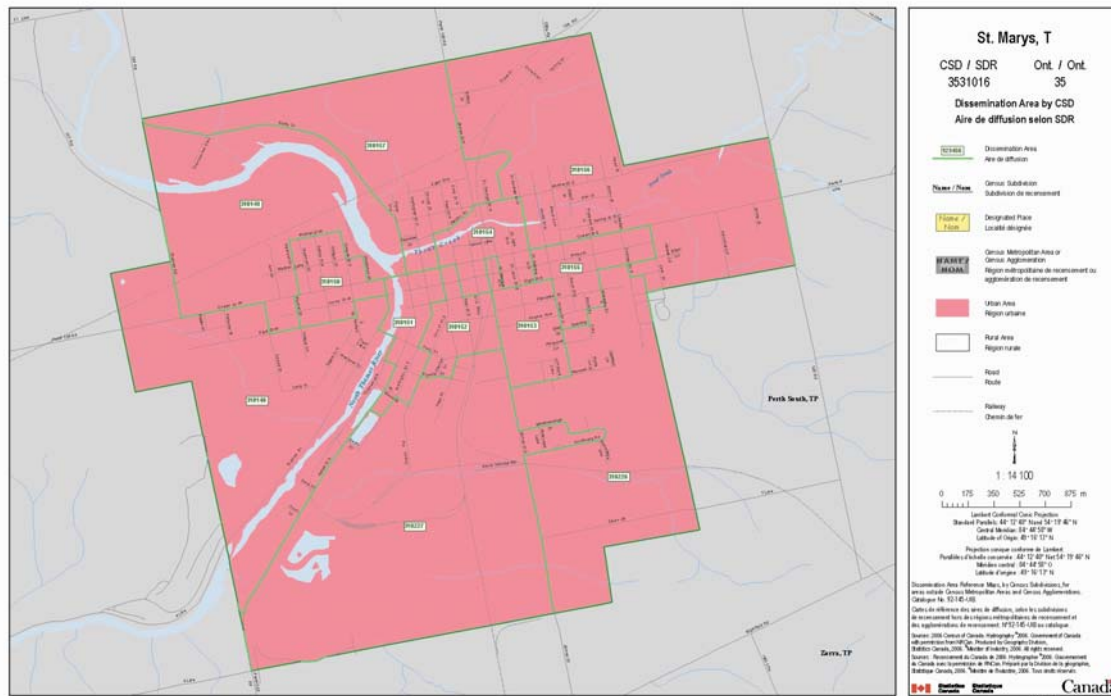
The maps are in colour. A reference guide is available (92-145-GIE, GWE).

| Catalogue no. | Medium | Language  | Price | Release date  |
|---------------|--------|-----------|-------|---------------|
| 92-145-UIB    | PDF    | Bilingual | Free  | 13 March 2007 |

**Table 1.5 Summary of dissemination area reference maps by census subdivisions, for areas outside census metropolitan areas and census agglomerations within each province and territory**

| Province/territory name   | Number of dissemination area reference maps by census subdivisions, for areas outside census metropolitan areas and census agglomerations |
|---------------------------|---|
| Newfoundland and Labrador | 350   |
| Prince Edward Island      | 90  |
| Nova Scotia               | 77  |
| New Brunswick             | 207   |
| Quebec                    | 1,066   |
| Ontario                   | 440   |
| Manitoba                  | 274   |
| Saskatchewan              | 919   |
| Alberta                   | 353   |
| British Columbia          | 597   |
| Yukon Territory           | 30  |
| Northwest Territories     | 36  |
| Nunavut                   | 31  |
| <b>Total</b>              | <b>4,470</b>  |

**Figure 1.9 Example of a dissemination area reference map by census subdivision for areas outside census metropolitan areas and census agglomerations**



## Thematic maps – 2006 Census

A thematic map shows the spatial distribution of one or more specific data themes for standard geographic areas. Thematic maps showing 2006 Census data can be viewed on the Internet ([www.statcan.ca](http://www.statcan.ca)) and downloaded for free (as PDF files).

The following maps are available.

### National

50 years of population change, 1956 to 2006 (animated map)  
 Population change, 2001 to 2006, by 2006 Census Division (CD)  
 Statistical Area Classification, 2006 by 2006 Census Subdivision (CSD)

### Regional

Greater Golden Horseshoe population change, 2001 to 2006 by 2006 Census Subdivisions  
 Montréal CMA population change, 2001 to 2006 by 2006 Census Subdivisions  
 Toronto CMA population change, 2001 to 2006 by 2006 Census Subdivisions

### Census metropolitan area

Montréal 35 years of population change (animated map)  
 Ottawa - Gatineau 35 years of population change (animated map)  
 Toronto 35 years of population change (animated map)  
 Calgary 35 years of population change (animated map)  
 Edmonton 35 years of population change (animated map)  
 Vancouver 35 years of population change (animated map)

In addition, thematic maps demonstrating Population Change (2001 – 2006) by 2006 Census Tracts, for all census metropolitan areas are available. The maps are in colour (map dimensions: 21.6cm x 27.9cm or 8.5 inches x 11 inches) for the following census metropolitan areas (CMAs):

|                                     |                              |                                |
|-------------------------------------|------------------------------|--------------------------------|
| Abbotsford, B.C.                    | Kitchener, Ont.              | Saskatoon, Sask.               |
| Barrie, Ont.                        | London, Ont.                 | Sherbrooke, Que.               |
| Brantford, Ont.                     | Moncton, N.B.                | St. Catharines - Niagara, Ont. |
| Calgary Alta.                       | Montréal, Que.               | St. John's, N.L.               |
| Edmonton, Alta.                     | Oshawa, Ont.                 | Thunder Bay, Ont.              |
| Greater Sudbury/Grand Sudbury, Ont. | Ottawa - Gatineau, Ont./Que. | Toronto, Ont.                  |
| Guelph, Ont.                        | Peterborough, Ont.           | Trois-Rivières, Que.           |
| Halifax, N.S.                       | Québec, Que.                 | Vancouver, B.C.                |
| Hamilton, Ont.                      | Regina, Sask.                | Victoria, B.C.                 |
| Kelowna, B.C.                       | Saguenay, Que.               | Windsor, Ont.                  |
| Kingston, Ont.                      | Saint John, N.B.             | Winnipeg, Man.                 |

| Catalogue no. | Title                      | Medium | Language | Price | Release date  |
|---------------|----------------------------|--------|----------|-------|---------------|
| 92-173-XIE    | Thematic Maps, 2006 Census | PDF    | English  | Free  | 13 March 2007 |
| 92-173-XIF    | Thematic Maps, 2006 Census | PDF    | French   | Free  | 13 March 2007 |



## Geography Working Paper Series

The Geography Working Paper Series is intended to stimulate discussion on a variety of topics covering conceptual, methodological or technical work to support the development and dissemination of the division's data, products and services. Readers of the series are encouraged to contact the Geography Division with comments and suggestions at GEO-Help 613-951-3889.

The working papers are available for free on the Internet (<http://www.statcan.ca>). A print version is also available for a nominal charge.

| Catalogue no. | Title                          | Medium   | Language | Price |
|---------------|--------------------------------|----------|----------|-------|
| 92F0138MWE    | Geography Working Paper Series | Internet | English  | Free  |
| 92F0138MWF    | Geography Working Paper Series | Internet | French   | Free  |
| 92F0138MIE    | Geography Working Paper Series | PDF      | English  | Free  |
| 92F0138MIF    | Geography Working Paper Series | PDF      | French   | Free  |
| 92F0138MPE    | Geography Working Paper Series | Print    | English  | Fee   |
| 92F0138MPF    | Geography Working Paper Series | Print    | French   | Fee   |

**Table 1.6 Titles in the geography working paper series<sup>1</sup>**

| Catalogue numbers                      | Working paper title  |
|--|--|
| 92F0138MWE2007001<br>92F0138MIE2007001 | How Postal Codes Map to Geographic Areas   |
| 92F0138MIE2003002                      | Preliminary 2006 Census Metropolitan Area and Census Agglomerations Delineation  |
| 92F0138MIE2003001                      | Reviewing Census Metropolitan Areas (CMA) and Census Agglomerations (CA) in Canada According to Metropolitan Functionality |

1. As of January 2007.

## Interim List of Changes to Municipal Boundaries, Status and Names

The Interim List is a report that provides a summary of changes to municipal boundaries, status and names. The list is produced on an annual basis for changes that occurred during the previous year. The Geography Division of Statistics Canada processes the municipal changes based on information received through provincial/territorial gazettes, letters patent, and orders-in-council. The Interim List may or may not include all those changes that have occurred within the given time period.

| Catalogue no. | Medium | Language  | Price | Release date |
|---------------|--------|-----------|-------|--------------|
| 92F0009XIB    | PDF    | Bilingual | Free  | Annual       |

## Standard Geographical Classification

The Standard Geographical Classification is a system of names and codes representing areas of Canada. It consists of a three-tiered hierarchy – province or territory, census division and census subdivisions. This relationship is reflected in the seven-digit code. The Standard Geographical Classification is used to identify information for particular geographical areas and to tabulate statistics.

Information about the 2006 Standard Geographical Classification is organized into two volumes.

### Standard Geographical Classification. Volume I. The Classification

Volume I, The Classification, is designed as a reference and coding manual. The classification volume contains tables of Standard Geographical Classification units with their names and codes, related areas based upon the Standard Geographical Classification and an alphabetical index of place names. It summarizes all changes occurring between 2001 and 2006 that impact directly upon the Standard Geographical Classification.

| Catalogue no. | Medium   | Language | Price | Release date    |
|---------------|----------|----------|-------|-----------------|
| 12-571-XWE    | Internet | English  | Free  | 16 January 2007 |
| 12-571-XWF    | Internet | French   | Free  | 16 January 2007 |
| 12-571-XIE    | PDF      | English  | Free  | 16 January 2007 |
| 12-571-XIF    | PDF      | French   | Free  | 16 January 2007 |

### Standard Geographical Classification. Volume II. Reference Maps

Volume II, Reference Maps, shows the boundaries, names and Standard Geographical Classification codes of all census divisions and census subdivisions in Canada, in effect on January 1, 2006. It also provides the names, codes and areal extent of census metropolitan areas and census agglomerations. National maps show the boundaries, names and codes of census divisions and economic regions and, also the statistical area classification by census subdivision. For information on ordering individual map sheets, see *Census Division and Census Subdivision Reference Maps* in this catalogue.

| Catalogue no. | Medium   | Language  | Price | Release date    |
|---------------|----------|-----------|-------|-----------------|
| 12-572-XWE    | Internet | English   | Free  | 18 October 2006 |
| 12-572-XWF    | Internet | French    | Free  | 18 October 2006 |
| 12-572-XPB    | Print    | Bilingual | \$135 | 16 January 2007 |



## 2. Geographic data products

Geographic data products are those that contain 2006 Census Population and Dwelling counts.

### What's new?

- Population and dwelling counts for all standard geographic areas are available free on the Internet beginning March 13, 2007 through GeoSearch2006 and the Population and Dwelling Highlights tables.
- The GeoSuite CD-ROM includes the "2001 Dissemination Area to 2006 Dissemination Area and 2001 Dissemination Block to 2006 Dissemination Block correspondence lists" as separate flat ASCII files.
- GeoSearch2006 displays population and dwelling counts for selected places. For the first time GeoSearch2006 will serve as a point of entry for the community profiles.
- Geographic Attribute File is once again available for the 2006 Census. It was not disseminated since 1991.

## Population and dwelling counts, 2006 Census

These tables provide population and dwelling counts established by the 2006 Census of Canada. The levels of geography covered are Canada, provinces and territories, and other geographic areas including census subdivisions (municipalities), census metropolitan areas and census agglomerations. For selected geographies, the tables provide percentage change in the population counts between 2001 and 2006. Data are also provided for land area and population density. Geographic boundaries are those in effect on January 1, 2006.

A few options are available for accessing these tables:

- Free on the Internet under the census module beginning on March 13, 2007.
- The National Overview print publication available June 28, 2007.

| Catalogue no.     | Title  | Medium   | Language  | Price | Release date  |
|-------------------|--|----------|-----------|-------|---------------|
| 97-550-XWE2006002 | Population and dwelling count highlight tables | Internet | English   | Free  | 13 March 2007 |
| 97-550-XWF2006002 | Population and dwelling count highlight tables | Internet | French    | Free  | 13 March 2007 |
| 92-200-XPB        | A National Overview                            | Print    | Bilingual | \$40  | 28 June 2007  |

## GeoSuite

GeoSuite is a tool for data retrieval, query and tabular output, with software and data on a CD-ROM. GeoSuite allows users to explore the links between all standard levels of geography and to determine geographic codes, names, and population and dwelling counts. GeoSuite includes a dissemination area reference map listing that facilitates identification of appropriate dissemination area reference maps.

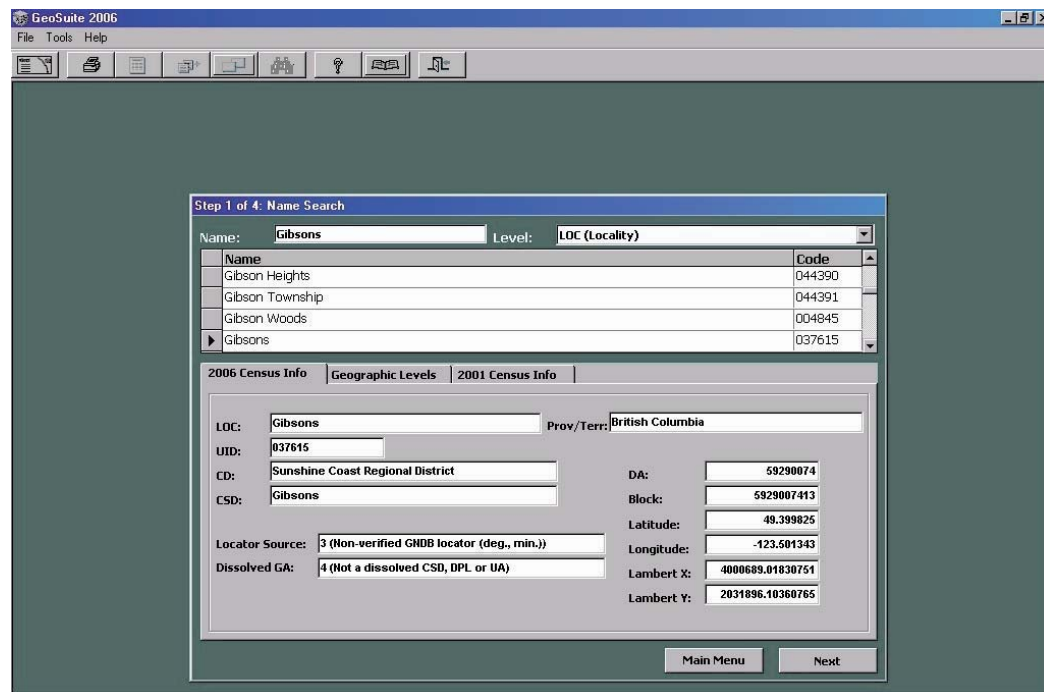
**Note:** The GeoSuite CD-ROM includes the 2001 Dissemination Area to 2006 Dissemination Area and 2001 Dissemination Block to 2006 Dissemination Block correspondence lists as separate flat ASCII files. The GeoSuite CD-ROM also includes the Reference Guide as a PDF file or RTF. The Reference Guide describes the content and provides explanations of the various functions of the product, as well as installation instructions and other information.

### Computer requirements:

- IBM-compatible microcomputer with a Pentium Class processor
- 32 Mb RAM required, 64 Mb RAM recommended
- Hard disk with 20 Mb for the application only; 150 Mb for full installation, including data
- SVGA monitor and graphics card (800 x 600, 256 colours, or better)
- CD-ROM drive
- Mouse or compatible pointing device

| Catalogue no. | Medium                | Language  | Price | Release date  |
|---------------|-----------------------|-----------|-------|---------------|
| 92-150-XCB    | CD-ROM                | Bilingual | \$65  | 13 March 2007 |
| 92-150-XBB    | Downloadable database | Bilingual | \$65  | 13 March 2007 |

Figure 2.1 View of GeoSuite 2006, step 1: name search



## Geographic Attribute File

The Geographic Attribute File is an ASCII file that assigns to each 2006 Census Dissemination Block (the basic geographical unit of dissemination) all higher geographic levels of codes, names and types. Also included for each dissemination block are the 2006 population and private dwelling counts.

| Catalogue no. | Medium                | Language  | Price | Release date  |
|---------------|-----------------------|-----------|-------|---------------|
| 92-151-XCB    | CD-ROM                | Bilingual | \$65  | 13 March 2007 |
| 92-151-XBB    | Downloadable database | Bilingual | \$65  | 13 March 2007 |

## Correspondence Files

Two correspondence files are available. The Dissemination Area correspondence file is a tabular product that describes the relationship between the 2006 Dissemination Area and the 2001 Dissemination Area, while the Dissemination Block correspondence file describes the relationship between the 2006 Dissemination Block and the 2001 Dissemination Block. Each file contains a unique identifier for the current census geographic area and the corresponding unique identifier for the previous census geographic area. In addition, a relationship flag is included which indicates the degree of correspondence between the geographic areas, facilitating the comparison between census years.

A reference guide is available for the 2006 Correspondence Files (92-156-GIE, GWE).

| Catalogue no. | Medium                | Language  | Price | Release date     |
|---------------|-----------------------|-----------|-------|------------------|
| 92-156-XBB    | Downloadable database | Bilingual | Free  | 14 February 2007 |

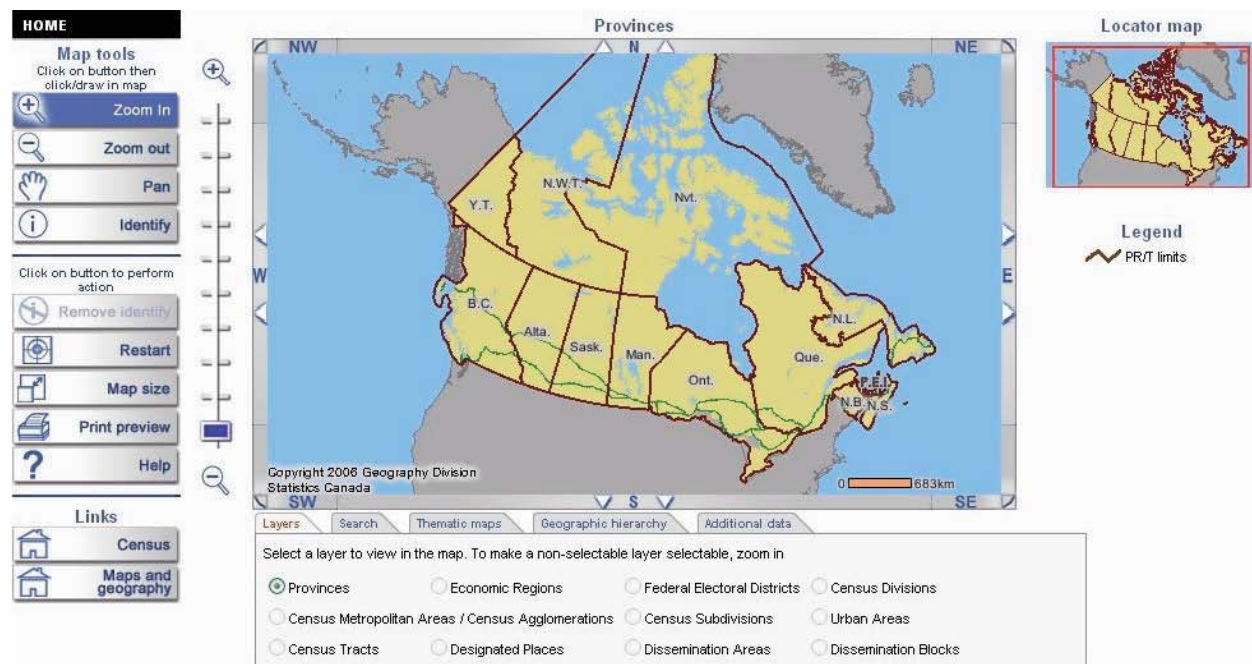
## GeoSearch2006

Redesigned for 2006, this interactive mapping application makes it easy to find many places in Canada, see them on a map, and get basic geographic and demographic data for those places. To find a specific place of interest, users can click and zoom in on a map of Canada or they can search by place name, street name, street intersection or postal code. GeoSearch2006 will display the appropriate map showing boundaries and other features. GeoSearch2006 automatically displays population and dwelling counts for the selected places, and shows what kind of geographic area it is and its relationship to other geographic areas.

New functionality for 2006 includes links to 2006 Census reference maps and community profile tables, and a thematic mapping option for selected census topics (for selected levels of geography).

| Catalogue no. | Medium   | Language | Price | Release date  |
|---------------|----------|----------|-------|---------------|
| 92-197-XWE    | Internet | English  | Free  | 13 March 2007 |
| 92-197-XWF    | Internet | French   | Free  | 13 March 2007 |

Figure 2.2 View of GeoSearch2006 on the Statistics Canada website



### 3. Spatial information products

Spatial information provides the shape and location of geographic features. The boundaries, road network and other features of standard geographic areas are available in digital form for mapping and geographic information system applications. These products include Digital Boundary Files, Cartographic Boundary Files, Road Network Files and Road Network Geographic Attribute Files.

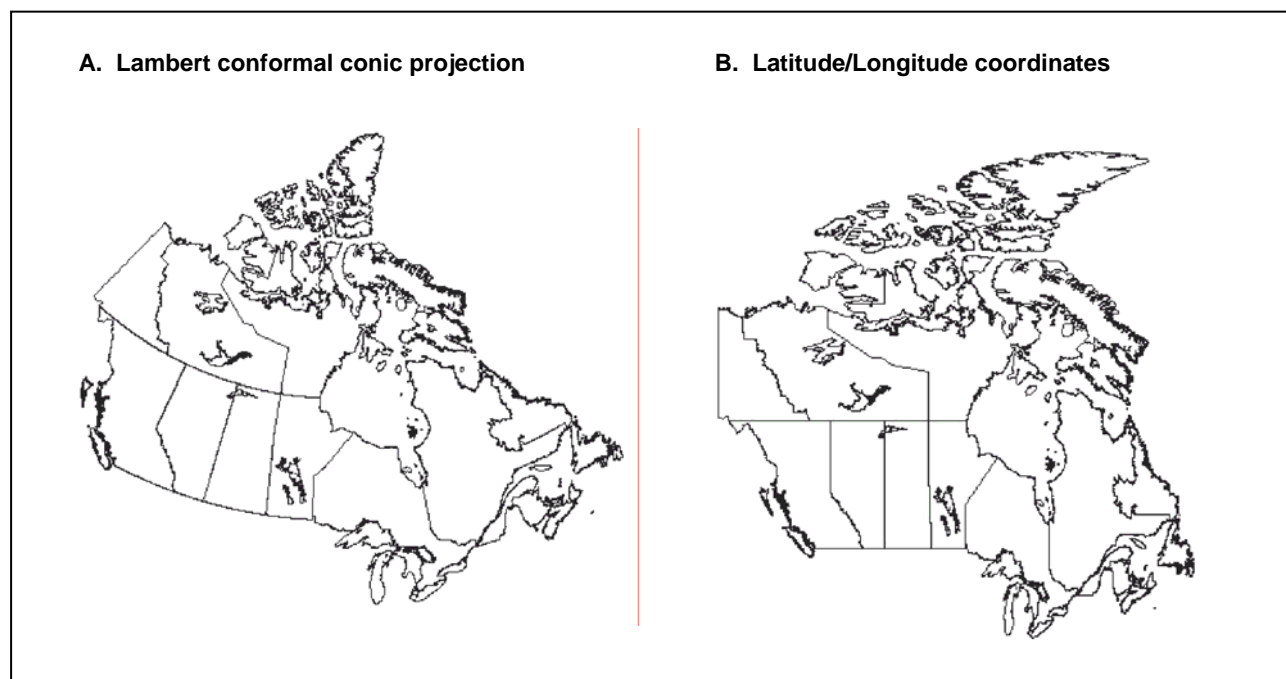
#### What's new?

- Digital Boundary Files are once again available.
- Digital and Cartographic Boundary Files for Provinces/Territories, Census Divisions, Census Consolidated Subdivisions, Census Subdivisions, Economic Regions and Census Metropolitan Areas and Census Agglomerations are available free of charge, downloadable on the internet from the Statistics Canada website.
- The Road Network File is available on an annual basis, free of charge, downloadable on the internet from the Statistics Canada website.
- The Road Network Geographic Attribute File covers all of Canada. Roads are assigned a rank according to four levels of detail. Roads arcs also include geographic attribute information such as left-side and right-side province and territory, census subdivision, census metropolitan area and census agglomeration and census tract names and codes.
- Boundary Files and Road Network Files are now available in Geography Markup Language (GML).
- Spatial Information Products can be purchased through e-commerce on the Statistics Canada internet website at [www12.statcan.ca/english/census06/geo/index.cfm](http://www12.statcan.ca/english/census06/geo/index.cfm).

Spatial data quality elements provide information on the fitness-for-use of a spatial database by describing why, when and how the data are created, and the accuracy of the data. The elements include an overview describing the purpose and usage, as well as specific quality elements reporting on the lineage, positional accuracy, attribute accuracy, logical consistency and completeness. This information is provided to users for all spatial data products disseminated for the census.

**Note:** Although the spatial information products are disseminated in latitude/longitude coordinates (as a convenient way of transferring geographic data), maps should not be generated using these spherical coordinates as they are unprojected, resulting in a map that is distorted (see Figure 3.1). Users can convert the latitude/longitude coordinates to the desired map projection(s) using their geographic information system software. Users should also be aware that different spatial datasets can be in the same coordinate system or projection but not in the same datum, in which case the data will not be spatially coincident. Data overlay discrepancies will occur if spatial data from the 2006 Census, which are based on NAD83, are overlaid with users' data that are based on NAD27.

**Figure 3.1 Example of a map projection and unprojected coordinates**



## Boundary Files, 2006 Census

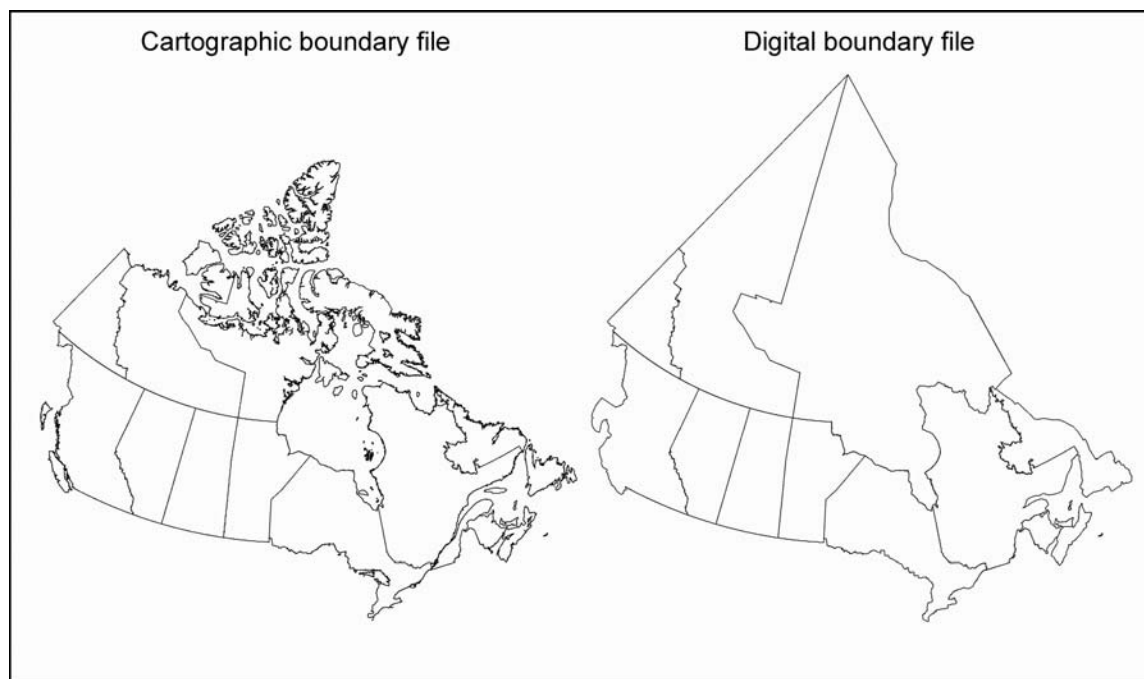
There are two types of boundary files: digital and cartographic. Digital files depict the full extent of the geographical areas, including the coastal water area. Cartographic files depict the geographical areas using only the major land mass of Canada and its coastal islands. Figure 3.2 shows an example of Digital and Cartographic Boundary Files. The files provide a framework for mapping and spatial analysis using commercially available geographic information systems or other mapping software. They are positionally consistent with the 2006 Road Network File and 2006 Road Network and Geography Attribute File, which can provide additional geographic context for mapping applications.

A reference guide is available (92-160-GIE, GWE).

**Coordinates:** Latitude/longitude and are based on the North American Datum of 1983 (NAD83).

**Format:** ArcInfo® (.SHP), Geography Markup Language (.GML), and MapInfo® (.TAB). (software not included).

**Figure 3.2 Example of cartographic and digital boundary files (provinces and territories), 2006 Census**



**Note:** The Geography Markup Language (GML) is an XML encoding for the modelling, transport and storage of geographic information including both the spatial and non-spatial properties of geographic features. This specification defines the XML Schema syntax, mechanisms, and conventions that:

- Provide an open, vendor-neutral framework for the definition of geospatial application schemas and objects;
- Allow profiles that support proper subsets of GML framework descriptive capabilities;
- Support the description of geospatial application schemas for specialized domains and information communities;
- Enable the creation and maintenance of linked geographic application schemas and datasets;
- Support the storage and transport of application schemas and datasets;
- Increase the ability of organizations to share geographic application schemas and the information they describe.

**Price note:** Prices and catalogue numbers vary by type of geographic boundary. Custom orders are available on request. Contact us through the National inquiries line at 1-800-263-1136, by email at [infostats@statcan.ca](mailto:infostats@statcan.ca) or visit our website at [www.statcan.ca](http://www.statcan.ca).

## Province and Territory Boundary Files

The Province and Territory Boundary Files portray the boundaries of the 10 provinces and three territories that make up Canada. Provinces and territories are the major political units of Canada. The Province and Territory Boundary Files are available as a standard package for Canada.

| Type of file               | Catalogue no. | Medium   | Language | Price | Release date    |
|----------------------------|---------------|----------|----------|-------|-----------------|
| Digital Boundary File      | 92-160-XWE    | Internet | English  | Free  | 18 October 2006 |
| Digital Boundary File      | 92-160-XWF    | Internet | French   | Free  | 18 October 2006 |
| Cartographic Boundary File | 92-160-XWE    | Internet | English  | Free  | 18 October 2006 |
| Cartographic Boundary File | 92-160-XWF    | Internet | French   | Free  | 18 October 2006 |

## Census Division Boundary Files

The Census Division Boundary Files portray the census division boundaries for which 2006 Census data are disseminated. A census division is a unit of regional government (such as a county or regional district) or an area treated as equivalent for statistical purposes. A census division is usually made up of a number of adjacent municipalities. The files contain the boundaries of all 288 census divisions which combined cover all of Canada. The Census Division Boundary Files are available as a standard package for Canada.

| Type of file               | Catalogue no. | Medium   | Language | Price | Release date    |
|----------------------------|---------------|----------|----------|-------|-----------------|
| Digital Boundary File      | 92-160-XWE    | Internet | English  | Free  | 18 October 2006 |
| Digital Boundary File      | 92-160-XWF    | Internet | French   | Free  | 18 October 2006 |
| Cartographic Boundary File | 92-160-XWE    | Internet | English  | Free  | 18 October 2006 |
| Cartographic Boundary File | 92-160-XWF    | Internet | French   | Free  | 18 October 2006 |

## Census Consolidated Subdivision Boundary Files

The Census Consolidated Subdivision Boundary Files portray the census consolidated subdivision boundaries for which 2006 Census data are disseminated. A census consolidated subdivision is a grouping of adjacent census subdivisions (municipalities) used primarily for disseminating Census of Agriculture data. The files contain the boundaries of all 2,341 census consolidated subdivisions which combined cover all of Canada. The Census Consolidated Subdivision Boundary Files are available as a standard package for Canada.

| Type of file               | Catalogue no. | Medium   | Language | Price | Release date    |
|----------------------------|---------------|----------|----------|-------|-----------------|
| Digital Boundary File      | 92-160-XWE    | Internet | English  | Free  | 18 October 2006 |
| Digital Boundary File      | 92-160-XWF    | Internet | French   | Free  | 18 October 2006 |
| Cartographic Boundary File | 92-160-XWE    | Internet | English  | Free  | 18 October 2006 |
| Cartographic Boundary File | 92-160-XWF    | Internet | French   | Free  | 18 October 2006 |



## Census Subdivision Boundary Files

The Census Subdivision Boundary Files portray the census subdivision boundaries for which 2006 Census data are disseminated. A census subdivision is a municipality or an area treated as equivalent to a municipality for statistical purposes (for example, Indian reserves and unorganized territories). The files contain the boundaries of all 5,418 census subdivisions which combined cover all of Canada. The Census Subdivision Boundary Files are available as a standard package for Canada.

| Type of file               | Catalogue no. | Medium   | Language | Price | Release date    |
|----------------------------|---------------|----------|----------|-------|-----------------|
| Digital Boundary File      | 92-160-XWE    | Internet | English  | Free  | 18 October 2006 |
| Digital Boundary File      | 92-160-XWF    | Internet | French   | Free  | 18 October 2006 |
| Cartographic Boundary File | 92-160-XWE    | Internet | English  | Free  | 18 October 2006 |
| Cartographic Boundary File | 92-160-XWF    | Internet | French   | Free  | 18 October 2006 |

## Economic Region Boundary Files

The Economic Region Boundary Files portray the economic region boundaries for which 2006 Census data are disseminated. An economic region is a grouping of complete census divisions (with one exception in Ontario) created as a standard geographic unit for analysis of regional economic activity. The files contain the boundaries of all 76 economic regions which combined cover all of Canada. The Economic Region Boundary Files are available as a standard package for Canada.

| Type of file               | Catalogue no. | Medium   | Language | Price | Release date    |
|----------------------------|---------------|----------|----------|-------|-----------------|
| Digital Boundary File      | 92-160-XWE    | Internet | English  | Free  | 18 October 2006 |
| Digital Boundary File      | 92-160-XWF    | Internet | French   | Free  | 18 October 2006 |
| Cartographic Boundary File | 92-160-XWE    | Internet | English  | Free  | 18 October 2006 |
| Cartographic Boundary File | 92-160-XWF    | Internet | French   | Free  | 18 October 2006 |

## Census Metropolitan Area and Census Agglomeration Boundary Files

The Census Metropolitan Area and Census Agglomeration Boundary Files portray the boundaries of the 33 census metropolitan areas and 111 census agglomerations for which 2006 Census data are disseminated. Census metropolitan areas and census agglomerations consist of one or more adjacent municipalities (census subdivisions) around an urban core. To form a census metropolitan area, the urban core must have a population of at least 50,000 and the entire census metropolitan area must have a total population of at least 100,000. To form a census agglomeration, the urban core must have a population of at least 10,000. The files contain the boundaries of all 144 census metropolitan areas and census agglomerations defined for the 2006 Census. The Census Metropolitan Area and Census Agglomeration Boundary Files are available as a standard package for Canada.

| Type of file               | Catalogue no. | Medium   | Language | Price | Release date    |
|----------------------------|---------------|----------|----------|-------|-----------------|
| Digital Boundary File      | 92-160-XWE    | Internet | English  | Free  | 18 October 2006 |
| Digital Boundary File      | 92-160-XWF    | Internet | French   | Free  | 18 October 2006 |
| Cartographic Boundary File | 92-160-XWE    | Internet | English  | Free  | 18 October 2006 |
| Cartographic Boundary File | 92-160-XWF    | Internet | French   | Free  | 18 October 2006 |

## Federal Electoral District Boundary Files (2003 Representation Order)

The Federal Electoral District Boundary Files portray the federal electoral district boundaries for which 2006 Census data are disseminated. A federal electoral district is an area represented by a Member of the House of Commons. The federal electoral district boundaries used for the 2006 Census are based on the 2003 Representation Order. The files contain the boundaries of all 308 federal electoral districts which combined cover all of Canada. The Federal Electoral District Boundary Files are available as a standard package for Canada.

| Type of boundary file      | Catalogue no. | Medium   | Language | Price | Release date     |
|----------------------------|---------------|----------|----------|-------|------------------|
| Digital Boundary File      | 92-171-XWE    | Internet | English  | \$110 | 14 February 2007 |
| Digital Boundary File      | 92-171-XWF    | Internet | French   | \$110 | 14 February 2007 |
| Cartographic Boundary File | 92-171-XWE    | Internet | English  | \$110 | 14 February 2007 |
| Cartographic Boundary File | 92-171-XWF    | Internet | French   | \$110 | 14 February 2007 |
| Digital Boundary File      | 92-171-XCE    | CD-ROM   | English  | \$110 | 14 February 2007 |
| Digital Boundary File      | 92-171-XCF    | CD-ROM   | French   | \$110 | 14 February 2007 |
| Cartographic Boundary File | 92-171-XCE    | CD-ROM   | English  | \$110 | 14 February 2007 |
| Cartographic Boundary File | 92-171-XCF    | CD-ROM   | French   | \$110 | 14 February 2007 |

## Census Tract Boundary Files

The Census Tract Boundary Files portray the census tract boundaries for which 2006 Census data are disseminated. Census tracts are small, relatively stable geographic areas that usually have a population of 2,500 to 8,000. They are located in census metropolitan areas and in census agglomerations with an urban core population of 50,000 or more in the previous census. The files contain the boundaries of all 5,076 census tracts located within the 33 census metropolitan areas and 15 census agglomerations for which census tracts are delineated. The Census Tract Boundary Files are available as a standard package for Canada.

| Type of boundary file      | Catalogue no. | Medium   | Language | Price   | Release date     |
|----------------------------|---------------|----------|----------|---------|------------------|
| Digital Boundary File      | 92-168-XWE    | Internet | English  | \$1,000 | 14 February 2007 |
| Digital Boundary File      | 92-168-XWF    | Internet | French   | \$1,000 | 14 February 2007 |
| Cartographic Boundary File | 92-168-XWE    | Internet | English  | \$1,000 | 14 February 2007 |
| Cartographic Boundary File | 92-168-XWF    | Internet | French   | \$1,000 | 14 February 2007 |
| Digital Boundary File      | 92-168-XCE    | CD-ROM   | English  | \$1,000 | 14 February 2007 |
| Digital Boundary File      | 92-168-XCF    | CD-ROM   | French   | \$1,000 | 14 February 2007 |
| Cartographic Boundary File | 92-168-XCE    | CD-ROM   | English  | \$1,000 | 14 February 2007 |
| Cartographic Boundary File | 92-168-XCF    | CD-ROM   | French   | \$1,000 | 14 February 2007 |

## Designated Place Boundary Files

The Designated Place Boundary Files portray the designated place boundaries for which 2006 Census data are disseminated. A designated place is normally a small community or settlement that does not meet the criteria established by Statistics Canada to be a census subdivision (an area with municipal status) or an urban area. Designated places are created by provinces and territories, in cooperation with Statistics Canada, to provide data for sub-municipal areas. The files contain the boundaries of all 1,289 designated places defined for the 2006 Census.

| Type of file               | Catalogue no. | Medium   | Language | Price | Release date  |
|----------------------------|---------------|----------|----------|-------|---------------|
| Digital Boundary File      | 92-165-XWE    | Internet | English  | \$110 | 13 March 2007 |
| Digital Boundary File      | 92-165-XWF    | Internet | French   | \$110 | 13 March 2007 |
| Cartographic Boundary File | 92-165-XWE    | Internet | English  | \$110 | 13 March 2007 |
| Cartographic Boundary File | 92-165-XWF    | Internet | French   | \$110 | 13 March 2007 |
| Digital Boundary File      | 92-165-XCE    | CD-ROM   | English  | \$110 | 13 March 2007 |
| Digital Boundary File      | 92-165-XCF    | CD-ROM   | French   | \$110 | 13 March 2007 |
| Cartographic Boundary File | 92-165-XCE    | CD-ROM   | English  | \$110 | 13 March 2007 |
| Cartographic Boundary File | 92-165-XCF    | CD-ROM   | French   | \$110 | 13 March 2007 |

## Urban Area Boundary Files

The Urban Areas Boundary Files portray the urban area boundaries for which 2006 Census data are disseminated. An urban area has a minimum population concentration of 1,000 persons and a population density of at least 400 persons per square kilometre, based on the current census population count. The files contain the boundaries of all 895 urban areas defined for the 2006 Census. The Urban Area Boundary Files are available as a standard package for Canada.

| Type of file               | Catalogue no. | Medium   | Language | Price | Release date  |
|----------------------------|---------------|----------|----------|-------|---------------|
| Digital Boundary File      | 92-164-XWE    | Internet | English  | \$110 | 13 March 2007 |
| Digital Boundary File      | 92-164-XWF    | Internet | French   | \$110 | 13 March 2007 |
| Cartographic Boundary File | 92-164-XWE    | Internet | English  | \$110 | 13 March 2007 |
| Cartographic Boundary File | 92-164-XWF    | Internet | French   | \$110 | 13 March 2007 |
| Digital Boundary File      | 92-164-XCE    | CD-ROM   | English  | \$110 | 13 March 2007 |
| Digital Boundary File      | 92-164-XCF    | CD-ROM   | French   | \$110 | 13 March 2007 |
| Cartographic Boundary File | 92-164-XCE    | CD-ROM   | English  | \$110 | 13 March 2007 |
| Cartographic Boundary File | 92-164-XCF    | CD-ROM   | French   | \$110 | 13 March 2007 |

## Dissemination Area Boundary Files

The Dissemination Area Boundary Files portray the dissemination area boundaries for which 2006 Census data are disseminated. A dissemination area is a small area composed of one or more neighbouring blocks and is the smallest standard geographic area for which all census data are disseminated. The files contain the boundaries of all 54,626 dissemination areas which combined cover all of Canada. The Dissemination Area Boundary Files are available as a standard package for Canada.

| Type of file               | Catalogue no. | Medium   | Language | Price            | Release date     |
|----------------------------|---------------|----------|----------|------------------|------------------|
| Digital Boundary File      | 92-169-XWE    | Internet | English  | \$110 - \$10,900 | 14 February 2007 |
| Digital Boundary File      | 92-169-XWF    | Internet | French   | \$110 - \$10,900 | 14 February 2007 |
| Cartographic Boundary File | 92-169-XWE    | Internet | English  | \$110 - \$10,900 | 14 February 2007 |
| Cartographic Boundary File | 92-169-XWF    | Internet | French   | \$110 - \$10,900 | 14 February 2007 |
| Digital Boundary File      | 92-169-XCE    | CD-ROM   | English  | \$110 - \$10,900 | 14 February 2007 |
| Digital Boundary File      | 92-169-XCF    | CD-ROM   | French   | \$110 - \$10,900 | 14 February 2007 |
| Cartographic Boundary File | 92-169-XCE    | CD-ROM   | English  | \$110 - \$10,900 | 14 February 2007 |
| Cartographic Boundary File | 92-169-XCF    | CD-ROM   | French   | \$110 - \$10,900 | 14 February 2007 |

**Table 3.1 Prices for dissemination area boundary files available for Canada, provinces and territories**

| Coverage                  | Prices for dissemination area boundary files | Catalogue no.     |
|---------------------------|--|-------------------|
| Canada                    | \$10,900                                     | 92-169-XCE2006001 |
| Newfoundland and Labrador | \$335  | 92-169-XCE2006002 |
| Prince Edward Island      | \$110  | 92-169-XCE2006003 |
| Nova Scotia               | \$335  | 92-169-XCE2006004 |
| New Brunswick             | \$335  | 92-169-XCE2006005 |
| Quebec                    | \$2,565                                      | 92-169-XCE2006006 |
| Ontario                   | \$3,900                                      | 92-169-XCE2006007 |
| Manitoba                  | \$555  | 92-169-XCE2006008 |
| Saskatchewan              | \$665  | 92-169-XCE2006009 |
| Alberta                   | \$1,170                                      | 92-169-XCE2006010 |
| British Columbia          | \$1,615                                      | 92-169-XCE2006011 |
| Yukon Territory           | \$110  | 92-169-XCE2006012 |
| Northwest Territories     | \$110  | 92-169-XCE2006013 |
| Nunavut                   | \$110  | 92-169-XCE2006014 |

## Dissemination Block Boundary Files

The Dissemination Block Boundary Files portray the dissemination block boundaries for which 2006 Census data are disseminated. A dissemination block is an area bounded on all sides by roads and/or boundaries of standard geographic areas and is the smallest geographic area for which population and dwelling count data are disseminated. The files contain the boundaries of all 478,831 dissemination blocks which combined cover all of Canada. The Dissemination Block Boundary Files are available as a standard package for Canada.

| Type of file               | Catalogue no. | Medium   | Language | Price            | Release date     |
|----------------------------|---------------|----------|----------|------------------|------------------|
| Digital Boundary File      | 92-163-XWE    | Internet | English  | \$120 - \$12,000 | 14 February 2007 |
| Digital Boundary File      | 92-163-XWF    | Internet | French   | \$120 - \$12,000 | 14 February 2007 |
| Cartographic Boundary File | 92-163-XWE    | Internet | English  | \$120 - \$12,000 | 14 February 2007 |
| Cartographic Boundary File | 92-163-XWF    | Internet | French   | \$120 - \$12,000 | 14 February 2007 |
| Digital Boundary File      | 92-163-XCE    | CD-ROM   | English  | \$120 - \$12,000 | 14 February 2007 |
| Digital Boundary File      | 92-163-XCF    | CD-ROM   | French   | \$120 - \$12,000 | 14 February 2007 |
| Cartographic Boundary File | 92-163-XCE    | CD-ROM   | English  | \$120 - \$12,000 | 14 February 2007 |
| Cartographic Boundary File | 92-163-XCF    | CD-ROM   | French   | \$120 - \$12,000 | 14 February 2007 |

**Table 3.2 Prices for dissemination block boundary files available for Canada, provinces and territories**

| Coverage                  | Price of dissemination block boundary files | Catalogue no.     |
|---------------------------|---|-------------------|
| Canada                    | \$12,000                                    | 92-163-XCE2006001 |
| Newfoundland and Labrador | \$365                                       | 92-163-XCE2006002 |
| Prince Edward Island      | \$120                                       | 92-163-XCE2006003 |
| Nova Scotia               | \$365                                       | 92-163-XCE2006004 |
| New Brunswick             | \$365                                       | 92-163-XCE2006005 |
| Quebec                    | \$2,820                                     | 92-163-XCE2006006 |
| Ontario                   | \$4,290                                     | 92-163-XCE2006007 |
| Manitoba                  | \$610                                       | 92-163-XCE2006008 |
| Saskatchewan              | \$735                                       | 92-163-XCE2006009 |
| Alberta                   | \$1,285                                     | 92-163-XCE2006010 |
| British Columbia          | \$1,775                                     | 92-163-XCE2006011 |
| Yukon Territory           | \$120                                       | 92-163-XCE2006012 |
| Northwest Territories     | \$120                                       | 92-163-XCE2006013 |
| Nunavut                   | \$110                                       | 92-163-XCE2006014 |

## Forward Sortation Areas Boundary File

**Note:** Postal code products for the 2006 Census are currently under review. The planned release for these products is in the Fall of 2007.

The 2006 Census Forward Sortation Areas Boundary Files are available as a standard package for Canada. They depict forward sortation area boundaries used for 2006 Census dissemination, which are derived from postal codes captured from the 2006 Census questionnaires. Through analysis of the postal codes reported by census households, a single forward sortation area is assigned to each dissemination block (most often the forward sortation area reported by the largest number of census households). Forward sortation area polygons are formed by grouping dissemination blocks. Therefore, the census-based forward sortation area boundaries are not equivalent to forward sortation area boundaries in use by Canada Post, but are representations created from dissemination blocks.

| Type of file               | Catalogue no. | Medium   | Language | Price | Release date |
|----------------------------|---------------|----------|----------|-------|--------------|
| Digital Boundary File      | 92-170- XWE   | Internet | English  | \$445 | Fall 2007    |
| Digital Boundary File      | 92-170- XWF   | Internet | French   | \$445 | Fall 2007    |
| Cartographic Boundary File | 92-170-XWE    | Internet | English  | \$445 | Fall 2007    |
| Cartographic Boundary File | 92-170- XWF   | Internet | French   | \$445 | Fall 2007    |
| Digital Boundary File      | 92-170- XCE   | CD-ROM   | English  | \$445 | Fall 2007    |
| Digital Boundary File      | 92-170- XCF   | CD-ROM   | French   | \$445 | Fall 2007    |
| Cartographic Boundary File | 92-170-XCE    | CD-ROM   | English  | \$445 | Fall 2007    |
| Cartographic Boundary File | 92-170-XCF    | CD-ROM   | French   | \$445 | Fall 2007    |

## Population Ecumene Census Division Cartographic Boundary File

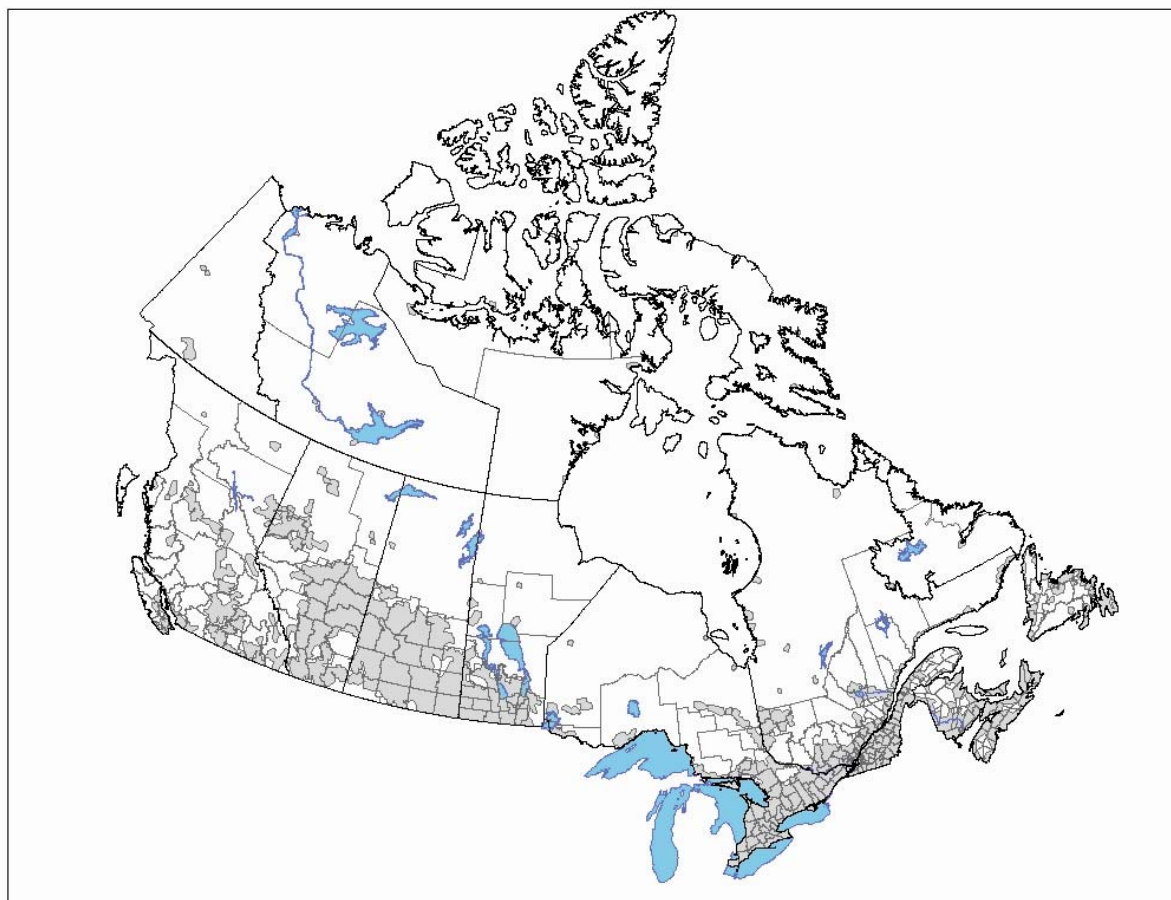
This file contains a generalised population ecumene based on census population density data with at least one ecumene polygon for every census division. It can be used to produce small-scale thematic maps of statistical data.

A reference guide is available for the Population Ecumene Census Division Cartographic Boundary File (92-159-GWE)

**Coordinates:** Latitude/longitude (NAD83).

**Format:** ArcInfo® (.SHP), Geography Markup Language (.GML) and MapInfo® (.TAB).

| Catalogue no. | Medium   | Language | Price | Release date  |
|---------------|----------|----------|-------|---------------|
| 92-159-XWE    | Internet | English  | free  | 13 March 2007 |
| 92-159-XWF    | Internet | French   | free  | 13 March 2007 |

**Figure 3.3 Population ecumene census division boundary file, 2006 Census**

## Road Network File

The 2006 Road Network File is a digital representation of Canada's national road network, containing information such as street names, type, direction and address ranges. This unrestricted-use file is available as a free download.

User applications of this file may include mapping, geocoding, geographic searching, area delineation, and database maintenance as a source for street names and locations. Since statistical activities do not require absolute positional accuracy, relative positional accuracy takes precedence in the Road Network File. As a result, this file is not suitable for engineering applications, emergency dispatching services, surveying or legal applications.

A reference guide is included (92-500-GWE)

**Coordinates:** Latitude/Longitude (NAD83)

**Format:** ArcInfo® (.SHP), Geography Markup Language (.GML) and MapInfo® (.TAB).



| Catalogue no.     | Medium   | Language | Price | Release date      |
|-------------------|----------|----------|-------|-------------------|
| 92-500-XWE2005001 | Internet | English  | Free  | 29 September 2005 |
| 92-500-XWF2005001 | Internet | French   | Free  | 29 September 2005 |
| 92-500-XWE2006001 | Internet | English  | Free  | 29 September 2006 |
| 92-500-XWF2006001 | Internet | French   | Free  | 29 September 2006 |

## Road Network and Geographic Attribute File

The Road Network and Geographic Attribute File is a digital representation of Canada's national road network, containing information such as street name, type, direction, address range and road rank. Address ranges are largely dwelling-based and occur mainly in urban centres of Canada. Also included on each side of every road arc are identification names and codes for the following levels of geography:

- province/territory,
- census subdivision,
- census metropolitan area,
- census agglomeration and
- census tract.

Roads are ranked according to four levels of detail, suitable for mapping at small to medium scales. The Road Network and Geographic Attribute File provides cartographic reference features in the production of thematic maps using the 2006 Census Boundary Files. The positional accuracy of the Road Network and Geographic Attribute File does not support cadastral, surveying, digitizing or engineering applications.

The Road Network and Geographic Attribute File is in latitude/longitude coordinates based upon the North American Datum of 1983 (NAD83). A reference guide is available (92-155-GIE, GWE).

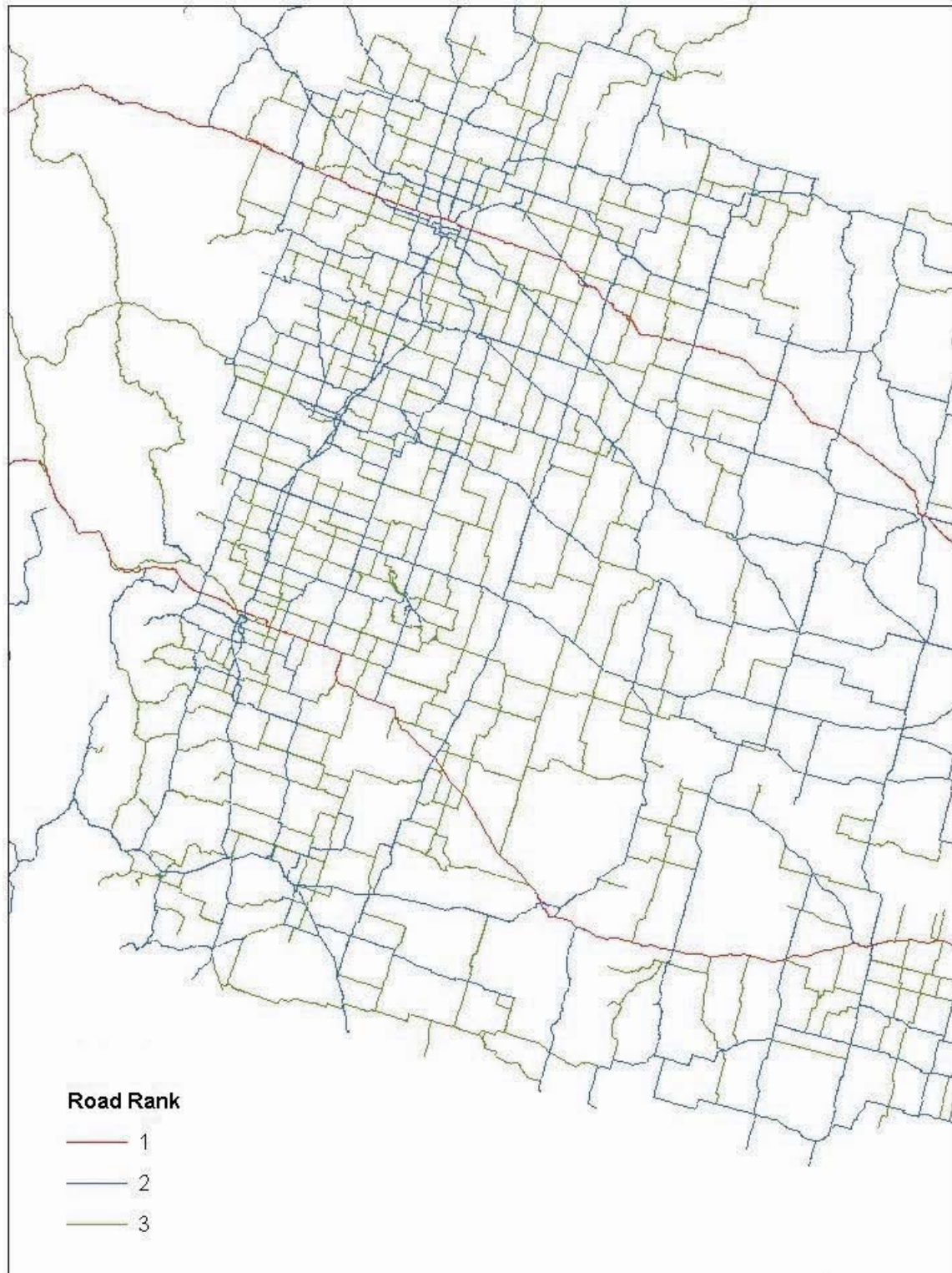
**Coordinates:** Latitude/Longitude (NAD83).

**Format:** ArcInfo® (.SHP), Geography Markup Language (.GML) and MapInfo® (.TAB). (software not included)

| Catalogue no. | Medium   | Language | Price    | Release date  |
|---------------|----------|----------|----------|---------------|
| 92-155-XWE    | Internet | English  | \$ 2,500 | 13 March 2007 |
| 92-155-XWF    | Internet | French   | \$ 2,500 | 13 March 2007 |
| 92-155-XCE    | CD-ROM   | English  | \$ 2,500 | 13 March 2007 |
| 92-155-XCF    | CD-ROM   | French   | \$ 2,500 | 13 March 2007 |



**Figure 3.4 Part of road network and geographic attribute file, showing southern Alberta road ranks 1, 2 and 3 only**



**Table 3.3 Prices for road network and geographic attribute files available for Canada, provinces and territories**

| <b>Region</b>             | <b>Prices for road network and geographic attribute files</b> | <b>Catalogue no.</b> |
|---------------------------|---|----------------------|
| Canada                    | \$2,500   | 92-155-XWE2006001    |
| Newfoundland and Labrador | \$110   | 92-155-XWE2006002    |
| Prince Edward Island      | \$110   | 92-155-XWE2006003    |
| Nova Scotia               | \$125   | 92-155-XWE2006004    |
| New Brunswick             | \$125   | 92-155-XWE2006005    |
| Québec                    | \$500   | 92-155-XWE2006006    |
| Ontario                   | \$670   | 92-155-XWE2006007    |
| Manitoba                  | \$165   | 92-155-XWE2006008    |
| Saskatchewan              | \$165   | 92-155-XWE2006009    |
| Alberta                   | \$290   | 92-155-XWE2006010    |
| British Columbia          | \$290   | 92-155-XWE2006011    |
| Yukon                     | \$110   | 92-155-XWE2006012    |
| Northwest Territories     | \$110   | 92-155-XWE2006013    |
| Nunavut                   | \$110   | 92-155-XWE2006014    |

## 4. Attribute information products

Attribute information products include the Postal Code Conversion File and the Postal Code by Federal Ridings File.

### What's new?

- Postal code products for the 2006 Census are currently under review. The planned release for these products is in the **third quarter of 2007**. Until that time, postal code products containing 2001 Census data will continue to be available; refer to the 2001 Geography Catalogue for details (92-405-XIE, XWE).
- Postal Code Conversion File will have new metadata associated with each record.
- A Postal Code working paper is now available (see Table 1.6, catalogue no. 92F0138MWE2007001, 92F0138MIE2007001).
- Attribute Information Products can be purchased through e-commerce on the Statistics Canada website at [www12.statcan.ca/english/census06/geo/index.cfm](http://www12.statcan.ca/english/census06/geo/index.cfm).

### Postal Code Conversion File

The Postal Code Conversion File provides a link between the six-character postal code and standard 2006 Census geographic areas (such as dissemination areas, census subdivisions, census tracts). It also provides the X,Y (latitude/longitude) coordinates for a geographic area point representing the approximate location of the postal code to support mapping.

The Postal Code Conversion File is available as standard packages for Canada, the provinces and territories, census metropolitan areas and some census agglomerations. A reference guide is included.

**Coordinates:** Latitude/Longitude (NAD83)

**Format:** flat ASCII file

| Catalogue no. | Medium | Language  | Price    | Release date |
|---------------|--------|-----------|----------|--------------|
| 92-153-XCB    | CD-ROM | Bilingual | \$10,000 | Fall 2007    |

**Price notes:** The price for individual provinces or territories ranges from \$220 to \$3,955. The price for individual census metropolitan areas or census agglomerations ranges from \$220 to \$1,615. See Table 4.1 for details.

Clients who purchase the Postal Code Conversion File at the initial price may purchase updates at a reduced flat rate or a subscription rate. For details, see Postal Code Conversion File – Update (Catalogue no. 92-153-UCB).

## Postal Code Conversion File – Update

The Postal Code Conversion File is updated with new postal codes on a semi-annual basis. Clients must purchase the Postal Code Conversion File at the initial price; then subsequent updated files (92-153-UCB) may be purchased at the update or subscription rate. The update rate is a flat rate that in most cases is much lower than the initial purchase price. An additional 25% discount on updates is given to Postal Code Conversion File – Update subscribers. The subscription requires clients to pay in advance for at least one updated file per year until the Postal Code Conversion File reflecting the geography of the 2006 Census is released.

The Postal Code Conversion File – Updates are available as standard packages for Canada and the provinces and territories. A reference guide is included.

**Coordinates:** Latitude/Longitude (NAD83)

**Format:** flat ASCII file

| Catalogue no. | Medium | Language  | Single update price | Subscription update price | Release date |
|---------------|--------|-----------|---------------------|---------------------------|--------------|
| 92-153-UCB    | CD-ROM | Bilingual | \$TBD               | \$1,250                   | Fall 2007    |

**Price notes:** The single update price for individual provinces or territories ranges from \$110 to \$665. The subscription update price for individual provinces or territories ranges from \$80 to \$500. See Table 4.1 for details.

**Table 4.1 Summary of prices for 2006 Census postal code conversion file, postal code conversion file updates and postal code conversion file subscription rates**

| Region                              | Postal code conversion file (92-153-XCB, 92-153-XWB) | Postal code conversion file updates (92-153-UCB, 92-153-UWB) | Postal code conversion file subscription rates |
|-------------------------------------|--|--|--|
| Minimum                             | \$220  | \$110  | \$80   |
| <b>Canada</b>                       | \$10,000   | \$1,670  | \$1,250  |
| <b>Newfoundland and Labrador</b>    | \$220  | \$110  | \$80   |
| St. John's (CMA)                    | \$220  |  |  |
| <b>Prince Edward Island</b>         | \$220  | \$110  | \$80   |
| <b>Nova Scotia</b>                  | \$500  | \$110  | \$80   |
| Halifax (CMA)                       | \$220  |  |  |
| <b>New Brunswick</b>                | \$390  | \$110  | \$80   |
| Fredericton (CA)                    | \$220  |  |  |
| Moncton (CMA)                       | \$220  |  |  |
| Saint John (CMA)                    | \$220  |  |  |
| <b>Québec</b>                       | \$2,785  | \$445  | \$335  |
| Montréal (CMA)                      | \$1,445  |  |  |
| Québec (CMA)                        | \$555  |  |  |
| Saguenay (CMA)                      | \$220  |  |  |
| Saint-Jean-sur-Richelieu (CA)       | \$220  |  |  |
| Sherbrooke (CMA)                    | \$220  |  |  |
| Trois-Rivières (CMA)                | \$220  |  |  |
| <b>Ontario</b>                      | \$3,955  | \$665  | \$500  |
| Barrie (CMA)                        | \$220  |  |  |
| Belleville (CA)                     | \$220  |  |  |
| Brantford (CMA)                     | \$220  |  |  |
| Greater Sudbury/Grand Sudbury (CMA) | \$220  |  |  |
| Guelph (CMA)                        | \$220  |  |  |
| Hamilton (CMA)                      | \$445  |  |  |
| Kingston (CA)                       | \$220  |  |  |
| Kitchener (CMA)                     | \$275  |  |  |
| London (CMA)                        | \$275  |  |  |
| North Bay (CA)                      | \$220  |  |  |
| Oshawa (CMA)                        | \$220  |  |  |
| Ottawa – Gatineau (CMA)             | \$665  |  |  |
| Peterborough (CMA)                  | \$220  |  |  |
| Sarnia (CA)                         | \$220  |  |  |
| Sault Ste. Marie (CA)               | \$220  |  |  |
| St. Catharines – Niagara (CMA)      | \$335  |  |  |
| Stratford (CA)                      | \$220  |  |  |
| Thunder Bay (CMA)                   | \$220  |  |  |
| Toronto (CMA)                       | \$1,615  |  |  |

**Table 4.1 Summary of prices for 2006 Census postal code conversion file, postal code conversion file updates and postal code conversion file subscription rates**  
(continued)

| <b>Region</b>                | <b>Postal code conversion file<br/>(92-153-XCB,<br/>92-153-XWB)</b> | <b>Postal code conversion file updates<br/>(92-153-UCB,<br/>92-153-UWB)</b> | <b>Postal code conversion file subscription rates</b> |
|------------------------------|---|---|---|
| Windsor (CMA)                | \$220   |   |   |
| Woodstock (CA)               | \$220   |   |   |
| <b>Manitoba</b>              | \$555   | \$110   | \$80  |
| Winnipeg (CMA)               | \$445   |   |   |
| <b>Saskatchewan</b>          | \$555   | \$110   | \$80  |
| Regina (CMA)                 | \$220   |   |   |
| Saskatoon (CMA)              | \$220   |   |   |
| <b>Alberta</b>               | \$1,225   | \$220   | \$165   |
| Calgary (CMA)                | \$555   |   |   |
| Edmonton (CMA)               | \$610   |   |   |
| Lethbridge (CA)              | \$275   |   |   |
| Red Deer (CA)                | \$220   |   |   |
| <b>British Columbia</b>      | \$1,835   | \$305   | \$220   |
| Abbotsford (CA)              | \$220   |   |   |
| Kamloops (CA)                | \$220   |   |   |
| Kelowna (CMA)                | \$220   |   |   |
| Nanaimo (CA)                 | \$220   |   |   |
| Prince George (CA)           | \$220   |   |   |
| Vancouver (CMA)              | \$1,115   |   |   |
| Victoria (CMA)               | \$275   |   |   |
| <b>Yukon Territory</b>       | \$220   | \$110   | \$80  |
| <b>Northwest Territories</b> | \$220   | \$110   | \$80  |
| <b>Nunavut</b>               | \$220   | \$110   | \$80  |

**Note:** Six CAs from the previous census became CMAs: Moncton, N.B., Barrie, Ont., Brantford, Ont., Guelph Ont., Peterborough, Ont., and Kelowna, B.C.

## Postal Codes by Federal Ridings (2003 Representation Order) File

The Postal Codes by Federal Ridings File provides a link between the six character postal codes and the federal electoral districts (2003 Representation Order). A federal electoral district, commonly referred to as a federal riding, is an area represented by a Member of Parliament in the House of Commons.

The Postal Codes by Federal Ridings File is intended as a tool for use with administrative files containing postal codes. By using the postal code as a link, data from administrative files may be organised and/or tabulated by federal riding. This Postal Codes by Federal Ridings File allows a link of more than 800,000 postal codes to the 308 federal electoral districts.

The Postal Codes by Federal Ridings Files are available as standard packages for Canada and five regions. A reference guide is included.

**Format:** flat ASCII file.

| Catalogue no.     | Medium   | Language  | Initial price | Release date |
|-------------------|----------|-----------|---------------|--------------|
| 92-193-XWB2006001 | Internet | Bilingual | \$2,500       | Fall 2007    |
| 92-193-XCB2006001 | CD-ROM   | Bilingual | \$2,500       | Fall 2007    |

**Price notes:** See Table 4.2 for prices for the five regions. Clients who purchase the Postal Codes by Federal Ridings (2003 Representation Order) File at the initial price may purchase subsequent update files at the update rate. For details, see Postal Code by Federal Ridings File – Update (Catalogue no. 92-193-UCB, UWB).

## Postal Codes by Federal Ridings (2003 Representation Order) File – Update

The Postal Code by Federal Ridings File is updated with new postal codes on a semi-annual basis and is available in January and July. Updates released in July provide new postal codes effective January of the release year. Updates released in January provide new postal codes in use in July of the previous year. Clients who purchase the Postal Code by Federal Ridings File (92F193XCB) at the initial price may then purchase subsequent updated files (92F0193UCB) at the update rate (see Table 4.2 for details).

The Postal Code by Federal Ridings File Updates are available as standard packages for Canada and five regions.

**Format:** flat ASCII file.

| Catalogue no.     | Medium   | Language  | Update price | Release date |
|-------------------|----------|-----------|--------------|--------------|
| 92-193-UWB2006001 | Internet | Bilingual | \$500        | Fall 2007    |
| 92-193-UCB2006001 | CD-ROM   | Bilingual | \$500        | Fall 2007    |

**Table 4.2 Summary of prices for postal code by federal ridings file and postal code by federal ridings file updates, for Canada and regions**

| <b>Coverage</b>                              | <b>Postal code by federal ridings file (92-193-XCB, XWB)</b> | <b>Postal code by federal ridings file updates (92-193-UCB, XWB)</b> |
|--|--|--|
| CANADA                                       | \$2,500  | \$500  |
| Atlantic Provinces                           | \$330  | \$200  |
| Quebec                                       | \$695  | \$200  |
| Ontario                                      | \$985  | \$200  |
| Prairies provinces and Northwest Territories | \$690  | \$200  |
| British Columbia and Yukon Territory         | \$510  | \$200  |



## 5. Geographic services

A variety of services are available, including custom mapping, custom data extraction (geocoding) and the development of custom geography products.

### Custom Area Creation Service

The Custom Area Creation Service allows users to define their own geographic areas of study (user-defined areas or aggregations of standard census geographic areas) for census data tabulations. This custom geography is produced from the aggregation of blocks, or where necessary, block-faces within the road network file coverage. The custom area files are then used for data tabulation. Contact us through the National inquiries line at 1-800-263-1136, by email at [infostats@statcan.ca](mailto:infostats@statcan.ca) or visit our website at [www.statcan.ca](http://www.statcan.ca).

| Catalogue no. | Price   | Availability  |
|---------------|---|---|
| 97C0005       | The minimum cost for this service is \$128. Cost estimates will be provided based on client's specifications, and on the complexity of the request. | Custom area creation services related to the 2006 geography will be offered starting in the fourth quarter of 2007. |

### Geography Custom Service

If standard geography products do not satisfy a client's needs, the Geography Custom Service is available to produce non-standard geographic products. For example, it is possible to produce a different set of geographic files, retrieve special data, as well as manipulate or merge any of the geography computer files (postal code files, boundary files, road network file and road network and geographic attribute files). Contact us through the National inquiries line at 1-800-263-1136, by email at [infostats@statcan.ca](mailto:infostats@statcan.ca) or visit our website at [www.statcan.ca](http://www.statcan.ca).

| Catalogue no. | Price   | Availability  |
|---------------|---|---|
| 97C0006       | The minimum cost for this service is \$128. Cost estimates will be provided based on client's specifications, and on the complexity of the request. | Custom services based on 2006 Census geography are available from March 13, 2007. |

### Geography Custom Mapping

Thematic maps and other maps, specially designed to meet customer needs, can be produced. Contact us through the National inquiries line at 1-800-263-1136, by email at [infostats@statcan.ca](mailto:infostats@statcan.ca) or visit our website at [www.statcan.ca](http://www.statcan.ca).

| Catalogue no. | Price   | Availability  |
|---------------|---|---|
| 97C0007       | The minimum cost for this service is \$128. Cost estimates will be provided based on client's specifications, and on the complexity of the request. | Custom maps based on the 2006 Census will be available starting March 13, 2007. |

## 6. Other Statistics Canada related geographic products and services

### Agriculture products and services

The Agriculture Division provides Digital Products and Special Services.

#### Agricultural Ecumene of Canada, 2006

This boundary file delineates areas of significant agricultural activity in Canada as indicated by the 2006 Census of Agriculture. It is available at the Canada level, except for the territories, and is generalized for small-scale mapping. This agricultural ecumene enables users to thematically map data aggregated to the census division level and limits the data display to those areas where agricultural activity is concentrated in Canada. When used in dot and choropleth maps, the ecumene concept provides a more accurate depiction of the spatial distribution of data within standard geographic areas such as census divisions. Agricultural indicators including the ratios of total agricultural land to total land area, and total agricultural receipts to total land area were used in generating the agricultural ecumene.

|                  |  |
|------------------|--|
| <b>Coverage:</b> | All Canada except the Yukon, Northwest Territories and Nunavut |
| <b>Price:</b>    | Free   |
| <b>Media:</b>    | Internet   |
| <b>Release</b>   | Forthcoming  |

#### Cartographic Boundary File for census agricultural regions (CARs)

This Cartographic Boundary File for Canada contains the boundaries of all 82 census agricultural regions delineated for the 2006 Census of Agriculture together with the shoreline around Canada and the larger inland lakes, all integrated in a single layer. The boundary file co-ordinates are latitude/longitude and are based on the North American Datum of 1983 (NAD83). The file is available in both ArcInfo® Interchange and MapInfo® Interchange formats and a reference guide is also provided.

|                |              |
|----------------|--------------|
| <b>Price:</b>  | Free         |
| <b>Media:</b>  | Internet     |
| <b>Release</b> | May 16, 2007 |

#### Spatial analysis and geomatics applications (SAGA) program

SAGA provides a variety of products and services using the tools and methodologies of digital image analysis and geographic information systems. The SAGA program has evolved from a remote sensing research and development emphasis to a much broader program that includes operational agricultural and environmental applications and custom mapping, image analysis, and geomatics services.

SAGA offers remote sensing and geostatistical services on a fee-for-services basis. In addition to the custom mapping and image analysis capabilities, other applications could include:

- Estimation of crop and vegetation area, and crop yields by user-defined statistical units, such as risk areas, management districts
- Remote sensing/geographic information system integration and custom mapping
- Analysis and mapping of land-use classification and change monitoring
- Statistical sample frame construction for agriculture surveys
- Remote sensing consulting and training
- Spatial and statistical data integration

For further information on Agriculture Products and Services, please refer to *People, Products and Services - Agriculture Division, 2006* (Catalogue number 21F0003GPB, on the Internet 21F0003GIE).

## Environment services

### The Environmental Information System

The Environmental Information System provides detailed spatial information on social and economic characteristics that influence environmental conditions. These characteristics are aggregated by spatial boundaries that are highly effective for the analysis of environmental issues: drainage basins and ecozones.

The problem-solving power of this system comes from its ability to overlay and aggregate a wide variety of Statistics Canada micro-data series into new tabulations, charts or maps. Information from the system can also be combined with external data sets or geographic boundaries provided by the client to suit specific needs. We offer a full line of services, ranging from table and map preparation to a complete statistical consulting service, including analysis and report preparation on specific environmental issues.

The core data in the Environmental Information System (EIS) resides in the ArcInfo<sup>®</sup> Geographic Information System. Analytical results can be provided for various formats:

- Spreadsheets
- ASCII files
- Micro computer databases
- Tables on paper
- ARCVIEW<sup>®</sup> products
- ArcInfo<sup>®</sup> export files
- Maps on paper, image or postscript files

For more information on Environment Services, please contact:

Environment Accounts and Statistics Division  
Statistics Canada  
7th Floor, R. H. Coats Building  
Tunney's Pasture, Ottawa  
K1A 0T6

Telephone: 613-951-0297  
Fax Number: 613-951-0634 or  
e-mail: [environ@statcan.ca](mailto:environ@statcan.ca)

## Appendix A: Glossary

### **Adjusted counts**

'Adjusted counts' refer to previous census population and dwelling counts that were adjusted (i.e., recompiled) to reflect current census boundaries, when a boundary change occurs between the two censuses.

### **Block-face**

A block-face is one side of a street between two consecutive features intersecting that street. The features can be other streets or boundaries of standard geographic areas.

Block-faces are used for generating block-face representative points, which in turn are used for geocoding and census data extraction when the street and address information are available.

### **Cartographic boundary files**

Cartographic boundary files (CBFs) contain the boundaries of standard geographic areas together with the shoreline around Canada. Selected inland lakes and rivers are available as a supplementary layer.

### **Census agricultural region**

Census agricultural regions (CARs) are composed of groups of adjacent census divisions. In Saskatchewan, census agricultural regions are made up of groups of adjacent census consolidated subdivisions, but these groups do not necessarily respect census division boundaries.

### **Census consolidated subdivision**

A census consolidated subdivision (CCS) is a group of adjacent census subdivisions. Generally, the smaller, more urban census subdivisions (towns, villages, etc.) are combined with the surrounding, larger, more rural census subdivision, in order to create a geographic level between the census subdivision and the census division.

### **Census division**

Census division (CD) is the general term for provincially legislated areas (such as county, *municipalité régionale de comté* and regional district) or their equivalents. Census divisions are intermediate geographic areas between the province/territory level and the municipality (census subdivision).

### **Census metropolitan area and census agglomeration**

A census metropolitan area (CMA) or a census agglomeration (CA) is formed by one or more adjacent municipalities centred on a large urban area (known as the urban core). A CMA must have a total population of at least 100,000 of which 50,000 or more must live in the urban core. A CA must have an urban core population of at least 10,000. To be included in the CMA or CA, other adjacent municipalities must have a high degree of integration with the central urban area, as measured by commuting flows derived from census place of work data.

If the population of the urban core of a CA declines below 10,000, the CA is retired. However, once an area becomes a CMA, it is retained as a CMA even if its total population declines below 100,000 or the population of its urban core falls below 50,000. The urban areas in the CMA or CA that are not contiguous to the urban core are called the urban fringe. Rural areas in the CMA or CA are called the rural fringe.

When a CA has an urban core of at least 50,000, it is subdivided into census tracts. Census tracts are maintained for the CA even if the population of the urban core subsequently falls below 50,000. All CMAs are subdivided into census tracts.

### **Census metropolitan area and census agglomeration influenced zone**

The census metropolitan area and census agglomeration influenced zone (MIZ) is a concept that geographically differentiates the area of Canada outside census metropolitan areas (CMAs) and census agglomerations (CAs). Census subdivisions outside CMAs and CAs are assigned to one of four categories according to the degree of influence (strong, moderate, weak or no influence) that the CMAs and/or CAs have on them.

Census subdivisions (CSDs) are assigned to a MIZ category based on the percentage of their resident employed labour force that has a place of work in the urban core(s) of CMAs or CAs. CSDs with the same degree of influence tend to be clustered. They form zones around CMAs and CAs that progress through the categories from 'strong' to 'no' influence as distance from the CMAs and CAs increases.

### **Census subdivision**

Census subdivision (CSD) is the general term for municipalities (as determined by provincial/territorial legislation) or areas treated as municipal equivalents for statistical purposes (e.g., Indian reserves, Indian settlements and unorganized territories).

### **Census tract**

Census tracts (CTs) are small, relatively stable geographic areas that usually have a population of 2,500 to 8,000. They are located in census metropolitan areas and in census agglomerations with an urban core population of 50,000 or more in the previous census.

A committee of local specialists (for example, planners, health and social workers, and educators) initially delineates census tracts in conjunction with Statistics Canada. Once a census metropolitan area (CMA) or census agglomeration (CA) has been subdivided into census tracts, the census tracts are maintained even if the urban core population subsequently declines below 50,000.

### **Coordinate system**

A coordinate system is a reference system based on mathematical rules for specifying positions (locations) on the surface of the earth. The coordinate values can be spherical (latitude and longitude) or planar (such as Universal Transverse Mercator).

Cartographic boundary files, digital boundary files, representative points and road network files are disseminated in latitude/longitude coordinates.

### **Datum**

A datum is a geodetic reference system that specifies the size and shape of the earth, and the base point from which the latitude and longitude of all other points on the earth's surface are referenced.

### **Designated place**

A designated place (DPL) is normally a small community or settlement that does not meet the criteria established by Statistics Canada to be a census subdivision (an area with municipal status) or an urban area.

Designated places are created by provinces and territories, in cooperation with Statistics Canada, to provide data for submunicipal areas.

**Digital boundary files**

Digital boundary files (DBFs) portray the boundaries used for 2006 Census collection and, therefore, often extend as straight lines into bodies of water.

**Dissemination area**

A dissemination area (DA) is a small, relatively stable geographic unit composed of one or more adjacent dissemination blocks. It is the smallest standard geographic area for which all census data are disseminated. DAs cover all the territory of Canada.

**Dissemination block**

A dissemination block (DB) is an area bounded on all sides by roads and/or boundaries of standard geographic areas. The dissemination block is the smallest geographic area for which population and dwelling counts are disseminated. Dissemination blocks cover all the territory of Canada.

**Economic region**

An economic region (ER) is a grouping of complete census divisions (CDs) (with one exception in Ontario) created as a standard geographic unit for analysis of regional economic activity.

**Ecumene**

Ecumene is a term used by geographers to mean inhabited land. It generally refers to land where people have made their permanent home, and to all work areas that are considered occupied and used for agricultural or any other economic purpose. Thus, there can be various types of ecumenes, each having their own unique characteristics (population ecumene, agricultural ecumene, industrial ecumene, etc.).

**Federal electoral district**

A federal electoral district (FED) is an area represented by a member of the House of Commons. The federal electoral district boundaries used for the 2006 Census are based on the 2003 Representation Order.

**Geocoding**

Geocoding is the process of assigning geographic identifiers (codes) to map features and data records. The resulting geocodes permit data to be linked geographically.

Households, postal codes and place of work data are linked to block-face representative points when the street and address information is available; otherwise, they are linked to dissemination block (DB) representative points. In some cases, postal codes and place of work data are linked to dissemination area (DA) representative points when they cannot be linked to DBs. As well, place of work data are linked to census subdivision representative points when the data cannot be linked to DAs.

**Geographic code**

A geographic code is a numerical identifier assigned to a geographic area. The code is used to identify and access standard geographic areas for the purposes of data storage, retrieval and display.

**Geographic reference date**

The geographic reference date is a date determined by Statistics Canada for the purpose of finalizing the geographic framework for which census data will be collected, tabulated and reported. For the 2006 Census, the geographic reference date is January 1, 2006.

**Land area**

Land area is the area in square kilometres of the land-based portions of standard geographic areas.

Land area data are unofficial, and are provided for the sole purpose of calculating population density.

**Locality**

'Locality' (LOC) refers to the historical place names of former census subdivisions (municipalities), former designated places and former urban areas, as well as to the names of other entities, such as neighbourhoods, post offices, communities and unincorporated places.

**Map projection**

A map projection is the process of transforming and representing positions from the earth's three-dimensional curved surface to a two-dimensional (flat) surface. The process is accomplished by a direct geometric projection or by a mathematically derived transformation.

The Lambert conformal conic map projection is widely used for general maps of Canada at small scales and is the most common map projection used at Statistics Canada.

**National Geographic Database**

The National Geographic Database (NGD) is a shared database between Statistics Canada and Elections Canada. The database contains roads, road names and address ranges. It also includes separate reference layers containing physical and cultural features, such as hydrography and hydrographic names, railroads and power transmission lines.

The NGD was created in 1997 as a joint Statistics Canada/Elections Canada initiative to develop and maintain a national road network file serving the needs of both organizations. The active building of the NGD – that is, integrating the files from Statistics Canada, Elections Canada and Natural Resources Canada – occurred from 1998 to 2000. Thereafter, Statistics Canada and Elections Canada reconciled their digital boundary holdings to the new database's road network geometry so that operational products could be derived.

Since 2001, the focus of the NGD has been on intensive data quality improvements, especially regarding the quality and currency of its road network coverage. There has been considerable expansion of road names and civic addresses ranges, as well as the addition of hydrographic names. Priorities were determined by Statistics Canada and Elections Canada, enabling the NGD to meet the joint operational needs of both agencies in support of census and electoral activities.

**Place name**

'Place name' refers to the set of names that includes current census subdivisions (municipalities), current designated places and current urban areas, as well as the names of localities.

**Population density**

Population density is the number of persons per square kilometre.

**Postal code**

The postal code is a six-character code defined and maintained by Canada Post Corporation for the purpose of sorting and delivering mail.

**Province or territory**

Province and territory refer to the major political units of Canada. From a statistical point of view, province and territory are basic areas for which data are tabulated. Canada is divided into 10 provinces and three territories.

### **Reference map**

A reference map shows the location of the geographic areas for which census data are tabulated and disseminated. The maps display the boundaries, names and codes of standard geographic areas, as well as major cultural and physical features, such as roads, railroads, coastlines, rivers and lakes.

### **Representative point**

A representative point is a point that represents a line or a polygon. The point is centrally located along the line, and centrally located or population weighted in the polygon.

Representative points are generated for block-faces, dissemination blocks, dissemination areas, census subdivisions, urban areas and designated places.

Households, postal codes and place of work data are linked to block-face representative points when the street and address information is available; otherwise, they are linked to dissemination block (DB) representative points. In some cases, postal codes and place of work data are linked to dissemination area (DA) representative points when they cannot be linked to DBs. As well, place of work data are linked to census subdivision representative points when the data cannot be linked to DAs.

### **Road network file**

The road network file (RNF) contains roads, road names, address ranges and road ranks for the entire country. Most commonly, address ranges are dwelling-based and are mainly available in the large urban centres of Canada.

### **Rural area**

Rural areas include all territory lying outside urban areas. Taken together, urban and rural areas cover all of Canada.

Rural population includes all population living in the rural fringes of census metropolitan areas (CMAs) and census agglomerations (CAs), as well as population living in rural areas outside CMAs and CAs.

### **Spatial Data Infrastructure**

The Spatial Data Infrastructure (SDI), formerly known as the National Geographic Base (NGB), is an internal, maintenance database that is not disseminated outside of Statistics Canada. It contains roads, road names and address ranges from the National Geographic Database (NGD), as well as boundary arcs of standard geographic areas that do not follow roads, all in one integrated line layer. The database also includes a related polygon layer consisting of basic blocks (BB) (basic blocks are the smallest polygon units in the database, and are formed by the intersection of all roads and the arcs of geographic areas that do not follow roads), boundary layers of standard geographic areas, and derived attribute tables, as well as reference layers containing physical and cultural features (such as hydrography, railroads and power transmission lines) from the NGD.

The SDI supports a wide range of census operations, such as the maintenance and delineation of the boundaries of standard geographic areas (including the automated delineation of dissemination blocks, dissemination areas and urban areas), and geocoding. The SDI is also the source for generating many geography products for the 2006 Census, such as cartographic boundary files and road network files.



### **Spatial data quality elements**

Spatial data quality elements provide information on the fitness for use of a spatial database by describing why, when and how the data are created, and how accurate the data are. The elements include an overview describing the purpose and usage, as well as specific quality elements reporting on the lineage, positional accuracy, attribute accuracy, logical consistency and completeness. This information is provided to users for all spatial data products disseminated for the census.

### **Standard Geographical Classification**

The Standard Geographical Classification (SGC) is Statistics Canada's official classification for three types of geographic areas: provinces and territories, census divisions (CDs) and census subdivisions (CSDs). The SGC provides unique numeric identification (codes) for these hierarchically related geographic areas.

### **Statistical Area Classification**

The Statistical Area Classification (SAC) groups census subdivisions according to whether they are a component of a census metropolitan area, a census agglomeration, a census metropolitan area and census agglomeration influenced zone (strong MIZ, moderate MIZ, weak MIZ or no MIZ), or the territories (Yukon Territory, Northwest Territories and Nunavut). The SAC is used for data dissemination purposes.

### **Thematic map**

A thematic map shows the spatial distribution of one or more specific data themes for standard geographic areas. The map may be qualitative in nature (e.g., predominant farm types) or quantitative (e.g., percentage population change).

### **Urban area**

An urban area has a minimum population concentration of 1,000 persons and a population density of at least 400 persons per square kilometre, based on the current census population count. All territory outside urban areas is classified as rural. Taken together, urban and rural areas cover all of Canada.

Urban population includes all population living in the urban cores, secondary urban cores and urban fringes of census metropolitan areas (CMAs) and census agglomerations (CAs), as well as the population living in urban areas outside CMAs and CAs.

### **Urban core, urban fringe and rural fringe**

'Urban core, urban fringe and rural fringe' distinguish between central and peripheral urban and rural areas within a census metropolitan area (CMA) or census agglomeration (CA).

'Urban core' is a large urban area around which a CMA or a CA is delineated. The urban core must have a population (based on the previous census) of at least 50,000 persons in the case of a CMA, or at least 10,000 persons in the case of a CA.

The urban core of a CA that has been merged with an adjacent CMA or larger CA is called the 'secondary urban core'.

'Urban fringe' includes all small urban areas within a CMA or CA that are not contiguous with the urban core of the CMA or CA.

'Rural fringe' is all territory within a CMA or CA not classified as an urban core or an urban fringe.

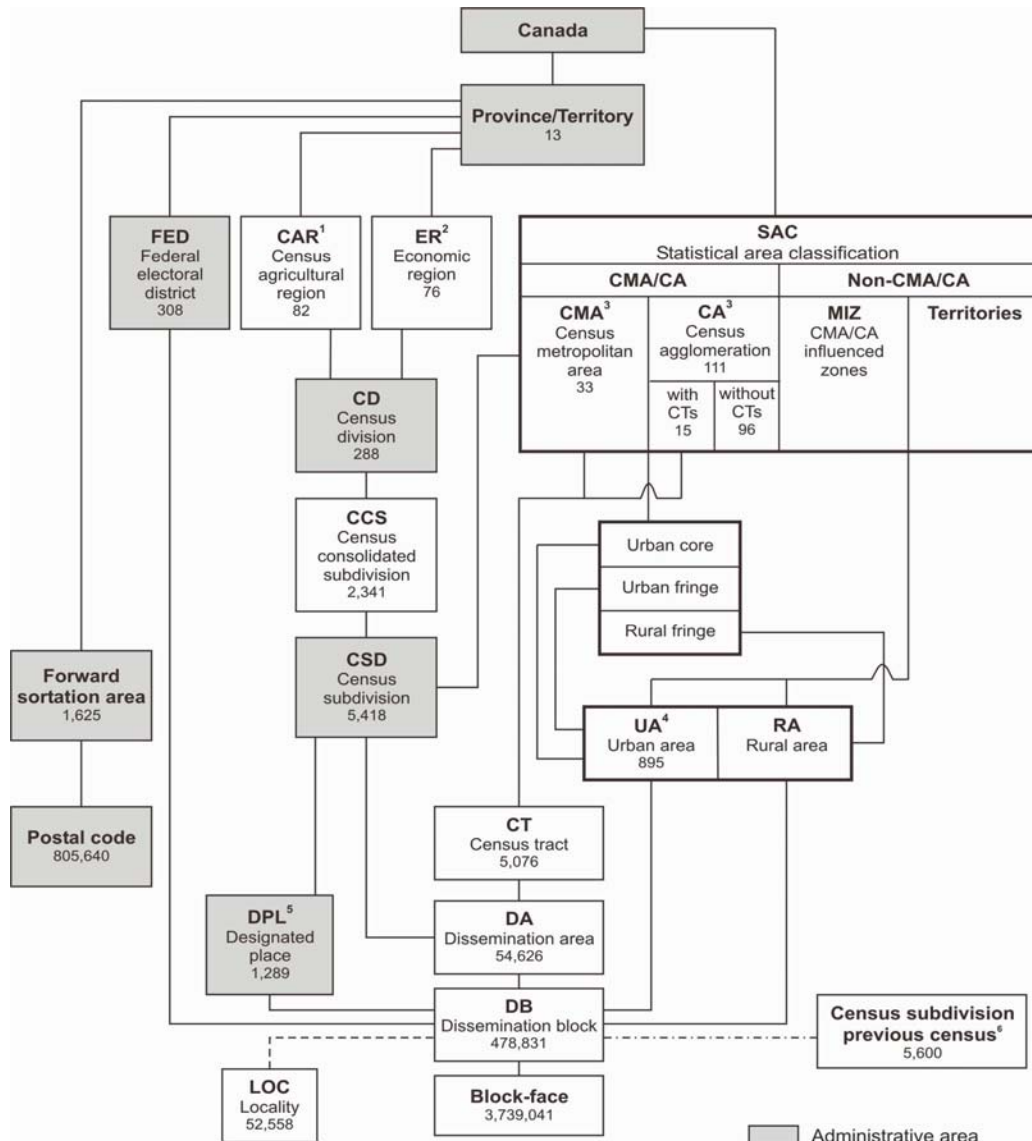
**Urban population size group**

The term 'urban population size group' refers to the classification used in standard tabulations where urban areas are distributed according to the following predetermined size groups, based on the current census population.

|         |          |         |
|---------|----------|---------|
| 1,000   | to       | 2,499   |
| 2,500   | to       | 4,999   |
| 5,000   | to       | 9,999   |
| 10,000  | to       | 24,999  |
| 25,000  | to       | 49,999  |
| 50,000  | to       | 99,999  |
| 100,000 | to       | 499,999 |
| 500,000 | and over |         |

Tabulations are not limited to these predetermined population size groups; the census database has the capability of tabulating data according to any user-defined population size group.

# Appendix B: Hierarchy of standard geographic units for dissemination, 2006 Census



1. Census agricultural regions in Saskatchewan are composed of census consolidated subdivisions.
2. Economic regions are composed of complete census divisions except for one CD in Ontario.
3. One CMA and three CAs cross provincial boundaries.
4. Five UAs cross provincial boundaries.
5. Designated places respect CSD boundaries, but do not cover the total area of CSDs.
6. For the 2006 Census, a best fit linkage is created between the 2001 CSDs and 2006 DBs to facilitate historical data retrieval.

## Appendix C: Geographic units by province and territory, 2006 Census

| Geographic unit   | Canada 2001      | Canada 2006 | N.L.   | P.E.I. | N.S.    | N.B.            | Que.             | Ont.             | Man.            | Sask.           | Alta.            | B.C.    | Y.T.   | N.W.T. | Nvt.  |
|---|------------------|-------------|--------|--------|---------|-----------------|------------------|------------------|-----------------|-----------------|------------------|---------|--------|--------|-------|
| Federal electoral district (2003 Representation Order)  | 301 <sup>1</sup> | 308         | 7      | 4      | 11      | 10              | 75               | 106              | 14              | 14              | 28               | 36      | 1      | 1      | 1     |
| Economic region   | 76               | 76          | 4      | 1      | 5       | 5               | 17               | 11               | 8               | 6               | 8                | 8       | 1      | 1      | 1     |
| Census agricultural region                              | 82               | 82          | 3      | 3      | 5       | 4               | 14               | 5                | 12              | 20              | 8                | 8       | 0      | 0      | 0     |
| Census division   | 288              | 288         | 11     | 3      | 18      | 15              | 98               | 49               | 23              | 18              | 19               | 28      | 1      | 2      | 3     |
| Census consolidated subdivision                         | 2,446            | 2,341       | 89     | 68     | 43      | 151             | 1,008            | 316              | 127             | 300             | 77               | 156     | 1      | 2      | 3     |
| Census subdivision (CSD)                                | 5,600            | 5,418       | 377    | 113    | 100     | 276             | 1,294            | 585              | 297             | 984             | 453              | 836     | 35     | 37     | 31    |
| CSD dissolutions (January 2, 2001 to January 1, 2006)   | 340              | ...         | 9      | 0      | 0       | 0               | 282              | 5                | 7               | 29              | 4                | 4       | 0      | 0      | 0     |
| CSD incorporations (January 2, 2001 to January 1, 2006) | ...              | 158         | 5      | 0      | 2       | 1               | 100              | 4                | 6               | 11              | 5                | 24      | 0      | 0      | 0     |
| Designated place  | 1,261            | 1,289       | 182    | 0      | 49      | 167             | 83               | 88               | 58              | 159             | 262              | 240     | 1      | 0      | 0     |
| Census metropolitan area                                | 27               | 33          | 1      | 0      | 1       | 2               | 6 <sup>2</sup>   | 15 <sup>2</sup>  | 1               | 2               | 2                | 4       | 0      | 0      | 0     |
| Census agglomeration (CA)                               | 113              | 111         | 3      | 2      | 4       | 5 <sup>2</sup>  | 26 <sup>2</sup>  | 28 <sup>2</sup>  | 3               | 7 <sup>2</sup>  | 12 <sup>2</sup>  | 22      | 1      | 1      | 0     |
| CA with census tracts                                   | 16               | 15          | 0      | 0      | 0       | 1               | 3                | 4                | 0               | 0               | 3                | 4       | 0      | 0      | 0     |
| CA without census tracts                                | 94               | 96          | 3      | 2      | 4       | 4 <sup>2</sup>  | 23 <sup>2</sup>  | 24 <sup>2</sup>  | 3               | 7 <sup>2</sup>  | 9 <sup>2</sup>   | 18      | 1      | 1      | 0     |
| Census tract  | 4,798            | 5,076       | 46     | 0      | 88      | 99              | 1,289            | 2,136            | 168             | 105             | 491              | 654     | 0      | 0      | 0     |
| Urban area  | 913              | 895         | 32     | 7      | 36      | 32 <sup>2</sup> | 226 <sup>2</sup> | 260 <sup>2</sup> | 38 <sup>2</sup> | 58 <sup>2</sup> | 107 <sup>2</sup> | 95      | 1      | 3      | 5     |
| Locality  | 52,291           | 52,558      | 2,445  | 964    | 3,924   | 3,450           | 12,617           | 10,905           | 2,349           | 3,898           | 3,472            | 7,708   | 363    | 173    | 290   |
| Dissemination area                                      | 52,993           | 54,626      | 1,062  | 292    | 1,633   | 1,439           | 13,408           | 19,177           | 2,152           | 2,431           | 5,357            | 7,471   | 78     | 84     | 42    |
| Dissemination block                                     | 478,707          | 478,831     | 8,199  | 3,251  | 14,656  | 14,864          | 108,751          | 126,244          | 30,421          | 51,729          | 65,071           | 52,808  | 1,261  | 967    | 609   |
| Block-face  | 3,764,232        | 3,739,041   | 78,376 | 26,190 | 154,564 | 132,873         | 835,458          | 942,567          | 198,063         | 361,069         | 507,859          | 473,418 | 11,888 | 11,620 | 5,096 |
| Forward sortation area                                  | 1,595            | 1,625       | 35     | 7      | 76      | 110             | 415              | 522              | 64              | 48              | 150              | 189     | 3      | 3      | 3     |
| Postal code   | 758,658          | 805,640     | 10,378 | 3,157  | 25,313  | 57,355          | 202,972          | 269,676          | 23,943          | 21,541          | 76,924           | 112,904 | 942    | 506    | 29    |

... not applicable

1. Federal electoral districts (1996 Representation Order).
2. Census metropolitan areas, census agglomerations and urban areas crossing provincial boundaries are counted in both provinces, and, therefore, do not add up to the national total.

# Example of end-use licence agreement for Statistics Canada's for fee products

## End-use licence agreement for Statistics Canada's *insert product name here*, 2006 Census

### Copyright

The Government of Canada (Statistics Canada) is the owner or a licensee of all intellectual property rights (including copyright) in this data product. With your payment of the requisite fee, you (hereinafter referred to as 'the Licensee') are granted a non-exclusive, non-assignable and non-transferable licence to use this data product subject to the terms below. This licence is not a sale of any or all of the rights of the owner(s).

### Terms of use

1. All copyright and proprietary notices, as well as all conditions of use associated with the data product, must be communicated to all users of the data product.
2. The Licensee shall not transfer this data product to, or store the data product in, any electronic network for use by more than three (3) regular users unless the Licensee obtains prior written permission from Statistics Canada and pays any additional fees.
3. The Licensee shall not lend, rent, lease, sublicense, transfer or sell any part of the data product nor any right granted under this agreement to any person outside the licensed organization or to any other organization.
4. The Licensee shall not disassemble, decompile or in any way attempt to reverse engineer any software provided as part of the data product.
5. The Licensee shall not use any part of the data product to develop or derive any other data product or data service for external distribution or commercial sale.
6. The Licensee is granted reasonable rights of use of the content of this data product only for personal, corporate or public policy research, as well as for educational purposes. This permission includes the use of the content in analyses and in the reporting of results and conclusions, including the citation of limited amounts of supporting data, extracted from the data product, in such documents. In such cases, the source of the data must be acknowledged in all such documents and communications by providing the following source citation at the bottom of each table and graph:  
  
Source (or 'Adapted from,' if appropriate): *Division name*, Statistics Canada, *product name*, *catalogue number*, 2006 Census.
7. The Licensee shall obtain approval from Statistics Canada before publishing any significant volume of material, in any medium, that is extracted from the data product.
8. The Licensee agrees not to merge or link the data product with any other databases in such a fashion that gives the appearance that the Licensee may have received, or had access to, information held by Statistics Canada about any identifiable individual, family, household, organization or business.

9. Any violation of this licence renders it void and of no effect. This agreement will terminate automatically without notice if the Licensee fails to comply with any of the terms of this agreement. In the event of termination, the Licensee must immediately return the data product to Statistics Canada or destroy it and certify this destruction in writing to Statistics Canada.

#### **Warranties and disclaimers**

This data product is provided 'as-is,' and Statistics Canada makes no warranty, either express or implied, including but not limited to, warranties of merchantability and fitness for a particular purpose. In no event will Statistics Canada be liable for any direct, special, indirect, consequential or other damages, however caused.

#### **Acceptance of terms**

It is **your responsibility** to ensure that your use of this data product complies with these terms and to seek prior written permission from Statistics Canada for any uses not permitted or not specified in this agreement. Any infringement of Statistics Canada's rights may result in legal action.

**Any use whatsoever of this data product shall constitute your acceptance of the terms of this agreement. Any violation of these terms may result in termination of this licence.**

#### **For further information please contact:**

Licensing Services  
Client Services Division, Statistics Canada  
9th Floor, R.H. Coats Building  
Ottawa, Ontario K1A 0T6  
Canada

E-mail: [licensing@statcan.ca](mailto:licensing@statcan.ca)  
Telephone: 613-951-1122  
Fax: 613-951-1134

© Statistics Canada, 2007

# Example of unrestricted use licence agreement for free Statistics Canada products

## Unrestricted use licence agreement for Statistics Canada's free *insert product name here*, 2006 Census

This is a legal agreement between you, hereinafter referred to as the "Licensee," and Her Majesty the Queen in Right of Canada (Canada) as represented by the Minister of Industry (Statistics Canada), hereinafter referred to as the "Licensor." BY ACCESSING, DOWNLOADING, PRINTING OR USING THE DATA, INFORMATION AND MATERIALS BEING PROVIDED WITH, OR ACCESSIBLE PURSUANT TO THIS AGREEMENT, YOU ARE AGREEING TO BE BOUND BY THE TERMS OF THIS AGREEMENT. IF YOU DO NOT AGREE TO THE TERMS OF THIS AGREEMENT, YOU MUST IMMEDIATELY DISPOSE OF ANY SUCH DATA, INFORMATION, MATERIALS AND ANY DERIVED PRODUCTS.

- I WHEREAS the Licensor is the owner or licensee of intellectual property rights in and to digital data contained in the database known as Statistics Canada's free *insert product name here*, 2006 Census;
- II AND WHEREAS the Licensee wishes to obtain certain rights to the Data, in accordance with the terms and conditions herein contained;
- III AND WHEREAS the Licensor wishes to grant to the Licensee certain rights to the Data, in accordance with the terms and conditions herein contained;
- IV AND WHEREAS the Licensor represents that it has full authority to grant the rights desired by the Licensee on the terms and conditions herein contained;
- V AND WHEREAS the parties hereto are desirous of entering into a licence agreement on the basis herein set forth,  
NOW THEREFORE, in consideration of the covenants contained in this Agreement, the parties agree as follows:

### 1.0 DEFINITIONS

- 1.1 "Agreement" means this Unrestricted Use Licence Agreement and all schedules annexed to this agreement, as the same may be amended from time to time in accordance with the provisions hereof.
- 1.2 "Data" means any original and fixed digital data (i.e. that is transmitted electronically), metadata, software or documentation licensed pursuant to the terms and conditions of this Agreement.
- 1.3 "Derived Products" means any product or service created from, or made functional through, the use of all or part of the Data.
- 1.4 "Intellectual Property Rights" means any and all intellectual property rights recognized by the law, including any intellectual property right protected through legislation.
- 1.5 "Licensor's Data" means that Data, the Intellectual Property Rights of which vest with the Licensor
- 1.6 "Licensor's Licensed Rights" means those rights conferred upon the Licensor by third parties over the use of Data which is not the Licensor's Data.

1.7 “Modifications” means any modification, enhancement, translation, update or upgrade of all or any part of the Data, in any medium.

## **2.0 INTELLECTUAL PROPERTY RIGHTS**

2.1 All title and Intellectual Property Rights in and to the Licensor’s Data shall at all times remain the property of the Licensor. All title and Intellectual Property Rights in and to the Data that is not the Licensor’s Data are the property of the respective content owners and may be protected by copyright, other intellectual property laws, common law or international treaties.

## **3.0 LICENCE GRANT**

3.1 Subject to this Agreement, the Licensor hereby grants to the Licensee a non-exclusive, world-wide, non-assignable, royalty-free right and licence to exercise such of the Licensor’s Licensed Rights and such of the Licensor’s Intellectual Property Rights in the Data as is necessary to use, reproduce, extract, modify, translate, further develop, distribute the Data, manufacture or cause to be manufactured and sell or license or cause to be sold or licensed Derived Products, and to sub-licence any or all of such rights, PROVIDED:

- (i) all reproductions of the Data shall carry the notices and metadata information set out in section 4 hereof and the provisions contained in sections 5, to be amended in such circumstances by replacing the term “Licensor” as found in the aforementioned provisions with the Licensor’s applied title or any such designation as the Licensor may indicate; and
- (ii) all distribution of the Data or licensing by the Licensee of Derived Products containing the Data, and any sub-licence by the Licensee of its rights hereunder, shall be evidenced in writing, shall be on the same terms and conditions as contained herein and shall specifically include the provisions contained in sections 4, 5 and 6.2 hereof, to be amended in the circumstances by replacing in such agreements the term “Licensor” as found in the aforementioned provisions with the Licensor’s applied title or any such designation as the Licensor may indicate.

3.2 The Intellectual Property Rights arising from any Modifications or from the manufacture of Derived Products, effected by or for the Licensee, shall vest in the Licensee or in such person as the Licensee shall decide.

## **4.0 ACKNOWLEDGEMENT OF SOURCE AND INCORPORATION OF METADATA**

4.1 The Licensee shall include the following notice where any of the Data is contained within Derived Products,

*Source: **Division name**, Statistics Canada, **product name**, **catalogue number***

*The incorporation of data sourced from Statistics Canada within this product shall not be construed as constituting an endorsement by Statistics Canada of such product*

or any other notice deemed appropriate by the Licensor.



- 4.2 The Licensee shall reproduce, include and maintain the following notice on all reproductions of the Licensor's Data produced pursuant to Section 3 above:

Reproduced with the permission of Statistics Canada

- 4.3 The Licensee shall incorporate in all reproduction and downstream distribution of the Data all metadata included by the Licensor in the provision of the Data.

## **5.0 REPRESENTATIONS, WARRANTIES, INDEMNITIES**

- 5.1 The Licensor makes no representation or warranty of any kind with respect to the accuracy, usefulness, novelty, validity, scope, completeness or currency of the Data, at any time and from time to time, and expressly disclaims any implied warranty of merchantability or fitness for a particular purpose of the Data. The Licensor does not ensure or warrant compatibility with past, current or future versions of computer software to access the Data.

- 5.2 The Licensee acknowledges having received notice of the disclaimer set out above and accepts the Data on an "as is" basis, without representations or warranties of any kind. No oral or written information or advice given by the Licensor, at any time or from time to time, shall create or evidence, or be deemed to create or evidence, a contractual representation, warranty or guarantee of any kind.

- 5.3 The Licensee shall have no recourse against the Licensor, its officers, directors, employees, authorized agents and contractors, whether by way of any suit or action or other, for any loss, liability, damage or cost that the Licensee may suffer or incur at any time, by reason of the Licensee's possession or use of the Data or arising out of the exercise by the Licensee of its rights hereunder.

- 5.4 The Licensee shall indemnify the Licensor, its officers, directors, employees, authorized agents and contractors from all claims whatsoever alleging loss, costs, expenses, damages or injuries (including injuries resulting in death) arising out of the Licensee's possession or use of the Data or the exercise by the Licensee of its rights hereunder.

- 5.5 The Licensee's obligation to indemnify the Licensor, its officers, directors, employees, authorized agents and contractors, under this Agreement shall not affect or prejudice the Licensor from exercising any other rights under law.

- 5.6 The provisions of this Article shall survive termination of this Agreement.

## **6.0 TERMINATION**

- 6.1 This Agreement may be terminated
- (i) automatically and without notice, if the Licensee commits or permits a breach of any of its covenants or obligations under this Agreement;
  - (ii) upon written notice of termination by the Licensee at any time, and such termination shall take effect thirty (30) days after the receipt by the Licensor of such notice; or
  - (iii) upon mutual agreement of the parties.

6.2 Upon termination of this Agreement, for whatever reason, the Licensee's rights under section 3 shall immediately cease; and all obligations of the Parties which expressly or by their nature survive termination shall continue in full force and effect subsequent to and notwithstanding such termination, until they are fully satisfied or by their nature expire. For greater clarity, but without restricting the generality of the foregoing, the following provisions survive termination of this Agreement:

- section 5 (representations, warranties, indemnities)

6.3 Notwithstanding subsections 6.1 and 6.2 above, the Licensee may continue to use the Data for the purpose of completing orders of Derived Products made before the termination date of this Agreement

6.4 Notwithstanding the termination of this Agreement, all agreements entered into by the Licensee in the exercise of its rights under section 3 thereof prior to such termination and all obligations imposed therein shall continue in full force and effect subject to their terms.

## **7.0 GENERALITIES**

### **7.1 Applicable Law**

This Agreement shall be construed and enforced in accordance with, and the rights of the parties shall be governed by, the laws of Ontario and Canada, as applicable.

### **7.2 Entirety of Agreement**

This Agreement hereto constitute the entire agreement between the parties with respect to its subject matter. This Agreement may only be amended in writing, signed by both parties, which expressly states the intention to amend this Agreement.

### **7.3 Alternate Dispute Resolution**

If a dispute arises concerning this Agreement, or if a proposed modification of any term of this Agreement cannot be agreed between the parties, the parties shall attempt to resolve the matter first by negotiation.

If the parties have not succeeded in negotiating a resolution, then they shall jointly submit the dispute to a mutually accepted mediator. If the parties cannot agree on an acceptable mediator, then either party may submit the dispute to binding arbitration.

The arbitral tribunal shall be governed by the UN Commercial Arbitration Code (the "Code"), referred to in the Commercial Arbitration Act, R.S.C 1985, c. C-4.6, and judgment upon the award rendered by the arbitral tribunal may be entered in any court having jurisdiction over the matter.

The arbitral tribunal shall consist of one arbitrator chosen by the parties.

Subject to the Code, the parties agree that the award and determination of the arbitral tribunal shall be final and binding on both parties, shall be without right of appeal and shall be the exclusive remedy between the parties regarding any claims, counterclaims, issues or disputes presented to the arbitral tribunal.

**Costs**

The Parties shall bear the costs of the mediation equally, except that each party shall bear its own personal costs of the mediation.

The costs of the arbitral tribunal's fees and expenses shall be shared equally by the parties. The parties shall bear their own personal costs except that the losing party shall pay all costs, fees, levies and taxes arising from and necessitated by the enforcement of the arbitral tribunal's award, including, without limitation, registration, enforcement charges or other judicial levies or costs.

**7.4 No Joint Venture**

The Parties expressly disclaim any intention to create a partnership, joint venture or joint enterprise. The Parties acknowledge and agree that nothing contained in this Agreement nor any acts of any party shall constitute or be deemed to constitute the parties as partners, joint ventures or principal and agent in any way or for any purpose. No Party has the authority to act for, or to assume any obligation or responsibility on behalf of the other Party. The relationship between the Parties is intended to be, and shall at all times be construed as that of licensor and licensee.

**7.5 No Waiver**

No condoning, excusing or overlooking by the Licensor of any default by the Licensee, at any time or times, in performing or observing any of the Licensee's obligations hereunder, will operate as a waiver, renunciation, surrender of or otherwise affect the rights of the Licensor in respect of any continuing or subsequent default. No waiver of these rights will be inferred from anything done or omitted by the Licensor, except by an express waiver in writing.

**7.6 Order of Precedence**

If there is a conflict or ambiguity between this Agreement proper and any schedules thereto, the interpretation consistent with this Agreement proper (taking into consideration the statements in the recitals and headings) shall prevail and apply, notwithstanding any wording to the contrary in the applicable schedule.

**7.7 Notices**

The Licensor assumes no obligation or liability whatsoever for the provision of updates to the Data or the provision of notices in relation thereto to the Licensee.

*ANY USE WHATSOEVER OF THIS DATA PRODUCT SHALL CONSTITUTE YOUR ACCEPTANCE OF THE TERMS OF THIS AGREEMENT.*

**For further information please contact:**

Licensing Services  
Marketing Division, Statistics Canada  
R.H. Coats Building, 9th floor, section A  
Ottawa, Ontario K1A 0T6, Canada  
E-mail: [licensing@statcan.ca](mailto:licensing@statcan.ca)  
Telephone: 613-951-1122  
Fax: 613-951-1134

© Statistics Canada, 2007

## Geography products feedback

Please tell us what you think of our products. Send your written comments or suggestions to:

**GEO-Help  
Geography Division  
Statistics Canada  
3rd Floor, Jean Talon Building  
Tunney's Pasture  
Ottawa, Ontario  
K1A 0T6**

Telephone: **613-951-3889**

Fax: **613-951-0569**

Email: **[geohelp@statcan.ca](mailto:geohelp@statcan.ca)**

To order, or for further information, contact us through the National inquiries line at 1-800-263-1136 or through the internet using [infostats@statcan.ca](mailto:infostats@statcan.ca).