



Community Data Program

Building Capacity among Calgary
Data Consortium members

May 25, 2017



Capacity Building in Calgary: What we do

- New member orientation session provided to new consortia (and new staff of member organizations), as required
- 3 hands-on workshops each year, typically facilitated by The City of Calgary (CDP lead), hosted by a member organization
- One-on-one assistance to members, on request
- Focus of this presentation is on the workshops



Advantages of capacity-building approach

- Members are better equipped to self-serve from the CDP catalogue
 - Requests are more focused on difficult-to-find or -understand data
- Builds a community of practice among consortium members
- Supports data-driven decision-making among consortium members
- Broadens opportunities for members to use a wide variety of data
- Fosters consistency of approach to data use among consortium members



Workshops overview

- Three workshops per year, primarily developed and led by City of Calgary staff
- Technical or thematic content, topics chosen with input from consortium members
- Hands-on, repetition and exposure approach to learning
- Workshops include key data use considerations
- Step-by-step instruction and hands-on practice during workshop, with printed exercise hand-outs for future review



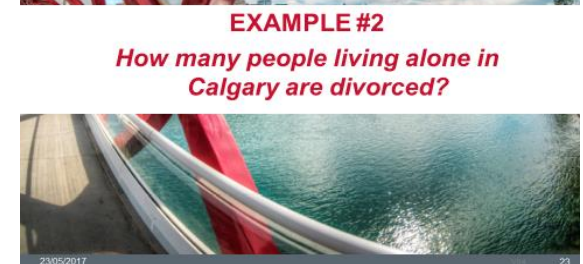
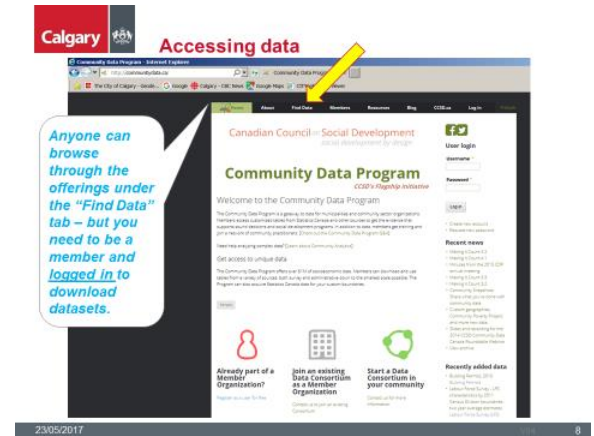
Workshop format

- Hands-on workshop, two to three hours long
- Conducted in-person in a computer lab or with participants' own computers, maximum of 20 participants
- Example agenda:
 - Overview of available data sources (administrative, sample surveys, local resources)
 - Step by step guide to finding the data in the CDP catalogue
 - Follow-along exercise #1
 - Independent exercise #2

Example: New member orientation

New Consortium members (and new representatives) receive an intro to Beyond2020 and CDP on:

- I. Purpose of CDP
- II. How to sign up & access data
- III. Identifying tables & the Beyond 2020 format
- IV. Step by step exercise to embed learning
 - I. Finding, downloading and saving data
 - II. Interpreting and exporting data





Example from *Calgary's Indigenous population workshop*: Overview of available data sources



Available data sources - First Nation Profiles (INAC)

- Includes general information about First Nations along with more detailed information about its reserve(s), governance, federal funding, geography, registered population statistics and various Census statistics; communities can be located using an interactive map
- Registered population ≠ Census population
- <http://fnp-pnp.aandnc-aadnc.gc.ca/fnp/Main/Index.aspx?lang=eng>



Indigenous and Northern Affairs Canada
www.aandnc-aadnc.gc.ca

Registered Population
Official Name: **ETN** | Indian Number: **1000**

Registered Population as of August, 2010

Residency	# of People
Registered Males On-Reserve	4,056
Registered Females On-Reserve	4,960
Registered Males On-Other Reserves	52
Registered Females On-Other Reserves	64
Registered Males On-Other Crown Land	1
Registered Females On-Other Crown Land	1
Registered Males On-Other Band Council Land	0
Registered Females On-Other Band Council Land	0
Registered Males On-Other Reserve	0
Registered Females On-Other Reserve	0
Registered Males Off-Reserve	1,110
Registered Females Off-Reserve	1,117
Total Registered Population	13,244

23/05/2017

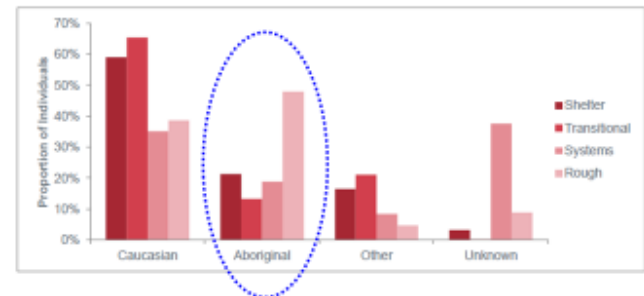
7



Available data sources - Point in Time Homelessness Count

- Calgary Homeless Foundation conducts the Point-in-Time Count – a one day snapshot of homelessness that captures numbers and basic demographics of people staying in emergency shelters, short-term supportive housing, jails, hospitals, and on the streets; most recent available report is for Winter 2014.
- Ethnicity is a dimension which is considered (Caucasian, Aboriginal, Other, Unknown / Not Stated)

Ethnicity Distribution for Total Enumerated Population, By Classification



23/05/2017

7



Example from *Calgary's Indigenous population workshop*: Step by step guide to finding the data in the CDP catalogue



Find data: Data by theme

Data by theme
All of the CDP's data products organized by topic area

- Cultural Identity**
 - Ethnic Origin
 - Immigration
 - Language
 - Religion
 - Visible minority
- Demographics**
 - Age, Sex and Population
 - Children and youth
 - Families
 - Households
 - Labour market
 - Marital status
 - Seniors
 - Single people
- Education**
 - High school certificate, diploma or degree
 - Library Services
 - Location of study
 - Major field of study
 - Tuition assistance
- Housing**
 - Aboriginal
 - Building
 - Building type
 - Location
 - Material
 - Occupancy
 - Ownership
 - Temperature
- Work**
 - Business and industry
 - Employment insurance
 - Labour force
 - Unemployed
- Income**
 - Family and household income
 - Income brackets
- Health**
 - Health
- Crime**
 - Crime

Aboriginal Peoples
Total products categorized with this theme: 30

Aboriginal Identity (I), condition of dwelling (J), number of persons per room (K), age groups (O), sex (B), area of residence (I1) for the population in private households, 2011 NHS
Data provider: Statistics Canada

CPP Table G: Age groups (I), sex (J), income status in 2010 - CPP (O), Aboriginal identity (O) and selected labour force and income characteristics (I2) for the population 15 years and over in private households, 2011
Data provider: Statistics Canada

CPP Table G: Aboriginal identity (O), age groups (I), sex (J), income status in 2010 - CPP (O) and selected income characteristics (I2) for the population 15 years and over with income living in private households, 2011
Data provider: Statistics Canada

Selected demographic, sociocultural, education and labour characteristics (I2), sex (J) and income status in 2010 (I) for the population in private households, NHS, 2011
Data provider: Statistics Canada



Find data: Filter by Data Group

Catalogue
explanatory text
You can also view all our data sorted by topic or theme.

DATA GROUP

- Census, 2006 - Place of work and commuting to work - Topic-based tabulations - 2006 - Urban Poverty Project
- Census, 2011 - Profile
- Census, 2011 - Target group profile**
- Census, 2011 - Age and sex - Topic-based tabulations
- Census, 2011 - Families, households, and marital status - Topic-based tabulations
- Census, 2011 - Language - Topic-based tabulations
- Census, 2011 - Structural type of dwelling and collectives - Topic-based tabulations
- Census of Agriculture

- Census, 2011 – Target group profile
- Core Housing Need
- NHS, 2011 – Aboriginal peoples – Topic-based tabulations
- NHS, 2011 – Community Poverty Project
- NHS, 2011 – Target group profile



Example from *Calgary's Indigenous population workshop*: distilling key usability considerations



National Household Survey, 2011

- **Aboriginal identity**: self-identification as an Aboriginal person, which includes people who said they were:
 - First Nations; or
 - Métis; or
 - Inuk; and/or
 - Registered or Treaty Indian; and/or
 - Member of a First Nation or Indian band
- **Aboriginal Peoples Reference Guide, National Household Survey, 2011*
<https://www12.statcan.gc.ca/nhs-enm/2011/ref/guides/99-011-x/99-011-x2011006-eng.cfm>
- 2016 Census standard data on Aboriginal peoples is scheduled for release in October 2017; additional CDP data products (i.e. topic-based tabulations, custom geographies) expected in 2018



Example from Calgary's Indigenous population workshop: exercise steps

Step 1: Download the data and open the file

Step 2: Explore the file

Step 3: Narrow down to your geographies of interest

Step 4: Manipulate the dimensions

Step 5: Copy into Excel and calculate percentages

(live instruction and handout with detailed instructions provided)



Observations about this approach to capacity building

- The City of Calgary typically takes on the responsibility of developing and leading the workshops
 - Time burden for Calgary staff
 - Opportunity for City staff to strategically plan workshop topics to link to other work
- Participants in Calgary have varied levels of comfort with finding, accessing, and using data from the CDP catalogue
 - Challenge to meet the needs of both beginner and advanced users



Questions?