



Data Empowered Decision Making: Leveraging CDP Data to Inform York Region's Programs and Services

Presented to
Community Data Learning &
Networking Event

Presented by
Valentyn Kliuchnyk, Senior Data Analyst,
The Regional Municipality of York

Presented on
May 8, 2025



PURPOSE



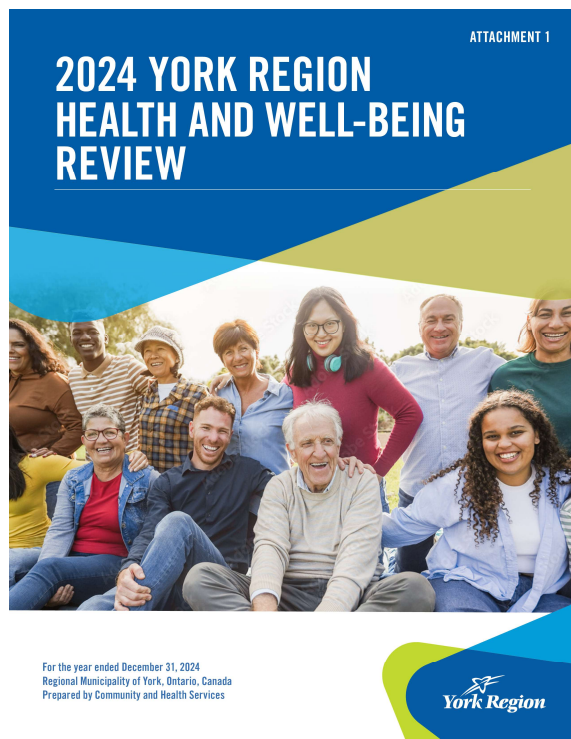
1

- Share our experience using CDP data to inform the Region's service planning and program delivery.

2

- Highlight lessons learned and data gaps identified

YORK REGION HEALTH AND WELL-BEING REVIEW



- 2024 Key Trends: Growing, aging and diversifying population, income security concerns, and mental health and well-being challenges
- Regional Council recommendations 3 and 5:
 - *Council direct staff to work with Human Services Planning Board, other **community partners and municipal counterparts** to identify innovative and collaborative solutions and advocate to senior levels of government for poverty reduction and housing stabilization initiatives and funding*
 - *The Region work with **local municipalities** to distribute this report and Attachment 1 to local non-profit and community organizations*

YORK REGION HEALTH AND WELL-BEING REVIEW

Where Does The Data Come From?



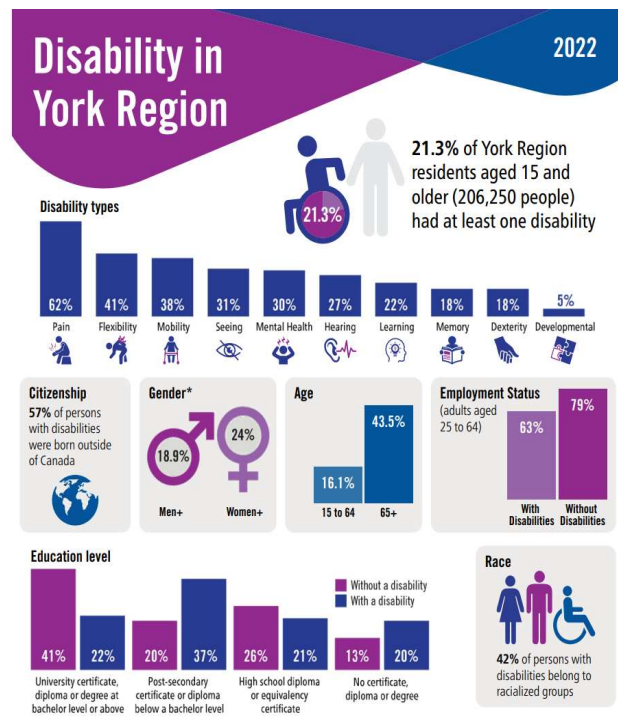
- Census, 2021 -Data Tables
- Taxfiler (T1FF) – Income of Individuals
- Taxfiler (T1FF) - Working Poor and Income Inequality
- Labour Force Survey (LFS)
- Longitudinal Administrative Databank (LAD)
- Canadian Business Counts
- CMHC Data Tables
- Immigration, Refugees and Citizenship Canada data
- Components of Population Change

YORK REGION HEALTH AND WELL-BEING REVIEW

Data Gaps

1. Data sources have different collection schedules and release dates
2. Data quality and availability on a municipal and lived experience level
3. Availability of data on mental health and well-being challenges of our residents

2022 CANADIAN SURVEY ON DISABILITY



- 2022 Key Trends:
 - Growing prevalence of disability among all age groups.
 - Significant increase in learning and mental health-related disabilities
- Resources
 - Results presented to the Ontario Network Accessibility Professionals (ONAP) Conference
 - Results presented to the York Region Accessibility Advisory Committee (YRAAC)
 - Information package developed for YRAAC partners:
 - ✓ Research Brief
 - ✓ Infographic

2022 CANADIAN SURVEY ON DISABILITY

Where Does The Data Come From?



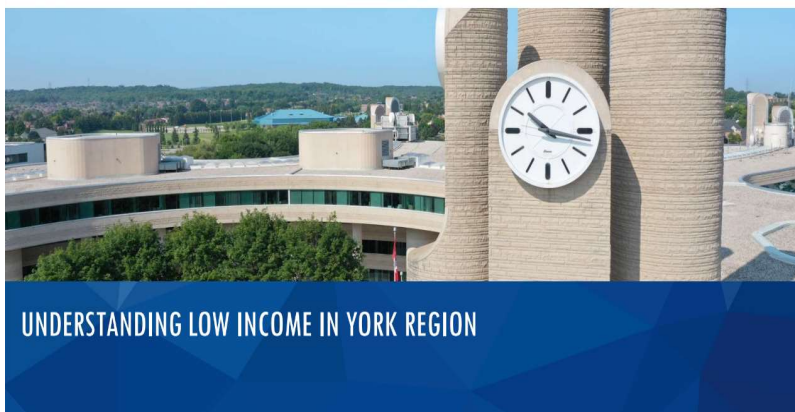
- **2017 Canadian Survey on Disability**
- **2022 Canadian Survey on Disability**

2022 CANADIAN SURVEY ON DISABILITY

Data Gaps

1. Availability of York Region data for trend analysis
2. Data quality and availability on a Census Subdivision level and smaller geographies
3. Exploring the possibility of substituting data on disabilities with information from private data providers and local partners.

UNDERSTANDING LOW INCOME IN YORK REGION



- 2022 Key Trends:
 - *Number of residents in low income suppressing pre-pandemic levels.*
 - *Increase in low income rates among seniors*
 - *Working poverty increased in York Region*
- Resources
 - *Understanding low income in York Region – special edition policy talk for York Region Staff*
 - *PowerBI dashboard - analyzes trends and dynamics related to low-income in York Region*
 - *Companion document – supplementary document to support analysis of low income data*
 - *Working Poor in York Region Analysis*
 - *Retiring on low income in York Region – John Stapleton, Open Policy Ontario*

UNDERSTANDING LOW INCOME IN YORK REGION

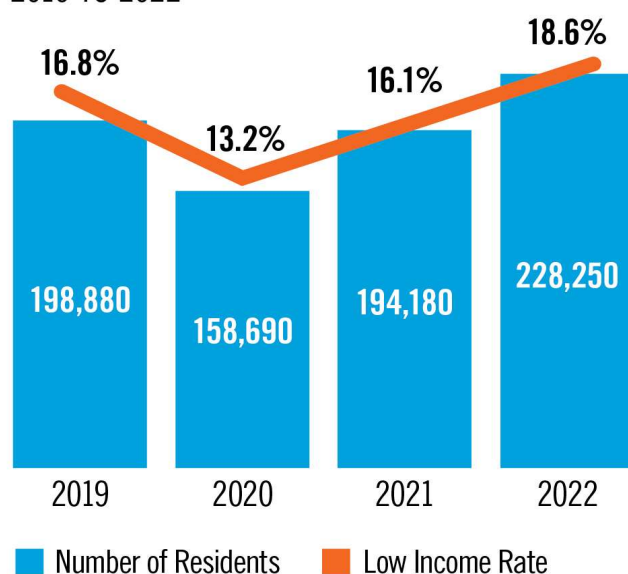
Where Does The Data Come From?



- *Taxfiler (T1FF) – Income of Individuals*
- *Taxfiler (T1FF) - Working Poor and Income Inequality*
- *Longitudinal Administrative Databank (LAD)*
- *Counts*
- *Census, 2021 -Data Tables*

UNDERSTANDING LOW INCOME IN YORK REGION

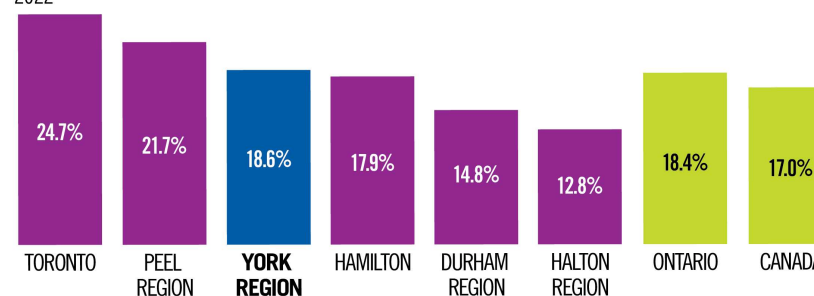
LOW-INCOME TRENDS IN YORK REGION 2019 TO 2022



Source: Statistics Canada, T1 Family File and York Region, Strategies and Partnership calculations

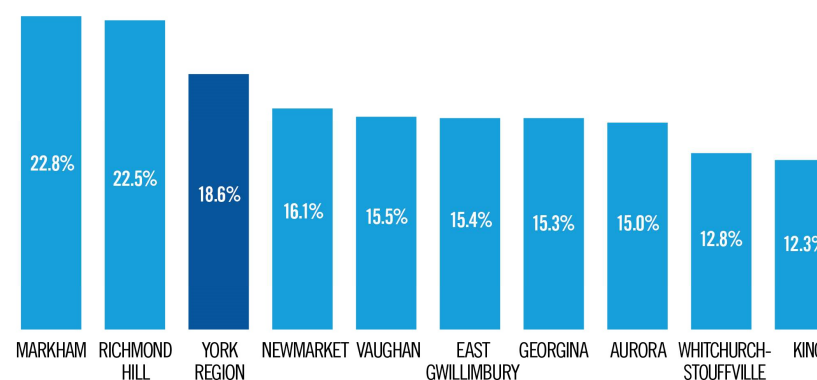
[Low Income Dashboard 2022](#)

LOW INCOME RATE, GTHA, ONTARIO AND CANADA 2022



Source: Statistics Canada, T1 Family File and York Region, Strategies and Partnership Branch calculations

LOW-INCOME RATE IN YORK REGION AND LOCAL MUNICIPALITIES 2022



Source: Statistics Canada, T1 Family File and York Region, Strategies and Partnership calculations

UNDERSTANDING LOW INCOME IN YORK REGION

Data Gaps

1. Impact of COVID-19 on income trends in the 2021 Census
2. Making sense of low-income measures
3. Understanding the dynamics of low income

WRAP UP



- CDP data is a valuable and instrumental resource that informs York Region's service planning, program, and policy development.
- CDP members can collectively explore additional data to fill data gaps.

Thank You

For more information on data presented, please contact:

Valentyn Kliuchnyk, Social Policy Data and Partnerships,
Strategies and Partnerships Branch, Community and Health
Services Department, The Regional Municipality of York

CHSDDataAndPolicy@york.ca