

# Program Orientation

April 8th, 2025

Presented by the CDP Team



## Community Data Program

Enabling communities across Canada to measure and track local well-being



Canadian  
CED Network

## Webinar Poll:

# How comfortable are you using data?

- 1. Very comfortable:** I am a high capacity user, I work with data regularly, data analysis is part of my job description, and I am very comfortable with software like Excel, Beyond2020, and/or GIS.
- 2. Somewhat comfortable:** I am a medium capacity user, I work with data sometimes and can do some analysis, and am somewhat comfortable with software like Excel, Beyond2020 and/or GIS.
- 3. Less comfortable:** I am a modest capacity user, I work with simple data sets, and have a very limited understanding of software like Excel, Beyond 2020, or GIS.

## By the end of the session, you will have a better understanding of:

1. What is the Community Data Program?
2. Census terminology
3. What datasets are available through the program?
4. Finding and using data
5. Tableau dashboards
6. Q&A



**Canadian**  
**CED Network**



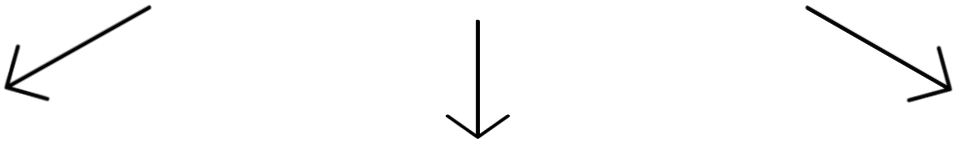
# What is the Community Data Program (CDP)?

- A national initiative with a mandate to enable communities across Canada to measure and track local well-being
- Since 2010, fully funded by members (Canadian public and non-profit organizations with a local service delivery mandate)
- Hosted by the Canadian CED Network since 2019
- Originally established in the 1990s by the Canadian Council on Social Development



# The CDP is delivered via three priority areas

## Priority Areas



Community Data Access	Capacity Building & Training	Networking
Direct access to a data portal containing hundreds of customized community data products	Data analysis tools and training for members only	Connecting community data practitioners across Canada

[communitydata.ca](https://communitydata.ca)



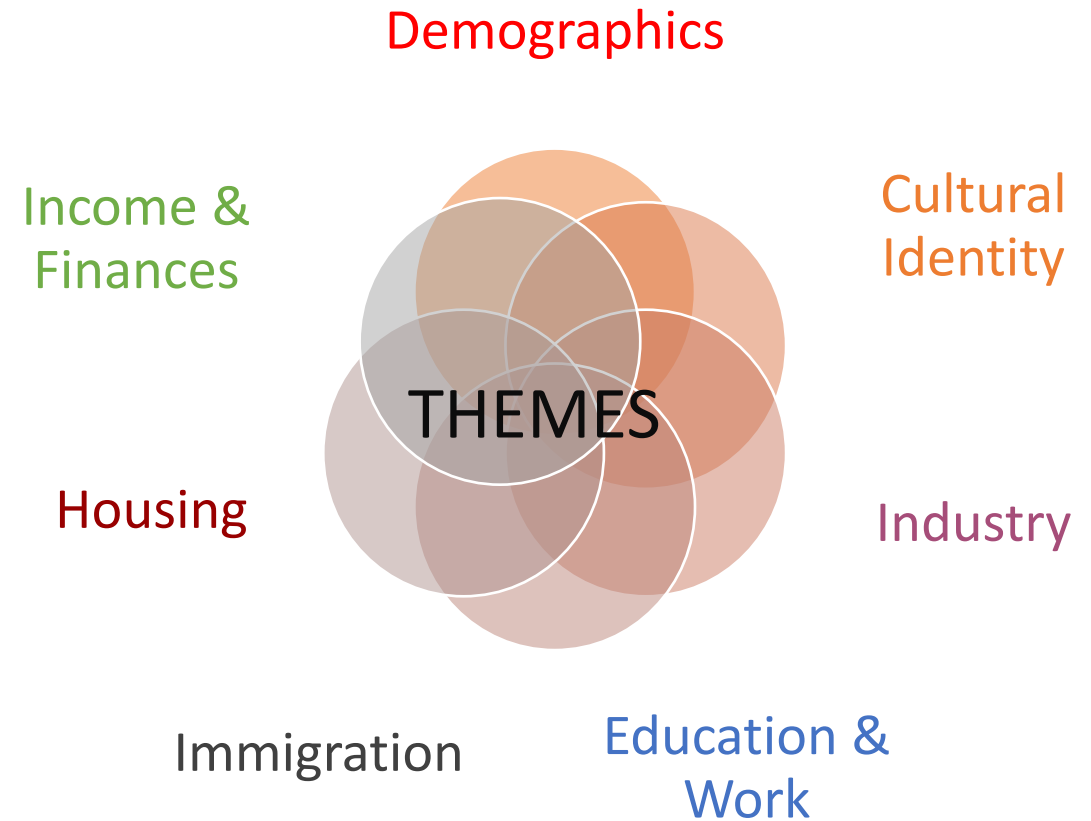
# Community Data Access services

CDP acquires data for the entire country at the smallest possible geographic scale

- Municipal Level (Census Division, Census Subdivision)
- Neighbourhood-level where possible (Dissemination Area, Census Tract)
- Postal codes

Data products are designed based on input from CDP Members

Members have access to all data, not only data about their own community

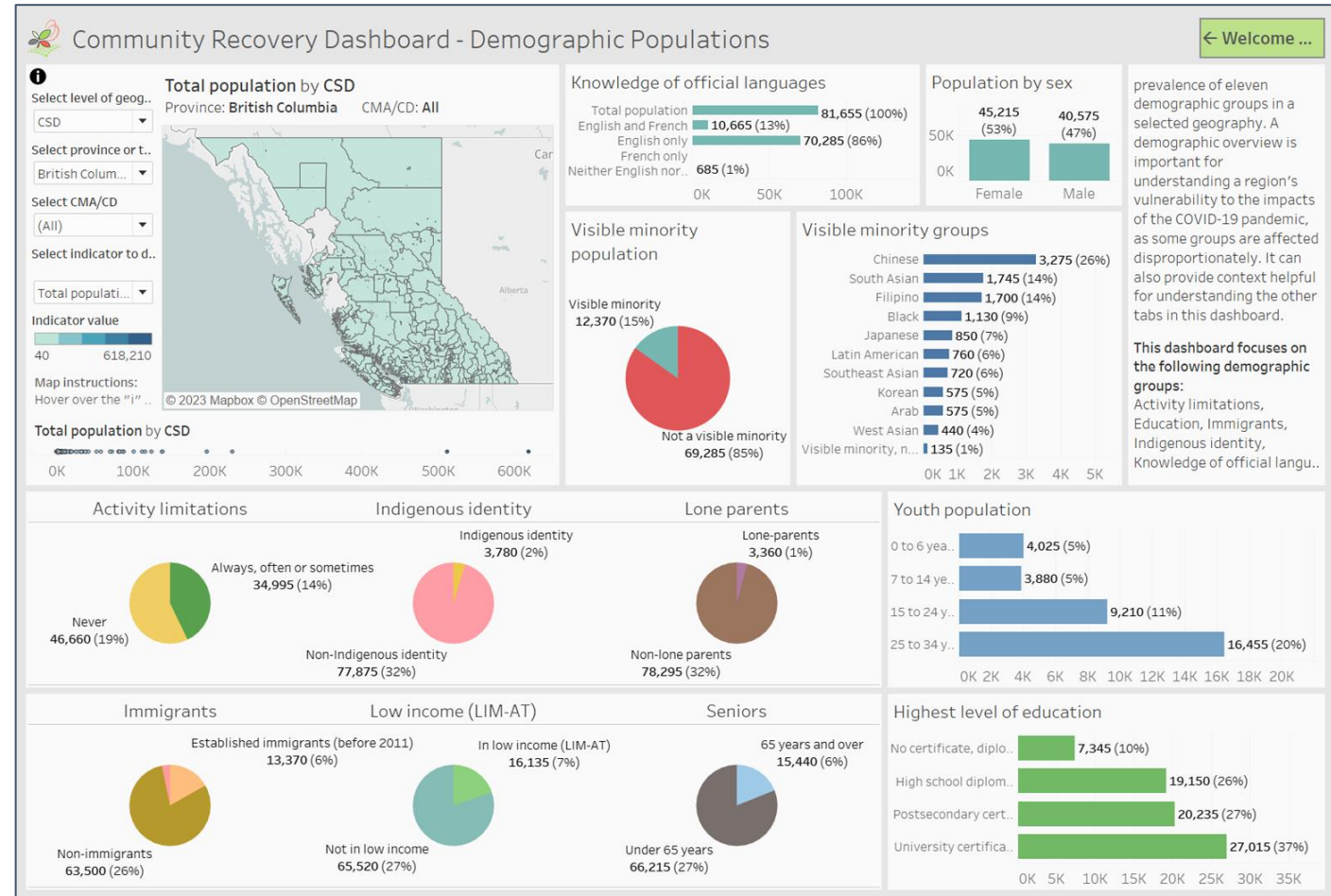


# Training & Capacity Building services

Goal: Build capacity of members to use community data

Support to all skill levels through:

- Email/phone technical support
- Instructional guides and videos
- Downloadable dashboards & infographics
- Virtual Webinars
- In-Person Learning & Networking Event





# Cross-Canada Networking services

- CDP connects 2,500+ individual user across 400+ member organizations nationwide, fostering collaboration through annual meetings, newsletters, data stories, webinars, and learning events.

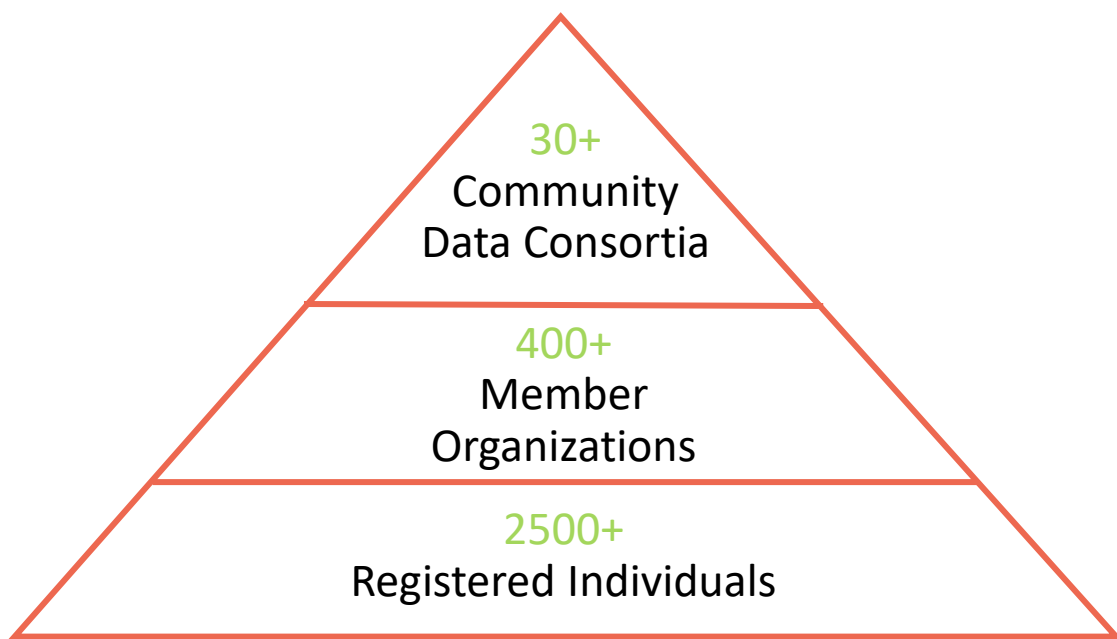




# Who is a member of the CDP?

## Consortium Network

- Covering all of Canada except PEI, Quebec, and the Territories



## Examples of typical Members

- Municipal governments
- Local United Way chapters
- Social planning councils
- Community health centres
- School boards
- Police board
- Immigration and youth services
- Libraries
- Economic development agencies



# How are membership fees structured?

## Consortium Fees

- Fees based on population of consortium catchment area
- Collected annually by CCEDNet
- Leads can develop their own model for recovering consortium fees from members

## Membership Fees

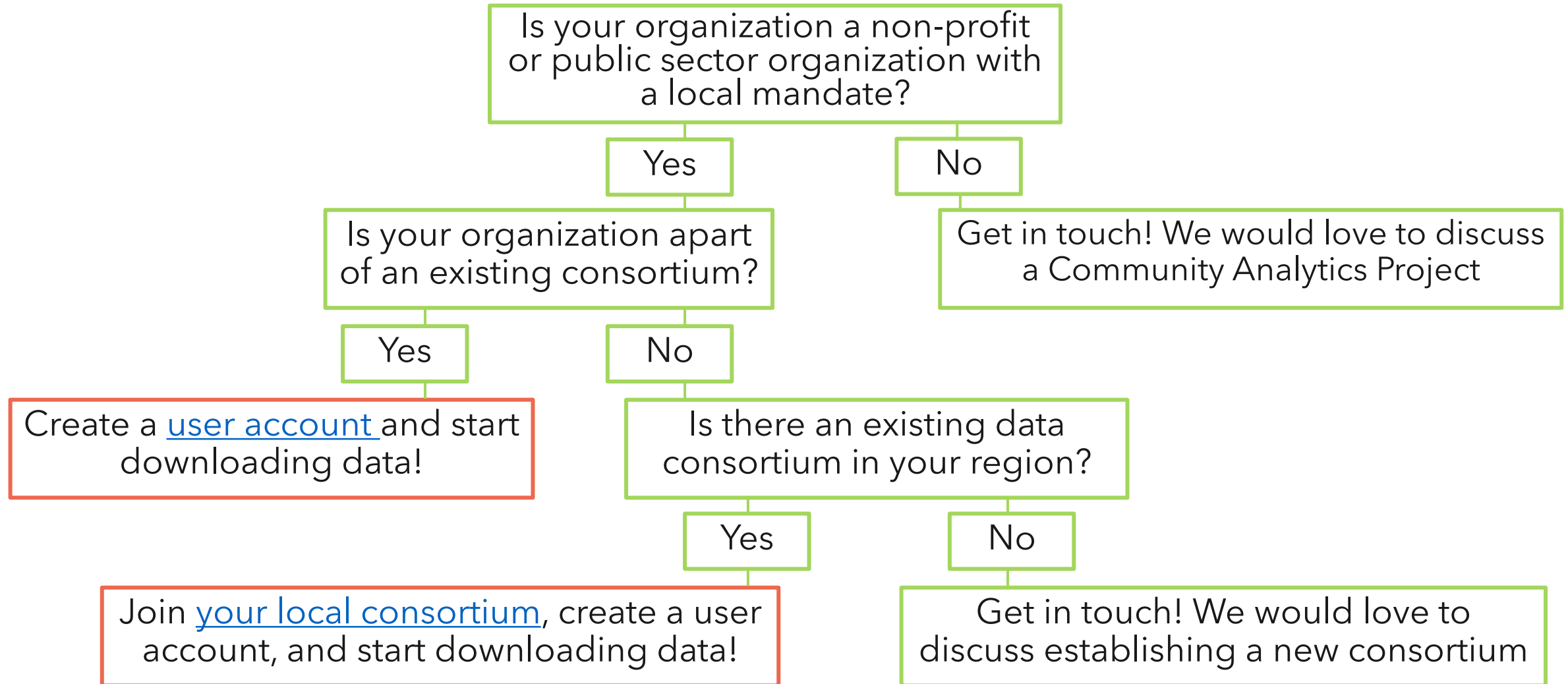
- CCEDNet charges a \$150 annual fee for each member organization
- Members pay the annual fee either directly to CCEDNet or to leads
- Membership fee entitle member organization to an unlimited number of user accounts
- Read more on [Program Governance](#)

## Why use this structure?

- The program was previously funded by the federal government. This funding was cancelled in 2009.
- The consortium model encourages cost sharing among members and allows the CDP to be financially sustainable and offering long-term access to data and technical support.



# How can I access CDP data?



# Community Analytics: A service for non-members

## Typical Services:

- Custom community data analysis
- Community data visualization & Interactive mapping

## Sample Projects

- Interactive Community Map and Dashboard for the Amazon Future Engineers Program, 2020-2023
- Energy Poverty & Equity Explorer, Canadian Urban Sustainability Practitioners, 2018-2020
- Neighbourhood Financial Health Index Mapping and Report, Prosper Canada, 2012-2018



# CDP TOOLS

- 1.The Data Catalogue
- 2.Beyond 20/20
- 3.Tableau
- 4.QGIS

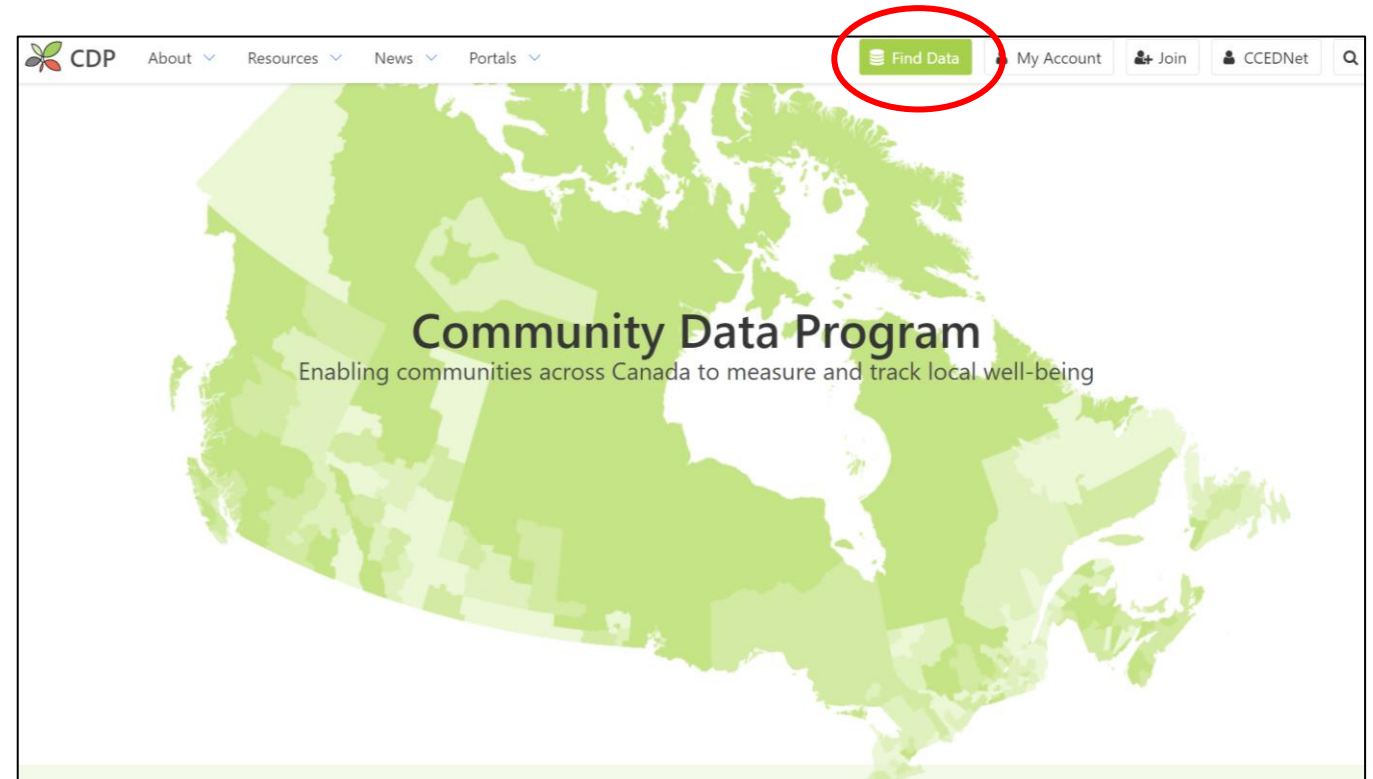


# The Data Catalogue

## What to use it for:

- Accessing data tables and tableau dashboards
- All users with a registered account can download as much data as they like
- Data is typically available in .csv (Excel), .ivt (Beyond 20/20), or .twbx (Tableau) format

To access the data catalogue from the home page click "[find data](#)"



# The Data Catalogue

**Use the search parameters to find the data you are looking for.**

## Find Data

Search our Canadian datasets by applying the filters below

**Topics**  
Choose some options

**Product Group**  
Choose some options

**Data Provider**  
Choose some options

**Product Title**  
  
Add part, or all of the title

**Geographies**  
Choose some options

**Years within data**  
  
i.e. 2006 1976

**Items per page**  
20

Apply Filters

Reset Filters

**Want to learn more  
about how to  
use the catalogue?**

Check out our "[How to Find Data](#)" page



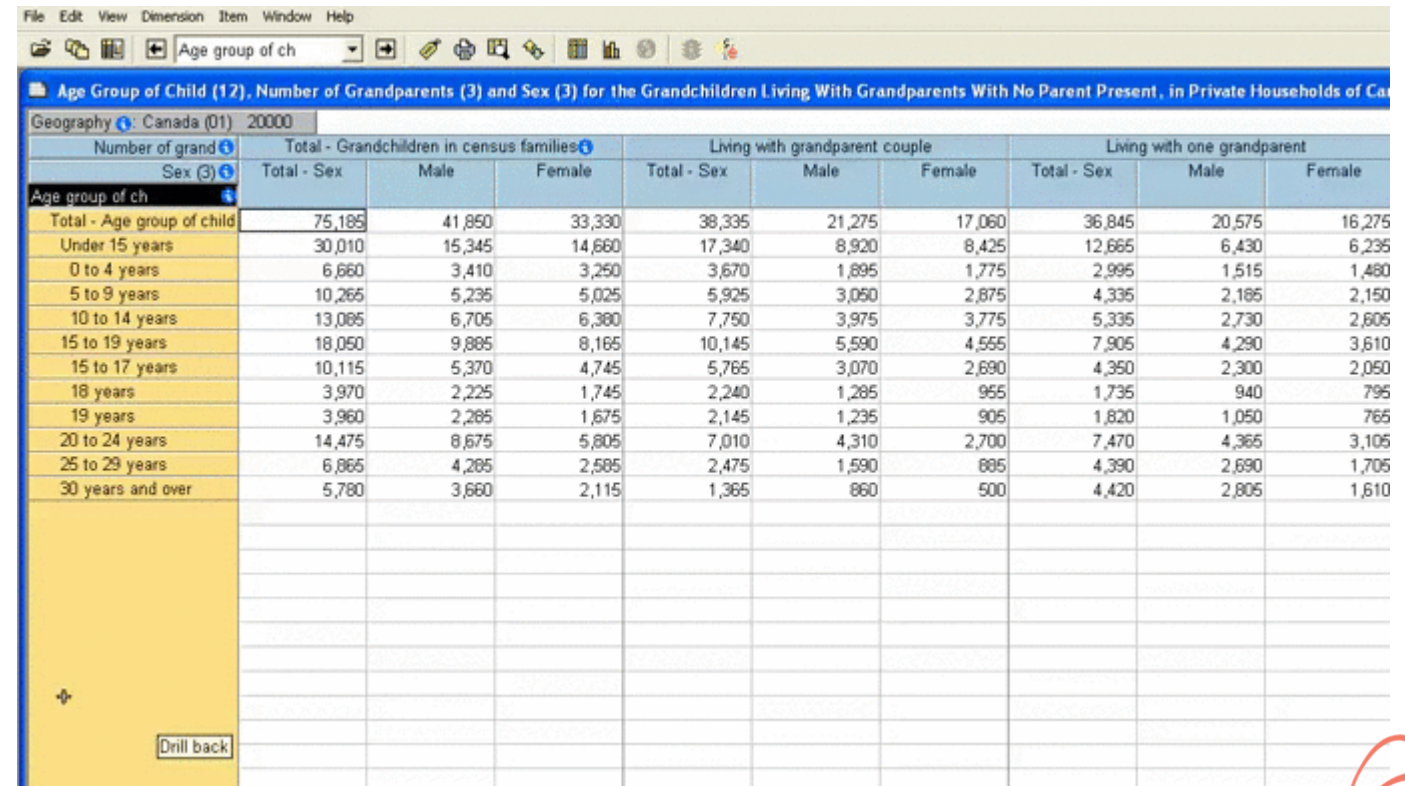


# How can I access data?

## Beyond 20/20

### What to use it for:

- Many tables are only available in .IVT table format
- StatsCan software
- Can be used to manipulate multi-dimensional tables and zero in on the data you need before bringing data into excel



The screenshot shows the StatsCan software interface. The title bar includes 'File', 'Edit', 'View', 'Dimension', 'Item', 'Window', and 'Help'. Below the title bar is a toolbar with various icons. The main window displays a table titled 'Age Group of Child (12), Number of Grandparents (3) and Sex (3) for the Grandchildren Living With Grandparents With No Parent Present, in Private Households of Canada'. The table is organized into columns for 'Number of grand', 'Sex (3)', 'Total - Sex', 'Male', 'Female', and 'Living with grandparent couple'. The rows represent different age groups of children, from 'Total - Age group of child' down to '30 years and over'. A 'Drill back' button is visible at the bottom left of the table area.

Number of grand	Total - Sex	Male	Female	Total - Sex	Male	Female	Total - Sex	Male	Female
Total - Age group of child	75,185	41,850	33,330	38,335	21,275	17,060	36,845	20,575	16,275
Under 15 years	30,010	15,345	14,660	17,340	8,920	8,425	12,665	6,430	6,235
0 to 4 years	6,660	3,410	3,250	3,670	1,895	1,775	2,995	1,515	1,480
5 to 9 years	10,265	5,235	5,025	5,925	3,050	2,875	4,335	2,185	2,150
10 to 14 years	13,085	6,705	6,380	7,750	3,975	3,775	5,335	2,730	2,605
15 to 19 years	18,050	9,885	8,165	10,145	5,590	4,555	7,905	4,290	3,610
15 to 17 years	10,115	5,370	4,745	5,765	3,070	2,690	4,350	2,300	2,050
18 years	3,970	2,225	1,745	2,240	1,285	955	1,735	940	795
19 years	3,960	2,285	1,675	2,145	1,235	905	1,820	1,050	765
20 to 24 years	14,475	8,675	5,805	7,010	4,310	2,700	7,470	4,365	3,105
25 to 29 years	6,865	4,285	2,585	2,475	1,590	885	4,390	2,690	1,705
30 years and over	5,780	3,660	2,115	1,365	860	500	4,420	2,805	1,610



### Strengths:

- ## Weaknesses:

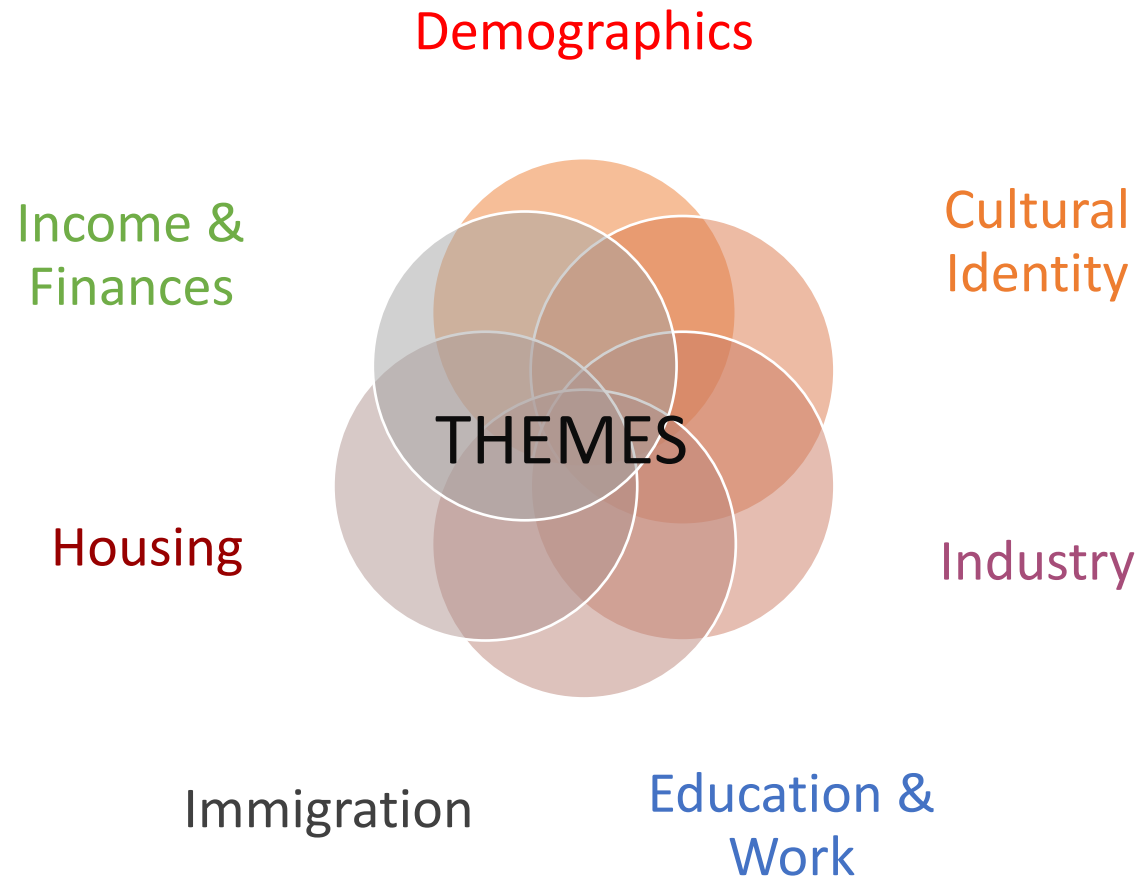
- Data must be extracted into excel – B20/20 not designed for analysis
- Can be intimidating to learn, but program is fairly simple once you get a hang of it!

## Want to learn more about using Beyond 20/20?

Check out our [Beyond 20/20  
Resources](#) on the CDP Website



# What data sets are available through the program?

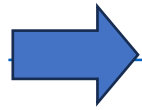


# What data sets are available through the program?

- Smallest possible geographic scale
  - Always sub-provincial
  - Municipal Level (Census Division, Census Subdivision)
  - Neighbourhood-level where possible (Dissemination Area, Census Tract)
- Custom Statistics Canada data
  - Custom cross-tabulations and target group profiles
  - Custom boundaries
- Links to open data
- Data is typically available in
  - .ivt (beyond 20/20 )
  - .csv (excel)
  - .twbx (tableau) format



# Refresher on Statistics Canada Geography



[Link to the Illustrated Glossary page on Statistics Canada website](#)

## **Census Division (CD):**

- An intermediate geographic areas between the province/territory level and the municipality
- In some provinces, CDs correspond with regional district, county, or upper tier municipality

## **Census Subdivision (CSD):**

- Corresponds with municipal boundaries (as determined by provincial/territorial legislation)

## **Dissemination Area (DA):**

- Small, relatively stable geographic unit composed of one or more adjacent dissemination blocks with an average population of 400 to 700

## **Aggregate Dissemination Area (ADA):**

- With populations between 5,000 and 15,000, ADAs are created by grouping existing dissemination geographic areas, including census tracts (CTs), census subdivisions (CSDs) or dissemination areas (DAs). ADA boundaries respect provincial, territorial, census division (CD), census metropolitan area (CMA) and census agglomeration (CA) boundaries.



# *Refresher on Statistics Canada Geography*

## **Census Metropolitan Area (CMA):**

- One or more adjacent municipalities centred on a population centre (known as the core). A CMA must have a total population of at least 100,000, of which 50,000 or more must live in the core

## **Census Agglomeration (CA):**

- One or more adjacent municipalities centred on a population centre (known as the core). A CA must have a core population of at least 10,000.

## **Census Tract (CT):**

- Small, relatively stable geographic areas that usually have a population between 2,500 and 8,000 persons.
- Located in census metropolitan areas (CMAs) and census amalgamations (CAs) with a stable, core population of at least 50,000



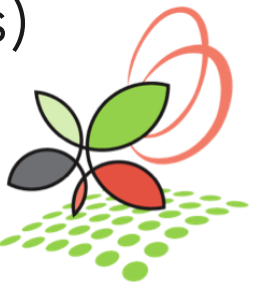


# Highlights of data available through the CDP



# CDP Data Sets

- Census of Population
- [T1FF - taxfiler data](#)
- [Canadian Business Counts](#)
- [Postal Code Conversion File](#)
- [Longitudinal Immigration Database](#)
- [Longitudinal Administrative Databank](#)
- [Building Permits](#)
- [Consumer and mortgage debt data](#) (TransUnion)
- [Estimates of population by age and sex](#) (intercensal, CSD geographies)



# CDP Data Sets

- [Custom order from the Canadian Survey on Disability](#)
- [Canadian Internet Use Survey](#)
- [Canadian Index of Multiple Deprivation](#)
- [Labour Force Survey Estimates at Economic Region and CMA](#)
- [Labour Force Survey: two-year estimates at CD level](#)
- [CMHC Housing Market Information Portal data](#)
- [Modeled estimates of average liquid assets](#)
- [IRCC Permanent and Temporary Residents data](#)
- [Employment Insurance Statistics](#)
- Links to selected open data sources



# CDP Data Sets – Census of Population

## Census of Population

- Standard and custom tables
- Standard and custom geographies
- Every 5 years
- 2-year lag for data production



# 2021 Census Release

- Semi-custom tabulations (standard tables at smaller geographies)
- Custom tabulations
- Target Group Profiles
- Tables at custom geographies
  - Census Profile
  - detailed Age & Gender
  - popular tables like TGPs
- [CDP prepared a Tableau Dashboard for each data release](#)



The infographic is divided into two vertical panels. The left panel is titled '2021 Census of Population Release schedule by theme' and the right panel is titled '2021 Census of Population Release schedule by topic'. Both panels feature a stylized red maple leaf at the top with the text 'Your census. Your community. Your future.' Below the title, a list of release dates and topics is provided. The background of the panels shows a colorful illustration of a Canadian town with houses, trees, and a windmill. At the bottom of each panel are the Statistics Canada logo and the word 'Canada'.

Theme	Topic
<b>February 9, 2022</b> Canada's growing population and where they are living	<b>February 9, 2022</b> Population and dwelling counts
<b>April 27, 2022</b> Canada's shifting demographic profile	<b>April 27, 2022</b> Age Sex at birth and gender Type of dwelling
<b>July 13, 2022</b> Portrait of Canada's families and households Contemporary portrait of Canadian Veterans Income profile of Canadians	<b>July 13, 2022</b> Families, households, and marital status Canadian military experience Income
<b>August 17, 2022</b> Linguistic diversity and use of English and French in Canada	<b>August 17, 2022</b> Language
<b>September 21, 2022</b> First Nations people, Métis and Inuit in Canada Canada's housing portrait	<b>September 21, 2022</b> Indigenous peoples Housing
<b>October 26, 2022</b> Portrait of citizenship and immigration in Canada Ethnocultural and religious composition of the population Mobility and migration	<b>October 26, 2022</b> Immigration, place of birth, and citizenship Ethnocultural and religious diversity Mobility and migration
<b>November 30, 2022</b> Education in Canada The changing dynamics of the Canadian labour force and how people get to work Instruction in the official minority language	<b>November 30, 2022</b> Education Labour Language of work Commuting Instruction in the official minority language



# CDP Data Sets – Census of Population

- [Community Poverty Project tables](#)
  - Tables cross-tabulated with all low-income lines (LICO, LIM, MBM)
  - Themes: depth of poverty, mode of transportation, housing affordability, demographics
- [Core Housing Need](#)
  - Cross-tabulated by age, household type, aboriginal status
- [Target Group Profiles](#)
  - Similar to [Census Profile](#)
  - e.g., low-income population, various demographic groups
- Various data tables
  - [NEET \(Not in Employment, Education or Training\) table](#)
  - [Income and sources of income](#)
  - [Occupation](#) or [Industry](#) classification



# CDP Data Sets – T1 Family File (Taxfiler)

- Annual data source
- Two-year lag in publication (e.g., 2020 data coming out in 2020)
- Postal Geographies
  - Forward Sortation Areas, Postal Cities, Rural Postal Codes,
- Census Geographies
  - Census Divisions, Census Metropolitan Areas, Census Agglomerations, Census Tracts
  - Census Subdivisions now standard geography for T1FF, but has some accuracy issues due to imperfect conversion from postal geography





# CDP data sets - T1 Family File (Taxfiler)

- Income of Individuals
- Income of Families
- Income of Seniors

Counts, age and income of taxfilers, dependents, families by type and number of children, sources of income, low-income status

- custom tabulations from the Individuals, Families and Seniors tables
- Financial Data and Charitable Donations
- Migration Estimates
- Working Poor and Income Inequality tables (custom)

- [Technical Reference Guide - Families, Individuals and Seniors](#)
- [Technical Reference Guide - Financial Data and Charitable Donations](#)



# CDP data sets – T1 Family File (Taxfiler)

- Working Poor – by age (0-64, 18-64, 65+)
  - has an after-tax income below the Low Income Measure
  - has earnings of at least \$3000 a year (threshold for Working Income Tax Benefit)
  - is not a student
  - lives independently (non-institutional population).
- Income Inequality
  - after-tax income threshold upper limits
  - aggregate income by decile



# Live Demonstration



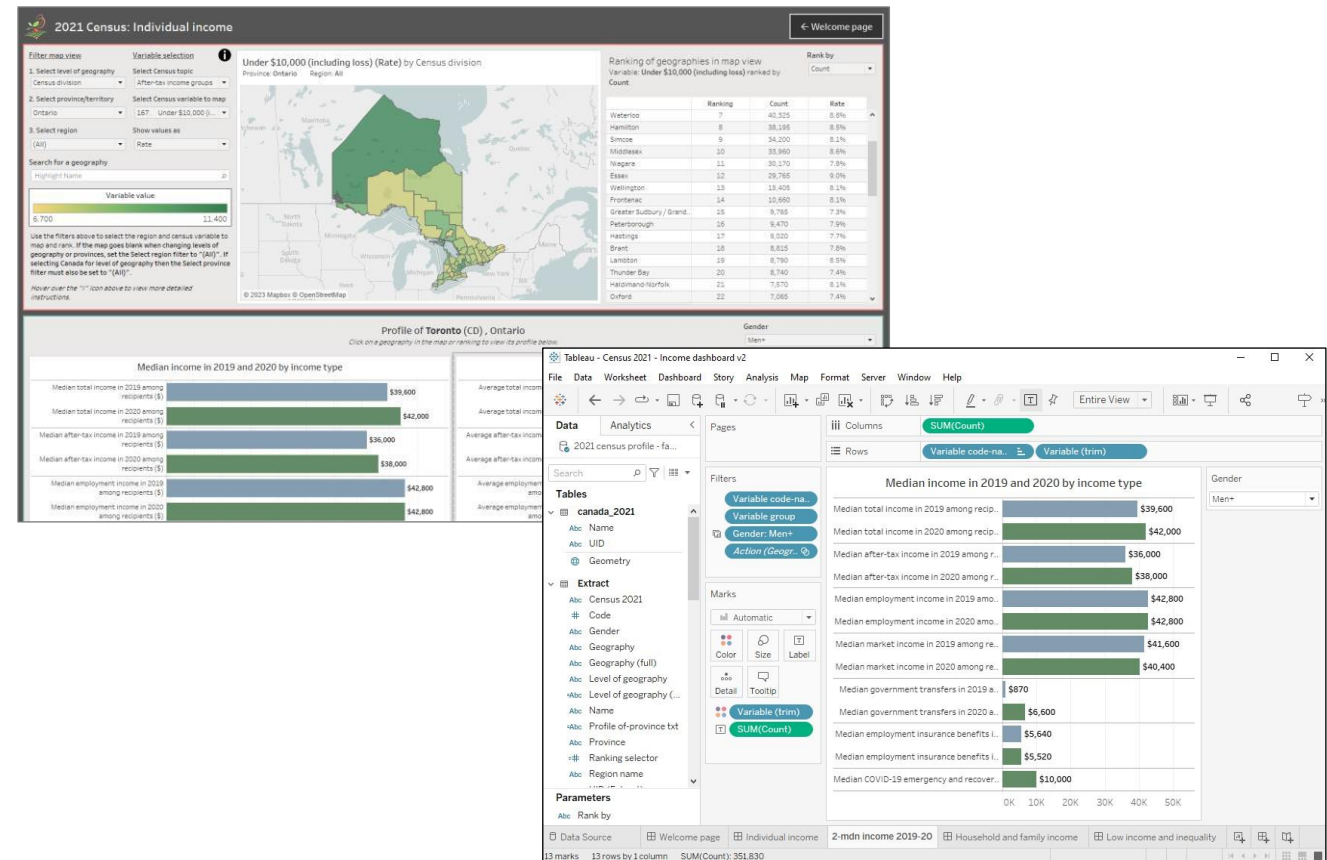
# Intro to Tableau

## What is it?:

- Data visualization and analysis platform
- Software for building and sharing interactive infographics and data tools (dashboards)

## Tableau for CDP members:

- Goal of reaching “Modest Capacity Users”
- Dashboards cover all of Canada at varying levels of geography
- Tableau training and support



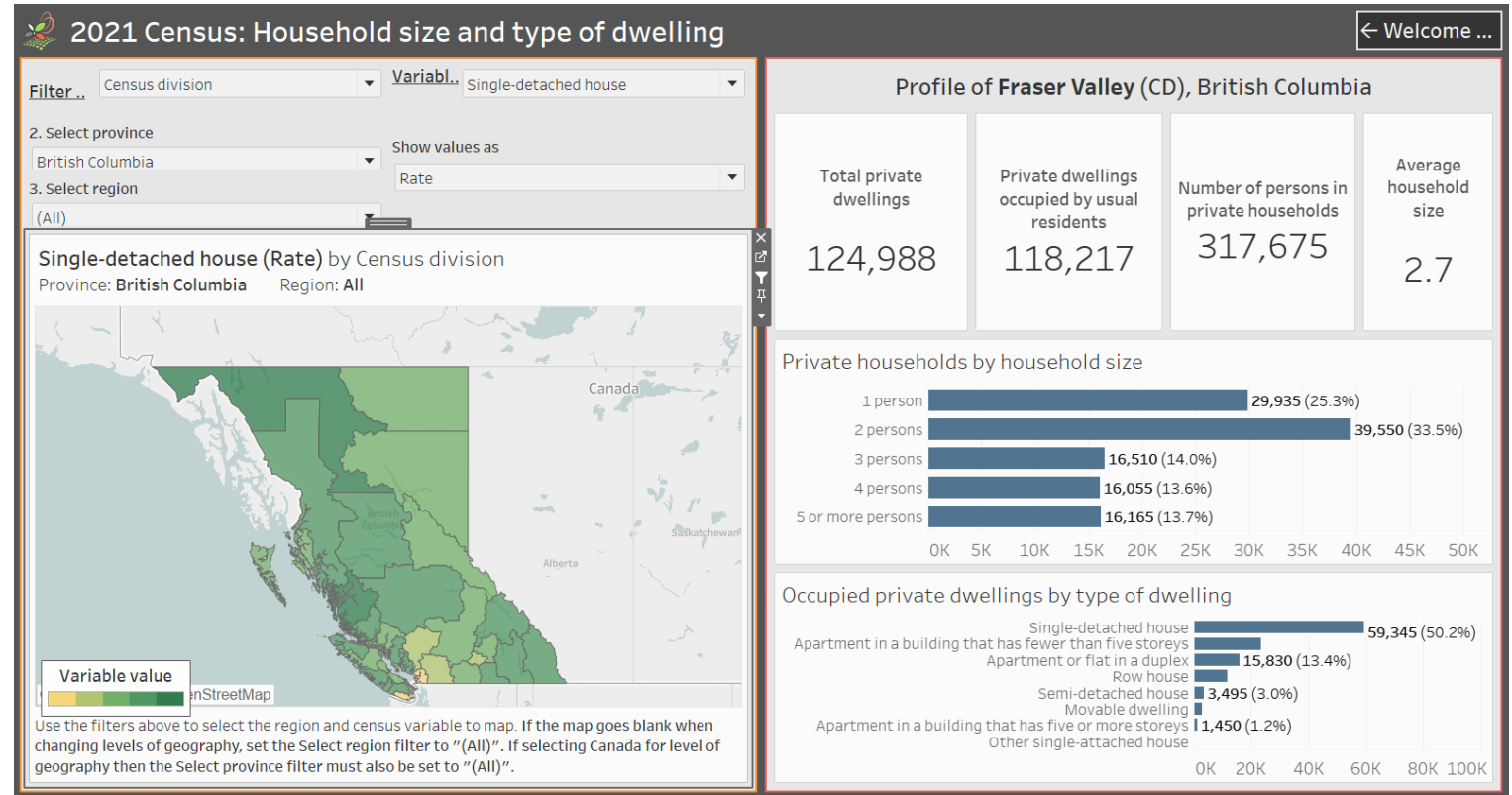
# Tableau Dashboard Strengths & Weaknesses

## Strengths:

- Easy to find data through drop down menus
- Can easily conduct a multi-dimensional analysis, i.e. intersectionality of different demographic groups, incomes, tenures etc.
- Appealing and intuitive graphics and design


## Weaknesses:

- Must download Tableau Reader - many organizations require IT permission
- Tableau dashboards designed with varying degrees of complexity.



# Finding Tableau dashboards in the catalogue

- There are currently over 40 dashboards available to CDP users
- To find dashboards:
  - [Interactive Infographics and Dashboards Portal](#)
  - [Catalogue - Data analysis and visualization tools product group](#)
- Dashboards are all in Packaged Workbook (.twbx) format, openable in Tableau Reader

 CDP

[About](#) [Resources](#) [News](#) [Portals](#)

[Find Data](#) [My account](#) [Join](#) [Log out](#) [CCEDNet](#)

## Find Data

Search our Canadian datasets by applying the filters below

Topics  
Choose some options

Product group  
Data analysis and visualization tools x

Data provider  
Choose some options

Title  
Add part, or all of the title

Geographies  
Choose some options

Years within data  
I.e. 2006-1976

Items per page  
20

[Apply Filters](#) [Reset Filters](#)

Home / Find Data

Displaying 1 - 20 of 30 Products, sorted by post date

Title	Geographies	Years within data	Posted
<b>Longitudinal Immigration Database ICARE Dashboard, 2012-2019</b> PRODUCT GROUP: Data analysis and visualization tools TOPIC: Data tools , TOPIC: Cultural identity , TOPIC: Immigration , TOPIC: Housing , TOPIC: Mobility , TOPIC: Finances , TOPIC: Taxfilers , TOPIC: Income , TOPIC: Individual Income , TOPIC: Source of Income	Province and Territory, Census Subdivision, Census Division, Custom Geographies	2012, 2013, 2014, 2015, 2016, 2017, 2018, 2019	03/28/2023
<b>Village of 100 Dashboard, 2021</b> PRODUCT GROUP: Data analysis and visualization tools TOPIC: Data tools , TOPIC: Cultural identity , TOPIC: Aboriginal Peoples , TOPIC: Immigration , TOPIC: Language , TOPIC: Visible minority , TOPIC: Demographics , TOPIC: Age, Sex and Population , TOPIC: Marital Status , TOPIC: Housing , TOPIC: Tenure and Vacancy , TOPIC: Work , TOPIC: Labour Force , TOPIC: Income , TOPIC: Low income	Province and Territory, Census Subdivision, Census Metropolitan Area, Census Division, Census Agglomeration	2021	02/28/2023

## Interactive Infographics and Dashboards

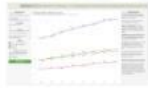
Dashboards:  
Installing Tableau Reader  
Using Tableau Reader

This series of interactive dashboards, built using Tableau software, allows users to easily view and interact with data from the Community Data Program catalogue. Each dashboard explores a different theme and provides opportunities for users to visualize and analyze data at geographies of their choice. The dashboards are designed to be intuitive for users at all levels of data knowledge, and useable on both PC and Mac computers.

The software required to use these dashboards is **Tableau Reader**, which can be downloaded [here](#) for free. For more detailed instructions on installing and using Tableau Reader, [click here](#).

### Dashboards


#### Longitudinal Immigration Database ICARE Dashboard, 2012-2019



The Longitudinal Immigration Database ICARE Dashboard presents data from the IMDB ICARE tables T1 and T2 in a series of interactive charts. Data on immigrant taxfiler mobility and economic outcomes are compared with settlement service delivery, admission categories and world areas of birth. The dashboard includes time series showing data on immigrant taxfiler landing groups over time, and charts showing data for individual tax years.

[Click here to download this dashboard from the catalogue.](#)


#### Village of 100 Dashboard, 2021



This interactive Tableau dashboard presents a selection of census indicators for a chosen geography, as if it were a village of 100 people. This is a new version of the previous Village of 100 dashboard, updated with 2021 Census data.

[Click here to download this dashboard from the catalogue.](#)

#### Housing Dashboard - Version 1



The Housing Dashboard is an interactive data storytelling tool, helping users to understand and tell stories about housing in their communities. The dashboard guides users through a selection of housing indicators from sources including Statistics Canada and CMHC, offering questions and relevant



# Demo:

## Immigration and Housing Dashboard, 2021

### Data Source:

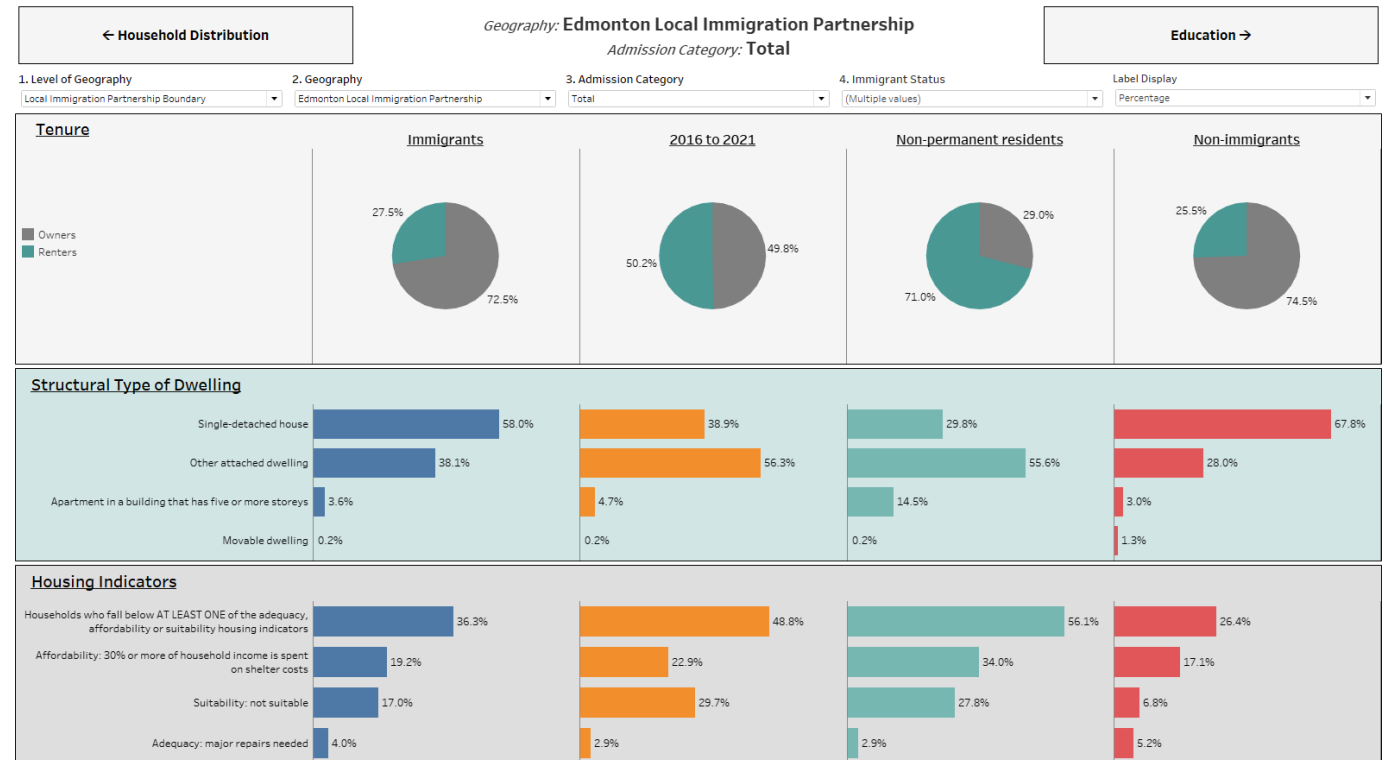
- Selected household and housing characteristics (102), Admission category and applicant type (13), Period of immigration (16) and Gender (3) for the Population in Private Households, 2021 Census - 25% Sample Data

### Purpose:

- Collab with NLS to inform on many topics (mainly housing) across multiple immigrant statuses.

### Reminder:

- Immigration dashboards typically still have data available for the non-immigrant and/or total population as well.





## Want to learn more about using Tableau?

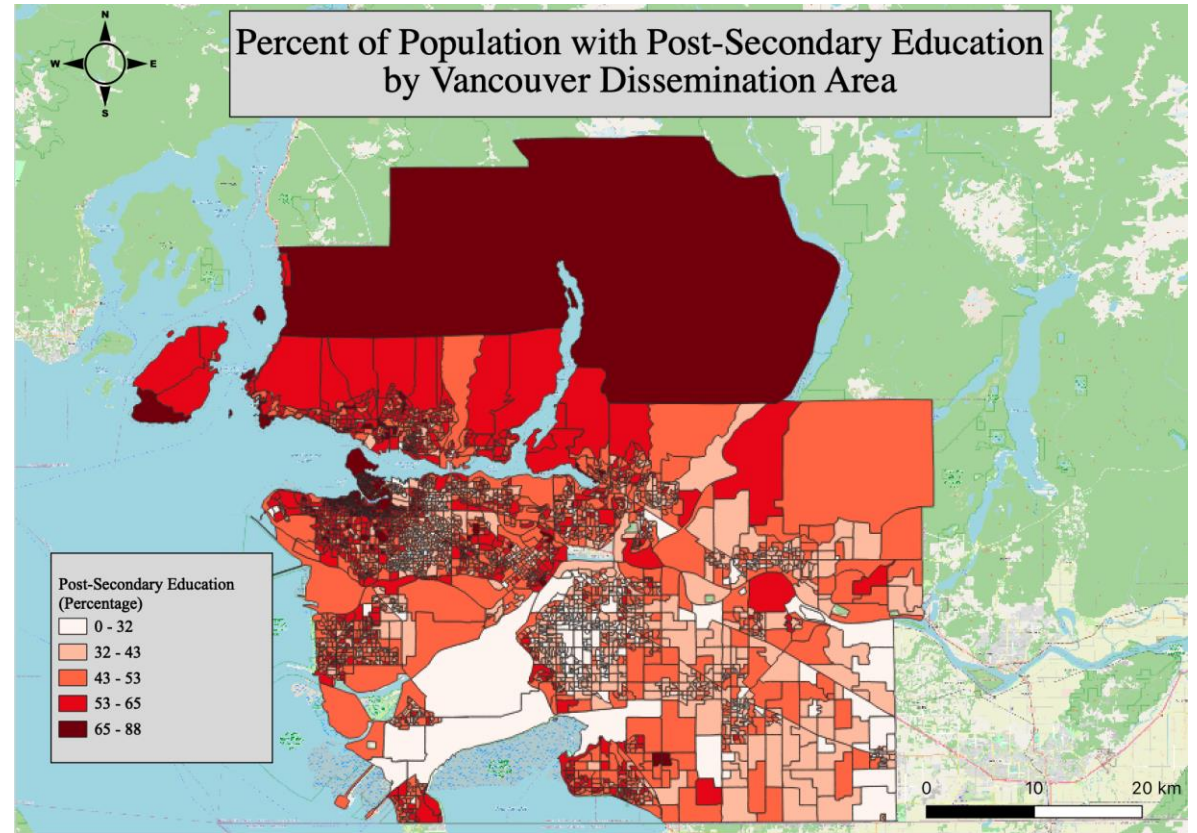
Check out our [Infographics and Dashboard Portal](#), and previous webinar on using [Tableau for data visualization](#)



# QGIS

## What to use it for:

- Open-source mapping software
- Most CDP data can be mapped
- Census data is spatial data –  
Must be joined to a  
georeferenced file (shapefile) to  
map



## How to map Census data:

### 1. Get Your Census Numbers (The Table):

- Export the stats you need (population, income, etc.) into a simple table (like a .csv) using Beyond 20/20. (Make sure you have the relevant GeoUIDs in the export e.g., CSDUID if mapping at the CSD level)

### 2. Get Your Map Boundaries:

- Download the corresponding map boundary file from Statistics Canada (.shp format).

### 3. Load Both into QGIS:

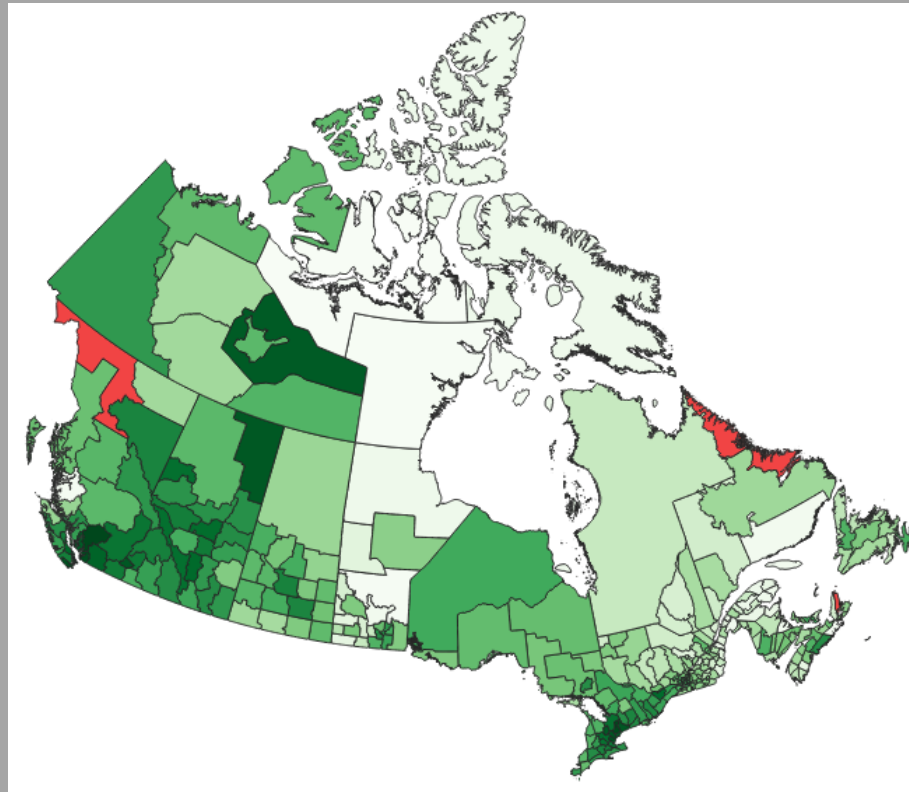
- Add the boundary file (.shp) as a Vector Layer.
- Add your data table (.csv) as a Delimited Text Layer (make sure you assign data types).

### 4. Join the Table Data TO Map Shapes:

- Use QGIS's Join feature (in the map layer's properties) and join on the GeoUID column of each dataset

### 5. Visualize Your Data:

- Success! Your map shapes are now linked to your Census data.
- Use Symbology options (colors, gradients) to create thematic maps (e.g., colour-code areas by median shelter costs). Add labels if needed.



The distribution of median shelter costs across Canada by census division.

[Source data: Census 2021](#)



# QGIS

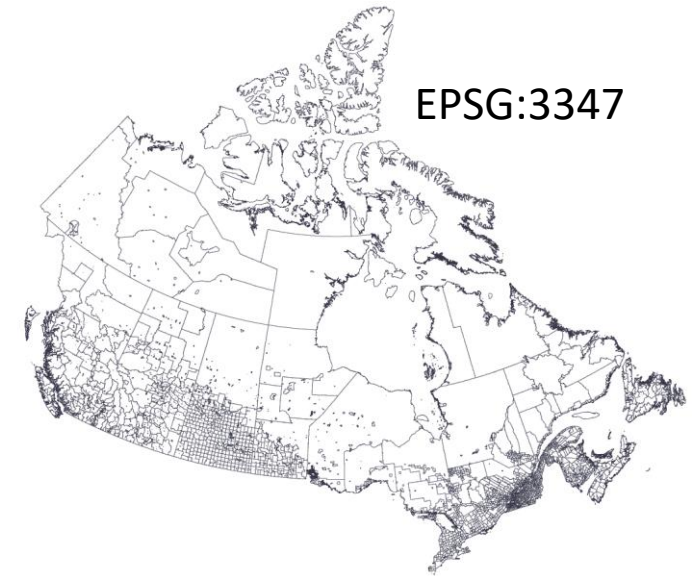
## Tips:

Use [Mapshaper.org](https://www.mapshaper.org) to:

- Reduce file sizes using simplify
  - CSD file size goes from ~152mb to ~6mb over 25x smaller!
- Reproject if necessary
  - Using a consistent projection for different map layers is crucial

Use Python (if you have capacity) to:

- Perform geospatial analysis much faster



# QGIS

## **Want to learn more about using CDP data in QGIS?**

Check out our tutorial on [bringing data from  
the catalogue into QGIS](#)

Need a spatial data file? Visit the [StatsCan  
Website](#) to download a boundary file



# Want to learn more?

Visit our [webinar archive page](#)

Recently added recordings include:

- [Refresher on the Community Data Program's Tableau Infographics and Dashboards](#)
- [Beyond 20/20 Orientation with Q&A](#)
- [Canadian Business Counts](#)
- [Modelled Market Basket Measure Poverty Rates](#)

Working on a project that uses CDP data?  
Want to share your work in a webinar format?  
Let us know!







YOU ARE INVITED TO THE CDP'S  
FIRST ANNUAL IN-PERSON



## COMMUNITY DATA LEARNING & NETWORKING EVENT!



The Prince Arthur Waterfront Hotel  
17 North Cumberland Street, Thunder Bay, Ontario

\*May 7th event location: The Charterelle  
206 Park Ave, Thunder Bay, ON



No event registration fees charged to members.  
Participants are responsible for their own travel  
and accommodation costs.

Space will be limited to a maximum of 50 persons\*

\*registration is on a first-come-first serve basis, with priority given to community  
data consortium lead organizations.



NORTHERN  
POLICY INSTITUTE

INSTITUT DES POLITIQUES  
DU NORD

Gweddong Ackomenjigwin teg  
b. AGZ-der-ri P'P'P'P' AGZ-der-ri  
Institut d'Politik di Nor  
Aen vavnd nor Lee lway Lo koonpayeen



Community Data Program

Enabling communities across Canada to measure and track local well-being

# Join us for our two-day Community Data Training Retreat May 8-9, 2025 in scenic Thunder Bay, Ontario.

This event is your chance to connect,  
learn, and gain invaluable insights  
into community data initiatives.

[https://communitydata.ca/Learning  
and Networking](https://communitydata.ca/Learning_and_Networking)

**Thanks for listening!**  
**Contact us any time with questions or  
requests about community data**

[www.communitydata.ca](http://www.communitydata.ca)

[information@communitydata.ca](mailto:information@communitydata.ca)



**Community Data Program**

Enabling communities across Canada to measure and track local well-being