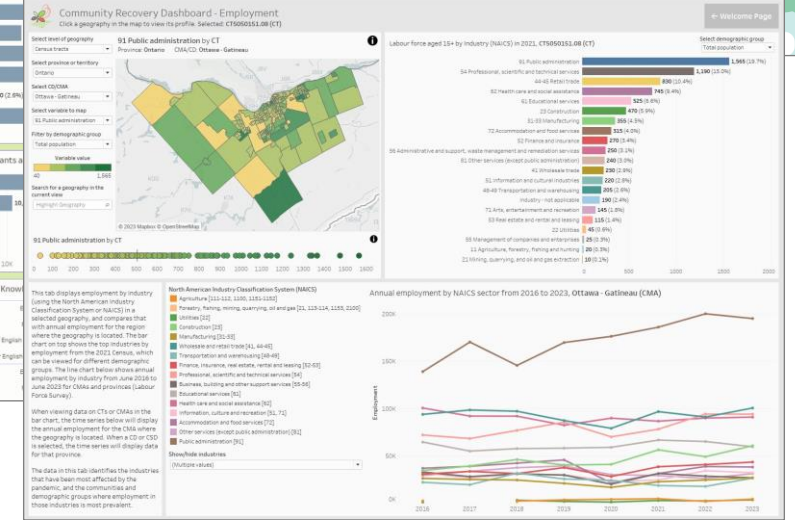
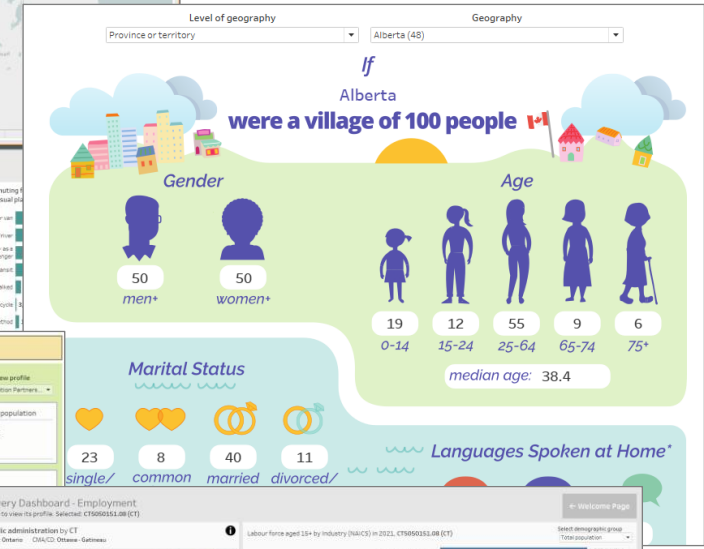
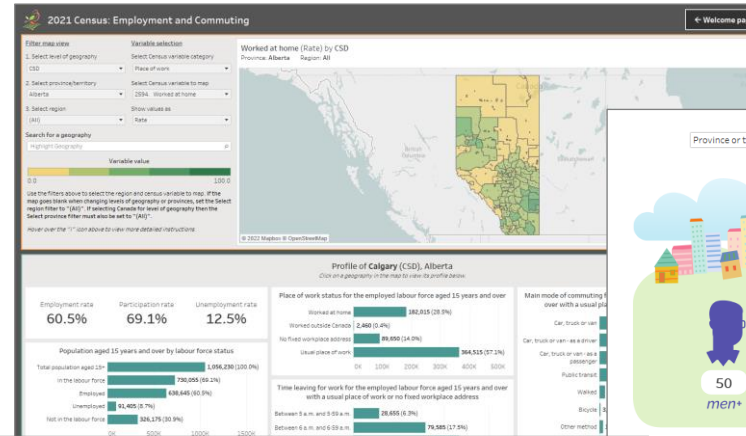


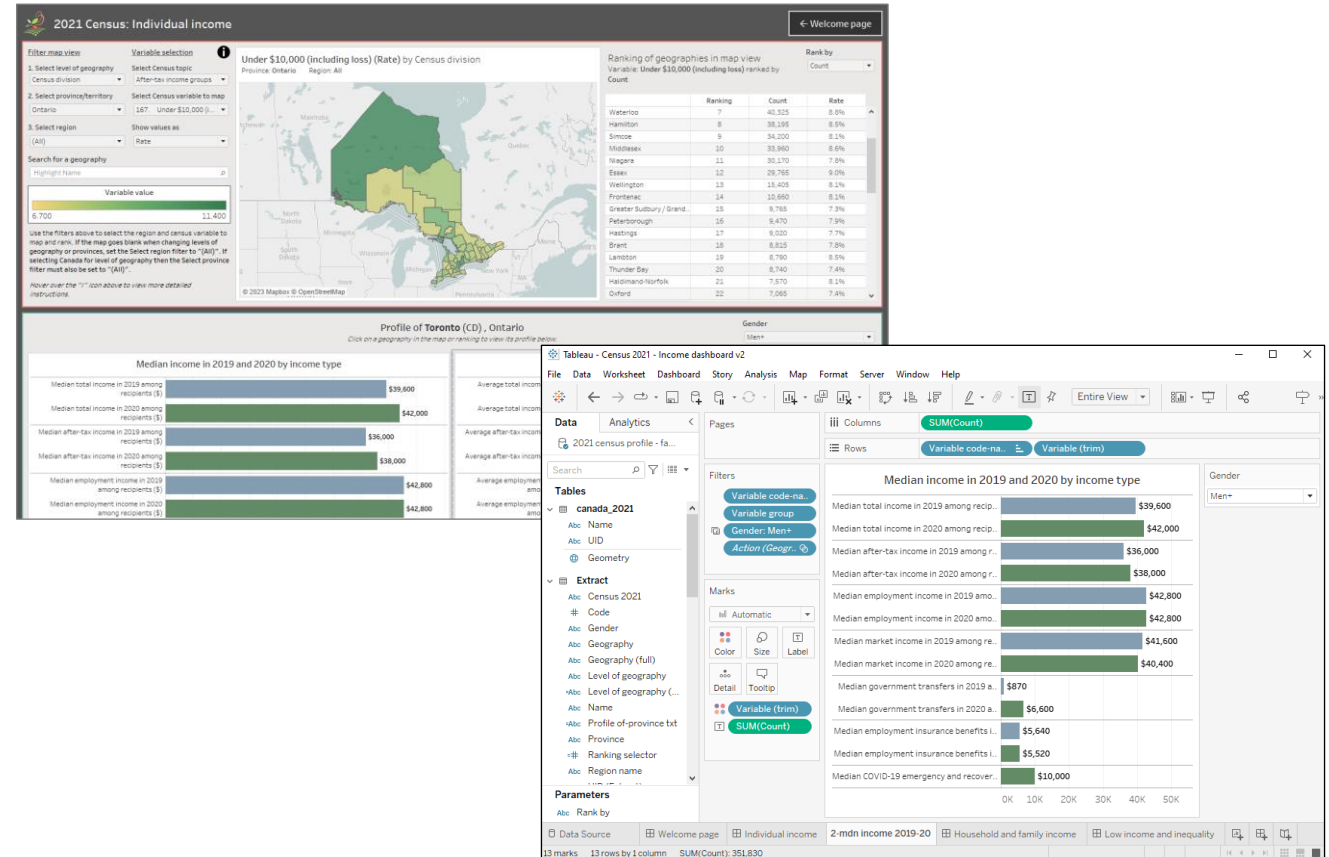
Orientation to the Community Data Program's Tableau Infographics and Dashboards

By Jamie Carrick



What is Tableau?

- Data visualization and analysis platform
- Software for building and sharing interactive infographics and data tools (dashboards)



Versions of Tableau

Tableau Desktop

- Premium Tableau software used to create dashboards
- Requires annual or monthly subscription fee (“Creator” subscription)
- Available at a discount for non-profit organizations through [TechSoup](#)
- Includes Tableau Prep

Tableau Public

- Free software for creating dashboards, sharing and embedding online
- Offers most of the functionality of Desktop with a few key limitations:
 - Limit on number of rows in data sources
 - Dashboards must be saved to the cloud where they become publicly available. Anyone with the link can view and share it.

Tableau Reader

- Free software used to open and interact with Tableau Dashboards
- Opens Tableau Packaged Workbooks (.twbx files)
- Can’t be used to create or edit dashboards
- **How we intend for CDP members to use our dashboards**

Other versions of Tableau for sharing dashboards:

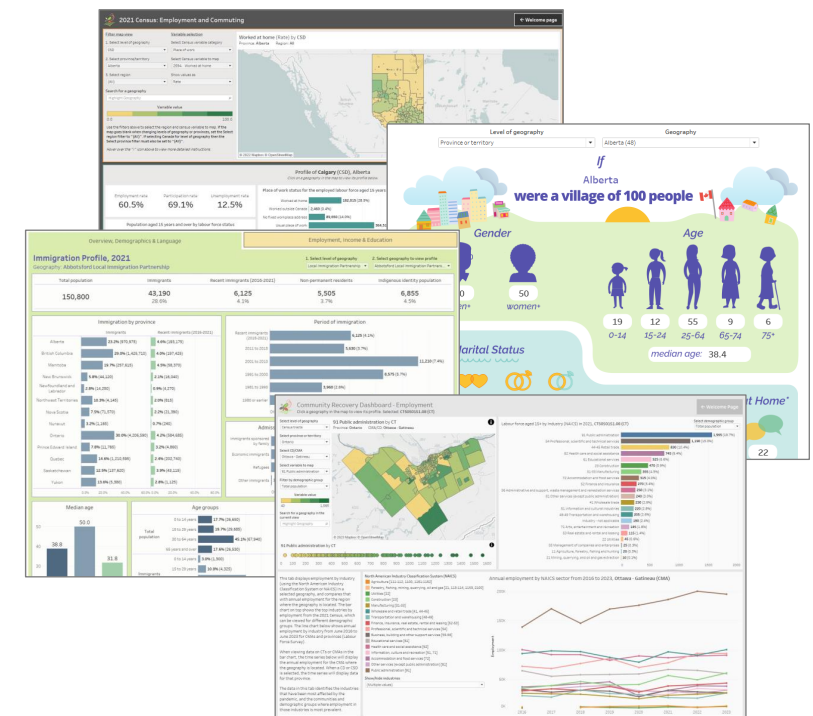
- Tableau Cloud
 - Mainly for organizations sharing dashboards internally
 - Monthly or annual fee
 - Only registered users with “Viewer” subscription can view dashboards on Tableau Cloud
- Tableau Embedded Analytics
 - Significant cost, dependent on factors such as number of users
 - Secure, customizable embedding with support from Tableau

Tableau for CDP members

- Creating Tableau Dashboards for CDP members, with goal of reaching “Modest Capacity Users”
- Growing library of dashboards available in the CDP catalogue
- Dashboards present data from the Census and other sources, covering all of Canada at varying levels of geography
- Tableau training and support for CDP members

CDP's dashboard library

- Over 40 dashboards currently available in the catalogue
- Interactive Infographics
 - Immigration Profile Dashboard, 2021
 - Village of 100 Dashboard, 2021
- Themed Dashboards
 - Community Recovery Dashboard
 - Housing Dashboard
- Analytical dashboards visualizing CDP datasets
 - IMDB ICARE Dashboard
 - 2021 Census Profile Dashboards
- And more..



Infographics and Dashboards Portal

CDP About Resources News Portals Find Data Join Log In CCEDNet

Infographics and Dashboards Portal

Home / Infographics and Dashboards Portal

This library of dashboards, built using Tableau software, allows users to easily interact with data from the Community Data Program catalogue. Each dashboard explores a different theme and provides opportunities for users to access data at geographies of their choice.

Population in low income (LIM-AT) (%)
by census division, 2021

Select a variable to map
Population in low income (LIM-AT) (%)

View a province
(All)

4.0 34.8

© 2024 Mapbox © OpenStreetMap Data source: Statistics Canada, Census Profile, 2021

Required Software

Tableau Reader is a free software which can be used to open any of the interactive dashboards and infographics available to Community Data Program members. [Tableau Reader can be downloaded for free here.](#)

For more detailed instructions on installing and using Tableau Reader, see the [Instructions](#) section below.

If you have any questions about our dashboards, email us at information@communitydata.ca.

Dashboards

Theme Dashboards

Immigration Profile Dashboard, 2021

The Immigration Profile Dashboard, 2021 displays a profile of the immigrant population in a selected community, using data from the 2021 Census. The dashboard provides an overview of immigration and looks at demographics, language, education, employment and income for the immigrant and recent immigrant populations.

The data in this dashboard covers all of Canada at the following levels of geography: Canada, Provinces and Territories (PR), Census Divisions (CD), Census Subdivisions (CSD), and Local Immigration Partnership (LIP) boundaries.

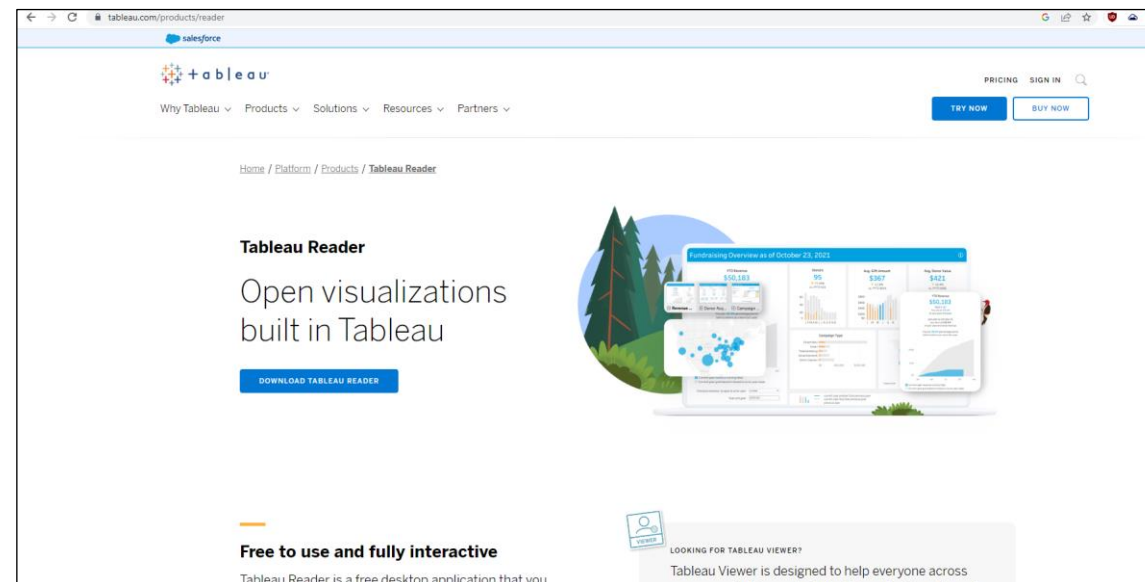
[Click here to download this dashboard from the catalogue.](#)

Community Recovery Dashboard, Version 4

How to use CDP Tableau Dashboards

Installing Tableau Reader

- Tableau Reader is all you need to access and use our Tableau data products
- Free software
- Tableau Reader can be downloaded here:
<https://www.tableau.com/products/reader>



How to use CDP Tableau Dashboards

Finding Tableau dashboards in the CDP catalogue

- There are currently over 40 dashboards available to CDP users
- To find dashboards:
 - [Interactive Infographics and Dashboards Portal](#)
 - [Catalogue – Data analysis and visualization tools](#) product group
- Dashboards are all in Packaged Workbook (.twbx) format, openable in Tableau Reader

Find Data

Search our Canadian datasets by applying the filters below

Topics: Choose some options | Product group: Data analysis and visualization tools | Data provider: Choose some options

Title: | Geographies: Choose some options | Years within data: | Items per page: 20

Add part, or all of the site

Apply Filters | Reset Filters

Home / Find Data

Displaying 1 - 20 of 30 Products, sorted by post date

Title	Geographies	Years within data	Posted
Longitudinal Immigration Database ICARE Dashboard, 2012-2019 PRODUCT GROUP: Data analysis and visualization tools TOPIC: Data tools , TOPIC: Cultural Identity , TOPIC: Immigration , TOPIC: Housing , TOPIC: Mobility , TOPIC: Finances , TOPIC: Taxfilers , TOPIC: Income , TOPIC: Individual Income , TOPIC: Source of Income	Province and Territory, Census Subdivision, Census Division, Custom Geographies	2012, 2013, 2014, 2015, 2016, 2017, 2018, 2019	03/28/2023
Village of 100 Dashboard, 2021 PRODUCT GROUP: Data analysis and visualization tools TOPIC: Data tools , TOPIC: Cultural Identity , TOPIC: Aboriginal Peoples , TOPIC: Immigration , TOPIC: Language , TOPIC: Visible minority , TOPIC: Demographics , TOPIC: Age, Sex and Population , TOPIC: Marital Status , TOPIC: Housing , TOPIC: Tenure and Vacancy , TOPIC: Work , TOPIC: Labour Force , TOPIC: Income , TOPIC: Low Income	Province and Territory, Census Subdivision, Census Metropolitan Area, Census Division, Census Agglomeration	2021	02/28/2023

Interactive Infographics and Dashboards

Dashboards

Installing Tableau Reader
Using Tableau Reader

This series of interactive dashboards, built using Tableau software, allows users to easily view and interact with data from the Community Data Program catalogue. Each dashboard explores a different theme and provides opportunities for users to visualize and analyze data at geographies of their choice. The dashboards are designed to be intuitive for users at all levels of data knowledge, and useable on both PC and Mac computers.

The software required to use these dashboards is Tableau Reader, which can be downloaded here for free. For more detailed instructions on installing and using Tableau Reader, click here.

Dashboards

Longitudinal Immigration Database ICARE Dashboard, 2012-2019

The Longitudinal Immigration Database ICARE Dashboard presents data from the IMDB ICARE tables T1 and T2 in a series of interactive charts. Data on immigrant taxfiler mobility and economic outcomes are compared with settlement service delivery, admission categories and world areas of birth. The dashboard includes time series showing data on immigrant taxfiler landing groups over time, and charts showing data for individual tax years.

Click here to download this dashboard from the catalogue.

Village of 100 Dashboard, 2021

This interactive Tableau dashboard presents a selection of census indicators for a chosen geography, as if it were a village of 100 people. This is a new version of the previous Village of 100 dashboard, updated with 2021 Census data.

Click here to download this dashboard from the catalogue.

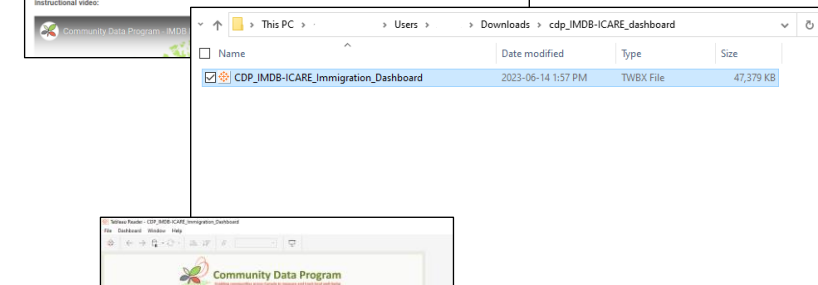
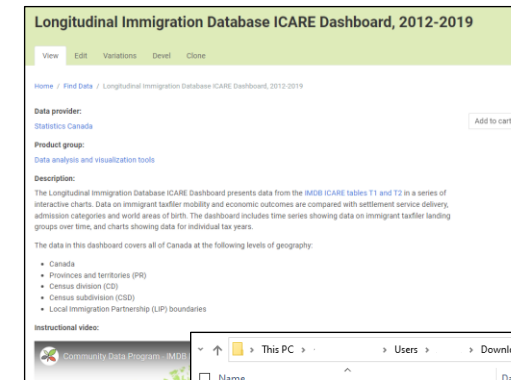
Housing Dashboard - Version 1

The Housing Dashboard is an interactive data storytelling tool, helping users to understand and tell stories about housing in their communities. The dashboard guides users through a selection of housing indicators from sources including Statistics Canada and CMHC, offering questions and relevant

How to use CDP Tableau Dashboards

Opening Tableau Packaged Workbooks

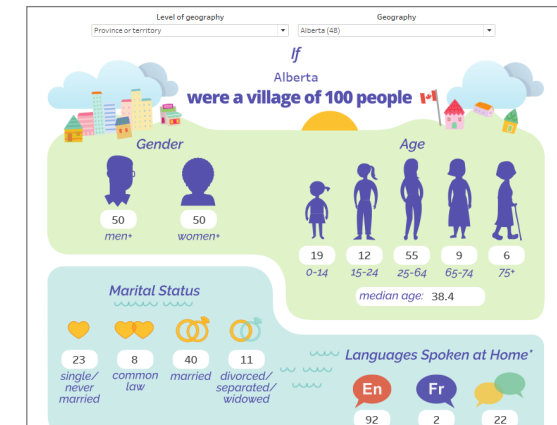
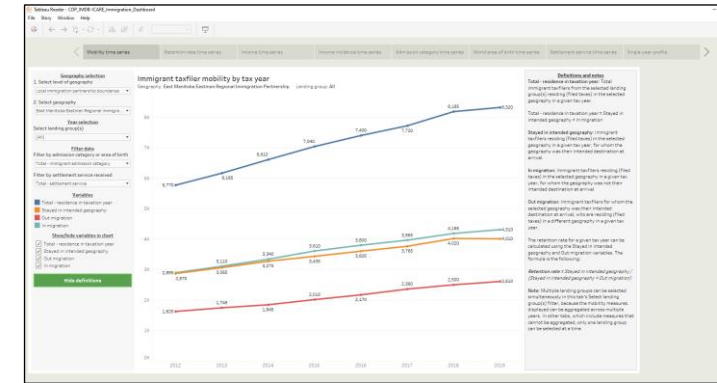
1. Install Tableau Reader
2. Find and download a dashboard from the CDP catalogue
 - Same steps as downloading any other data product
3. Unzip the .zip file that is downloaded containing the packaged workbook file
4. Double-click to open the packaged workbook file in Reader OR open Tableau Reader, click File > Open and select the packaged workbook file



How to use CDP Tableau Dashboards

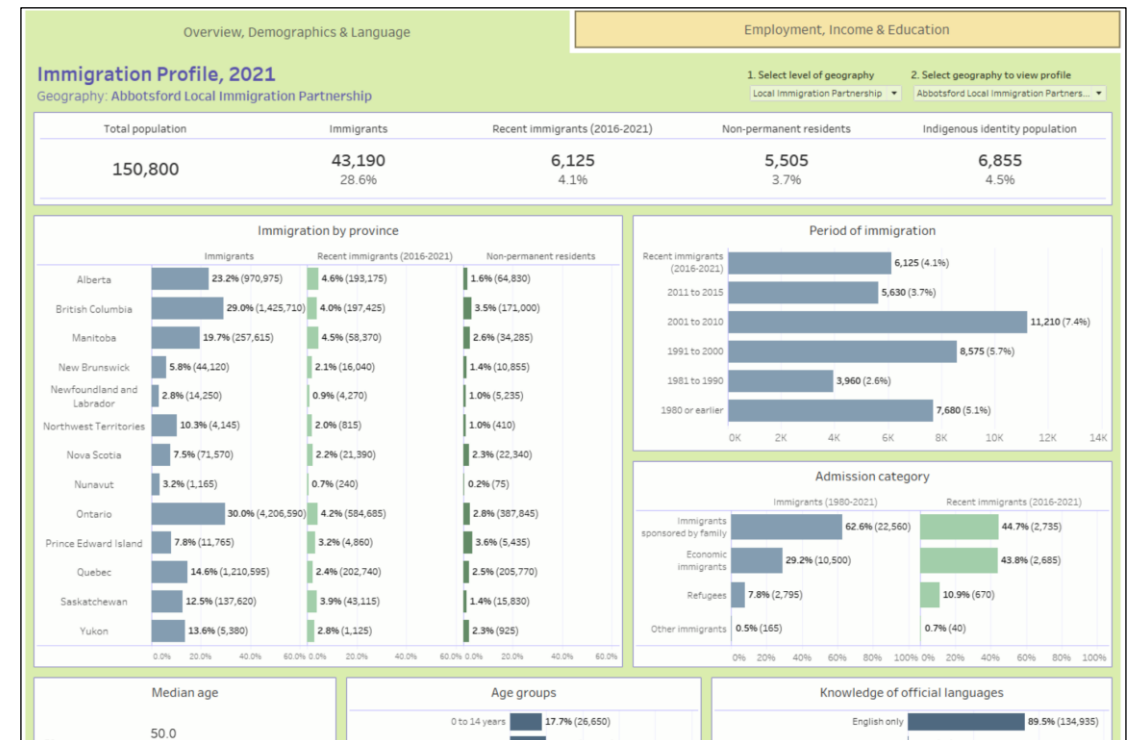
Using Tableau dashboards

- The instructions vary by dashboard
- Dashboards contain instruction and are designed to be intuitive to use
- Select geographies and apply filters
- Most dashboards contain a welcome page and links to data sources
- If you have specific questions, email us at information@communitydata.ca



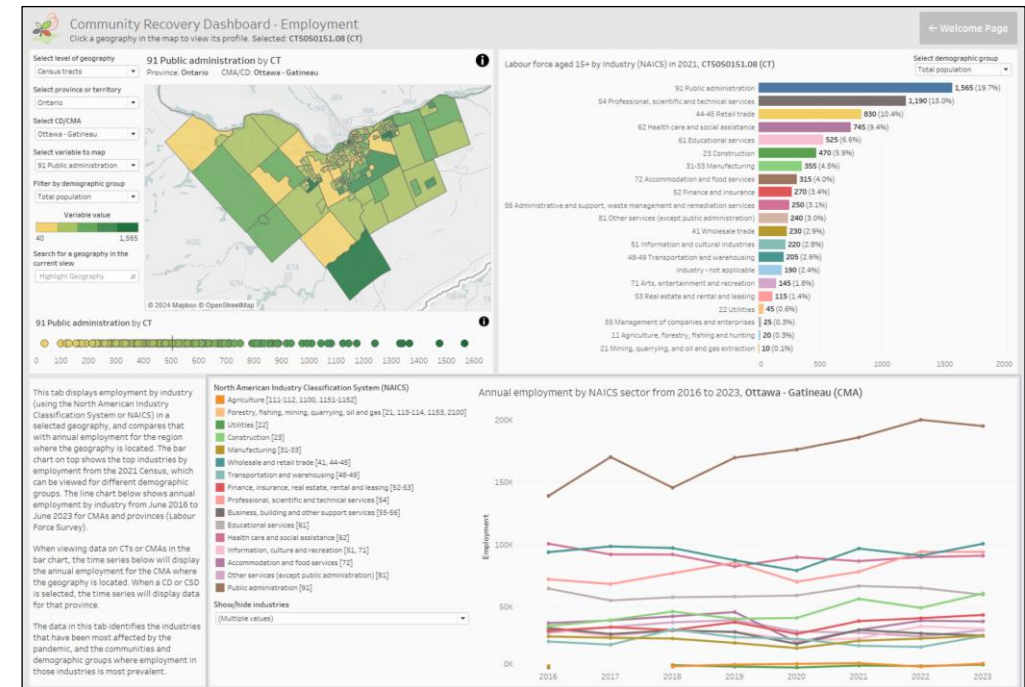
Demo: Immigration Profile Dashboard, 2021

- Infographic style dashboard
- Displays immigration-related variables for a selected community



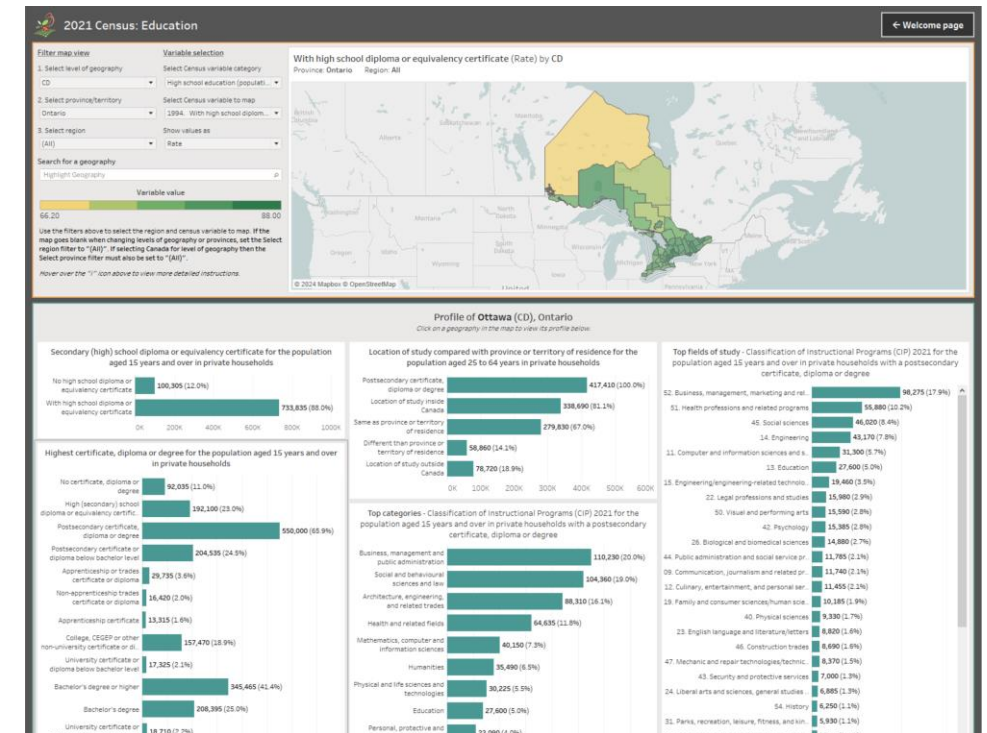
Demo: Community Recovery Dashboard V4

- Themed dashboard
- Interactive mapping and charts for comparison across geographies
- Filters for selecting data to display



Demo: Census Profile, 2021 - Education, Labour Force and Commuting Dashboard

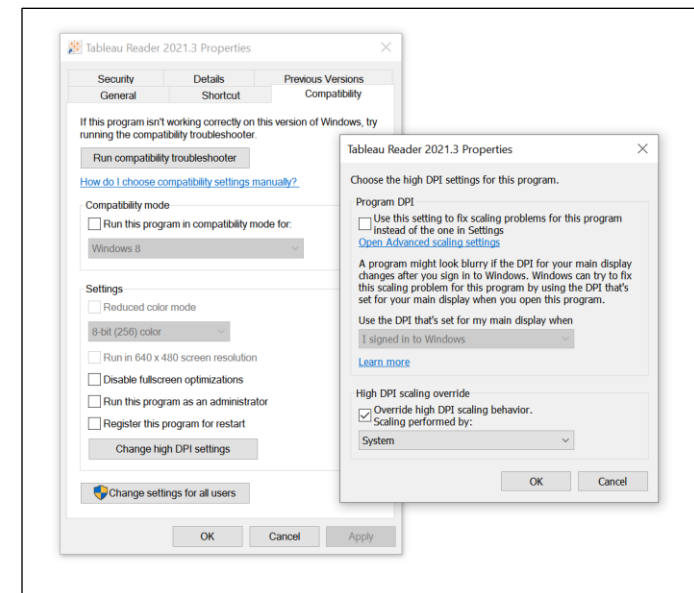
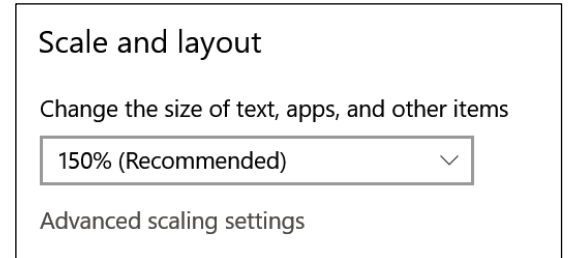
- Infographic dashboard with interactive mapping
- Displays data from 2021 Census Profile
- Part of 2021 Census Profile dashboard series



How to use CDP Tableau Dashboards

Common questions and issues

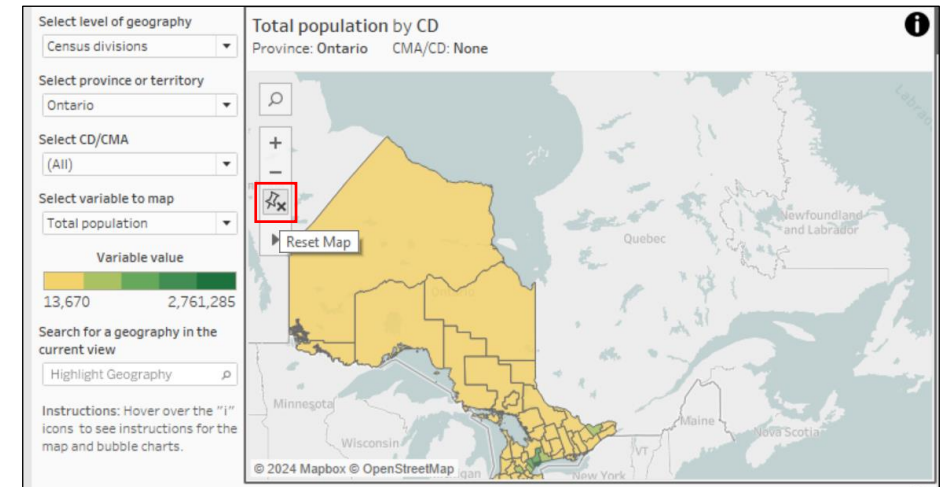
- Text in dashboards appears too large or is cut off
 - Adjust scaling setting to “100%” when using Tableau Reader
 - Found in Windows “Display” settings under “Scale and Layout”
 - OR in some cases this can be fixed permanently in the Tableau Reader Windows properties (right-click the Tableau Reader shortcut in Windows and click “Properties”)
 - Go to “Compatibility” > “Change high DPI settings” then checking the box for “Override high DPI scaling behavior”
 - Select “System” for “Scaling performed by:” setting
 - If this does not work, unchecking “Override high DPI scaling behavior” will return everything to normal



How to use CDP Tableau Dashboards

Common questions and issues

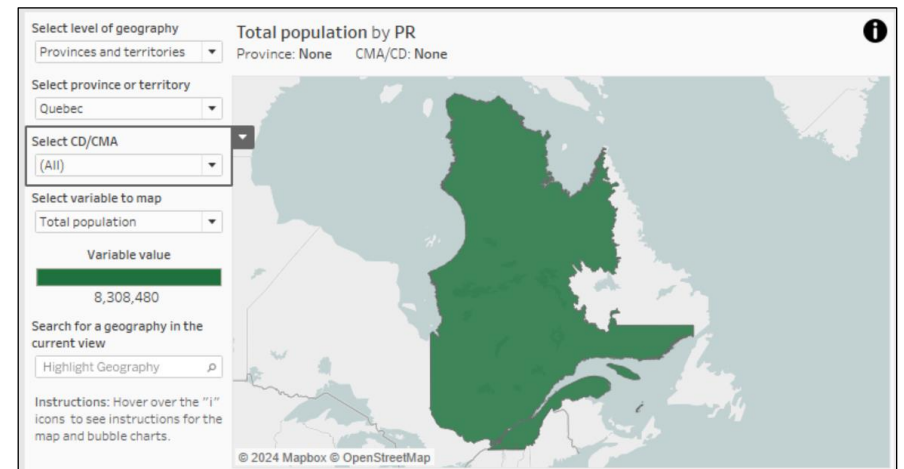
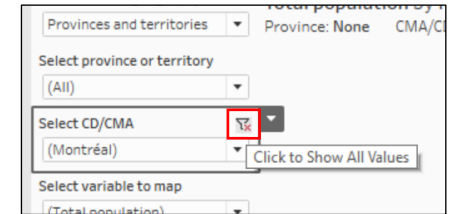
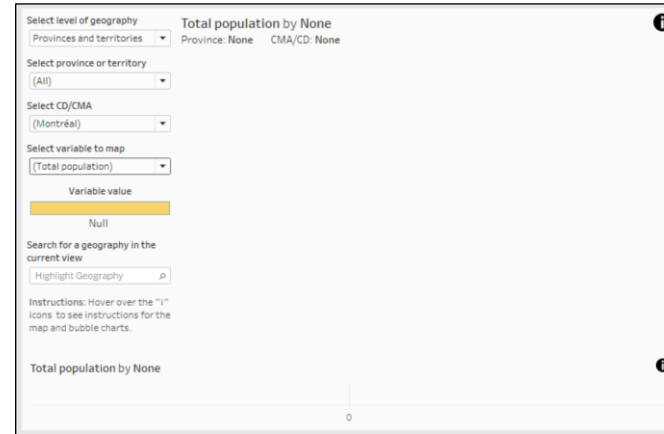
- The map doesn't update when changing provinces or levels of geography
 - The map needs to be in the "reset" position to update when changing geographies
 - If you have moved the map, press the "Reset Map" button (pin icon) before or after changing geography filters to zoom to the new geographies automatically



How to use CDP Tableau Dashboards

Common questions and issues

- The map display disappears when changing geography filters
 - Set the “Select region” or “Select CD/CMA” filters to “(All)” (or click the “Click to show all values” button) and the geographies should reappear
 - If they do not reappear, then set “Select province or territory” to “(All)” as well and that will fix the issue
 - This happens when you have filtered out all geographies with your filter selection



Thank you!

Questions?

If you have any questions about our dashboards, you can email us at information@communitydata.ca