

# Orientation to the Community Data Program, the Catalogue & More

October 25, 2023

Presented by Saeideh Hejazi and Michael Ditor



## By the end of the session you will have a better understanding of:

1. What is the Community Data Program?
2. What datasets are available through the program?
3. Finding and using data
4. Tableau dashboards
5. General questions



# What is the Community Data Program (CDP)?

- Established in the 1990s by Canadian Council on Social Development. Now administered by Canadian Community Economic Development Network (CCEDNet)
- Created to track poverty in neighbourhoods
- Focuses on acquiring data for small area geography from Statistics Canada and other data sources
- Helps analyze and report on socioeconomic trends
- Shares cost of data



**The CDP can help  
get you here!**



DATA



SORTED



ARRANGED



PRESENTED  
VISUALLY



EXPLAINED  
WITH A STORY

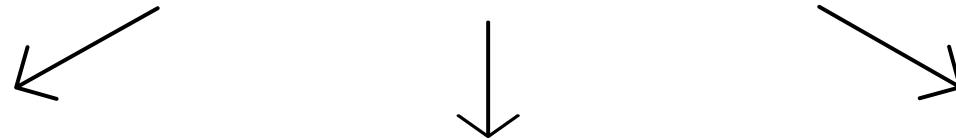


ACTIONABLE  
(USEFUL)



# What services does the CDP provide?

## Priority Areas



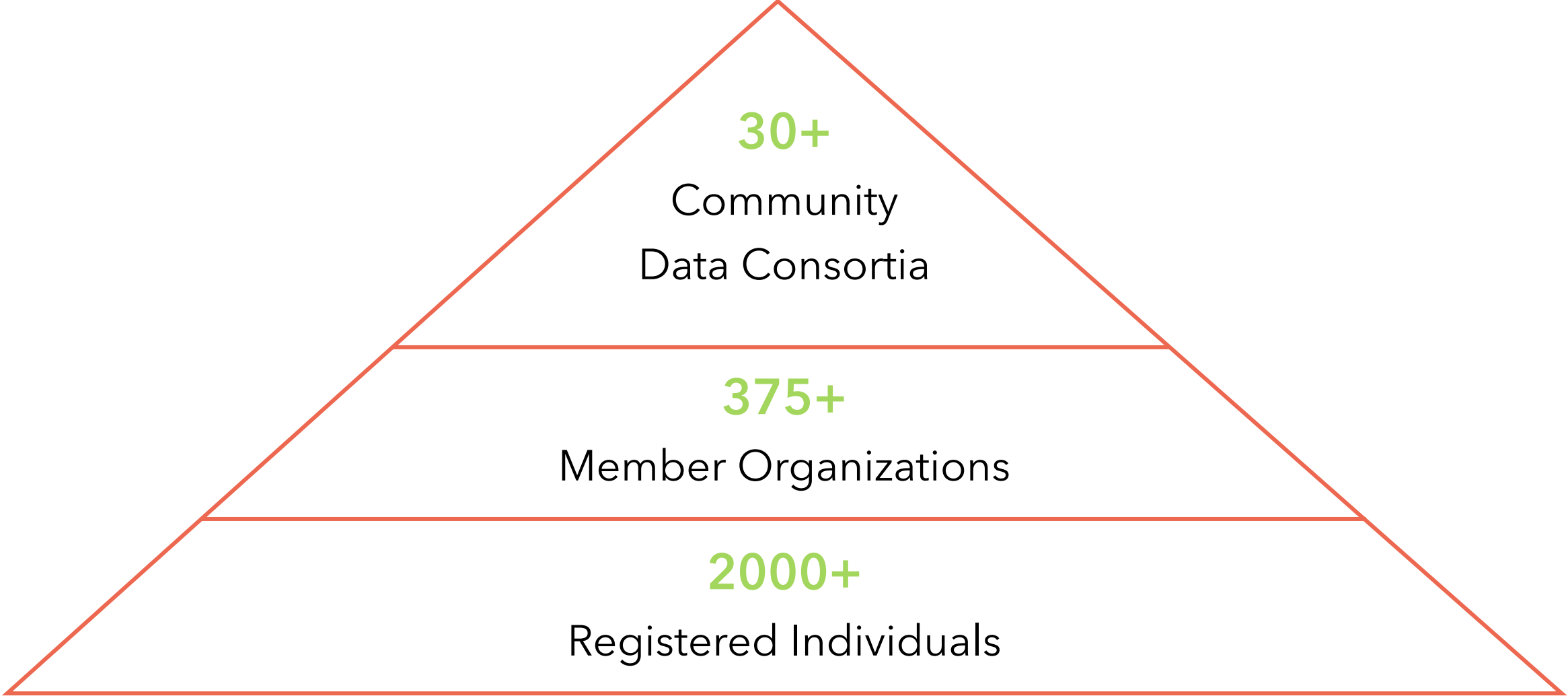
Data	Capacity Building	Networking
Direct access to web-based customized community data	Data analysis tools and training	National networking sessions



# Who is involved in the network?



# How is the CDP structured?



# Who is involved in the network?

## Consortium Network

- National network, covering all of Canada except for PEI and Quebec and the Territories

## Examples of Members

- Municipal and provincial governments
- Local United Way chapters
- Community health centres
- Social planning councils
- School boards
- Immigration and youth services
- Libraries
- Economic development agencies





# How are membership fees structured?

## Consortium Fees

- Fees based on population
- Collected annually by CDP
- Consortium leads can develop own model for recovering costs

## Membership Fees

- Member organizations pay a \$150 annual fee to the CDP
- Typically, each legal entity, i.e. a municipality, is responsible for paying its own membership fee
- Membership fee enable an unlimited number of user accounts within organization

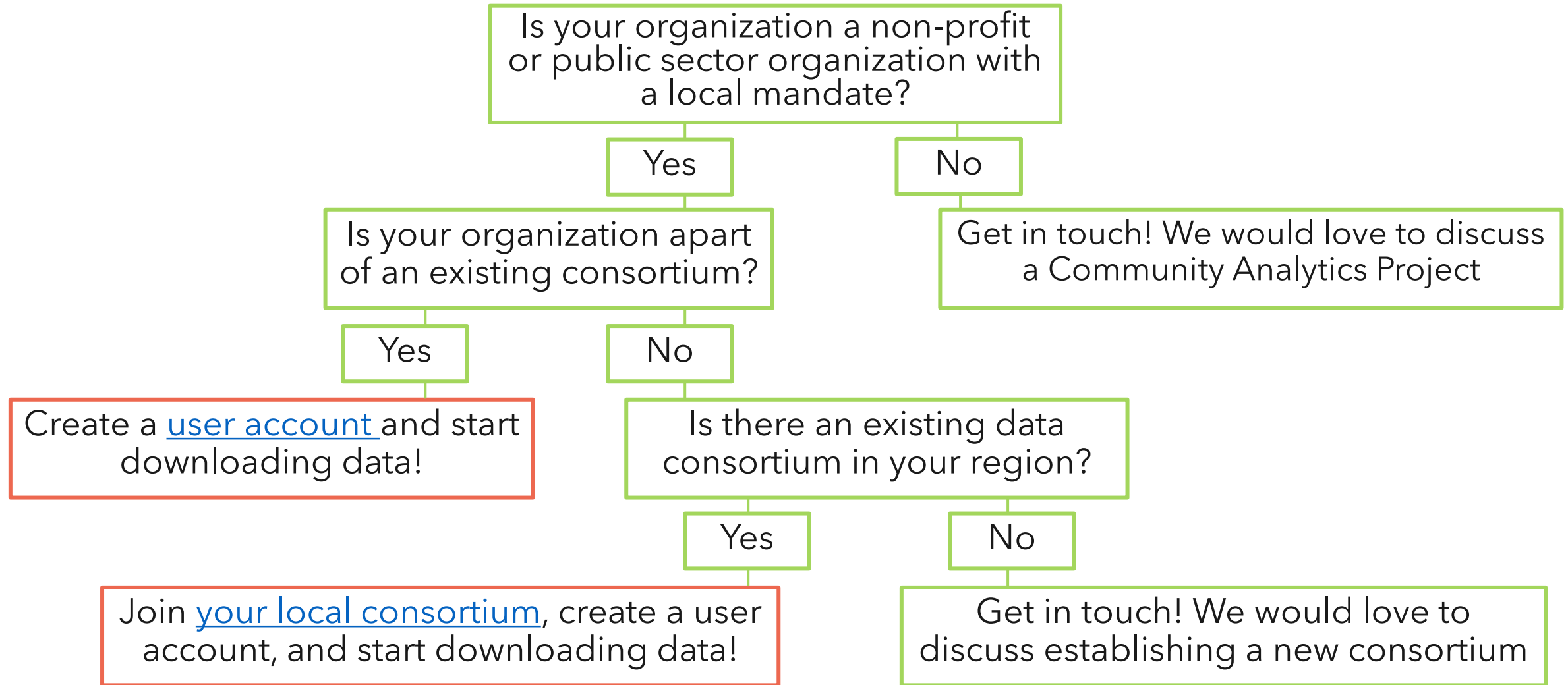


# *Why this model?*

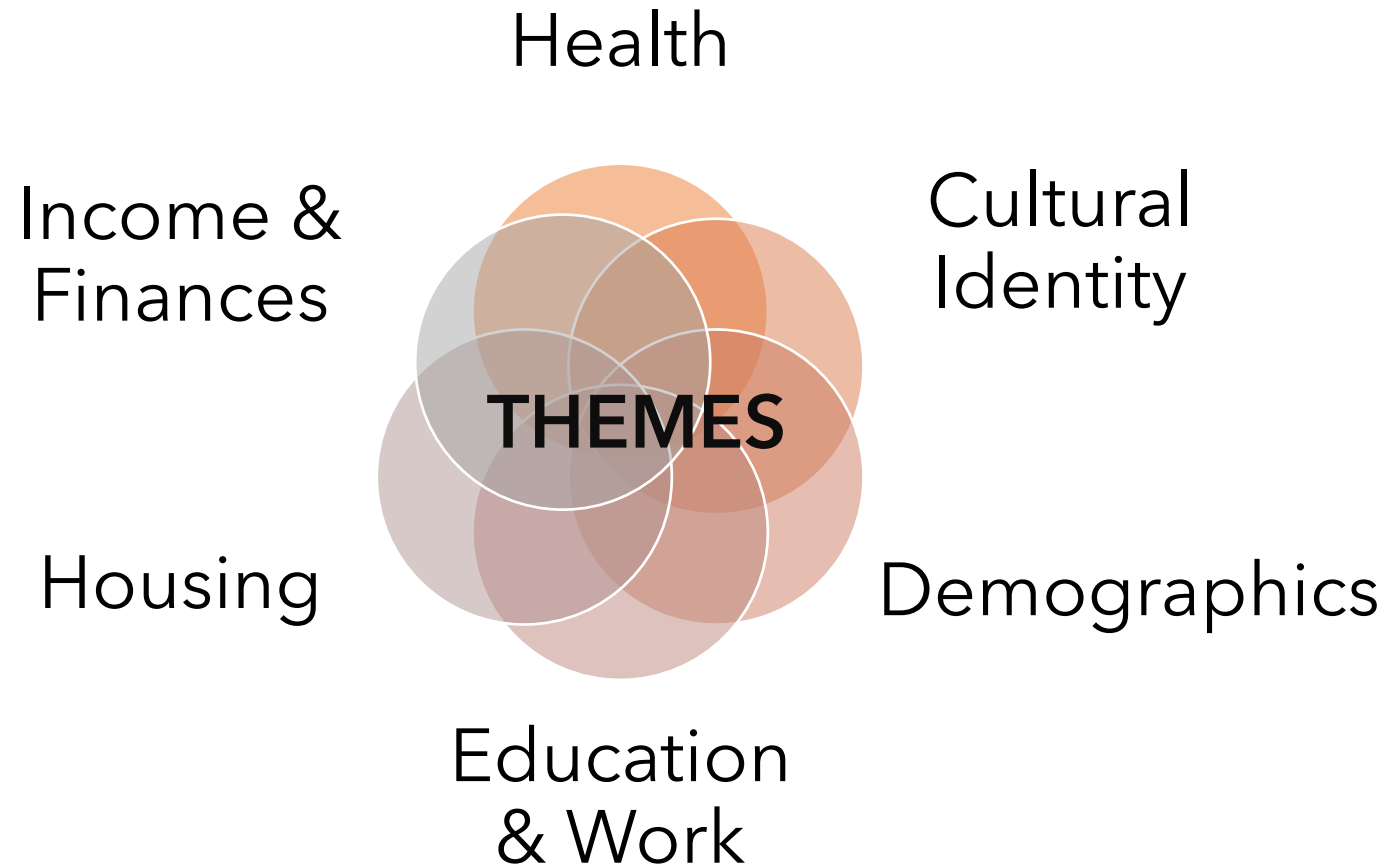
- The CDP was previously partly funded by the federal government. In 2011, this funding was pulled
- The consortium model allows the CDP to be financially independent and continue to purchase data, offer support, and grow the program



# How can I access CDP data?



# What data sets are available through the program?

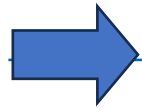


# What data sets are available through the program?

- Smallest possible geographic scale
  - Always sub-provincial
  - Municipal Level (Census Division, Census Subdivision)
  - Neighbourhood-level where possible (Dissemination Area, Census Tract)
- Custom Statistics Canada data
  - Custom cross-tabulations and target group profiles
  - Custom boundaries
- Links to open data
- Data available in IVT table format, excel, or Tableau



# *Refresher on Statistics Canada Geography*



[Link to the Illustrated Glossary page on Statistics Canada website](#)

## **Census Division (CD):**

- An intermediate geographic areas between the province/territory level and the municipality
- In some provinces, CDs correspond with regional district, county, or upper tier municipality

## **Census Subdivision (CSD):**

- Corresponds with municipal boundaries (as determined by provincial/territorial legislation)

## **Dissemination Area (DA):**

- Small, relatively stable geographic unit composed of one or more adjacent dissemination blocks with an average population of 400 to 700

## **Aggregate Dissemination Area (ADA):**

- With populations between 5,000 and 15,000, ADAs are created by grouping existing dissemination geographic areas, including census tracts (CTs), census subdivisions (CSDs) or dissemination areas (DAs). ADA boundaries respect provincial, territorial, census division (CD), census metropolitan area (CMA) and census agglomeration (CA) boundaries.



# *Refresher on Statistics Canada Geography*

## **Census Metropolitan Area (CMA):**

- One or more adjacent municipalities centred on a population centre (known as the core). A CMA must have a total population of at least 100,000, of which 50,000 or more must live in the core

## **Census Agglomeration (CA):**

- One or more adjacent municipalities centred on a population centre (known as the core). A CA must have a core population of at least 10,000.

## **Census Tract (CT):**

- Small, relatively stable geographic areas that usually have a population between 2,500 and 8,000 persons.
- Located in census metropolitan areas (CMAs) and census amalgamations (CAs) with a stable, core population of at least 50,000



# 2021 Census Release

- Semi-custom tabulations (standard tables at smaller geographies)
- Custom tabulations
- Target Group Profiles
- Tables at custom geographies
  - Census Profile
  - detailed Age & Gender
  - popular tables like TGPs
- [CDP prepared a Tableau Dashboard for each data release](#)





# CDP TOOLS

1. Website Resources
2. The Data Catalogue
3. Beyond 20/20
4. Tableau
5. QGIS

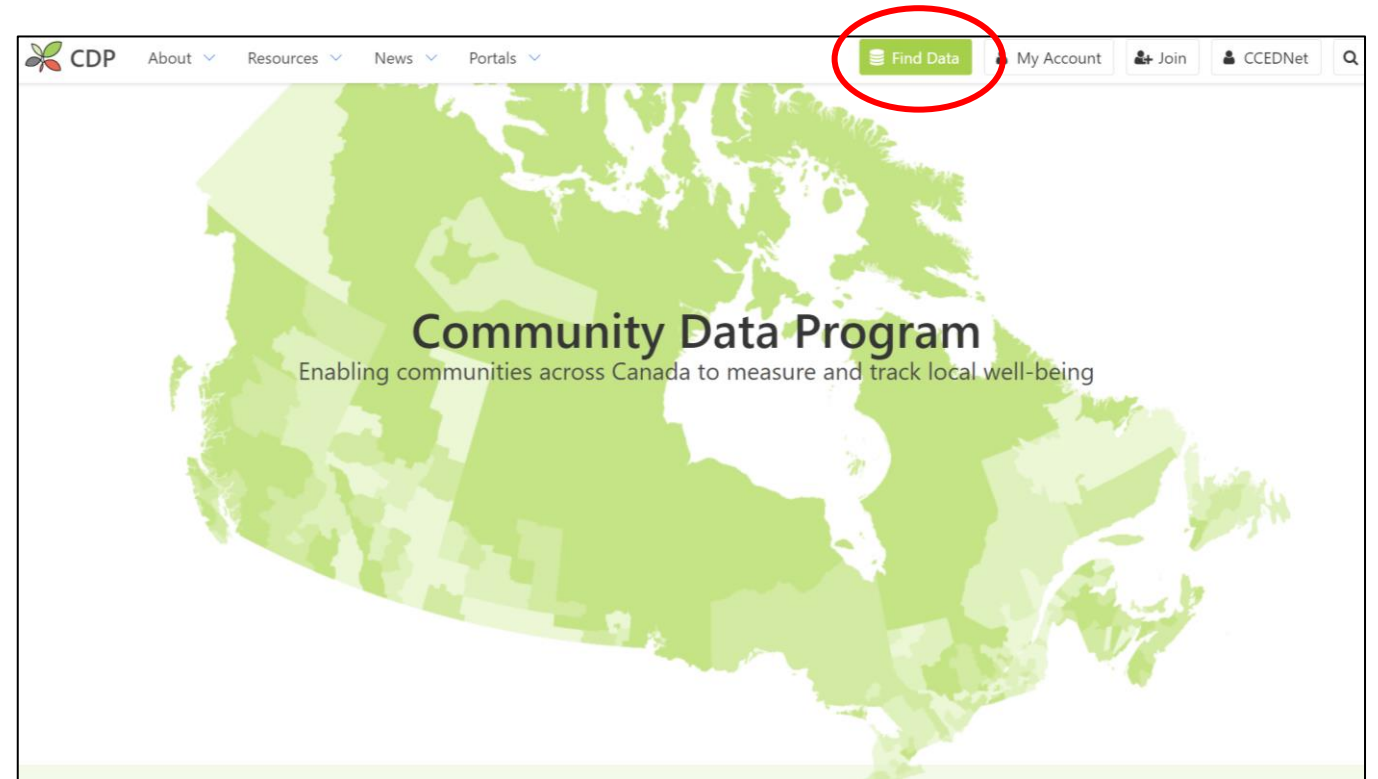


# The Data Catalogue

## What to use it for:

- Accessing data tables and tableau dashboards
- All users with a registered account can download as much data as they like
- Data is typically available in .csv (Excel), .ivt (Beyond 20/20), or .twbx (Tableau) format

To access the data catalogue from the home page click "[find data](#)"



# The Data Catalogue

**Use the search parameters to find the data you are looking for.**

Find Data  
Search our Canadian datasets by applying the filters below

<b>Topics</b> Choose some options	<b>Product Group</b> Choose some options	<b>Data Provider</b> Choose some options	
<b>Product Title</b> Add part, or all of the title	<b>Geographies</b> Choose some options	<b>Years within data</b> i.e. 2006 1976	<b>Items per page</b> 20

**Apply Filters** **Reset Filters**

**Want to learn more  
about how to  
use the catalogue?**

Check out our "[How to Find Data](#)" page



# Highlights of data sets available through the CDP



# CDP Data Sets - Census of Population

- Every 5 years
- 2-year lag for data production
- Semi-custom tabulations (standard tables at smaller geographies)
- Custom tabulations
- Target Group Profiles
- Tables at custom geographies
  - Census Profile
  - detailed Age & Gender
  - popular tables like TGPs



# CDP Data Sets - Census of Population

## Upcoming 2021 Census data sets

- Household and Family Target Group Profiles
- more custom tabulations
- new Target Group Profiles
- Target Group Profiles at DA level
- Target Group Profiles at custom geographies
  
- Still time to submit 'straggler' custom geographies



# CDP Data Sets - T1 Family File (Taxfiler)

- Annual data source
- Two-year lag in publication (e.g., 2020 data coming out in 2020)
- Postal Geographies
  - Forward Sortation Areas, Postal Cities, Rural Postal Codes,
- Census Geographies
  - Census Divisions, Census Metropolitan Areas, Census Agglomerations, Census Tracts
  - Census Subdivisions now standard geography for T1FF, but has some accuracy issues due to imperfect conversion from postal geography



# CDP data sets - T1 Family File (Taxfiler)

- Income of Individuals
- Income of Families
- Income of Seniors
- custom tabulations from the Individuals, Families and Seniors tables
- Financial Data and Charitable Donations
- Migration Estimates
- Working Poor and Income Inequality tables (custom)

Counts, age and income of taxfilers, dependents, families by type and number of children, sources of income, low-income status

- [Technical Reference Guide - Families, Individuals and Seniors](#)
- [Technical Reference Guide - Financial Data and Charitable Donations](#)





# CDP data sets - T1 Family File (Taxfiler)

- Working Poor - by age (0-64, 18-64, 65+)
  - has an after-tax income below the Low Income Measure
  - has earnings of at least \$3000 a year (threshold for Working Income Tax Benefit)
  - is not a student
  - lives independently (non-institutional population).
- Income Inequality
  - after-tax income threshold upper limits
  - aggregate income by decile



# CDP data sets - Highlights

## Canadian Business Counts

- June and December releases
- Counts of businesses by NAICS industry code and # employees

## Postal Code Conversion File

- Allows converting postal codes to Census geographies
- Yearly release



# CDP data sets - Highlights

## Longitudinal Immigration Database (IMDB)

- Links T1 tax records to IRCC immigration records
- Provides longitudinal data on immigrant mobility and economic outcomes
- Yearly release

## Longitudinal Administrative Databank (LAD)

- Provides longitudinal data - low-income mobility
- Yearly release



# CDP data sets - Highlights

## Building Permits

- Administrative data source
- Construction permits: count and \$ value, by type of work done
- Yearly release

## Estimates of population by age and sex

- CSD geographies, single years of age
- Yearly release



# CDP data sets - Highlights

## Labour Force Survey

- CMA and Economic Region (yearly)
- Census Division (e.g., county, region) - two-year estimates
- Sample size increasing - municipal-level data?

## IRCC Permanent Resident Admissions

- Census Subdivision and Census Division
- Will try to update annually
- Have submitted request for **Temporary Residents** data



# CDP data sets - Highlights

## Other data products

- CMHC data
- Canadian Survey on Disability
- Modeled estimates of average liquid assets
- CCHS PUMF
- TransUnion data
- Canadian Internet Use Survey



# Beyond 20/20

## What to use it for:

- Many tables are only available in .IVT table format
- StatsCan software
- Can be used to manipulate multi-dimensional tables and zero in on the data you need before bringing data into excel

The screenshot shows the StatsCan software interface with a table titled "Age Group of Child (12), Number of Grandparents (3) and Sex (3) for the Grandchildren Living With Grandparents With No Parent Present, in Private Households of Canada (01) 20000". The table is organized into columns for "Number of grand", "Total - Grandchildren in census families", "Living with grandparent couple", and "Living with one grandparent", each further divided by "Sex (3)". The rows represent different age groups of children, from "Total - Age group of child" down to "30 years and over". A "Drill back" button is visible at the bottom left of the table area.

Age group of ch	Total - Grandchildren in census families			Living with grandparent couple			Living with one grandparent		
	Total - Sex	Male	Female	Total - Sex	Male	Female	Total - Sex	Male	Female
Total - Age group of child	75,185	41,850	33,330	38,335	21,275	17,060	36,845	20,575	16,275
Under 15 years	30,010	15,345	14,660	17,340	8,920	8,425	12,665	6,430	6,235
0 to 4 years	6,660	3,410	3,250	3,670	1,895	1,775	2,995	1,515	1,480
5 to 9 years	10,265	5,235	5,025	5,925	3,060	2,875	4,335	2,185	2,150
10 to 14 years	13,085	6,705	6,380	7,750	3,975	3,775	5,335	2,730	2,605
15 to 19 years	18,050	9,885	8,165	10,145	5,590	4,555	7,905	4,290	3,610
20 to 24 years	10,115	5,370	4,745	5,765	3,070	2,690	4,350	2,300	2,050
25 to 29 years	3,970	2,225	1,745	2,240	1,285	955	1,735	940	795
30 years and over	3,960	2,285	1,675	2,145	1,235	905	1,820	1,050	765
	14,475	8,675	5,805	7,010	4,310	2,700	7,470	4,365	3,105
	6,865	4,285	2,585	2,475	1,590	885	4,390	2,690	1,705
	5,780	3,660	2,115	1,365	860	500	4,420	2,805	1,610



# Beyond 20/20

**Want to learn more about  
using Beyond 20/20?**

Check out our [Beyond 20/20  
Resources](#) on the CDP Website

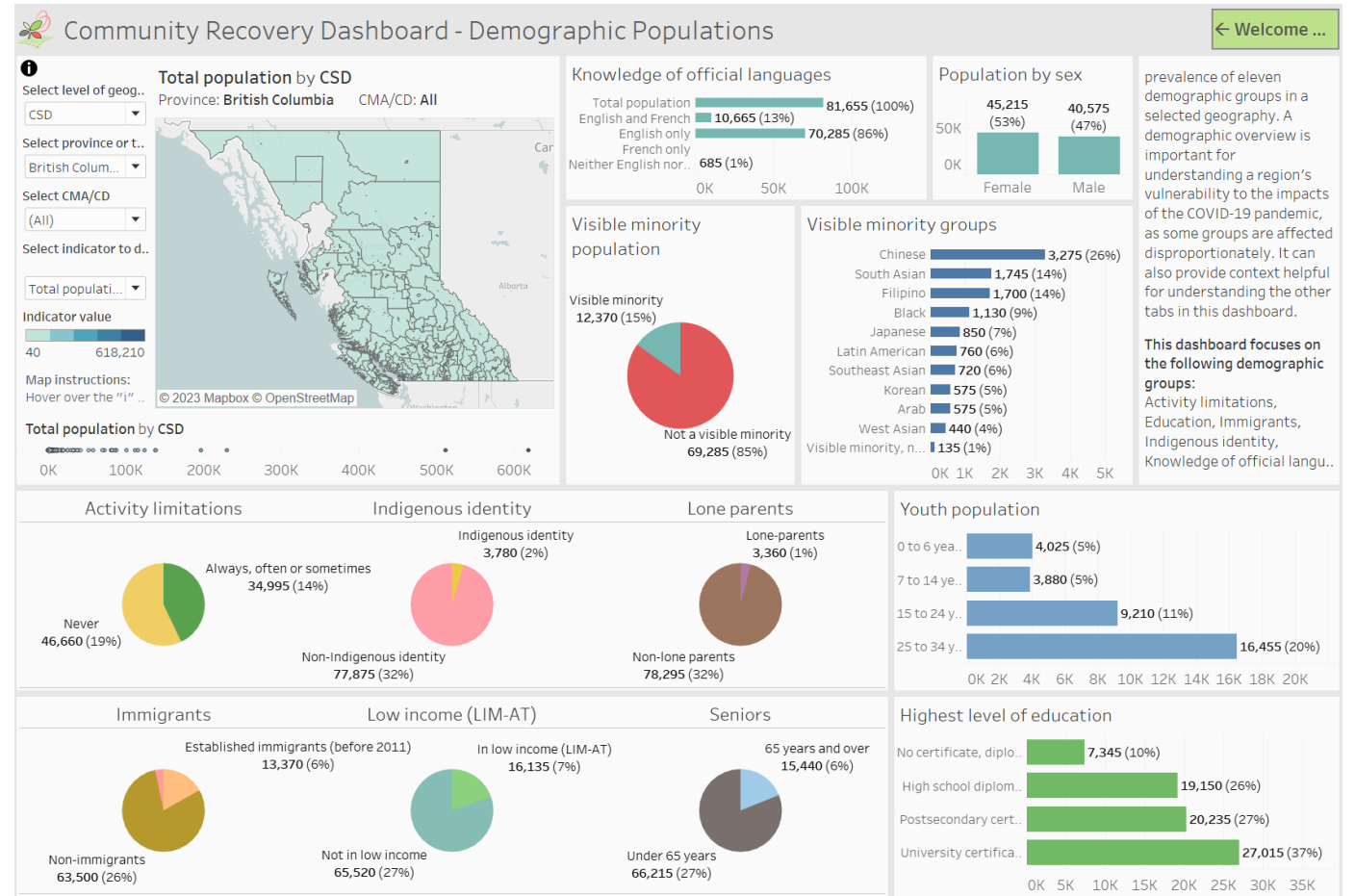




# Tableau

## What to use it for:

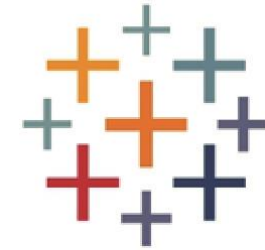
- Data visualization and data access – We did the work for you!
- Users can access CDP data without having to download an .IVT table
- Easier to see trends and conduct analysis



# Tableau

## Want to learn more about using Tableau?

Check out our [Infographics and Dashboard Portal](#), previous webinar on using [Tableau for data visualization](#), and tutorial on the [Community Recovery Dashboard](#)



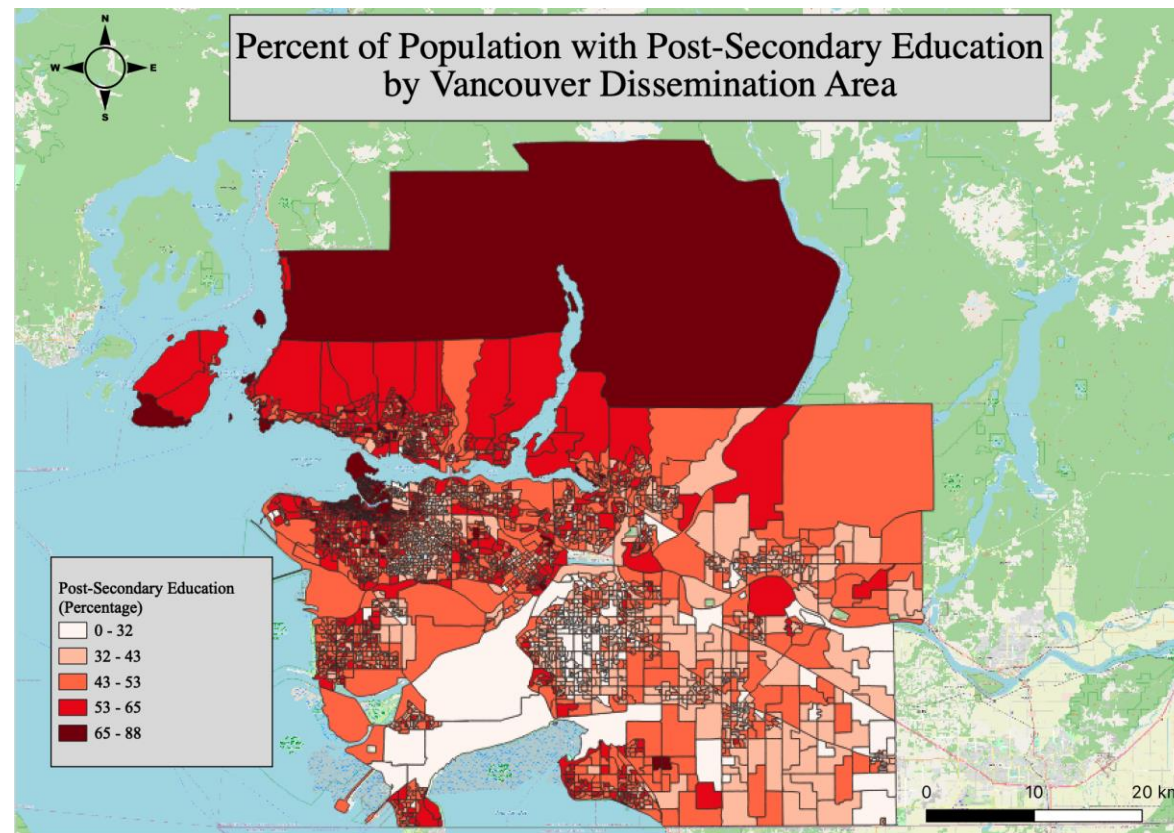
tableau



# QGIS

## What to use it for:

- Open source mapping software
- Most CDP data can be mapped
- Census data is spatial data – Must be joined to a georeferenced file (shapefile) to map



# QGIS

## Want to learn more about using CDP data in QGIS?

Check out our tutorial on [bringing data from the catalogue into QGIS](#)

Need a spatial data file? Visit the [StatsCan Website](#) to download a boundary file



# Want to learn more?

Visit our [webinar archive page](#)

## Recently added recordings include:

- [Immigration Data Portal: Orientation to ICARE, IMDB and 2021 Census Data Tables, Dashboards and Infographics](#)

Working on a project that uses CDP data? Want to share your work in a webinar format? Let us know!



**Thanks for listening!**  
**Contact us any time with questions.**

[www.communitydata.ca](http://www.communitydata.ca)

[information@communitydata.ca](mailto:information@communitydata.ca)



**Community Data Program**

Enabling communities across Canada to measure and track local well-being