

Introduction to the Community Data Program

July 4, 2023

Presented by Saeideh Hejazi and Michael Ditor



By the end of the session you will have a better understanding of:

1. What is the Community Data Program?
2. What datasets are available through the program?
3. Finding and using data
4. Tableau dashboards
5. General questions



What is the Community Data Program (CDP)?

- Established in the 1990s by Canadian Council on Social Development. Now administered by Canadian Community Economic Development Network (CCEDNet)
- Created to track poverty in neighbourhoods
- Focuses on acquiring data for small area geography from Statistics Canada and other data sources
- Helps analyze and report on socioeconomic trends
- Shares cost of data



**The CDP can help
get you here!**



DATA



SORTED



ARRANGED



PRESENTED
VISUALLY



EXPLAINED
WITH A STORY

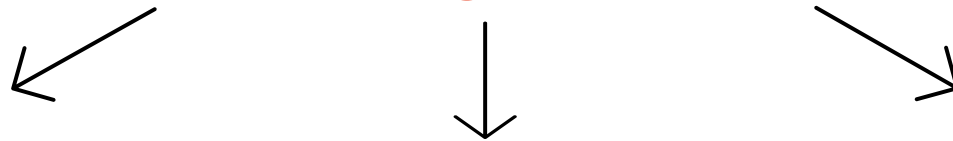


ACTIONABLE
(USEFUL)



What services does the CDP provide?

Priority Areas



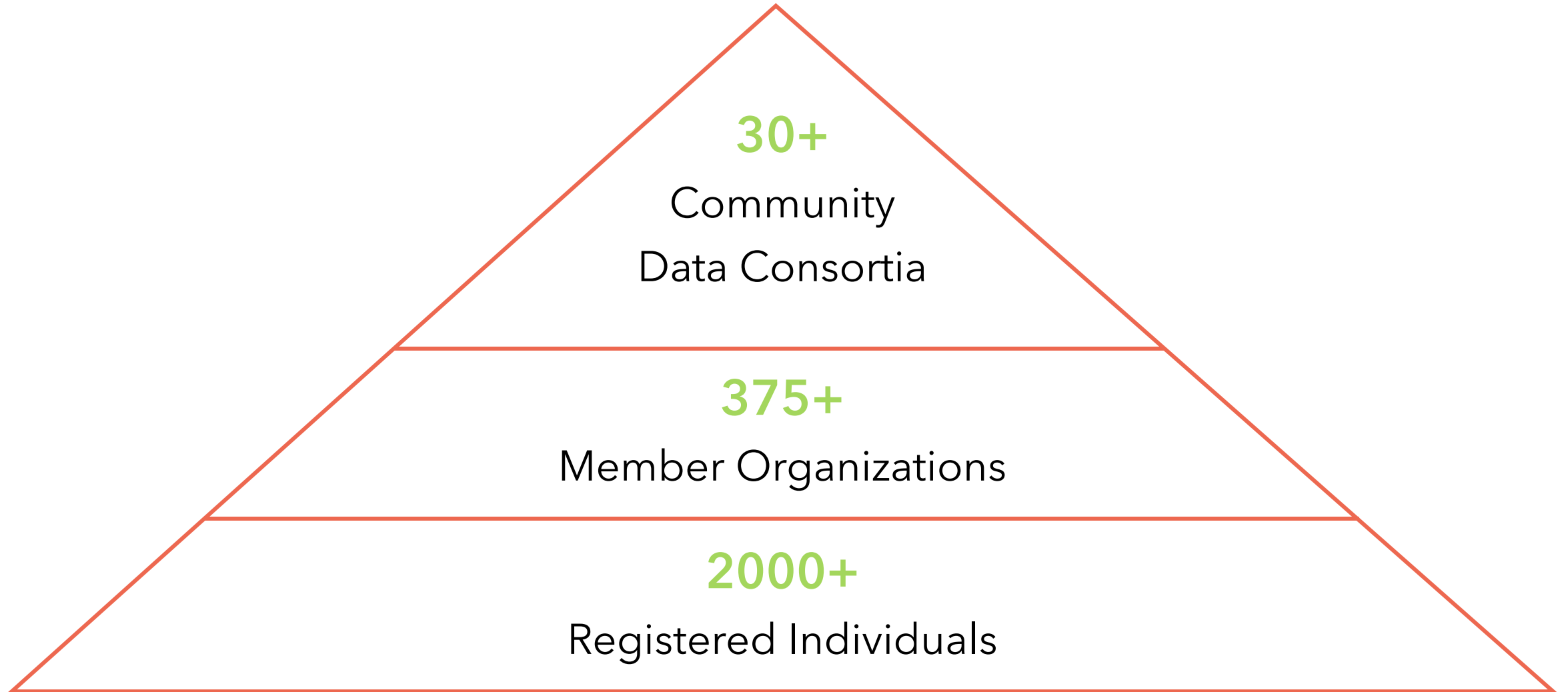
Data	Capacity Building	Networking
Direct access to web-based customized community data	Data analysis tools and training	National networking sessions



Who is involved in the network?



How is the CDP structured?



Who is involved in the network?

Consortium Network

- National network, covering all of Canada except for PEI and Quebec and the Territories

Examples of Members

- Municipal and provincial governments
- Local United Way chapters
- Community health centres
- Social planning councils
- School boards
- Immigration and youth services
- Libraries
- Economic development agencies



How are membership fees structured?

Consortium Fees

- Fees based on population
- Collected annually by CDP
- Consortium leads can develop own model for recovering costs

Membership Fees

- Member organizations pay a \$150 annual fee to the CDP
- Typically, each legal entity, i.e. a municipality, is responsible for paying its own membership fee
- Membership fee enable an unlimited number of user accounts within organization

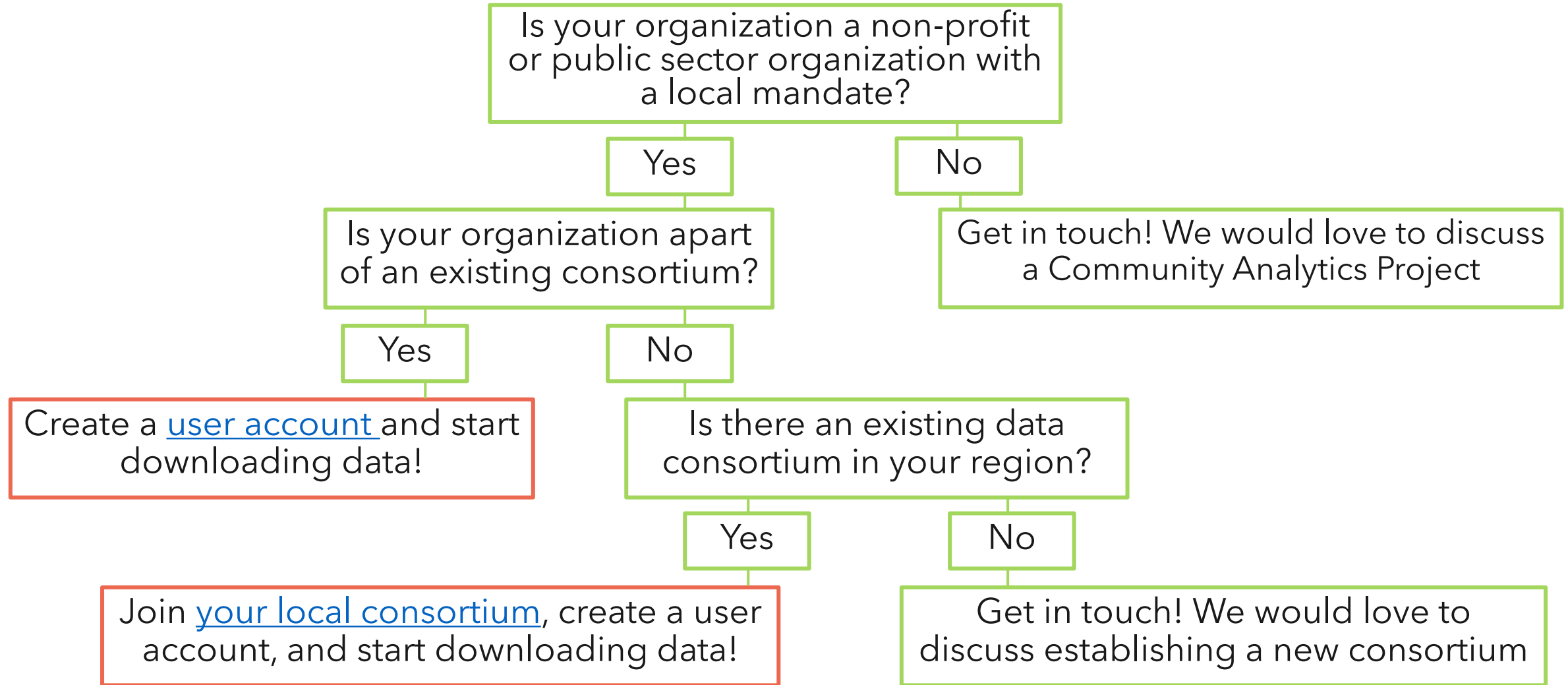


Why this model?

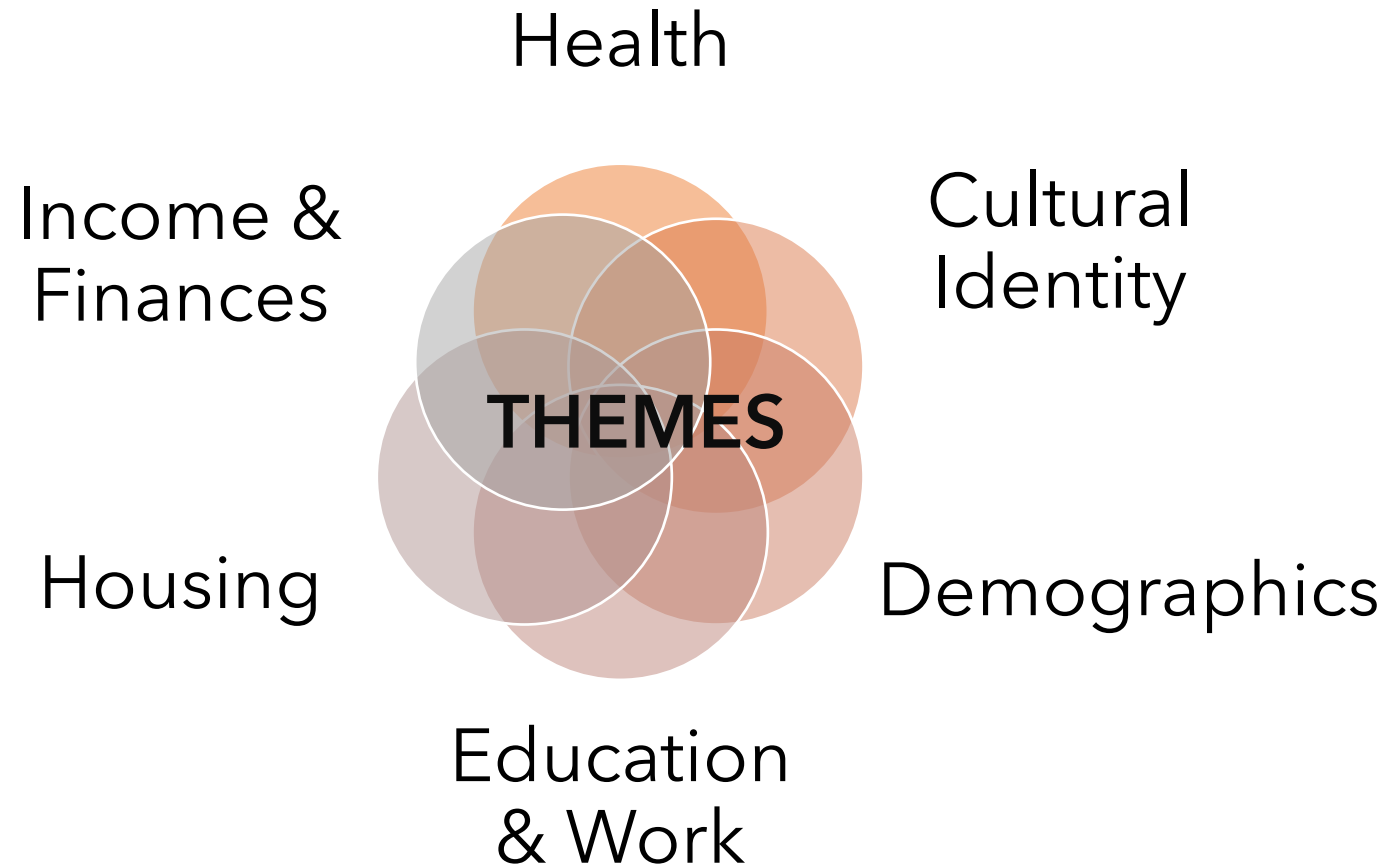
- The CDP was previously partly funded by the federal government. In 2011, this funding was pulled
- The consortium model allows the CDP to be financially independent and continue to purchase data, offer support, and grow the program



How can I access CDP data?



What data sets are available through the program?

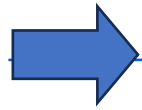


What data sets are available through the program?

- Smallest possible geographic scale
 - Always sub-provincial
 - Municipal Level (Census Division, Census Subdivision)
 - Neighbourhood-level where possible (Dissemination Area, Census Tract)
- Custom Statistics Canada data
 - Custom cross-tabulations and target group profiles
 - Custom boundaries
- Links to open data
- Data available in IVT table format, excel, or Tableau



Refresher on Statistics Canada Geography



[Link to the Illustrated Glossary page on Statistics Canada website](#)

Census Division (CD):

- An intermediate geographic areas between the province/territory level and the municipality
- In some provinces, CDs correspond with regional district, county, or upper tier municipality

Census Subdivision (CSD):

- Corresponds with municipal boundaries (as determined by provincial/territorial legislation)

Dissemination Area (DA):

- Small, relatively stable geographic unit composed of one or more adjacent dissemination blocks with an average population of 400 to 700

Aggregate Dissemination Area (ADA):

- With populations between 5,000 and 15,000, ADAs are created by grouping existing dissemination geographic areas, including census tracts (CTs), census subdivisions (CSDs) or dissemination areas (DAs). ADA boundaries respect provincial, territorial, census division (CD), census metropolitan area (CMA) and census agglomeration (CA) boundaries.



Refresher on Statistics Canada Geography

Census Metropolitan Area (CMA):

- One or more adjacent municipalities centred on a population centre (known as the core). A CMA must have a total population of at least 100,000, of which 50,000 or more must live in the core

Census Agglomeration (CA):

- One or more adjacent municipalities centred on a population centre (known as the core). A CA must have a core population of at least 10,000.

Census Tract (CT):

- Small, relatively stable geographic areas that usually have a population between 2,500 and 8,000 persons.
- Located in census metropolitan areas (CMAs) and census amalgamations (CAs) with a stable, core population of at least 50,000



2021 Census Release

- [CDP prepared a Tableau Dashboard for each data release](#)
- Semi-custom tabulations (standard tables at smaller geographies)
- Custom tabulations
- Target Group Profiles
- Tables at custom geographies
 - Census Profile
 - detailed Age & Gender
 - popular tables like TGPs

2021 Census of Population Release schedule by theme	2021 Census of Population Release schedule by topic
February 9, 2022 Canada's growing population and where they are living	February 9, 2022 Population and dwelling counts
April 27, 2022 Canada's shifting demographic profile	April 27, 2022 Age Sex at birth and gender Type of dwelling
July 13, 2022 Portrait of Canada's families and households Contemporary portrait of Canadian Veterans Income profile of Canadians	July 13, 2022 Families, households, and marital status Canadian military experience Income
August 17, 2022 Linguistic diversity and use of English and French in Canada	August 17, 2022 Language
September 21, 2022 First Nations people, Métis and Inuit in Canada Canada's housing portrait	September 21, 2022 Indigenous peoples Housing
October 26, 2022 Portrait of citizenship and immigration in Canada Ethnocultural and religious composition of the population Mobility and migration	October 26, 2022 Immigration, place of birth, and citizenship Ethnocultural and religious diversity Mobility and migration
November 30, 2022 Education in Canada The changing dynamics of the Canadian labour force and how people get to work Instruction in the official minority language	November 30, 2022 Education Labour Language of work Commuting Instruction in the official minority language



CDP TOOLS

- 1.The Data Catalogue
- 2.Beyond 20/20
- 3.Tableau
- 4.QGIS

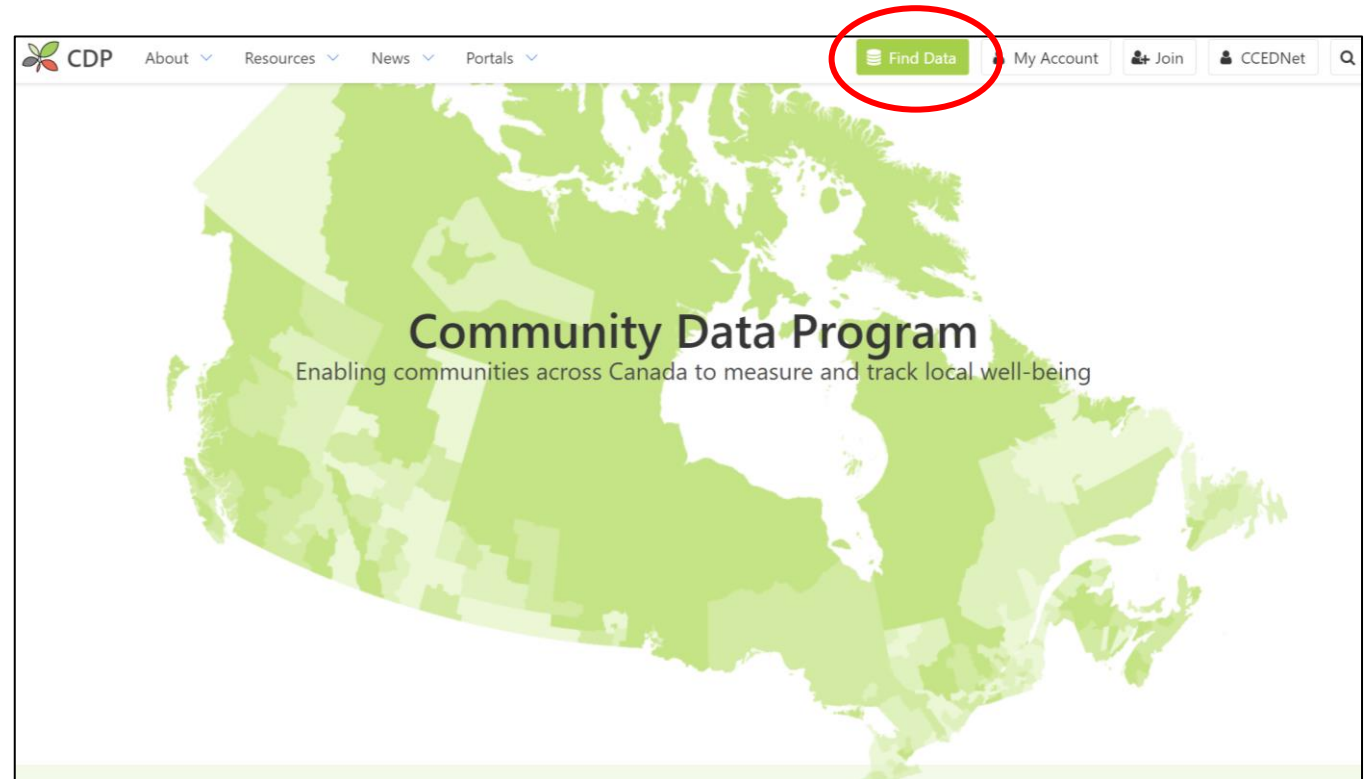


The Data Catalogue

What to use it for:

- Accessing data tables and tableau dashboards
- All users with a registered account can download as much data as they like
- Data is typically available in .csv (Excel), .ivt (Beyond 20/20), or .twbx (Tableau) format

To access the data catalogue from the home page click "[find data](#)"



The Data Catalogue

Use the search parameters to find the data you are looking for.

Find Data

Search our Canadian datasets by applying the filters below

Topics Choose some options	Product Group Choose some options	Data Provider Choose some options	
Product Title <input type="text"/> <small>Add part, or all of the title</small>	Geographies Choose some options	Years within data <input type="text"/> <small>i.e. 2006 1976</small>	Items per page 20
<div>Apply Filters</div> <div>Reset Filters</div>			

**Want to learn more
about how to
use the catalogue?**

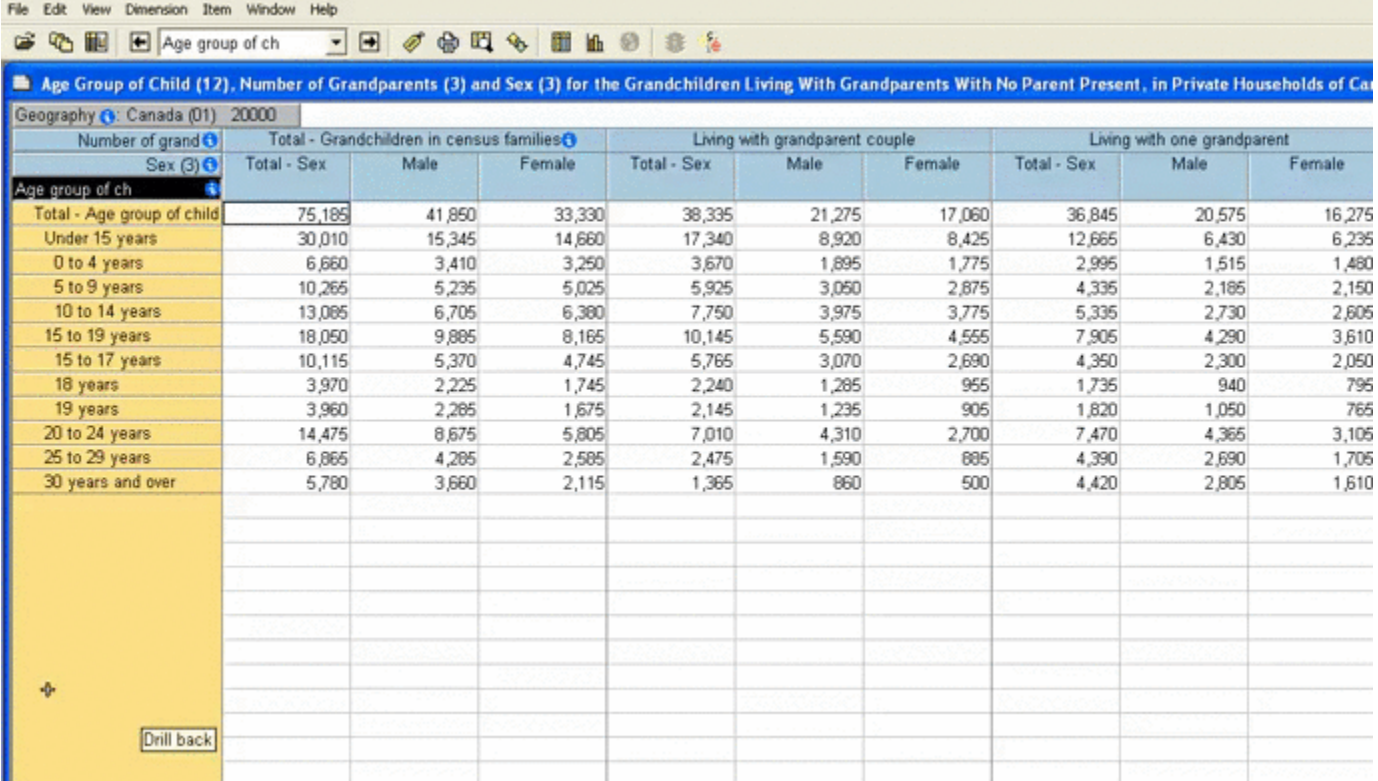
Check out our "[How to Find Data](#)" page



Beyond 20/20

What to use it for:

- Many tables are only available in .IVT table format
- StatsCan software
- Can be used to manipulate multi-dimensional tables and zero in on the data you need before bringing data into excel



The screenshot shows the StatsCan software interface. The title bar includes 'File', 'Edit', 'View', 'Dimension', 'Item', 'Window', and 'Help'. Below the title bar is a toolbar with various icons. The main window displays a table titled 'Age Group of Child (12), Number of Grandparents (3) and Sex (3) for the Grandchildren Living With Grandparents With No Parent Present, in Private Households of Canada'. The table has a hierarchical structure with dimensions for 'Number of grand', 'Sex (3)', and 'Age group of ch'. The data is presented in a multi-dimensional format with columns for 'Total - Sex', 'Male', and 'Female' for different categories. The table includes a 'Drill back' button at the bottom left.

Number of grand	Total - Sex	Male	Female	Total - Sex	Male	Female	Total - Sex	Male	Female
Sex (3)									
Age group of ch									
Total - Age group of child	75,185	41,850	33,330	38,335	21,275	17,060	36,845	20,575	16,275
Under 15 years	30,010	15,345	14,660	17,340	8,920	8,425	12,665	6,430	6,235
0 to 4 years	6,660	3,410	3,250	3,670	1,895	1,775	2,995	1,515	1,480
5 to 9 years	10,265	5,235	5,025	5,925	3,050	2,875	4,335	2,185	2,150
10 to 14 years	13,085	6,705	6,380	7,750	3,975	3,775	5,335	2,730	2,605
15 to 19 years	18,050	9,885	8,165	10,145	5,590	4,555	7,905	4,290	3,610
15 to 17 years	10,115	5,370	4,745	5,765	3,070	2,690	4,350	2,300	2,050
18 years	3,970	2,225	1,745	2,240	1,285	955	1,735	940	795
19 years	3,960	2,285	1,675	2,145	1,235	905	1,820	1,050	765
20 to 24 years	14,475	8,675	5,805	7,010	4,310	2,700	7,470	4,365	3,105
25 to 29 years	6,865	4,285	2,585	2,475	1,590	885	4,390	2,690	1,705
30 years and over	5,780	3,680	2,115	1,365	860	500	4,420	2,805	1,610



Beyond 20/20

**Want to learn more about
using Beyond 20/20?**

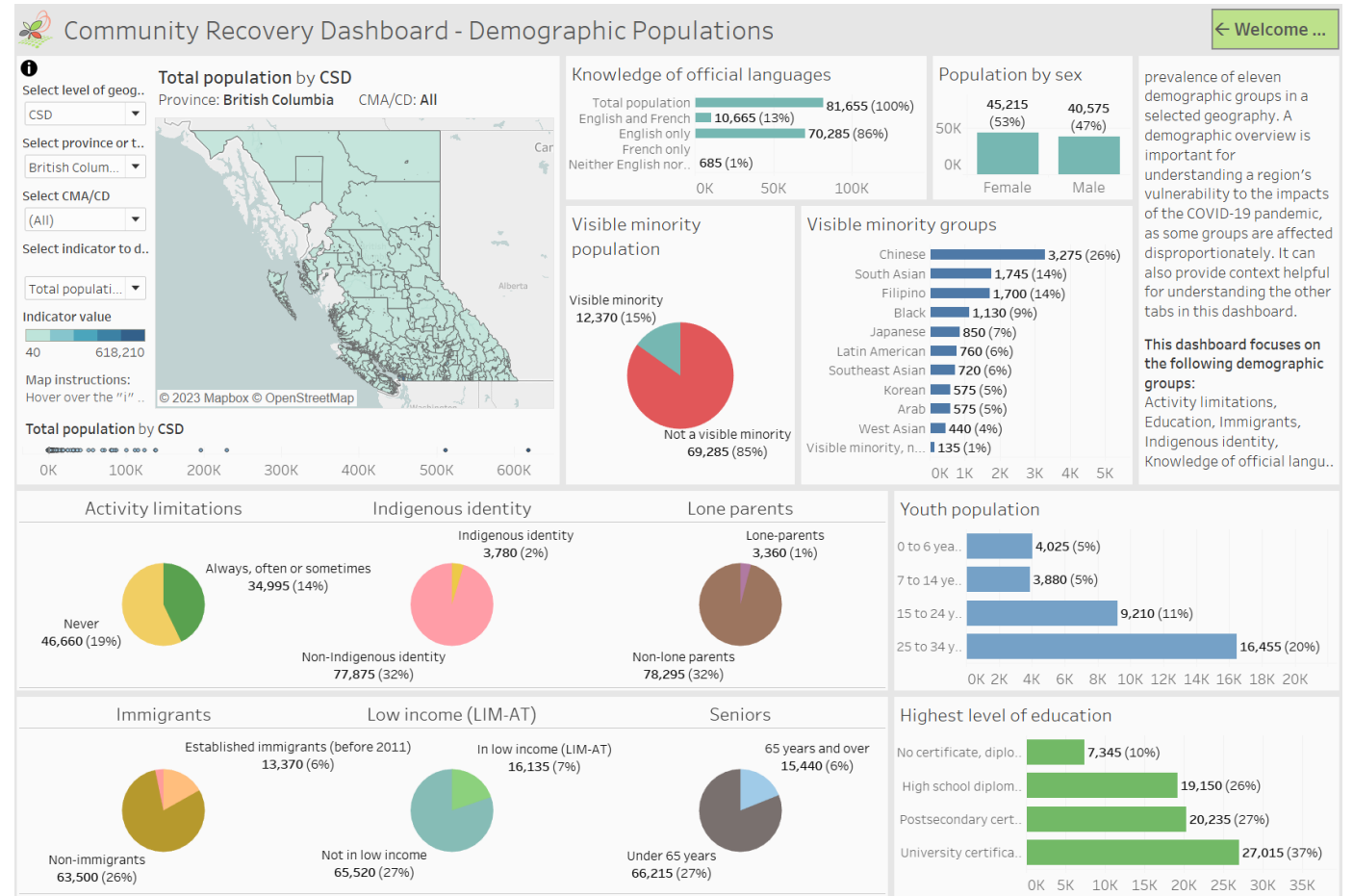
Check out our [Beyond 20/20
Resources](#) on the CDP Website



Tableau

What to use it for:

- Data visualization and data access – We did the work for you!
- Users can access CDP data without having to download an .IVT table
- Easier to see trends and conduct analysis



Tableau

Want to learn more about using Tableau?

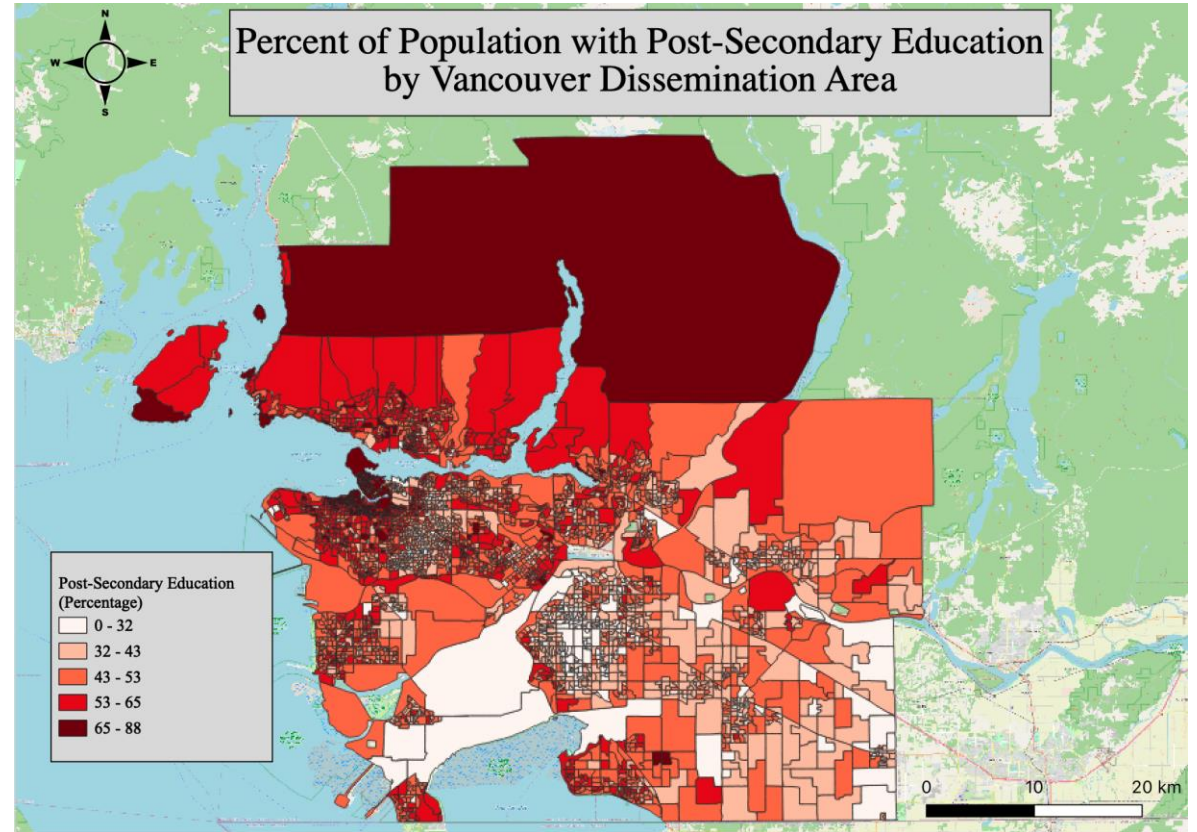
Check out our [Infographics and Dashboard Portal](#), previous webinar on using [Tableau for data visualization](#), and tutorial on the [Community Recovery Dashboard](#)



QGIS

What to use it for:

- Open source mapping software
- Most CDP data can be mapped
- Census data is spatial data – Must be joined to a georeferenced file (shapefile) to map



QGIS

Want to learn more about using CDP data in QGIS?

Check out our tutorial on [bringing data from
the catalogue into QGIS](#)

Need a spatial data file? Visit the [StatsCan
Website](#) to download a boundary file



Want to learn more?

Visit our [webinar archive page](#)

Recently added recordings include:

- [Toward a municipal and local government data strategy](#)
- [Web Scraping Panel Discussion](#)
- [Estimating the Effect of Pandemic-Related Relief Benefits on Income and Other Key Well-Being Indicators](#)
- [Working with the Postal Code Conversion File \(PCCF\)](#)

Working on a project that uses CDP data? Want to share your work in a webinar format?
Let us know!



Thanks for listening!
Contact us any time with questions.

www.communitydata.ca

information@communitydata.ca



Community Data Program

Enabling communities across Canada to measure and track local well-being