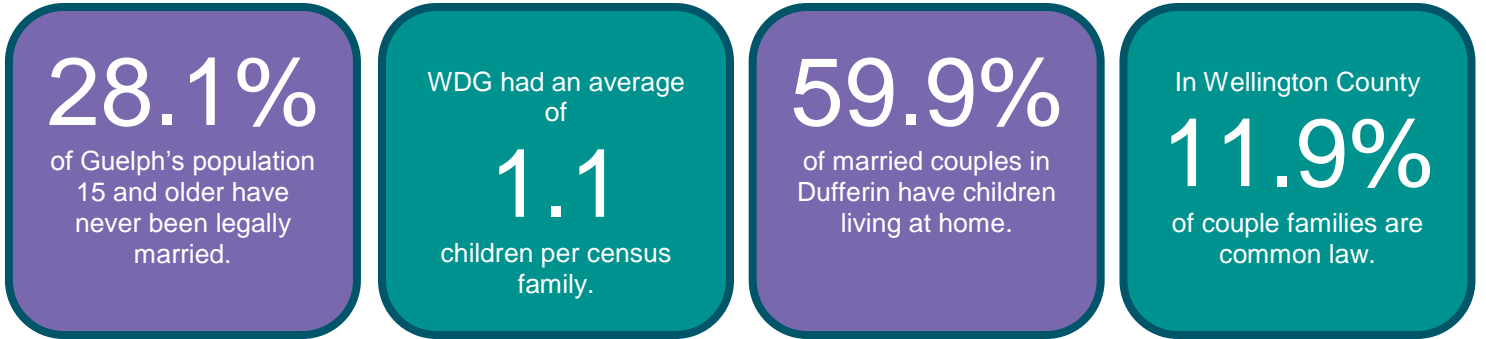
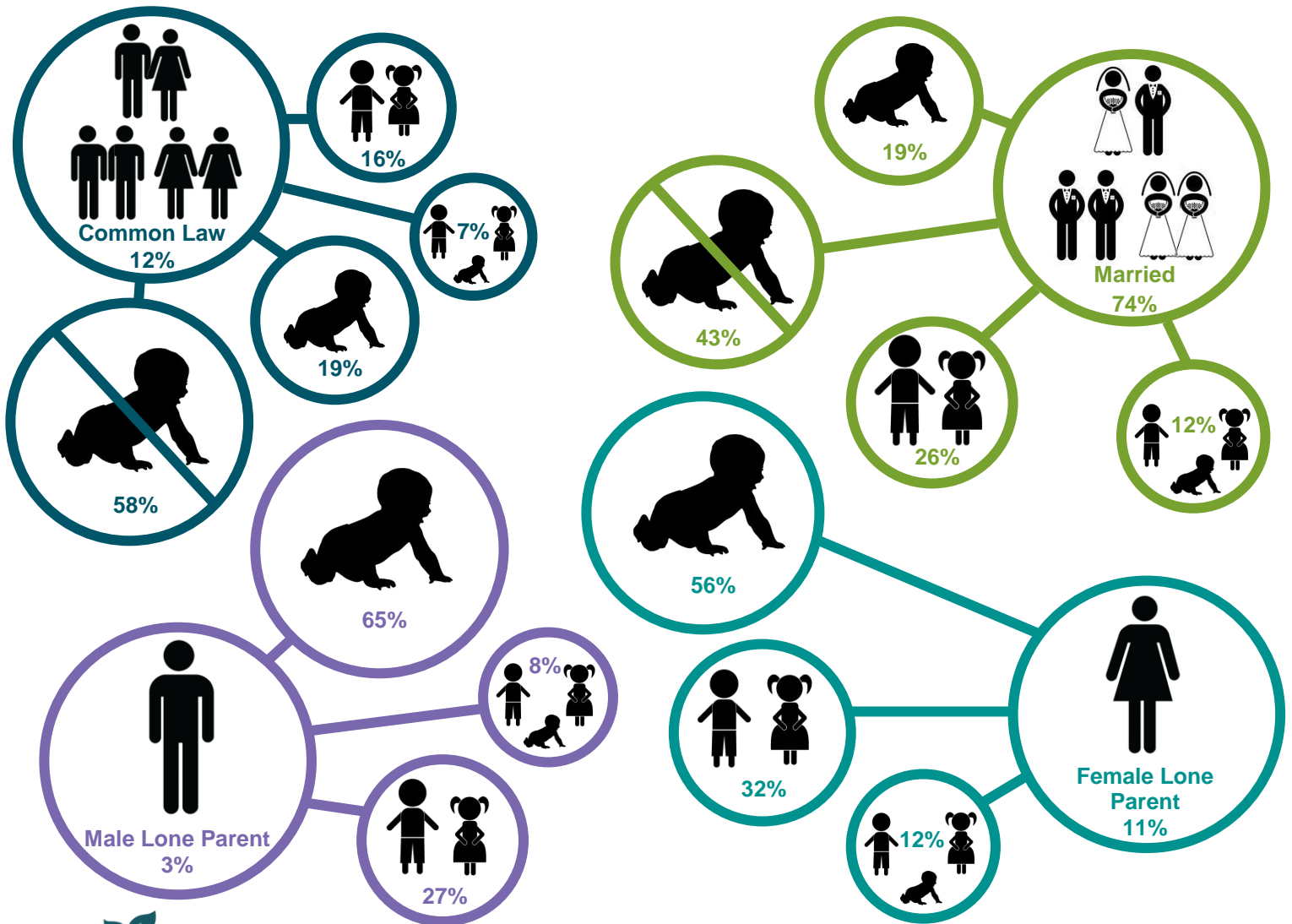


# 2011 CENSUS BULLETIN: Marriage & Families

This report summarizes the family, household and marital status data for Wellington, Dufferin, and Guelph (WDG). In 2011, our area was home to 75,510 census families. In WDG, 61.1% of people aged 15 and over were married, down from 62.1% in 2006. The number of children aged 25+ living at home in WDG increased by 14% since 2006.



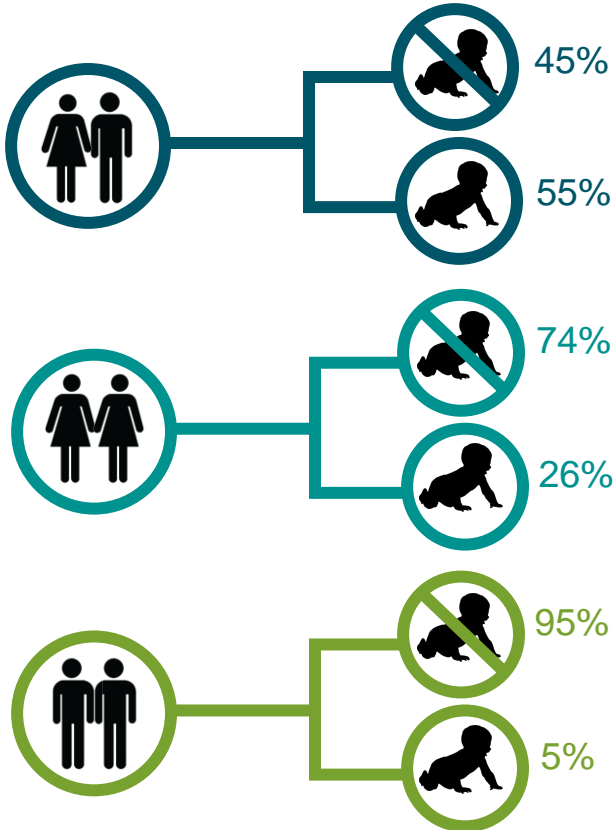
## WDG Marital Status by Presence of Children At Home



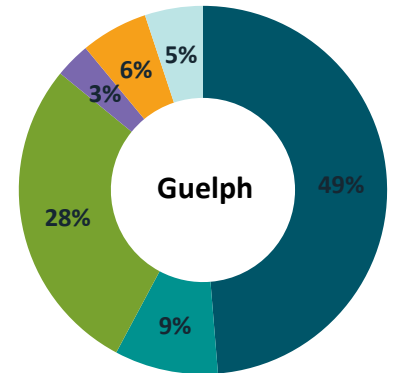
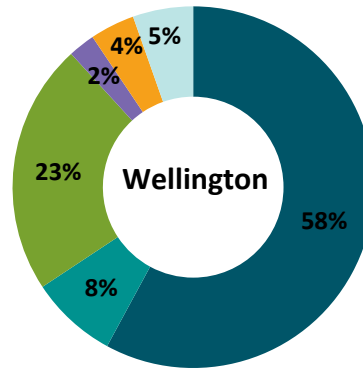
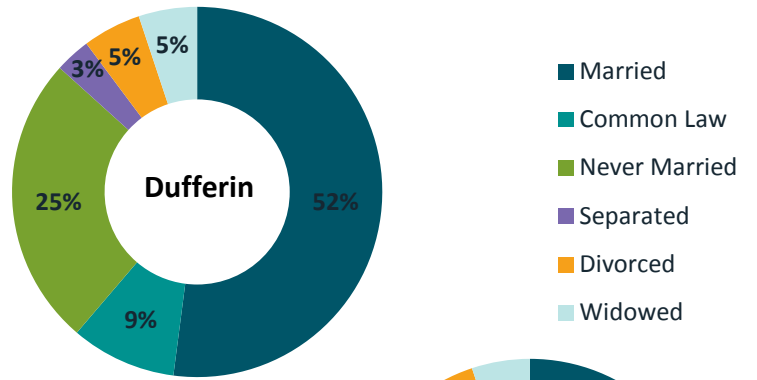
**Did you know...**

A census family refers to a married or common law couple (same sex or opposite sex) with or without children, or a lone parent family.

**Couples in the Guelph Census Metropolitan Area by Presence of Children**



**Marital Status in WDG**



**Did you know...**

The percentage of divorced individuals aged 15+ decreased across WDG between 2006 and 2011:

**Dufferin's** divorced population declined from 7.2% in 2006 to 5.1% in 2011.

**Wellington** declined from 5.7% to 4.0%.

**Guelph** declined from 7.2% to 5.9%

**Private Households in WDG by Household Size**

