

Release of 2006 Census results Population and Dwelling Counts

Population

- The 2006 population of Toronto is 2,503,281, 8% of Canada's total population of 31,612,897. This does not include the Census undercoverage, which is discussed below.
- Between the 2001 and 2006 Censuses Toronto's population grew by 21,787 residents, an increase of 0.9%.
- The 2006 population of the GTA is 5,555,912, 18% of Canada's population. The City of Toronto accounts for 45% of the GTA's population.
- Between the 2001 and 2006 Censuses, the GTA's population grew by 474,086 persons, an increase of 9.3%. Toronto accounted for about 5% of the GTA's growth.
- The GTA is growing most rapidly in the Regional municipalities around Toronto. The Regions grew between 10% and 22%, while Toronto's population grew by only 0.9%.
- Toronto's population grew more slowly between 2001 and 2006 at 0.9% than it did between 1996 and 2001 at 4.0% and between 1991 and 1996 at 4.8%.
- The provincial Growth Plan for the Greater Golden Horseshoe (GGH) contains population forecasts to 2031 "that will be used for planning and managing growth in the GGH," including forecasts for 2011. The rate of growth to 2006 can be estimated as the compounded 5-yearly rate required to reach the forecasted population from 2001 to 2011. For Toronto, this rate is 3.2% and for the GTA it is 9.2%.
- Between 2001 and 2006 Toronto's growth rate of 0.9% fell well below the GGH forecasted rate of 3.2%, whereas growth in the GTA at 9.3% closely matched the forecasted rate.

- Population projections used for the development of Toronto's Official Plan showed a projected 2006 population of 2,638,505 with a growth rate of 5% between 2001 and 2006 (see "Flashforward: Projecting Population and Employment to 2031 in a Mature Urban Area", p. 98), which is much greater than reported in the 2006 Census.
- The slower than expected growth may reflect the possibility that the Census may have missed more people than is usual. The data show a large difference of 61,270 units (5.9% of the total stock) between the total dwelling count and 'private dwellings occupied by usual residents.' The 2001 Census only showed 22,475 such units (2.3% of the total stock). The suggestion is that much of the difference is made up of vacant units. If, however, these units were occupied by people who did not respond to the Census, and the difference between total units and 'private dwellings occupied by usual residents' was similar to 2001, the population growth would be about 4.0%, much closer to the levels expected in the City's projection, and matching the growth from 1996 to 2001.
- Of the GTA regions, Toronto grew the least. York had the fastest rate of growth at 22.4%, followed by Peel - 17.2%, Halton - 17.1%, and Durham at 10.7%.
- Growth rates in the GTA varied widely by municipality (from a decrease of -1.1% to an increase of 71.4%). See Map 1.
- The 5 fastest growing municipalities in the GTA are Milton with a population growth rate of 71%, followed by Brampton at 33.3%, Vaughan at 31.2%, Whitby at 27.1%, Markham at 25.4%.
- Map 2 shows population change across the City. It shows a few areas of high growth, largely where it was planned: Downtown, North York Centre and the Sheppard Corridor, Scarborough Centre, the old stockyards area, Humber Bay and the Motel Strip, and the Morningside Heights neighbourhood in Scarborough. Other parts of the City showed smaller increases than these high growth areas, while many neighbourhoods show a small decline in population.
- Although Statistics Canada makes a great effort to count every person, in each Census a notable number of people are left out for a variety of reasons. For example, people may be traveling, some dwellings are hard to find, and some people simply refuse to participate. Statistics Canada takes this into account and estimates an 'undercoverage' rate for the urban region (CMA) every Census, but not for the City. The 2001 rate for the Toronto CMA was 5.17%. If the rate were the same for 2006, the City's actual population would be 2,632,700.

Dwellings

- The total number of Occupied Private Dwellings in Toronto grew from 943,080 in 2001 to 979,330 in 2006.

Note: dwelling unit change is a net change. It includes new units built since the last Census, new second suites in houses, and units demolished or deconverted.

- Over the last 5 years, dwellings in the GTA increased by 10.4% from 1,780,475 to 1,965,664. Toronto has 50% of the GTA's dwellings.
- Toronto accounted for 5% of the GTA's increase in dwelling units.

- Of all the regions, York Region showed the most growth in dwelling units, an increase of 24%, followed by Halton at 17%, Peel at 16%, Durham at 13% and Toronto at 4%.
- The Census also reports Total Dwelling Units. In Toronto the Total Dwelling Unit count was 1,040,597, which is 61,270 units more than the 979,330 reported as 'occupied by usual residents'. This difference is much higher than the 2001 number of 22,475.

This is the first release of data from the 2006 Census. Total population and dwelling counts were released today. During 2007, the following Census data will be released:

July 17, 2007:	Age and Sex
September 12, 2007:	Marital status (including common-law status) Families and households Housing and shelter costs ² (including dwelling characteristics)
December 4, 2007:	Language Mobility and migration Immigration and citizenship

Prepared by:
Policy and Research, City Planning Division

Contact for further information:
Peter Moore, City Planning, Research and Information: 416-392-8806
Alan Meisner, Social Policy Analysis and Research: 416-392-3999

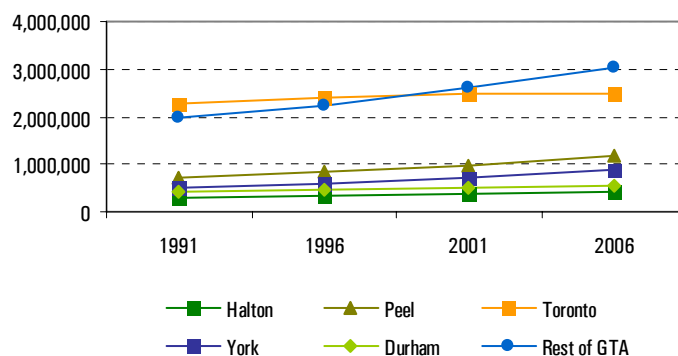
Date: March 13, 2007

Population, 1991-2006, GTA and Regional Components

Municipality	1991	1996	2001	2006	Change		
					1991-1996	1996-2001	2001-2006
GTA	4,235,756	4,628,883	5,081,826	5,555,912	393,127	452,943	474,086
Toronto	2,275,771	2,385,421	2,481,494	2,503,281	109,650	96,073	21,787
Rest of the GTA	1,959,985	2,243,462	2,600,332	3,052,631	283,477	356,870	452,299
Halton	313,136	339,875	375,229	439,256	26,739	35,354	64,027
Peel	732,798	852,526	988,948	1,159,405	119,728	136,422	170,457
York	504,981	592,445	729,254	892,712	87,464	136,809	163,458
Durham	409,070	458,616	506,901	561,258	49,546	48,285	54,357

Source: Statistics Canada, Censuses, 1991-2006

Population



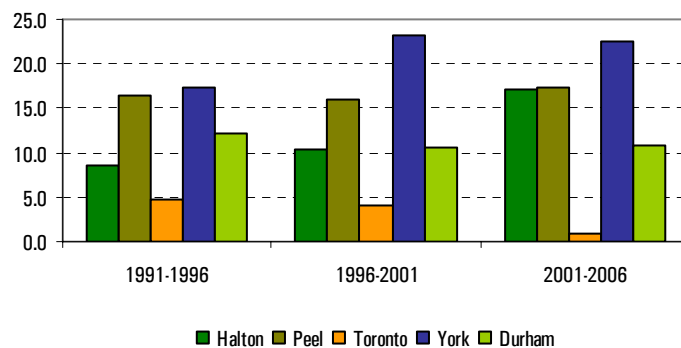
Growth Rates, 1991-2006, GTA and Regional Components

Municipality	1991-1996	1996-2001	2001-2006	Forecasted*
				2001-2006
GTA	9.3	9.8	9.3	9.2
Toronto	4.8	4.0	0.9	3.2
Rest of the GTA	14.5	15.9	17.4	14.6
Halton	8.5	10.4	17.1	15.5
Peel	16.3	16.0	17.2	13.2
York	17.3	23.1	22.4	18.1
Durham	12.1	10.5	10.7	11.6

Source: Statistics Canada, Censuses, 1991-2006

*Based on the forecasts in the Growth Plan for the Greater Golden Horseshoe (Schedule 3).

Percent Change in Population



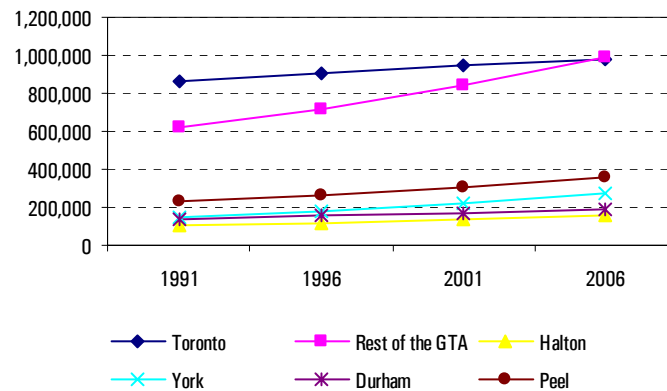
Occupied Dwelling Units, 1991– 2006, GTA and Regional Components

Municipality	1991	1996	2001	2006	Change		
					1991-1996	1996-2001	2001-2006
GTA	1,487,260	1,619,345	1,780,475	1,965,664	132,085	161,130	185,189
Toronto	864,550	903,580	943,080	979,330	39,030	39,500	36,250
Rest of the GTA	622,710	715,765	837,395	986,334	93,055	121,630	148,939
Halton	106,420	118,155	133,665	156,947	11,735	15,510	23,282
Peel	229,670	265,935	308,845	359,042	36,265	42,910	50,197
York	150,485	177,575	223,170	275,673	27,090	45,595	52,503
Durham	136,135	154,100	171,715	194,672	17,965	17,615	22,957

Source: Statistics Canada, Censuses, 1991-2006

Note: Dwelling units refer to Occupied Private Dwellings.

Occupied Dwelling Units



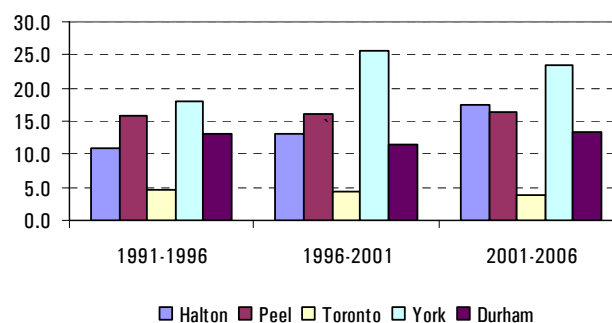
Percent Change in Occupied Dwelling Units, 1991-2006, GTA and Regional Components

Municipality	1991-1996	1996-2001	2001-2006
GTA	8.9	10.0	10.4
Toronto	4.5	4.4	3.8
Rest of the GTA	14.9	17.0	17.8
Halton	11.0	13.1	17.4
Peel	15.8	16.1	16.3
York	18.0	25.7	23.5
Durham	13.2	11.4	13.4

Source: Statistics Canada, Censuses, 1991-2006

Note: Dwelling units refer to Occupied Private Dwellings.

Percent Change in Occupied Dwelling Units



GTA Population and Percent Change by Municipality, 1996-2006

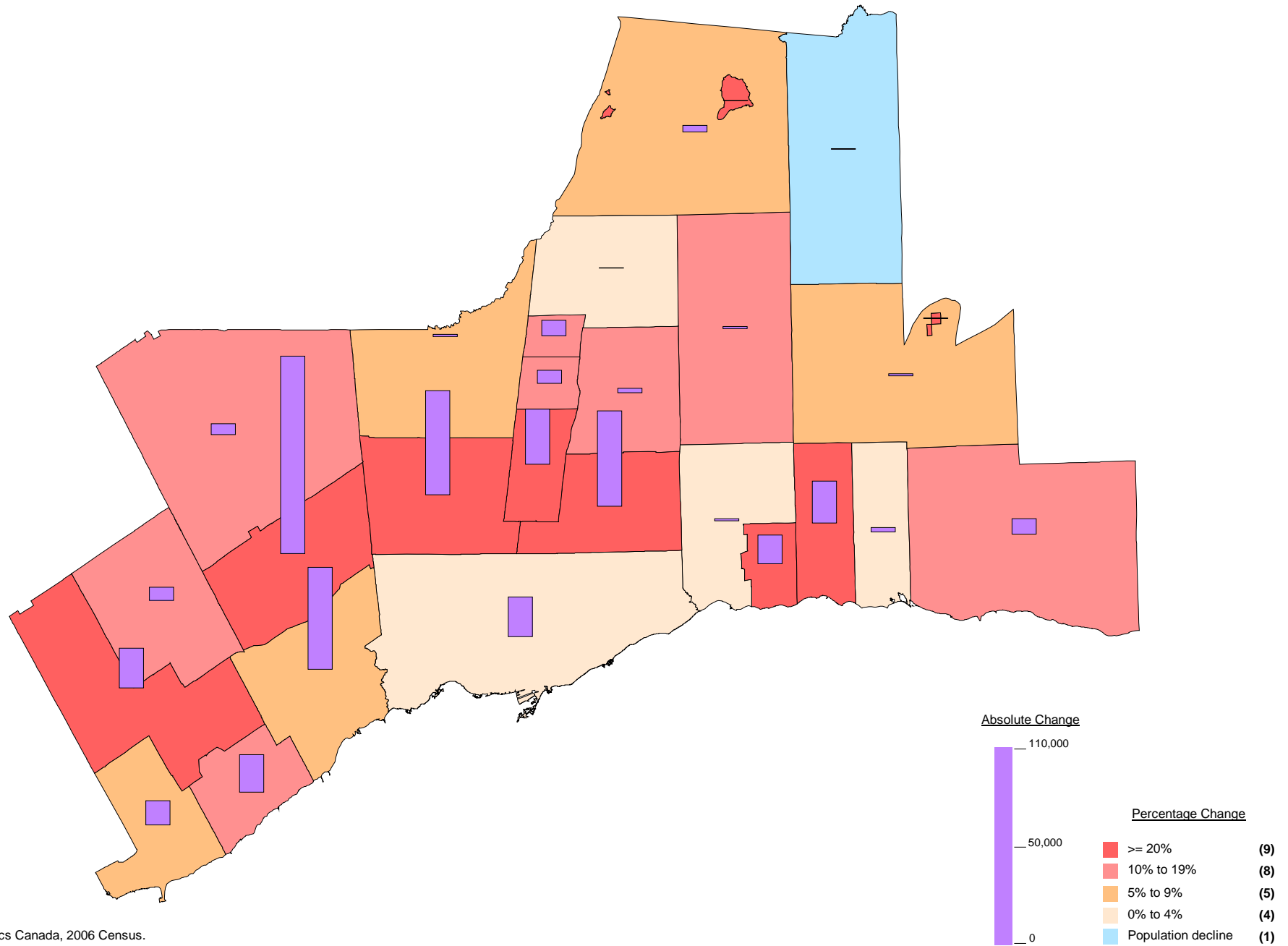
Municipality	1996	2001	2006*	Percent Change	
				1996-2001	2001-2006
Toronto	2,385,421	2,481,494	2,503,281	4.0	0.9
Durham	458,616	506,901	561,186	10.5	10.7
Ajax	64,430	73,753	90,167	14.5	22.3
Brock	11,705	12,110	11,979	3.5	-1.1
Clarington	60,615	69,834	77,820	15.2	11.4
Oshawa	134,364	139,051	141,590	3.5	1.8
Pickering	78,989	87,139	87,838	10.3	0.8
Scugog	18,837	20,224	21,439	7.4	6.0
Uxbridge	15,882	17,377	19,169	9.4	10.3
Whitby	73,794	87,413	111,184	18.5	27.2
York	592,445	729,254	892,359	23.1	22.4
Aurora	34,857	40,167	47,629	15.2	18.6
East Gwillimbury	19,770	20,555	21,069	4.0	2.5
Georgina	34,978	39,536	42,346	13.0	7.1
King	18,223	18,533	19,487	1.7	5.1
Markham	173,383	208,615	261,573	20.3	25.4
Newmarket	57,125	65,788	74,295	15.2	12.9
Richmond Hill	101,725	132,030	162,704	29.8	23.2
Vaughan	132,549	182,022	238,866	37.3	31.2
Whitchurch-Stouffville	19,835	22,008	24,390	11.0	10.8
Peel	852,526	988,948	1,159,405	16.0	17.2
Brampton	268,251	325,428	433,806	21.3	33.3
Caledon	39,893	50,595	57,050	26.8	12.8
Mississauga	544,382	612,925	668,549	12.6	9.1
Halton	339,875	375,229	439,256	10.4	17.1
Burlington	136,976	150,836	164,415	10.1	9.0
Halton Hills	42,390	48,184	55,289	13.7	14.7
Milton	32,104	31,471	53,939	-2.0	71.4
Oakville	128,405	144,738	165,613	12.7	14.4
GTA	4,628,883	5,081,826	5,555,487	9.8	9.3

Source: Statistics Canada, Censuses, 1996-2006

*2006 population count does not include First Nations Reserves:

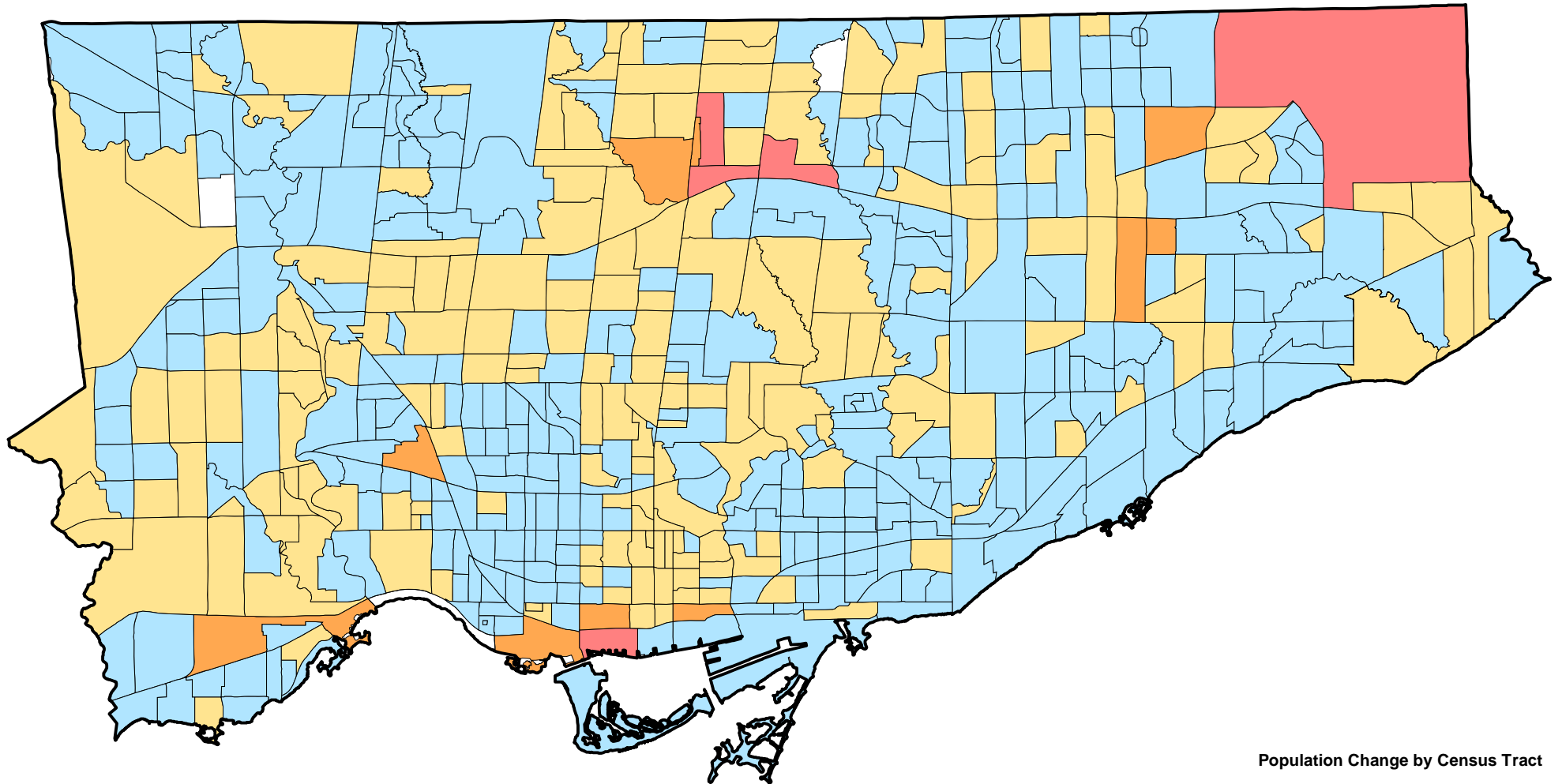
Chippewas of Georgina Island First Nations = 353

Mississaugas of Scugog Island = 72



Source: Statistics Canada, 2006 Census.





Population Change by Census Tract

■	3,000 to 14,472	(5)
■	1,500 to 2,999	(10)
■	1 to 1,499	(182)
■	No change (blank)	(3)
■	-1 to -1,559	(331)

Data distributed by 2006 Census Tract.

