



Community Data Program

Enabling communities across Canada to measure and track local well-being

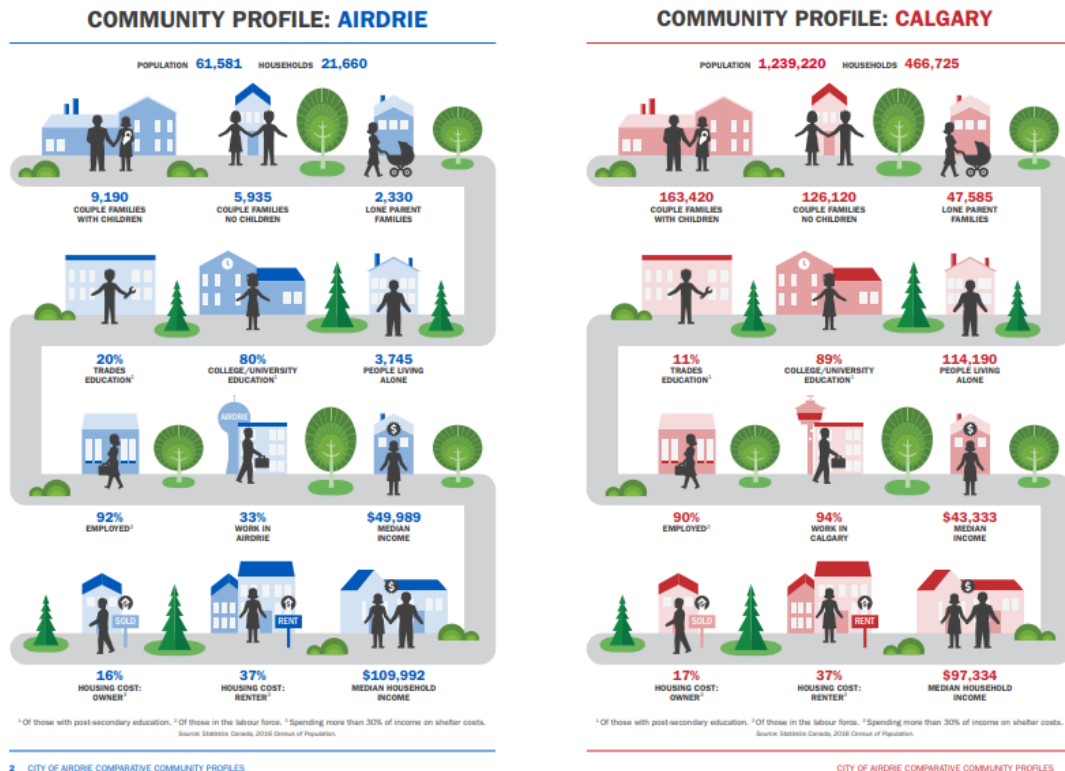
Community Snapshot

City of Airdrie Comparative Community Profiles



Summary

The Social Planning team at the City of Airdrie has assembled a series of community profiles to provide brief comparisons of Airdrie versus Calgary, Red Deer, St. Albert, Grande Prairie, Lethbridge, and Medicine Hat. These profiles display the demographic infographics of each municipality. All data in the community profiles (Unless otherwise noted) is extracted from the 2016 Census of Population and accessed through the Community Data Program.



[Click here to view City of Airdrie Comparative Community Profiles](#)

Practitioner

Chris Esselmont is a social planner at the City of Airdrie. He used the Community Data to develop these community profiles.

The city of Airdrie is a member organization of the Calgary Data Consortium as part of the Community Data Program.

Community data used

- Census of population 2016, Statistics Canada



The Community Data Program is an initiative of the Canadian Community Economic Development Network