



# Community Data Program

Enabling communities across Canada to measure and track local well-being



Canadian  
CED Network



# Overview of the program

1. What is the Community Data Program?
2. What datasets are available through the program?
3. What are some tools and program resources?
4. What have members done with the data?

} Program

5. Welcome to [communitydata.ca](https://communitydata.ca)
6. How do I find data?
7. How do I use the data?

} Website



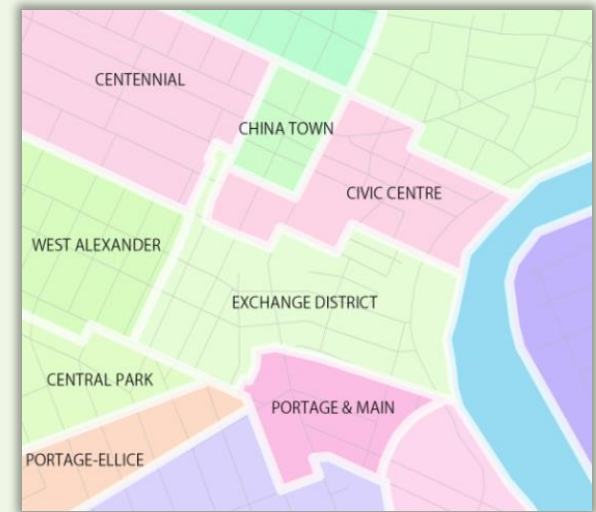


# WHAT IS THE COMMUNITY DATA PROGRAM?



# The CDP

- Created to track poverty in neighbourhoods
- Shares cost of data
- Focuses on small area geography from Statistics Canada and private sector sources
- Helps analyze and report on socioeconomic trends
- Hosted by the Canadian Community Economic Development Network (CCEDNet)



# The Consortium Model

- A consortium: Legal group of organizations focused on the implementation of a public service goal
- There is one consortium for each local region
  - Examples include Red Deer, Waterloo Region, York Region, New Brunswick and Winnipeg
- Functions as a Community Development entity
- The Lead for each consortium participates in the leadership and development of the CDP



# Consortium fees and Membership fees

- The consortium lead pays consortium fees based on the population of their catchment area
- Cost-sharing models for consortium fees differ widely between consortia
- All member organizations pay \$125 annually to CCEDNet
- Fee may be collected by lead or by CCEDNet



# The Community Data Network



# Examples of Members

Municipal governments

Local United Way chapters

Community health centres

Social planning councils

School boards

Immigration and youth services

Libraries

Economic development agencies



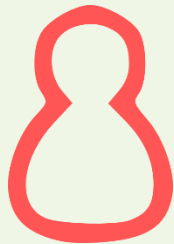


# The Community Data Network

Community Data Consortia: 30+

Consortium Member Organisations: 400+

Registered Individuals: 1,900+

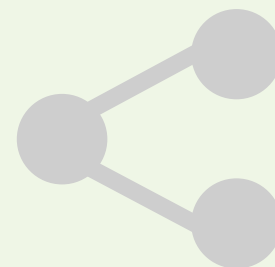


# What can you do with the CDP?

1. Monitor and report on trends
2. Acquire customized data
3. Reduce costs
4. Build capacity
5. Advocate for community data



# What do members get?



Data	Capacity building	Networking
Direct access to web-based customized community data	Data analysis tools and training	National network with teleconferences and annual face-to-face events





# **WHAT DATASETS ARE AVAILABLE THROUGH THE PROGRAM?**

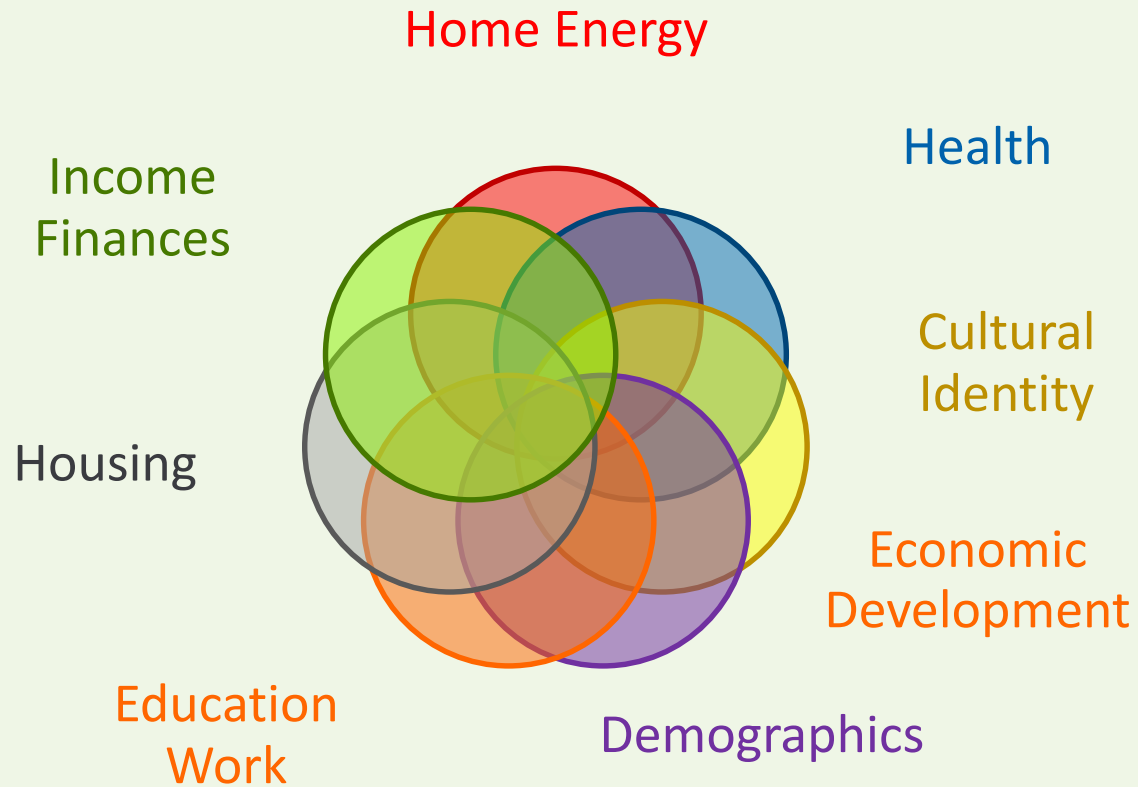


# Broadly speaking...

- Smallest possible geographic scale
  - Always sub-provincial
  - Lower- and upper-tier municipalities
  - Neighbourhood-level where possible (DA, CT)
- Custom Statistics Canada data
  - Custom cross-tabulations
  - Custom boundaries
- Analysis, reporting, visualization tools
- Links to open data



# Themes



# Census and Taxfiler (T1FF) data

## Census and NHS

Standard Census geographies and custom geographies

- Community profiles
- Target group profiles
- Cross-tabulations (standard and custom)
- Community Poverty Project (custom for CDP)

## Taxfiler (T1FF)

Standard postal geographies and some Census geographies

- Family data
- Individual data
- Seniors
- Financial data and charitable donations
- Migration
- Income inequality and working poverty (custom for CDP)



# Other small area data

## Canadian Business Counts

Census Tract and Census Subdivision

## Credit Report Characteristics

Six-digit Postal Code

## Shelter Capacity Report (ESDC)

Municipalities

## Postal Code Conversion File

## Building Permits

Census Subdivision

## Insolvency Data

Forward Sortation Area





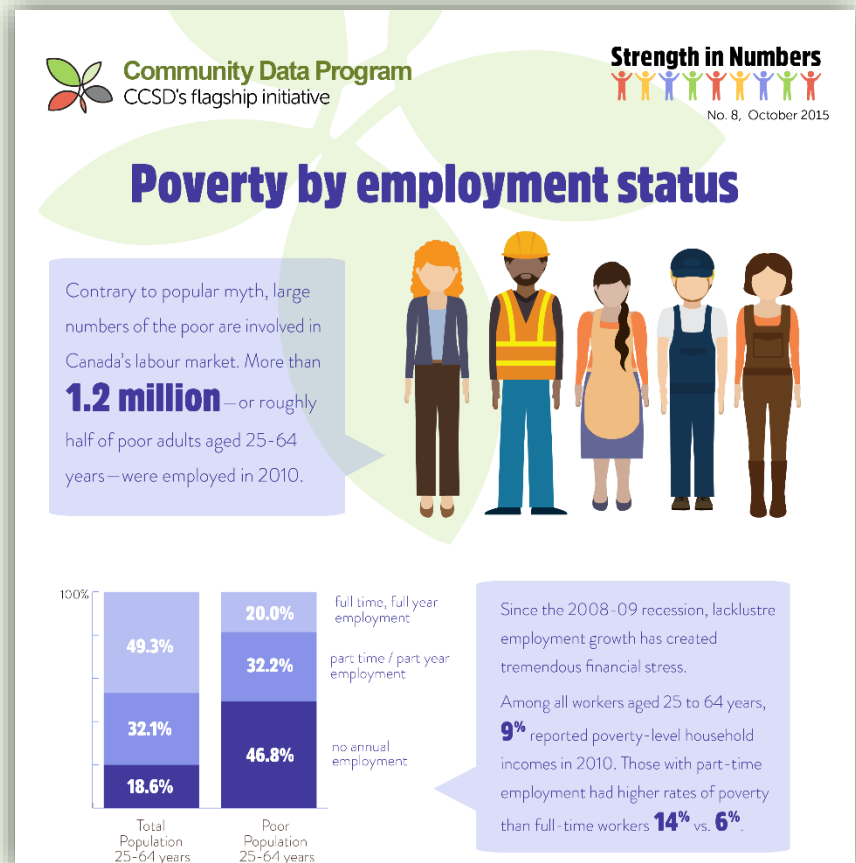


# **WHAT ARE SOME TOOLS AND PROGRAM RESOURCES AVAILABLE?**



# Community Reporting

- Strength-in-Numbers Series
- Community Snapshots
- Links to Member Publications
- Links to External Data Resources



# DIY Infographics



## List of fillable infographics:

- Village of 100 (2016)
- Regional Profile (2016)
- Education (2016)
- Income (2016)
- Employment (2016)
- Housing (2016)

## Online infographic tools:


- Piktochart (free limited selection of templates)
- Infogr.am (free basic version)
- Visme (free basic version)
- Easel.ly (free simple layouts and charts)

- Templates and tools to visually report on a number of important social development themes
- Easy to use and free for members



# Data Map Access Tool

- Tool to highlight important social development themes
- User-friendly solution to easily find, select, and download data for your municipality



### Community Data Downloads

Clicking on the map will generate a series of downloadable Excel files offering customized data sets that represent the CDP's most popular themes and topics. These Excel files contain several geographies corresponding to the selected census division (CD), including all census subdivisions located within the CD, and all custom neighbourhood geographies, where these have been created for selected CDP consortia.

### Other Community Data Program Resources

- Strength in Numbers Fact Sheets
- DIY Infographics
- Orientation Video
- Search Data by Theme
- Community Snapshots
- Webinars

# Webinars

- Four themes



## **Program Orientation**

Learn how to use the CDP catalogue and Beyond 20/20 software



## **CDP Product Profiles**

Get insight into CDP data products, including product methodology, examples of use, and limitations of use



## **Transforming Data into Intelligence**

Make use of analytical tools, data visualization, and infographics



## **Data Charrettes**

Expand your knowledge with live workshops led by a local consortium demonstrating the use of the CDP to access data on a particular topic

- Generally range from 60 – 90 mins
- Host up to 100 participants
- Real-time data discussions

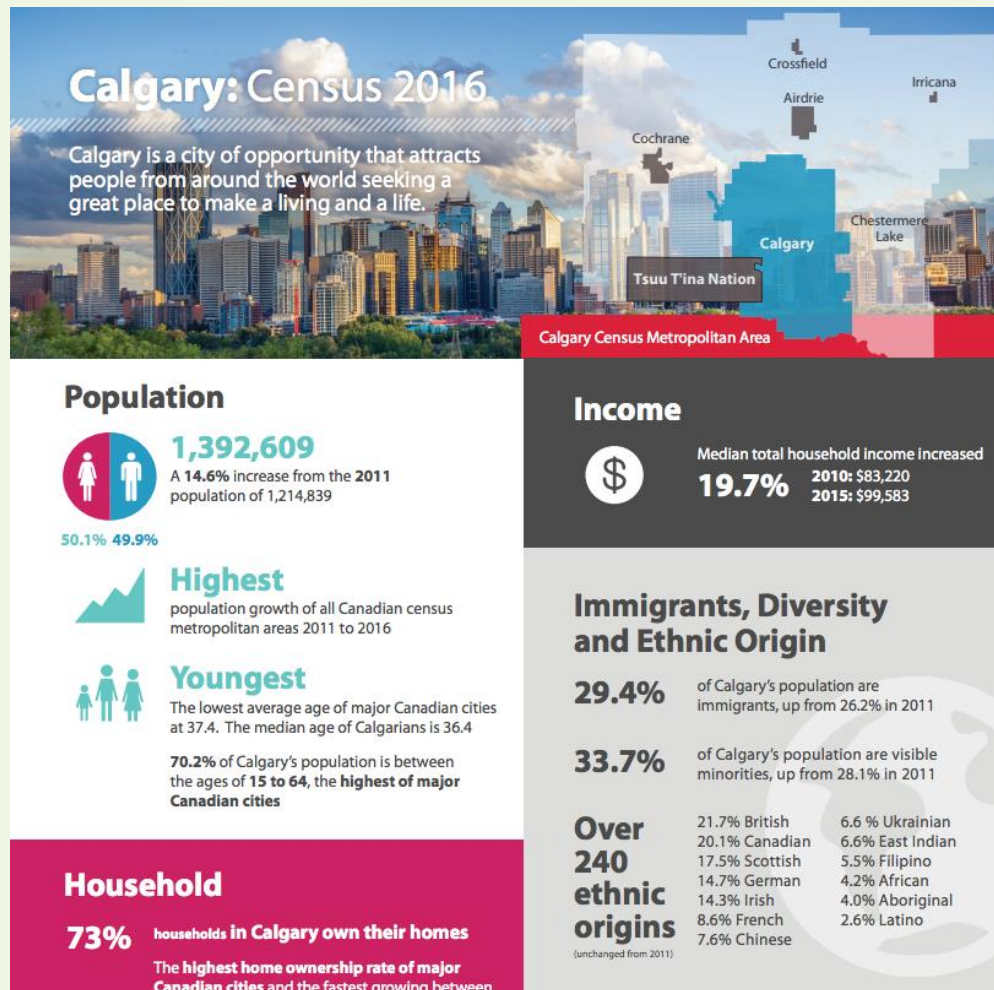




**WHAT HAVE OTHER MEMBERS  
DONE WITH THE DATA?**



# City of Calgary: Economic Development Census 2016 Infographic



<https://www.calgaryeconomicdevelopment.com/assets/Uploads/Calgary-Census-2016-Infographic.pdf>





# Wellington Dufferin Guelph: Report Cards on the Well-Being of Children

<http://www.wdgreportcard.com/en/index.aspx>



The screenshot shows the homepage of the "Wellington - Dufferin - Guelph Report Cards on the Well-Being of Children" Data Portal. The header includes the organization's logo, name, and a search bar. A navigation bar contains links for "About", "Data Portal", "Our Reports", and "Get Help". The main content area is titled "Welcome to Our Data Portal" and features a large bar and line chart with a magnifying glass. A sidebar on the left lists categories: "Data Portal Home", "Education", "Health", "Living Environment", "Safety", and "Social Relationships". Below this is a "Contact" section with the text "Looking for more information? Contact the Report Card Coalition today! Email Us". The main content area also includes a "Contact" section with the same text. The "Education" section is highlighted with a purple button, and the "Health" section is highlighted with a red button. The "Education" section text reads: "Learn about how children are doing in the early years, including local child care availability and vulnerability in early childhood. Explore data on school experiences including student achievement, participation in school, high school completion, and the transition to post-secondary." The "Health" section text reads: "Find data on child and youth disease, infant and maternal health, nutrition and weight, oral health, recreation participation, mental health, sedentary behaviour, sexual health, sleep, and substance use."



# Simcoe Muskoka: Health Stats

<http://www.simcoemuskokahealthstats.org>

## The social and health IMPACTS of LOW INCOME in Simcoe Muskoka



### LIFE EXPECTANCY

Life expectancy is lower for the population in lower income groups. Females in the highest income groups live two and a half years longer (82.1 years) than females in the lowest income groups (83 years). Males in the highest income groups live almost five years longer (80.4 years) than males in the lowest income groups (75.7 years).



### OVERALL HEALTH STATUS

Self-rated health status increases with higher levels of income. Nearly three-quarters (72%) of the population ages 12 years and over in the highest income group rated their health as excellent or very good compared to only about half (53%) of the population in the lowest income group.



### SMOKING

More than one-third (35%) of the adult population (ages 20+) in the lowest income group are reported current smokers compared to almost one in five (19%) in the highest income group.



### MENTAL HEALTH

Perceived mental health status increases with higher levels of income. Only 62% of the population ages 12 years and over in the lowest income group rate their mental health as excellent or very good compared to 82% of the population in the highest income group.



### ORAL HEALTH

Twice as many Simcoe Muskoka adults ages 18+ (4 in every 10) living in the lower income groups report missing teeth due to decay or gum disease compared to adults living in the highest income group (2 in every 10).



### HEART DISEASE

The prevalence of self-reported heart disease in Simcoe Muskoka adults (age 50+) in the lowest income group (15%) is more than 1.5 times greater than that of the highest income group (10%).



### DIABETES

The prevalence of self-reported diabetes in Simcoe Muskoka adults (age 50+) in the lowest income group (16%) is double that of the highest income group (8%).





# SHOW ME THE DATA!

[Communitydata.ca/data](http://Communitydata.ca/data)



# Where to find datasets

## Find Data

Search our Canadian datasets by applying the filters below

### Topics

Choose some options

### Product Group

Choose some options

### Data Provider

Choose some options

### Product Title

Add part, or all of the title

### Geographies

Choose some options

### Years within data

i.e. 2006 1976

### Items per page

20

Apply Filters

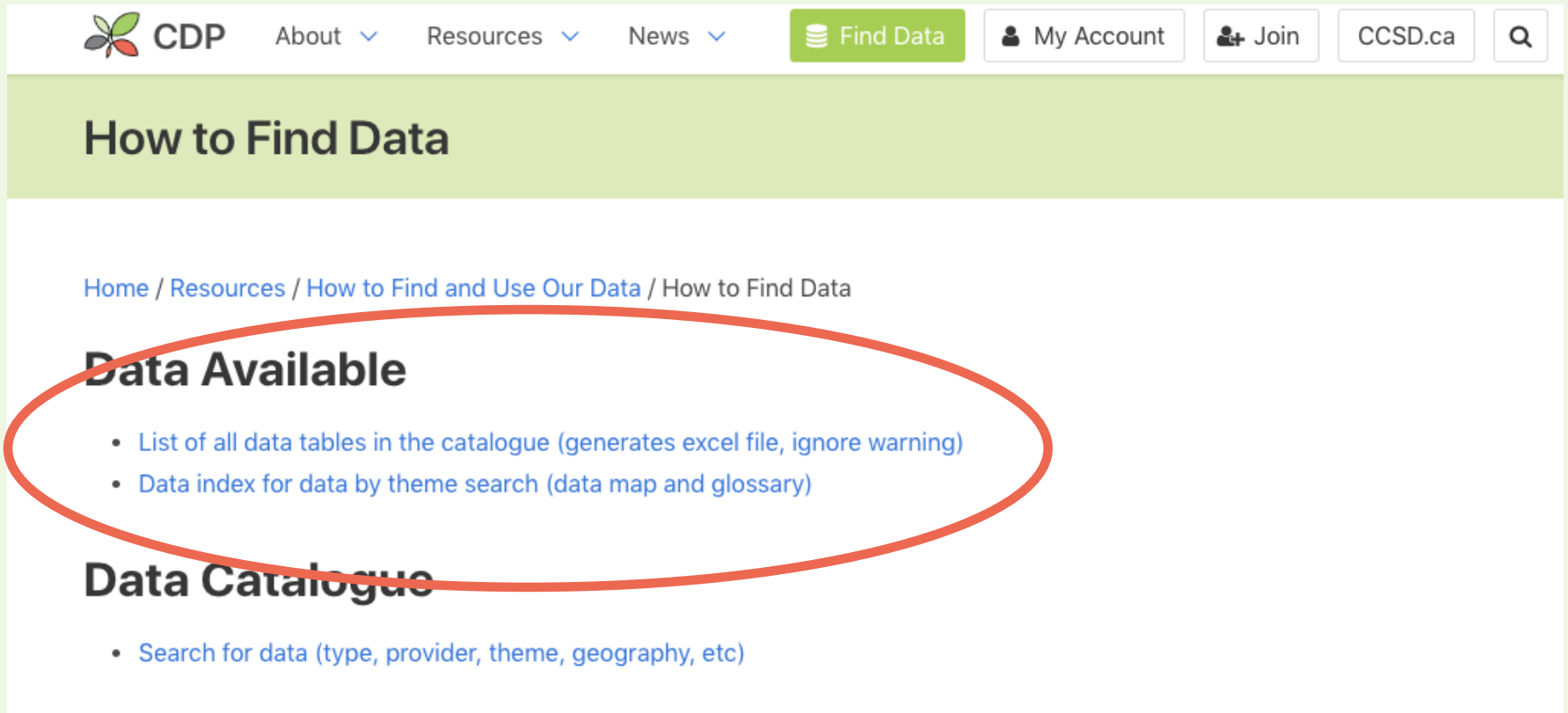
Reset Filters

Displaying 1 - 20 of 936 Products, sorted by post date



Title	Geographies	Years within data	Posted
<a href="#">Income in 2015 (16), Highest certificate, diploma or degree (11), Age groups (11), Sex (3) and Immigrant status and period of immigration (6), for the Population 15 Years and Over in Private Households, 2016 Census</a> PRODUCT GROUP: Census, 2016 - Data tables TOPIC: Cultural identity , TOPIC: Immigration , TOPIC: Demographics , TOPIC: Age, Sex and Population , TOPIC: Education , TOPIC: Highest Certificate, Degree or Diploma , TOPIC: Income , TOPIC: Individual Income	Province and Territory, Census Subdivision, Census Metropolitan Area, Census Division, Census Agglomeration, Aggregate Dissemination Area	2016	06/04/2018
<a href="#">Building Permits, 2017</a> PRODUCT GROUP: Building Permits TOPIC: Building Permits	Province and Territory, Census Subdivision, Census Metropolitan Area, Census Division, Census Agglomeration	2017	05/17/2018

# Guide to everything in the catalogue

[communitydata.ca/resources/how-to-use/find-data](https://communitydata.ca/resources/how-to-use/find-data)



The screenshot shows the top navigation bar of the CDP website with links for About, Resources, News, Find Data, My Account, Join, and CCSD.ca. Below the navigation bar is a green header with the title 'How to Find Data'. The breadcrumb trail reads: Home / Resources / How to Find and Use Our Data / How to Find Data. The 'Data Available' section is circled in red and contains two bullet points: 'List of all data tables in the catalogue (generates excel file, ignore warning)' and 'Data index for data by theme search (data map and glossary)'. Below this is the 'Data Catalogue' section with one bullet point: 'Search for data (type, provider, theme, geography, etc)'.

 CDP   About ▾   Resources ▾   News ▾   Find Data   My Account   Join   CCSD.ca   

## How to Find Data

[Home](#) / [Resources](#) / [How to Find and Use Our Data](#) / [How to Find Data](#)

### Data Available

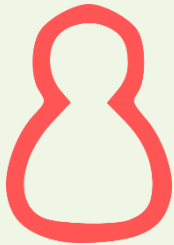
- [List of all data tables in the catalogue \(generates excel file, ignore warning\)](#)
- [Data index for data by theme search \(data map and glossary\)](#)

### Data Catalogue

- [Search for data \(type, provider, theme, geography, etc\)](#)



# Next steps...



Users of an existing Member Organization can register for a free account on the website.



Non-member Organizations can be a part of the Community Data network by joining an existing Data Consortium.



Or start a local Data Consortium as a lead, and create a local network.





# Community Data Program

Enabling communities across Canada to measure and track local well-being

Visit

[www.communitydata.ca](http://www.communitydata.ca)

or

Send us an email at

[information@communitydata.ca](mailto:information@communitydata.ca)

to know more about membership



Canadian  
CED Network

