



TF

Transform

SHARED SERVICE ORGANIZATION

[www.transformssso.ca](http://www.transformssso.ca)

*Leading Innovation. Improving Healthcare.*



# WHO WE ARE

Delivering exceptional customer service to our clients and helping to improve value to Ontario's healthcare system through the following services:

- Supply chain management
- Information Technology
- Information Management
- Health System Transformation
- Project Management



*A regional initiative that will help multiple health-related organizations and hospitals cost-effectively access and share current community data from the Canadian Council on Social Development Community Data Program to assist in decision-making and planning.*

Created to:

- Coordinate access to community data based on the needs of the members
- Build capacity to use data
- Provide a venue for collaboration on local research
- Foster shared measurements to track progress and support community quality of life



Total population: 640,000

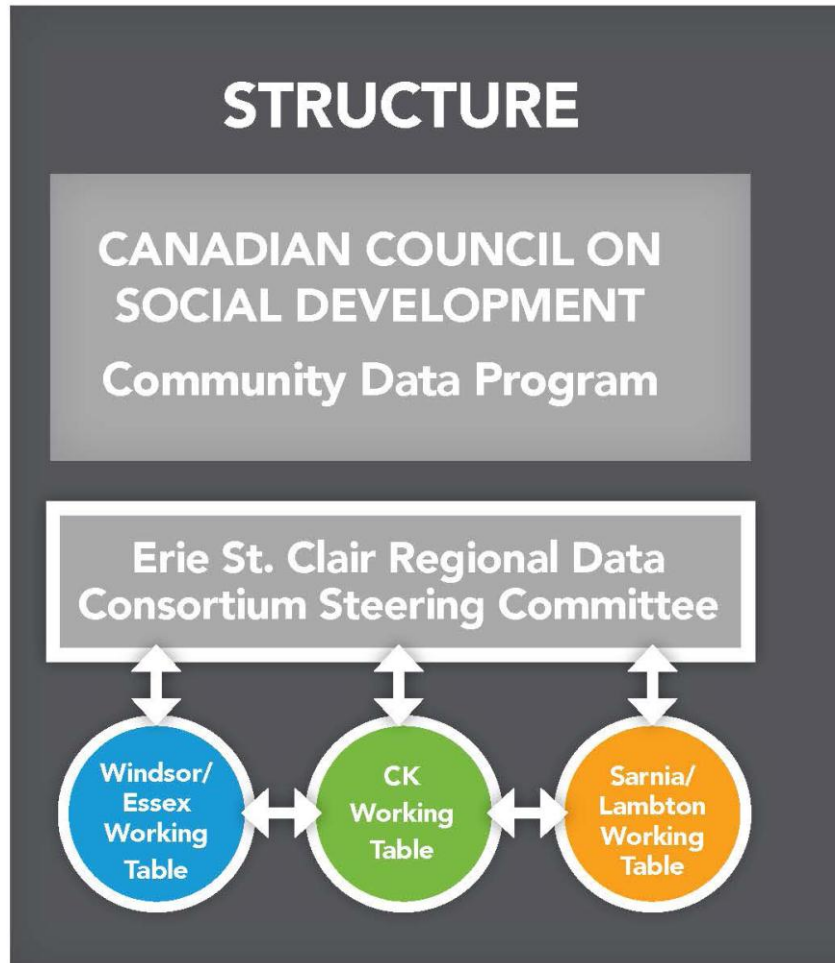
150+ community health service providers

Five hospitals

Provide a total of:

- 907 acute beds
- 313 CCC beds
- 124 rehab beds
- 122 psychiatric beds

Do we want to include LTC?

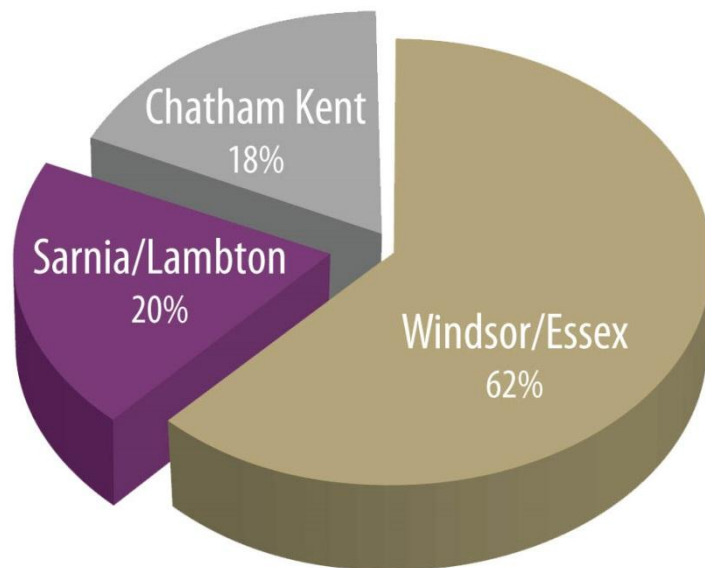


Our final governance structure is in final development – we’re interested in how other Regions are managing their Programs!

- Finalize governance structure and terms of reference
- Establish area working tables
- Begin recruitment of additional ESCRDC members from area health service providers and long-term care facilities

# ESCRDC PARTNERS

# The Erie St. Clair LHIN...



Immigrants (18.1%)  
Seniors (18.5%)  
Francophones (3.3%)  
Aboriginal peoples (2.4%)





# Who we fund...



Hospitals



Long-term care (LTC) homes



Community Care Access Centres (CCAC)



Community support service agencies



Mental health and addictions agencies



Community health centres (CHC)



# Chatham-Kent is a Community of Communities...



## One Tier Government

- 23 Communities
- 5 Primary Urban Centres
- 7 Secondary Urban Centres
- 2 First Nations communities
- 2 Post Secondary Institutions
- 2471 km<sup>2</sup>

# Vision for Chatham-Kent (Council approved Fall 2009)

Chatham-Kent will be the fastest growing sustainable community in Southwestern Ontario

No single organization, however innovative or influential, can accomplish large scale social change - it takes the entire community. We need to focus on CK as a collective, and commit to a common agenda for solving specific challenges and put in place the right supports to align activities.

**CK COUNTS** *Measuring what's important where we live, learn, work and play!*

CK Counts is a planning tool that provides a snapshot on quality of life in CK that reports population indicators in 10 categories. Read CK Counts to see how we are doing as a collective.

## CK COUNCIL DIRECTIONS 2014-2018

### JOBS



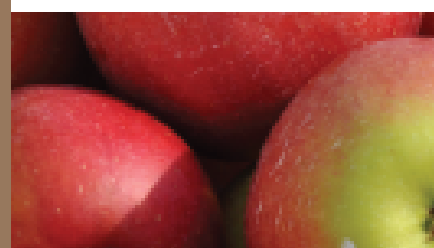
Everyone in Chatham-Kent who wants to work is able to work in meaningful employment

### PEOPLE



Chatham-Kent is a welcoming community where people choose to live, learn, work, and play

### HEALTH



Chatham-Kent is a healthy, active, safe, accessible community within a healthy natural and built environment

## CRITICAL SUCCESS FACTOR FINANCIAL SUSTAINABILITY

The Corporation of the Municipality of Chatham-Kent is financially sustainable

# Measuring what's important where we live, learn, work and play!



### COMMUNITY CONTEXT

**2006-2011 Population Change**  
 OK 4.2%  
 ON +5.7%

**A higher % of seniors live in CK than ON**  
 Since 2006, there has been an 8% increase  
 CK 18%  
 ON 15%

### COMMUNITY BELONGING

3 of 4 people feel a sense of belonging to their local community compared to 2 out of 3 in Ontario and Canada

Median Charitable Donation in CK went up from \$230 in 2011 to \$340 in 2012 (2011=200)

42% of people voted in the last municipal election (2012)  
 YES  
 NO

9.4 of 10 people are satisfied with their general life (2012)

### LEISURE & CULTURE

106 km of walking trails (pathways within parks and trails)

12,000 people engaged in low cost recreational opportunities in 2014 (2013=200)

### HEALTHY POPULATION

1 of 2 people are overweight (2012)

Less people are active in CK (46%) (2012)

1 out of 3 people eat fruits or vegetables 5 or more times a day  
 CK 30%, ON 39%

Fewer people are exposed to tobacco smoke in public spaces  
 CK 9%  
 ON 0%

### HOUSEHOLD FINANCES

Median household income, after taxes \$47,291 (2012)  
 ON \$46,777

Households experienced food insecurity (2012)  
 CK 7%

11% of people in CK receive social assistance (2012)

Median personal income, after taxes \$24,577 (2012)

### LEARNING & EDUCATION

3 out of 4 children enter school ready to learn

Postsecondary Completion Rate  
 CK 61%  
 ON 68%

2 of 5 eligible people (age 15+) are currently in the labour force

### HOUSING

The average price of a home sold in CK \$148,516 (+12.8%)

435 individuals or families experienced homelessness

Social Housing Waitlist  
 2012: 408  
 2013: 429

Increase in the value of building permits issued  
 25%  
 2013

### WORK & ECONOMY

Almost 1 in 5 people in CK report their life as being extremely stressful  
 CK 18%  
 ON 23%

Unemployment rates in CK are decreasing  
 2010: 10.8%  
 2011: 10.5%  
 2012: 10.1%  
 All-time low: 9%

### SAFETY

Violent Crime Index is lower in CK 41 (2012)

Non-violent Crime Index is higher in CK 82 (2012)

Structure Fires  
 200: 182  
 200: 146

### ENVIRONMENT

15% drop in E-waste  
 32% drop in Tires recycling

In 2013, because of an increase in blue box usage, 3,522 metric tonnes of waste was generated - the least amount ever

Acres of Natural and Maintained Parkland  
 711 acres  
 743 acres



**Deborah Furlan**  
*Coordinator,  
Strategic Planning  
Chief Administrative  
Office*



**Karen Loney**  
*Health Educator,  
Chatham-Kent Public  
Health Unit  
Coordinator CK  
Community Leaders'  
Cabinet*



**Ramsey D'Souza**  
*Epidemiologist  
CK Public Health*

# County of Lambton

Vision - Caring, Growing, Innovative

The County of Lambton has 126,199 residents and 3,002 sq. km of land

Where on earth is the County of Lambton?

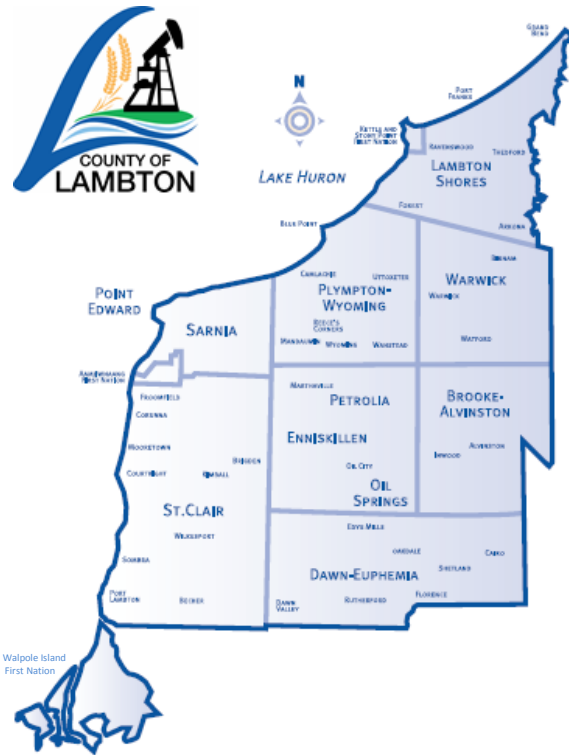


The largest city in Lambton is Sarnia, located at the mouth of the St. Clair River. The two Blue Water Bridges cross the river at Sarnia, connecting it to Port Huron, Michigan. The bridges are one of the busiest border crossings between the Canada and the USA.

Lambton County has 2,346 farms with 85% of the farmland reported as land in crops.

Lambton is famous for gorgeous sunsets and miles of uninterrupted sandy beaches.

[www.lambtononline.ca](http://www.lambtononline.ca)



Located in southwestern Ontario, Lambton County is bordered to the west by the St. Clair River, and to the north by Lake Huron. The municipalities of Huron County, Middlesex County and Chatham-Kent share our northern, eastern, and southern borders.

Lambton County is the site of North America's first drilled commercial oil well at Oil Springs in 1858.

## Fun Facts Stats!

- 116 Public Parks
- 600 Kilometres of Trails
- 22 Premium Golf Courses
- 400 Annual Festivals & Events
- 115 Kilometres of Waterfront



# THE WINDSOR-ESSEX COUNTY HEALTH UNIT

WORKING WITH WINDSOR-ESSEX COUNTY  
FOR A STRONG AND HEALTHY COMMUNITY

# WHO WE SERVE

## The Health Unit serves Windsor and Essex County:

- Southern-most county in Canada
- Seven municipalities, City of Windsor and Township of Pelee
- Population of almost 400,000 with Windsor and all municipalities in Essex County included

## Mission

- The Windsor-Essex County Health Unit works with the community to promote, protect, and improve health and well-being for all.

## Vision

- A strong and healthy community.

## Values

Professionalism   Leadership   Respect   Empowerment   Health Equity   Accountability





# WHAT WE DO...AND WHAT SETS US APART

The Windsor-Essex County Health Unit works in partnership with other agencies and health care providers to:

- Promote improved health
- Prevent disease and injury
- Control threats to human life and function
- Facilitate social conditions to ensure equal opportunity in attaining health for all

## Diversity:

- One of the most diverse communities in Canada, with over 70 different languages spoken and over 150 ethnic origins
- One in four people in Windsor-Essex are newcomers
- Large number of temporary migrant workers

## Our Mosaic

A Snapshot of Diversity in Windsor-Essex



Our Diversity



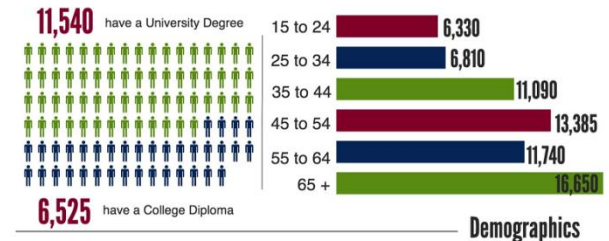
**1 in 4** people in Windsor-Essex are an immigrant

**27%** of the total population of the City of Windsor are newcomers.  
**15%** of the County of Essex are newcomers.

**21%** is the **TOTAL** newcomer population of all of **Windsor-Essex**.

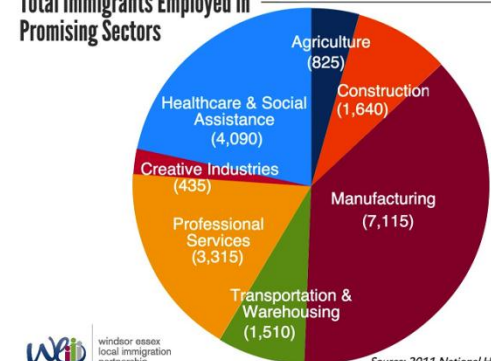
Between 2006 and 2011 **10,140** newcomers settled in Windsor-Essex

Education



Demographics

Total Immigrants Employed in Promising Sectors



Source: 2011 National Household Survey