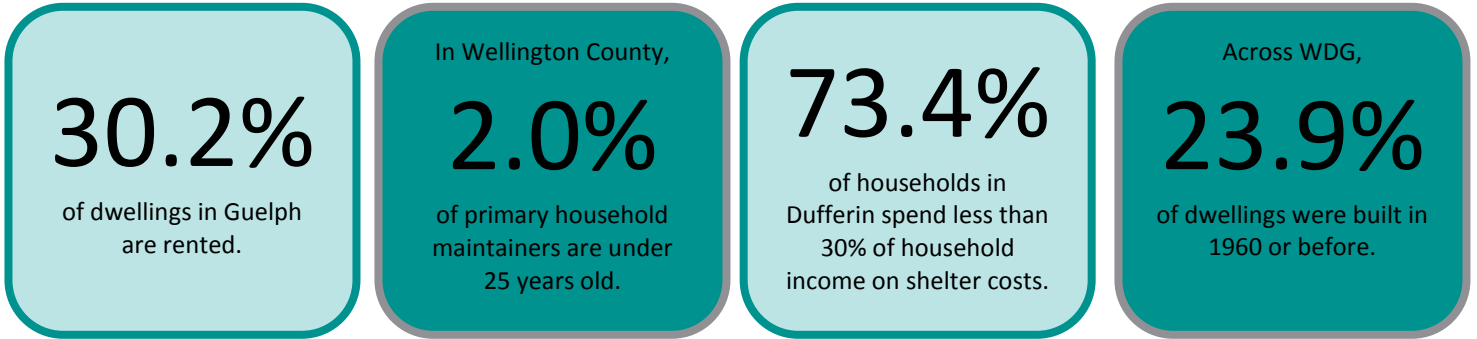


2011 NHS BULLETIN: Housing & Shelter

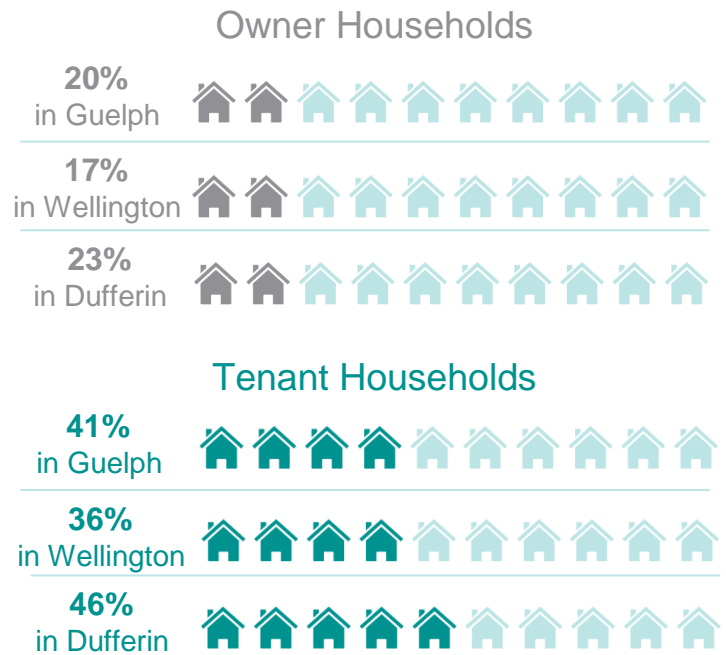
This report summarizes housing and shelter data collected during the 2011 National Household Survey for Wellington, Dufferin, and Guelph (WDG). In 2011, there were 99,145 occupied private dwellings in WDG; 76,915 (77.6%) of those dwellings were owned while 22,230 (22.4%) were rented. Overall, 7.2% of dwellings in WDG were constructed between 2006 and 2011.



Average Monthly Shelter Costs

	Owner Households	Tenant Households
Guelph	\$1278	\$888
Wellington	\$1278	\$823
Dufferin	\$1465	\$935

Percentage of Households Spending More Than 30% of Household Income on Shelter Costs



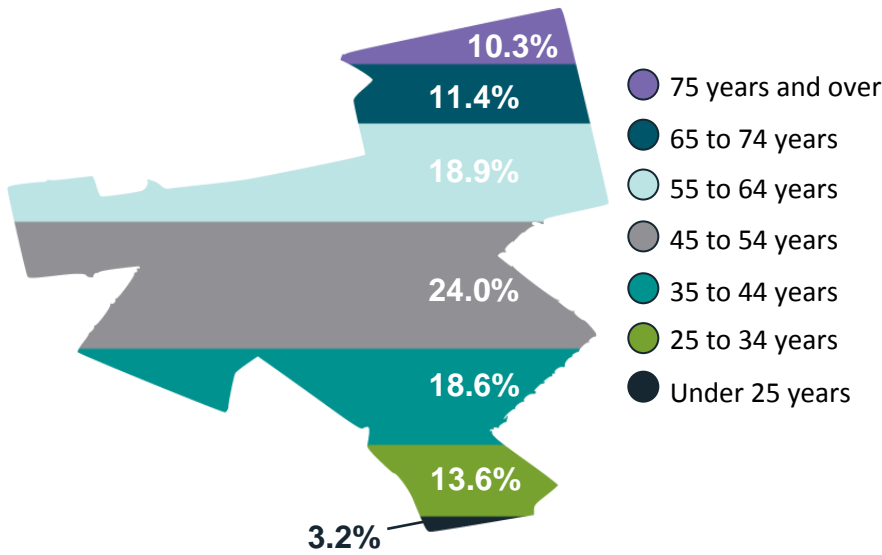
Did you know...

"Shelter costs" include monthly rent or mortgage payments, condo fees, and property taxes as well as the costs of electricity, heat, municipal services, etc.

Did you know...

If a household spends more than 30% of their income on shelter costs, they are considered to be experiencing affordability issues.

Age Group of Primary Household Maintainers in WDG



Average Value of Dwellings



Percentage of Private Households in WDG by Suitability and Condition of Dwelling



5.5%
Require Major Repairs



4.8%
Not Suitable

Did you know...

Housing suitability refers to whether a dwelling has enough bedrooms based on the age, sex, and relationships of the household members.

Percentage of Private Dwellings by Period of Construction

